

FOR LEASE

Owned and Operated by



STRIKER INDUSTRIAL PARK

732 | 814 | 834 Striker Ave. Sacramento, CA

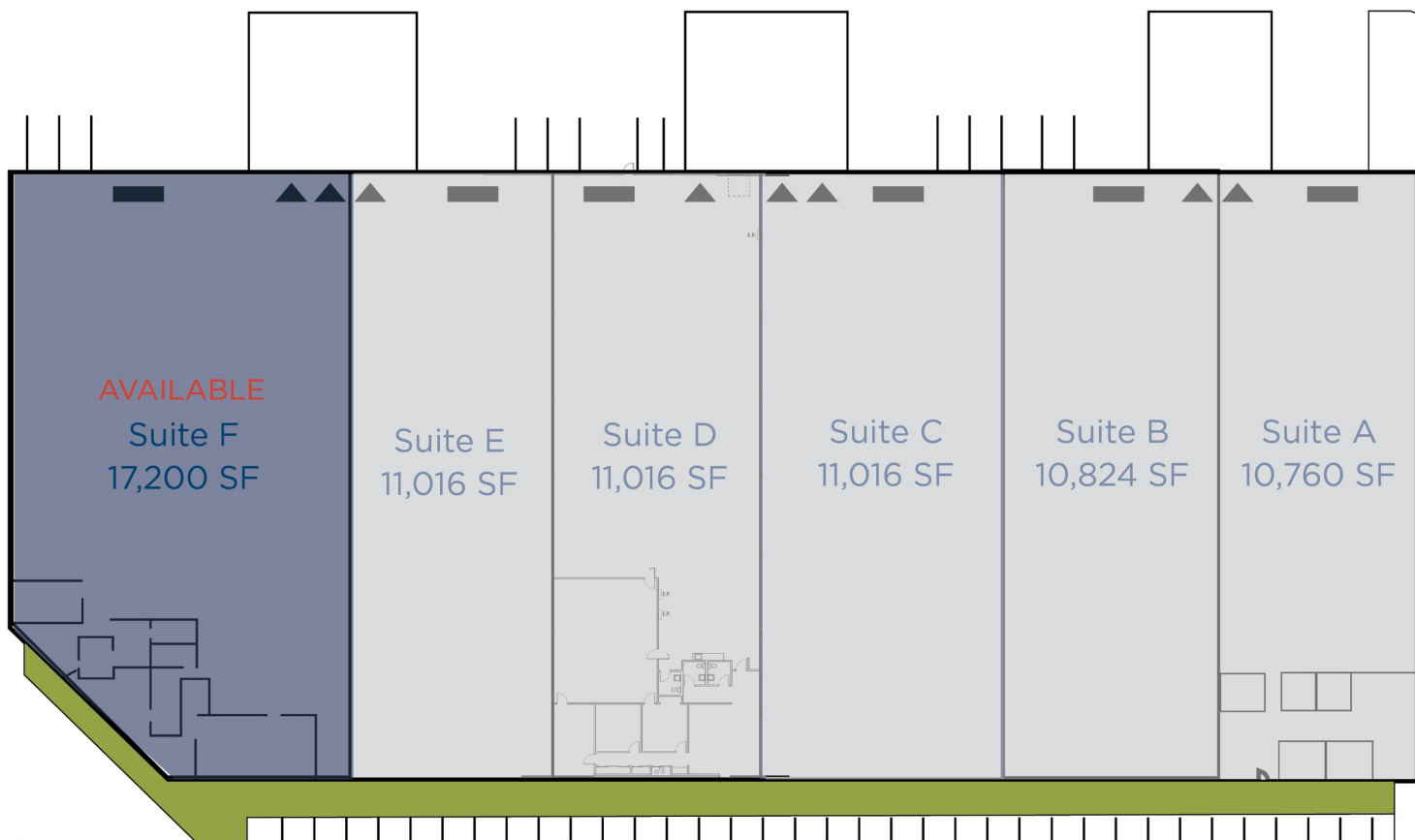
±11,900 - ±17,200 SF AVAILABLE



LEASING INFO & CONTACT

David Nicholson CA Lic# 01845338 (916) 288-4422 / david.nicholson@cushwake.com
Matt Cologna CA Lic# 01210309 (916) 288-4805 / matt.cologna@cushwake.com
Bryce MacDonald CA Lic# 01422174 (916) 28804806 / bryce.macdonald@cushwake.com





PROPERTY HIGHLIGHTS

Total Park Size ±167,202 SF

Space Available ±17,200 SF

Year Built 1984

Clear Height 23' - 24'

Zoning M1 - Light Industrial

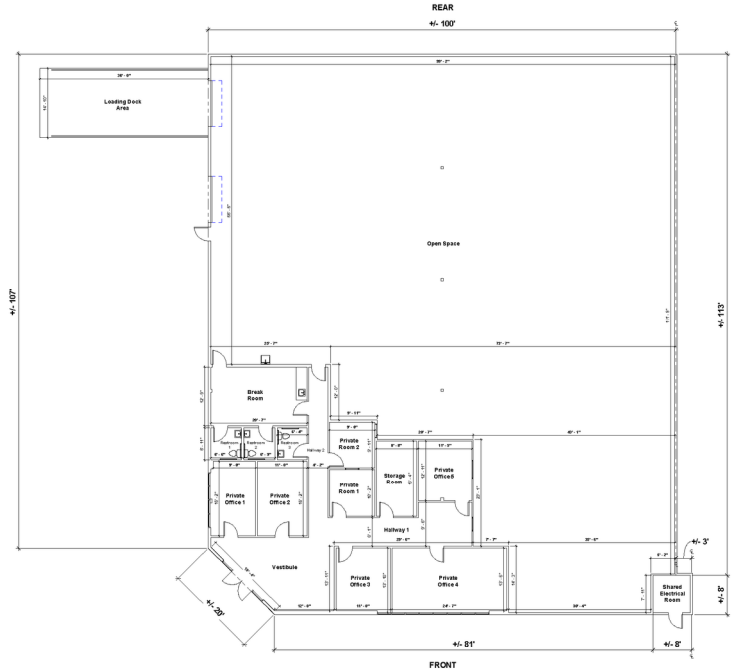
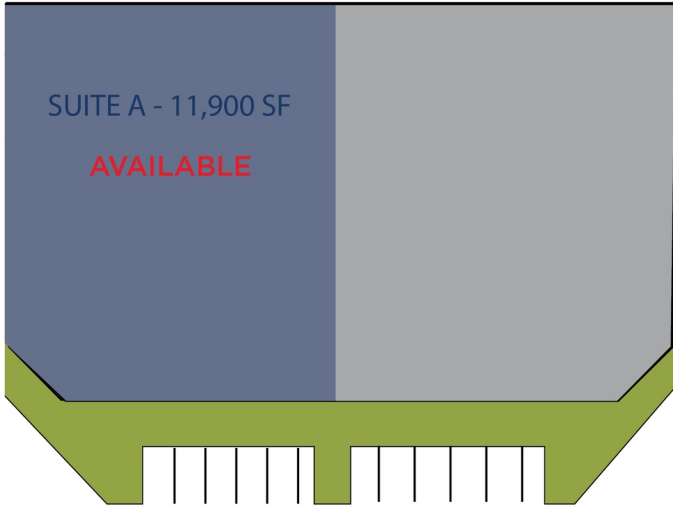
Sprinkler .292/2,000

834 STRIKER SUITE F

Available SF ±17,200 SF

Office Area ±3,500 SF

Loading 2 Dock Door / 1 Grade Level



PROPERTY HIGHLIGHTS

Total Park Size ±167,202 SF

Space Available ±11,900 SF

Year Built 1984

Clear Height 23' - 24'

Zoning M1 - Light Industrial

Sprinkler .292/2,000

814 STRIKER SUITE A

Available SF ±11,900 SF

Warehouse ±9,400 SF

Loading 1 Dock Door / 1 Grade Level

