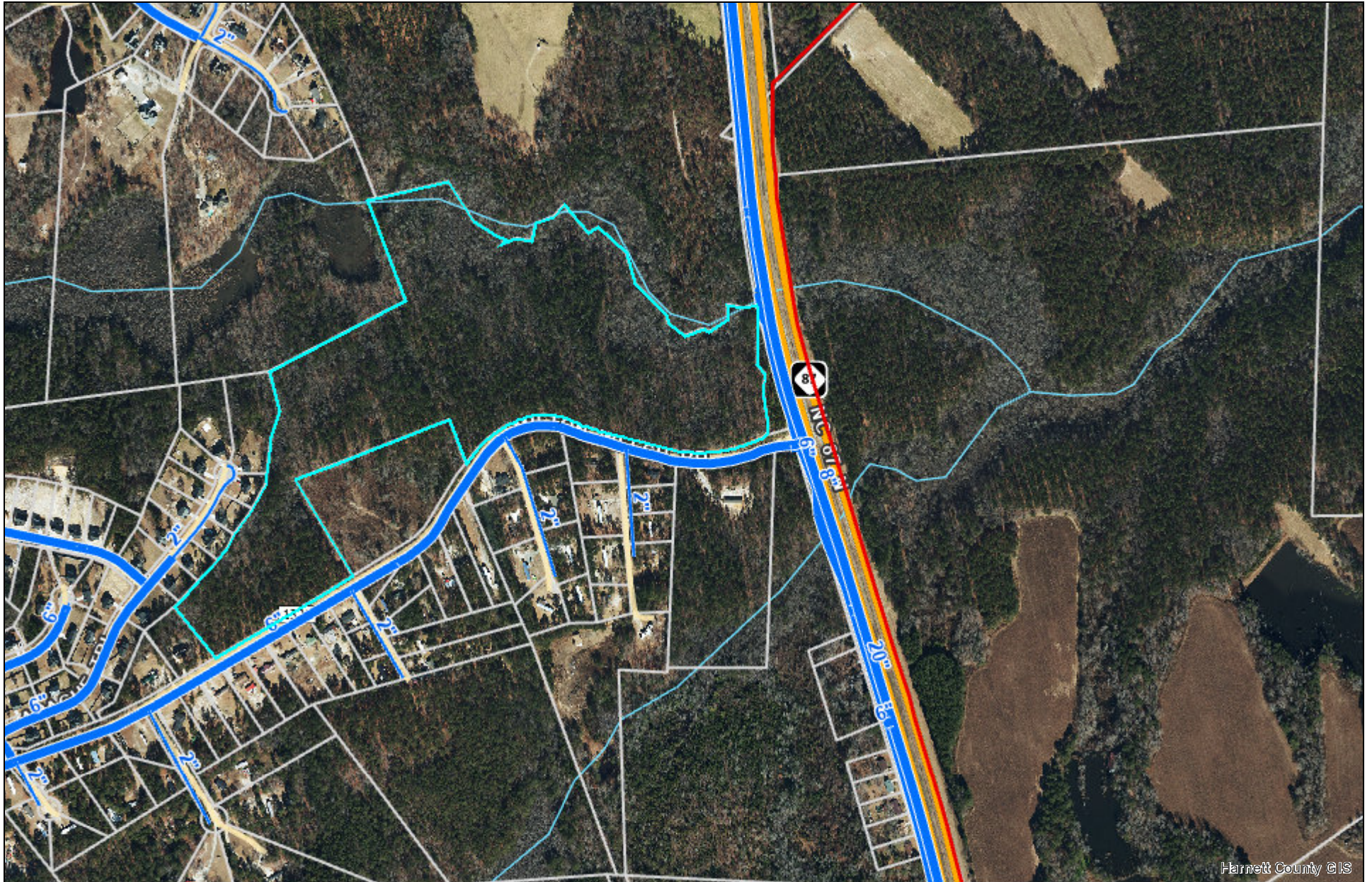


Harnett GIS

NOT FOR LEGAL USE

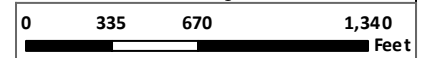
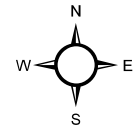


Harnett County GIS

GIS/E-911 Addressing

April 5, 2023

- | | | | |
|-------------------------------|------------------|---------------------------|--------|
| Surrounding County Boundaries | StepFM | County Water Mains | 6 - 20 |
| City Limits | Sewer Main | 2 - 5 | |
| County Boundary | Force Main | 6 - 36 | |
| Force Main | Lillington Sewer | Angier Water Mains | |
| Service Laterals | | 2 - 5 | |



1 inch = 752 feet