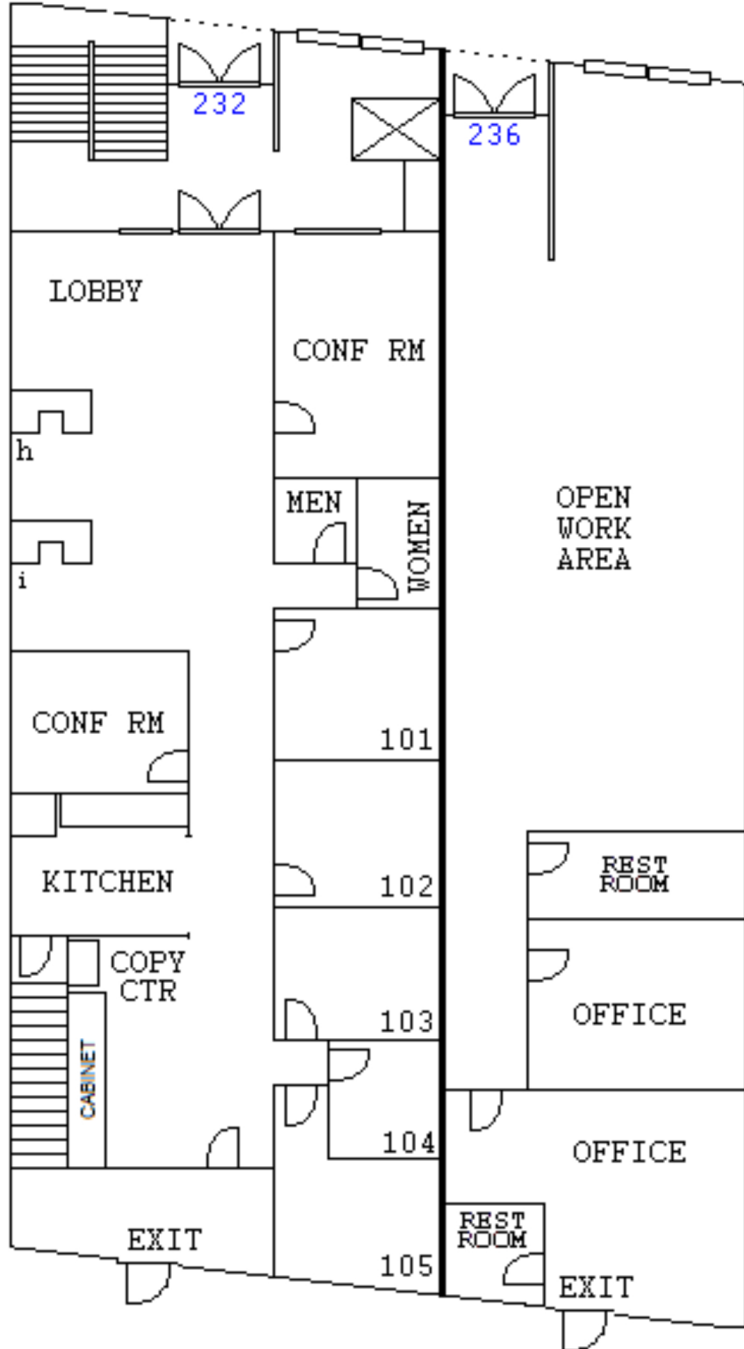


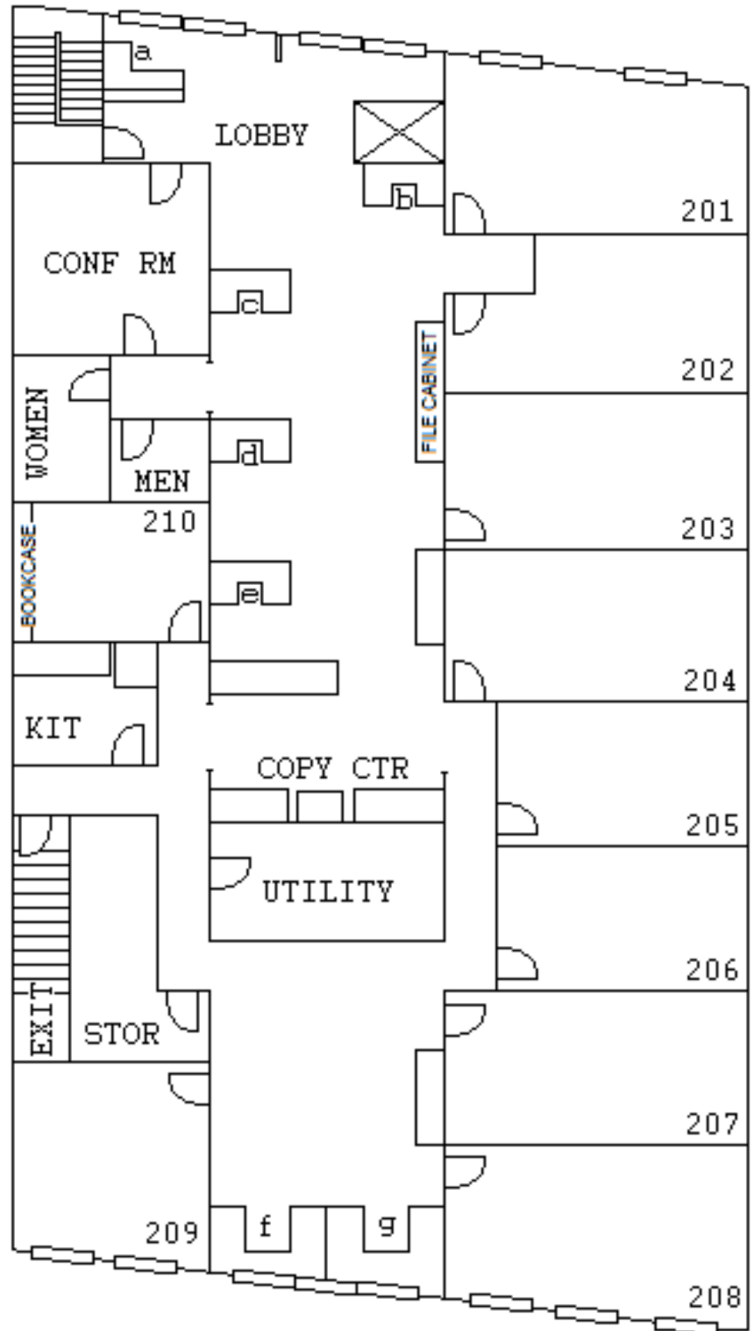


232 CAPITOL ST CHARLESTON WV 25301 ■ 304-343-8928 ■ info@capitolcenteroffices.com

FIRST FLOOR



SECOND FLOOR



ADA NOTICE: 232-236 Capitol St entrances are ground level with no stairs and feature double doors which both open. ADA-compliant restrooms are located on each floor. The second floor is serviced by stairs and elevator.