

1,018 SF
OFFICE OR MEDICAL
NOW AVAILABLE
FOR LEASE

CAPISTRANO PROFESSIONAL PLAZA

30240 Rancho Viejo Rd. Suite C
San Juan Capistrano, CA



PROPERTY HIGHLIGHTS:

- Fully built-out office
- Freeway visibility
- Competitive lease rate
- Convenient South OC location
- Professional setting
- Office and medical uses permitted
- Efficient floor plan
- Easy access to 5, 73, and 74 Hwy
- 4:1 Parking ratio
- Meticulously cared for professional plaza
- Beautiful landscaping and fountains
- Several amenities nearby
- Close to Amtrak rail station
- www.capistranoprofessionalplaza.com

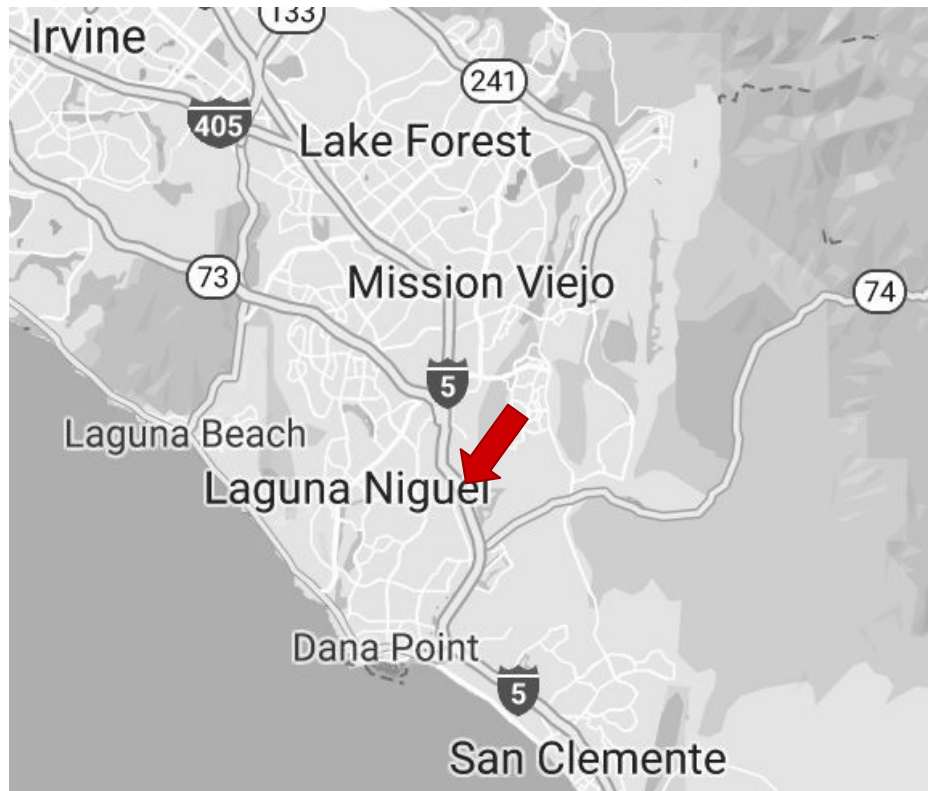
Leasing Contact:

Justin Hugron, CCIM

949.216.0469

justin@ashwillassociates.com

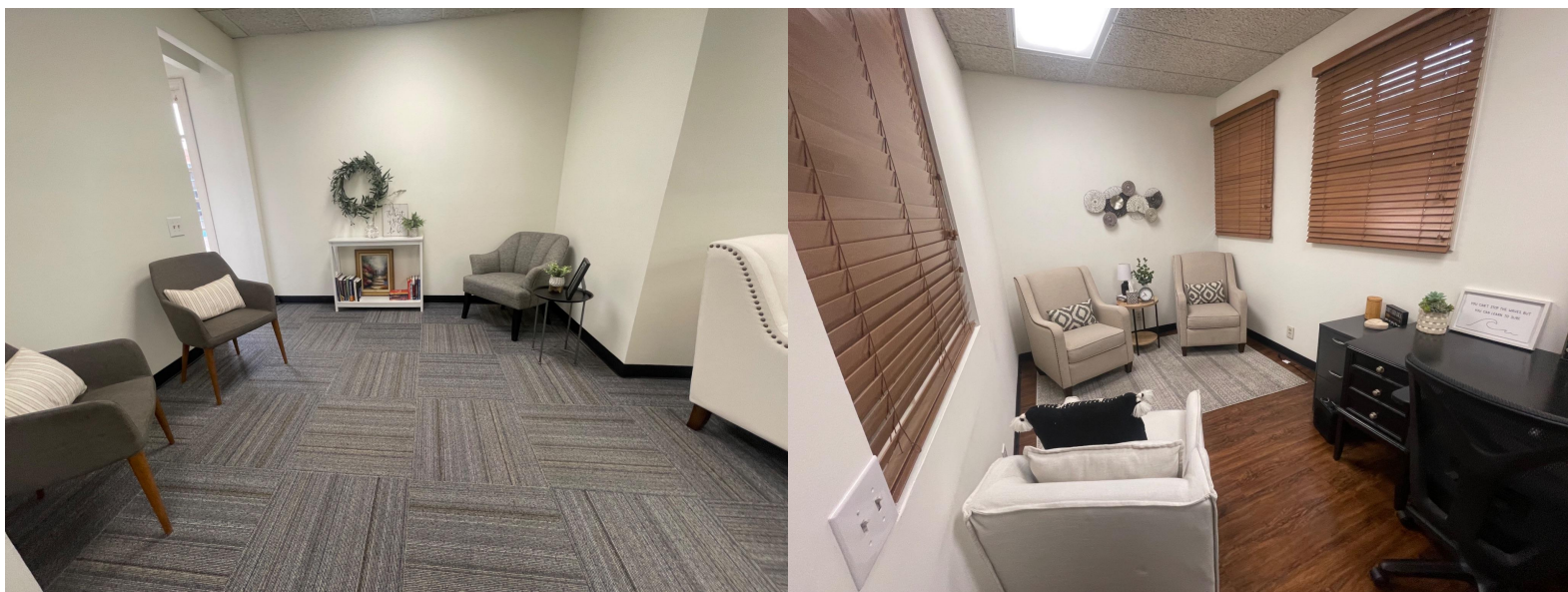
DRE# 02069980 Corp.DRE# 01291393



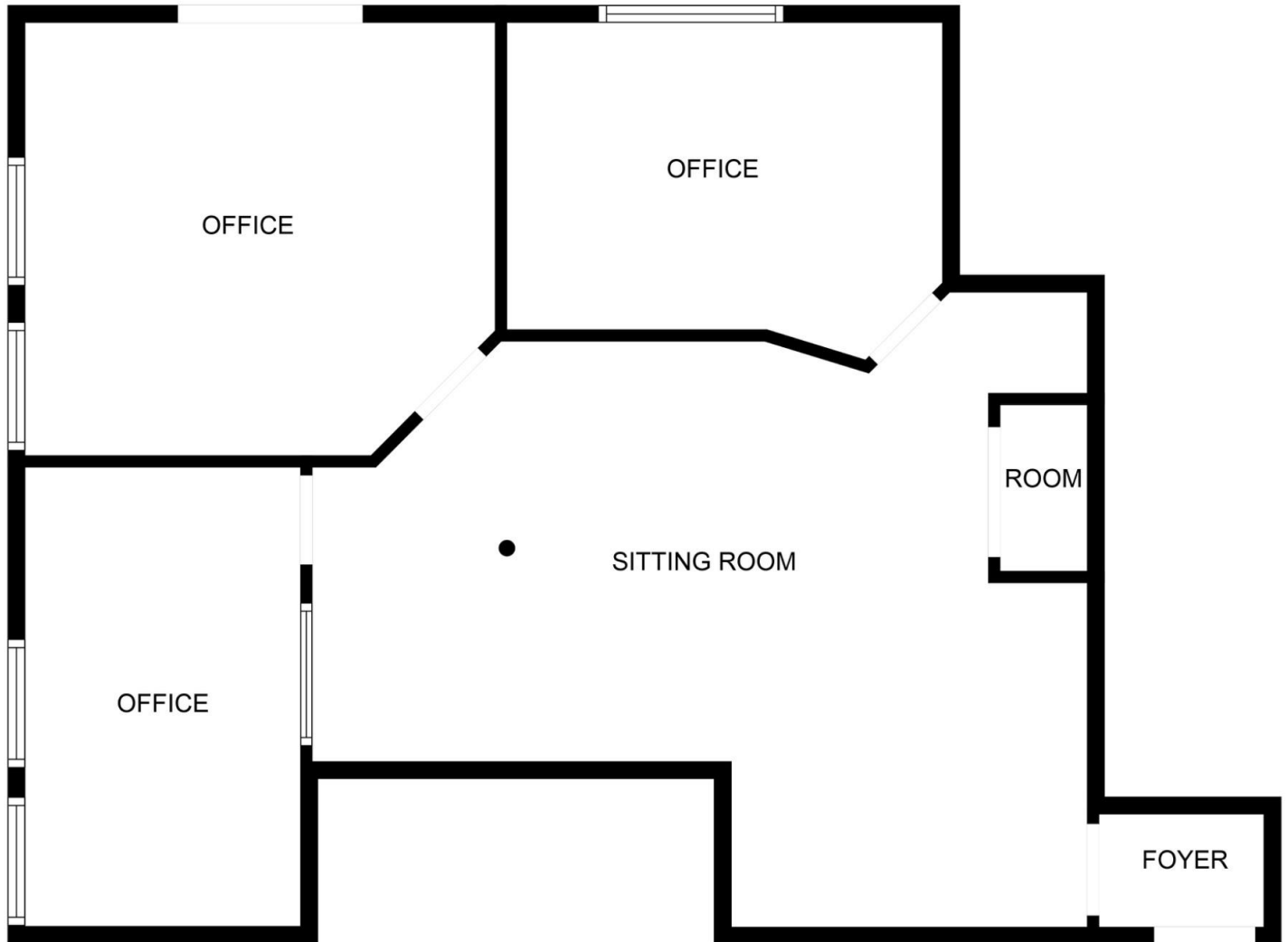
SOUTH COUNTY OFFICE

**Ashwill
Associates**
COMMERCIAL REAL ESTATE

INTERIOR PHOTOS



FLOOR PLAN & SUITE NOTES



SUITE HIGHLIGHTS

30240 Rancho Viejo Rd. Suite C

- 1,018 SF ground-floor suite
 - Reception/lobby
 - 3 Private window offices
 - Kitchenette
 - Multiple Entrances/Exits
- Ample Parking

Monthly Rent Breakdown:

1,018 SF @ \$2.25 PSF NNN (\$2,290.50/month)
+ \$0.56 PSF NNN (\$570.08)
= \$2,860.58/month



Ashwill
Associates
COMMERCIAL REAL ESTATE

PHOTOS



FOR MORE INFO
OR TO TOUR:

Justin Hugron, CCIM

949.216.0469

justin@ashwillassociates.com

DRE# 02069980 Corp.DRE# 01291393



**Ashwill
Associates**
COMMERCIAL REAL ESTATE