



TURN-KEY MODERN OFFICE

1565 Jefferson Rd, Rochester, 14623



ADAM BORRELL

Senior Leasing Executive

(585) 615-3593

aborrell@buckprop.com

SQUARE FOOTAGE

33,482 SF

ABOUT THE SPACE

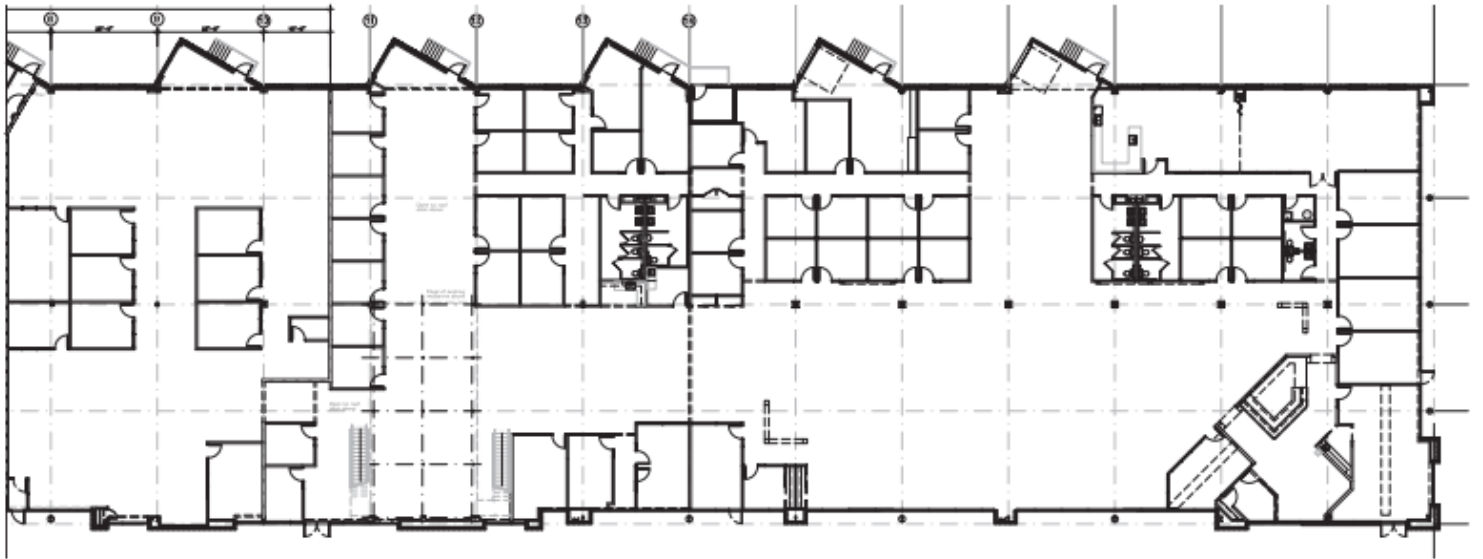
This modern office space features an open floor plan with perimeter offices, multiple conference rooms, a large meeting area, and exposed ceiling and ductwork. As an end cap space, this office features extra windows with plenty of natural light. The space has one dock, with the ability to install five more.



BUCKINGHAM PROPERTIES

TURN-KEY MODERN OFFICE

1565 Jefferson Rd, Rochester, 14623



SUITE 200
33,482 SF



BUCKINGHAM PROPERTIES

(585) 295-9500 | www.buckprop.com | 259 Alexander Street, Rochester, NY