

FOR LEASE Office / Retail

925 E. Maple Rd., Birmingham, MI 48009

GEORGE

COMMERCIAL REAL ESTATE SERVICES
A DIVISION OF GEORGE REALTY, LLC



SIZE	3,803 SF/FT
TERM	3+ Years
RENTAL RATE	\$32.00 /SF/YR
SPACE USE	Office/Retail
CONDITION	Completely Renovated
AVAILABLE	August 1, 2025

Space is completely renovated - current tenant is being relocated. 3,803 Square feet could easily be split in two halves of 1,610 and 2,193 sq ft. Located on best possible area for this type of building, walking distance to Birmingham and surrounding desirable areas.

- Lease price \$32 sq. ft. per year, modified gross.
- Lease rate does not include utilities.
- 3,803 sq. ft. which two floors of dedicated office space.
- Completely remodeled, ready for move in.

OFFICE/RETAIL FACILITY FACTS

Building Size 8,000 SF/FT
Construction Masonry
Central Heating/Air
Zoning - Retail, Office

FEATURES

Clear Height: 9'
Great signage capabilities
Standard Parking Spaces: 15-20
Walking distance to Downtown Birmingham

MORE INFORMATION

Michael George II | Phone 248.763.5400 | Email mg@georgeco.com

George Realty, LLC | 915 E Maple, Birmingham, MI 48009

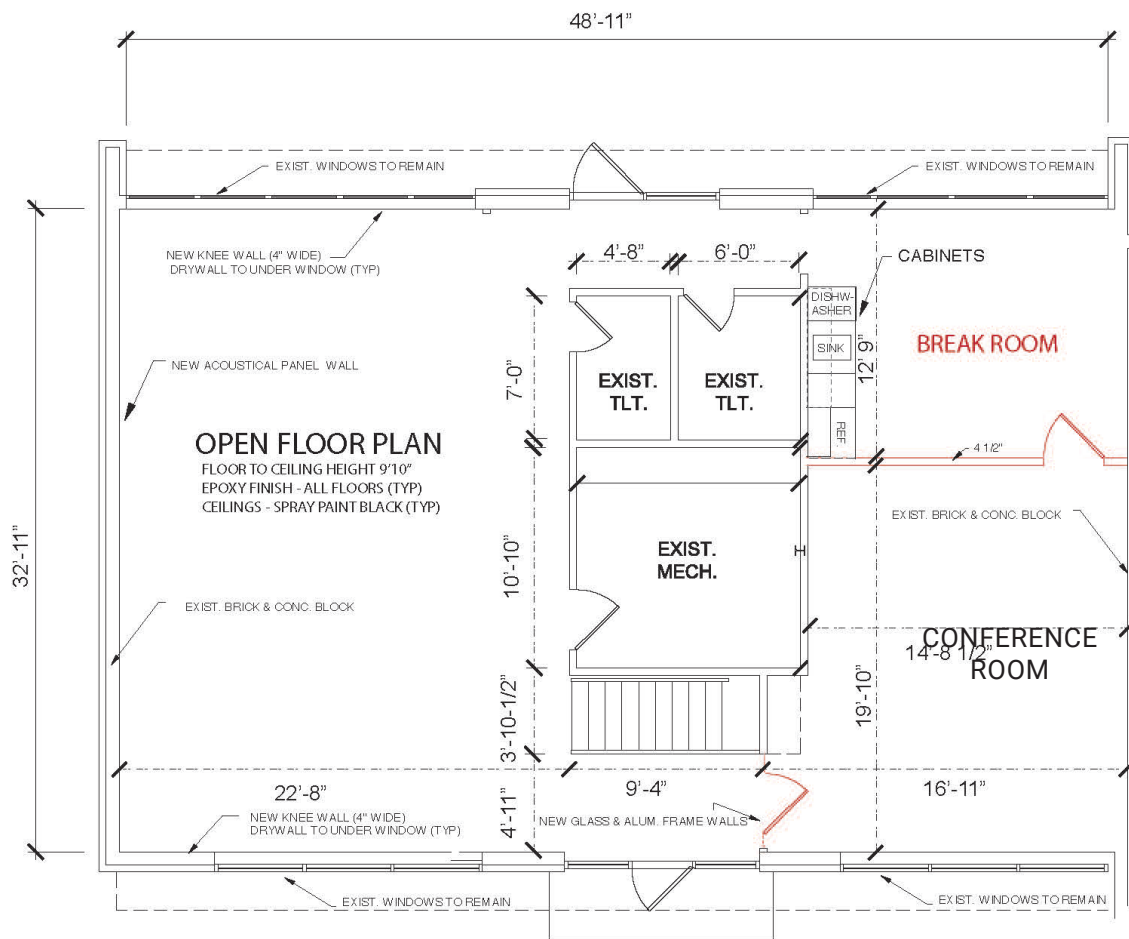
FOR LEASE Office / Retail

925 E. Maple Rd., Birmingham, MI 48009

GEORGE
COMMERCIAL REAL ESTATE SERVICES
A DIVISION OF GEORGE REALTY, LLC



LOWER LEVEL | 1,610 SQ/FT



UPPER LEVEL | 2,193 SQ/FT

