

Fremont Office Space for Lease

108 NW Canal Street, Seattle, WA 98107



Office space for lease in the heart of Fremont! Approximately 1,211 SF of office space on the 2nd floor. The 2nd floor office space features floor-to-ceiling windows, private restroom with shower, coffee bar and a large open work area. Exceptional location on the Burke Gilman Trail and just a stones throw from numerous restaurants, shops and all of the amenities Fremont has to offer.

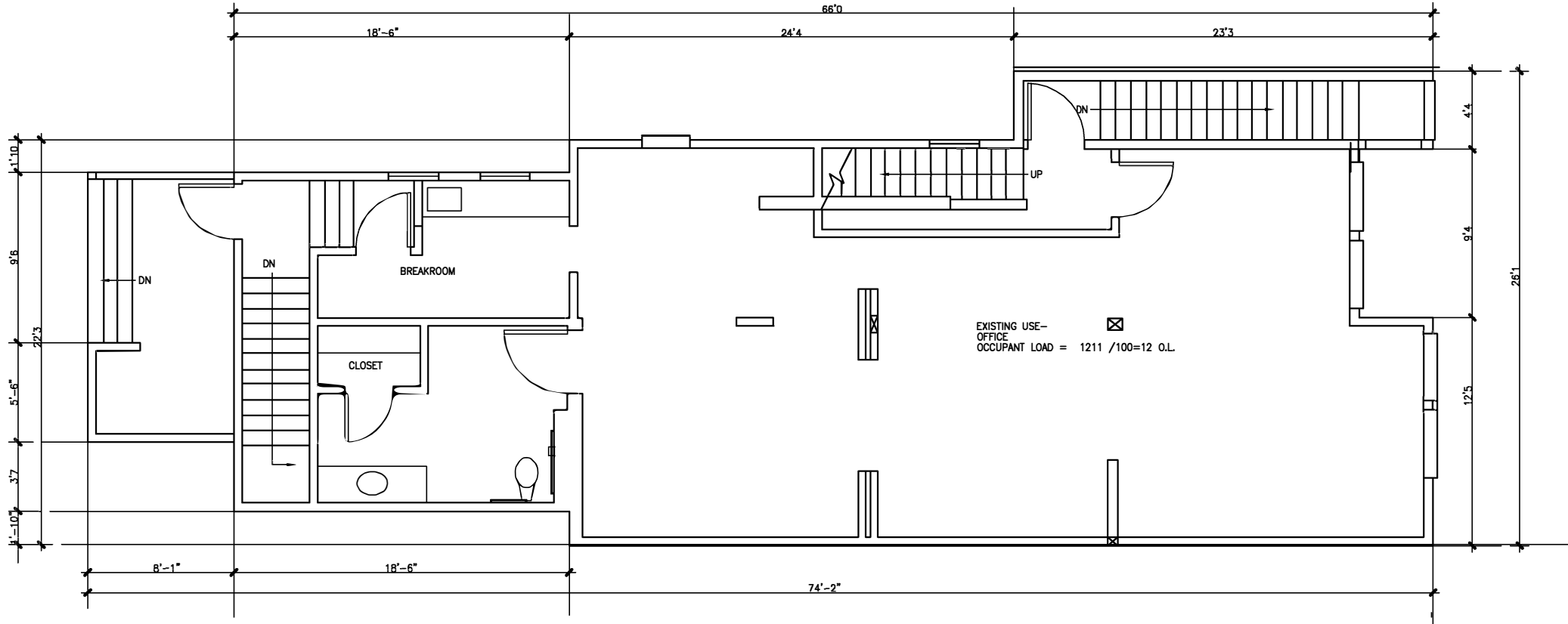


Asset Class:	Office
Base Rent:	\$23.83/SF/YR (\$5,000/M)
2019 Est. NNN:	\$6.10/SF/YR (\$1,280/M) NNN includes ALL utilities
Total SF Available:	1,211 SF
Parking	1 Off-street space per 1,000 SF

Property Features:

- ◆ Grade-level loading door
- ◆ Private restroom with shower on 2 floor
- ◆ Coffee bar/kitchenette
- ◆ Floor-to-Ceiling windows overlooking the Burke Gilman Trail & Fremont Ship Canal
- ◆ Great branding and signage opportunities
- ◆ Close to restaurants, retail shops and one block from Mass Transit

For additional information please call:
Lauren Hendricks 206-999-9161
LaurenHendricks@windermere.com
Windermere RE/Wall Street, Inc.



OFFICE FLOOR PLAN

SCALE 1/4" = 1'0"