

11.36 ACRES

LAND FOR LEASE DIVISIBLE TO 6,000 SF

80 Passaic Ave

Florham Park, NJ



Fully entitled for:

- Contractor yard storage
- Trailer storage
- Truck parking
- Material storage
- Landscaper yard

NAI James E. Hanson
COMMERCIAL REAL ESTATE SERVICES. WORLDWIDE

CAPITAL
MARKETS
& LEASING

Christopher D. Todd, SIOR
Senior Managing Director
Capital Markets & Leasing
201 488 5800 x117
ctodd@naihanson.com

Jordan W. Avanzato, SIOR
Senior Managing Director
Capital Markets & Leasing
201 488 5800 x132
javanzato@naihanson.com

William Ericksen, SIOR, CCIM
Managing Director
Capital Markets & Leasing
201 488 5800 x133
wericksen@naihanson.com

Christopher D'Andrea
Associate
Corporate Services Group
973 463 1011 x296
cdandrea@naihanson.com

Russell "Pepe" Smith
Associate
Capital Markets & Leasing
973 463 1011 x283
rsmith@naihanson.com

SITE PLAN OVERLAY

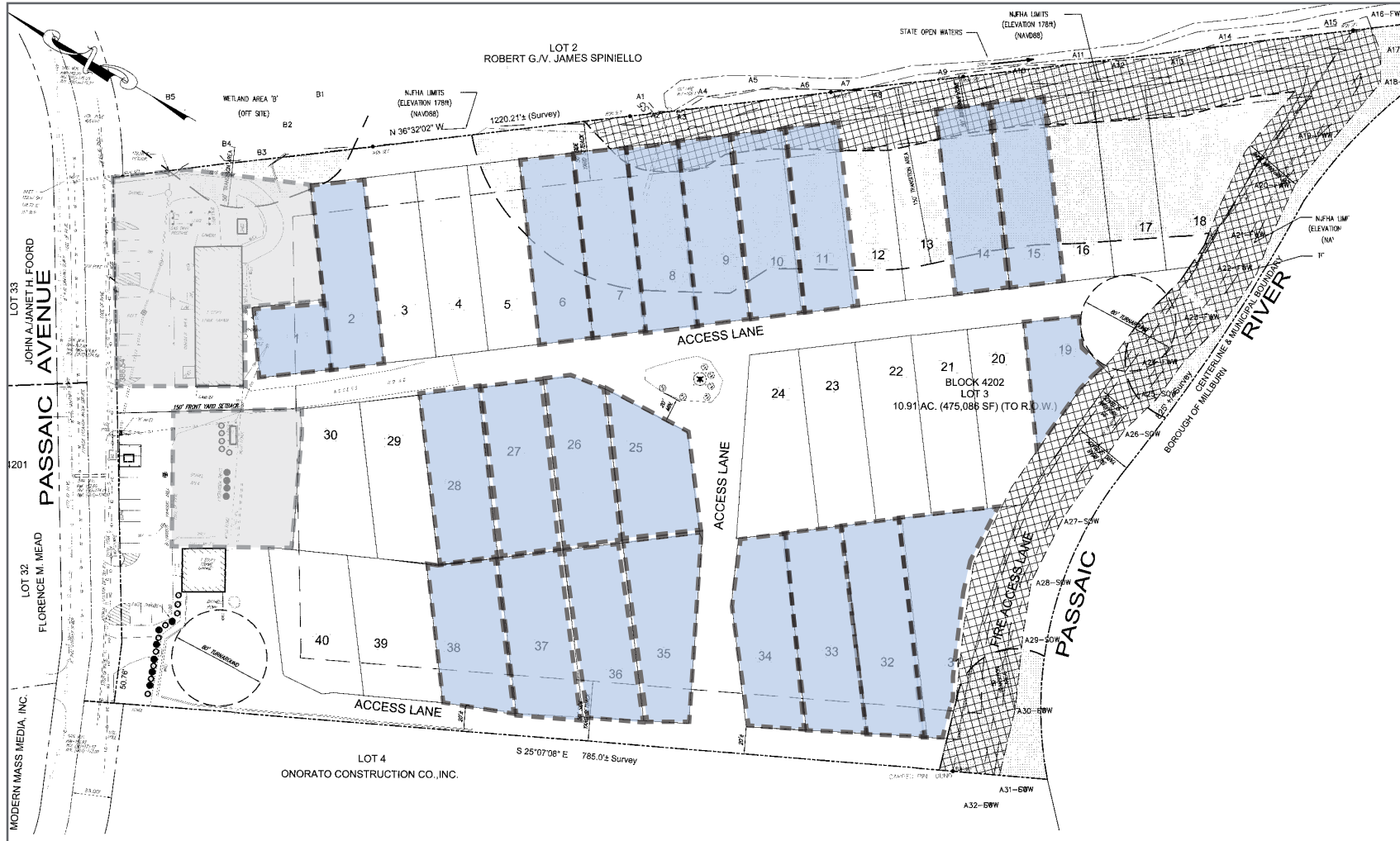
80
Passaic Ave
Florham Park, NJ



*NOT TO SCALE

SITE PLAN

80
Passaic Ave
Florham Park, NJ



Parcel #	SQ.FT.
1	3,519 (Leased)
2	6,819 (Leased)
3	6,820
4	6,826
5	6,821
6	6,813 (Leased)
7	6,813 (Leased)
8	6,827 (Leased)
9	6,827 (Leased)
10	6,827 (Leased)
11	6,813 (Leased)
12	6,811
13	6,827
14	6,827 (Leased)
15	6,828 (Leased)
16	6,827
17	6,841
18	13,218
19	5,850 (Leased)
20	6,923
21	7,094
22	7,094
23	7,194
24	8,322
25	7,313 (Leased)
26	6,922 (Leased)
27	7,825 (Leased)
28	7,092 (Leased)
29	6,817
30	7,315
31	11,050 (Leased)
32	8,935 (Leased)
33	8,489 (Leased)
34	7,739 (Leased)
35	8,013 (Leased)
36	7,228 (Leased)
37	7,433 (Leased)
38	7,346 (Leased)
39	7,628
40	7,548

PROPERTY PHOTOS

80
Passaic Ave
Florham Park, NJ



HIGHWAY AERIAL

80
Passaic Ave
Florham Park, NJ

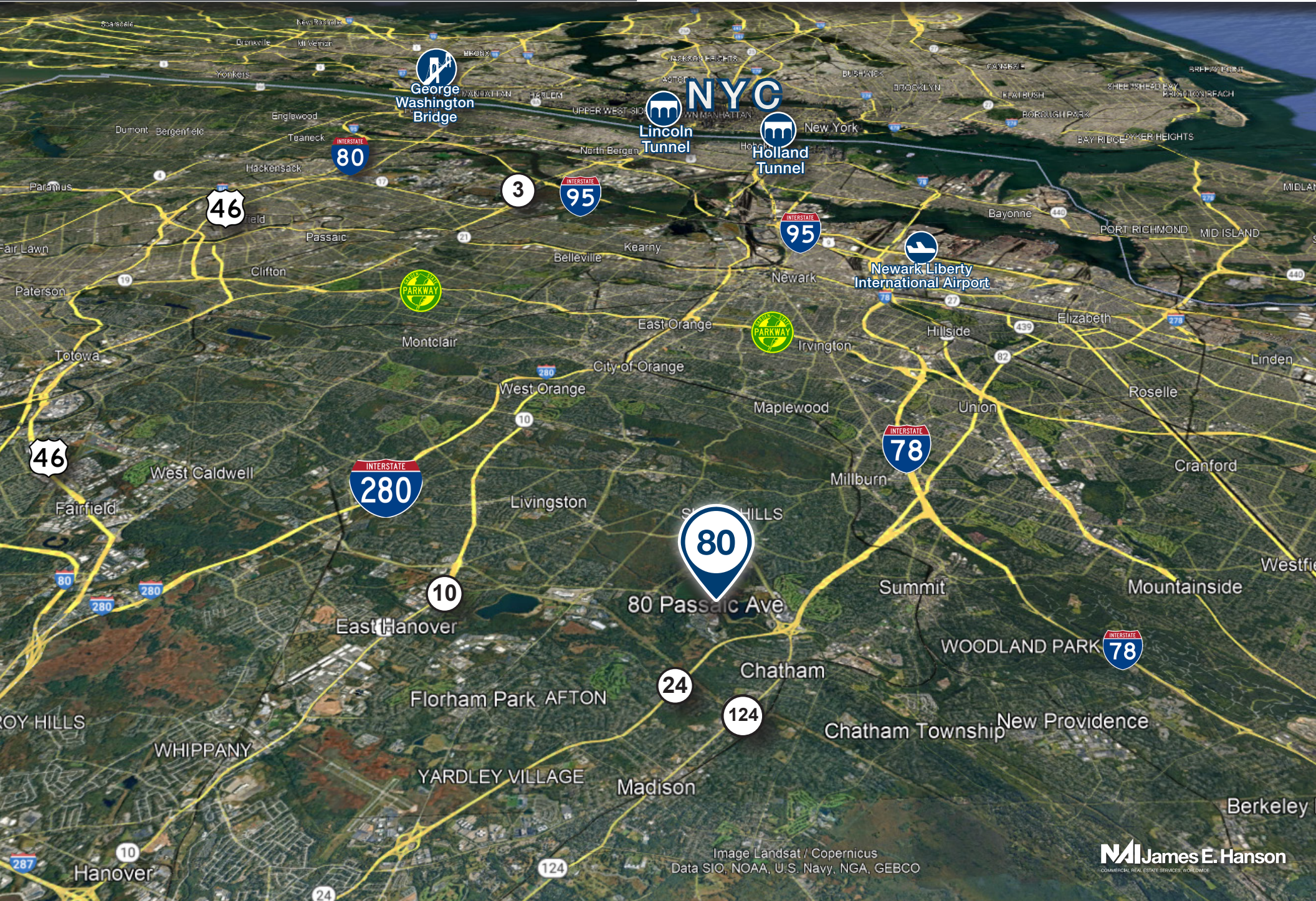


Image Landsat / Copernicus
Data SIO, NOAA, U.S. Navy, NGA, GEBCO

James E. Hanson
COMMERCIAL REAL ESTATE SERVICES, WORLDWIDE