

155 CHAMBERS STREET

North Side between West Broadway and Greenwich Street

TRIBECA QUICK SERVICE RESTAURANT FOR LEASE GREENWICH STREET-ADJACENT



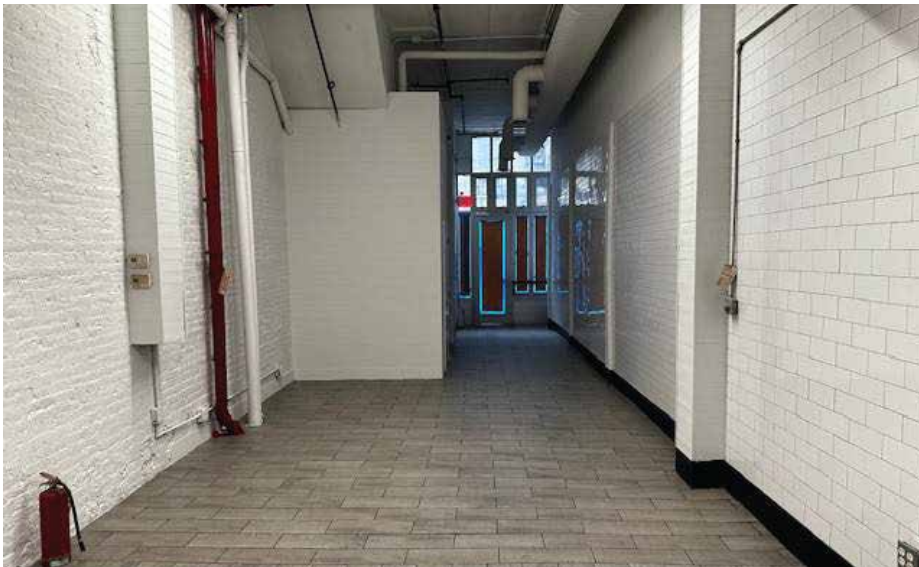
155 CHAMBERS STREET

North Side between West Broadway and Greenwich Street

VENTED RESTAURANT SPACE FOR LEASE HIGH TRAFFIC | STEPS TO SUBWAY

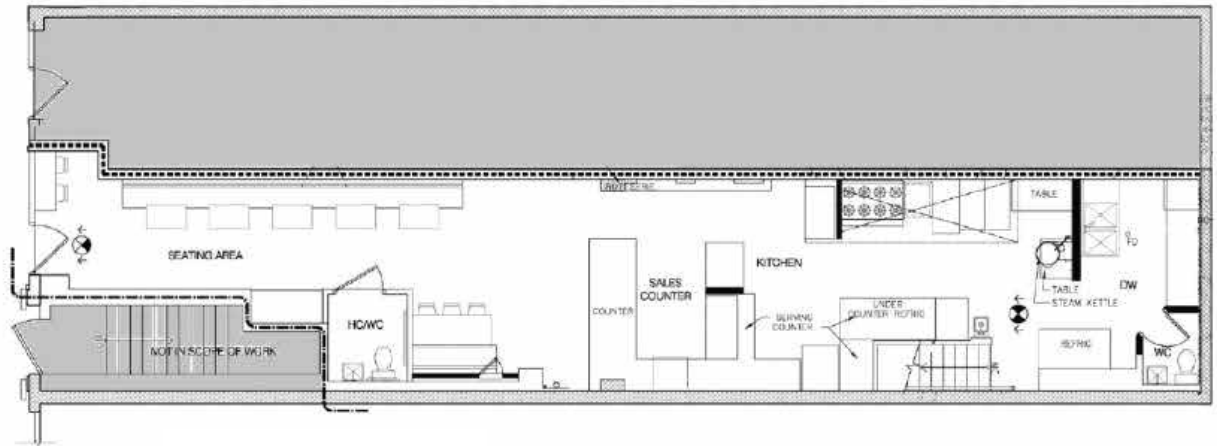
Ground	:	900 SF
Basement	:	800 SF
Ceiling Heights	:	15-Feet Ground
Term	:	Negotiable
Possession	:	Immediate

- » Vented Commercial Kitchen
- » Natural Gas / HVAC
- » Kitchen Equipment in Place
- » Prime Tribeca Location

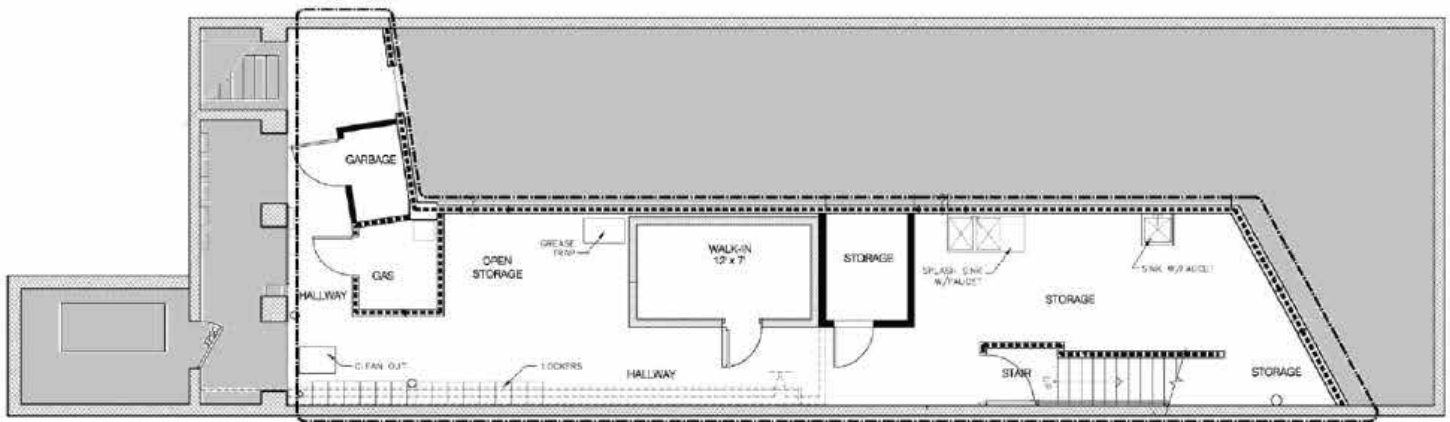


155 CHAMBERS STREET

North Side between West Broadway and Greenwich Street



Ground Floor



Cellar Floor

155 CHAMBERS STREET

North Side between West Broadway and Greenwich Street

Please Contact:
PETER WEISMAN
 212.300.3077
 peter@weismannyc.com

GREENWICH STREET | **WEST BROADWAY** | **CHURCH STREET** | **BROADWAY**

THOMAS STREET

DUANE STREET

READE STREET

CHAMBERS STREET

WARREN STREET

MURRAY STREET

TRIMBLE PLACE

155 CHAMBERS STREET