



RESTAURANT
OPPORTUNITY

401 HAIGHT STREET

LOWER HAIGHT | SAN FRANCISCO, CA

maven
RETAIL



- **+/- 1,341 SF**
- **Additional basement space**
- **Type 1 hood**
- **Prime corner location**
- **Abundant natural light**
- **Open layout**
- **Excellent signage opportunity**
- **Nearby businesses include Café Reveille, Jules Pizza, Stoa, Bar Jabroni, Out There Coffee, ACME Floral, and many more**

FEATURES

Located in the heart of the vibrant Lower Haight, 401 Haight Street presents a rare opportunity to lease a prime corner restaurant space in one of San Francisco's most exciting and evolving neighborhoods. Surrounded by a strong mix of popular local operators including Café Réveille, Jules Pizza, Stoa, Bar Jabroni, Out There Coffee, and ACME Floral, the area continues to attract new and dynamic concepts, creating a true destination for food and retail. The ±1,341 SF corner space features abundant natural light, an open and flexible layout, a Type 1 hood, additional basement space for storage, and excellent signage exposure, making it ideal for a wide range of restaurant concepts looking to establish a presence in a high-energy corridor.



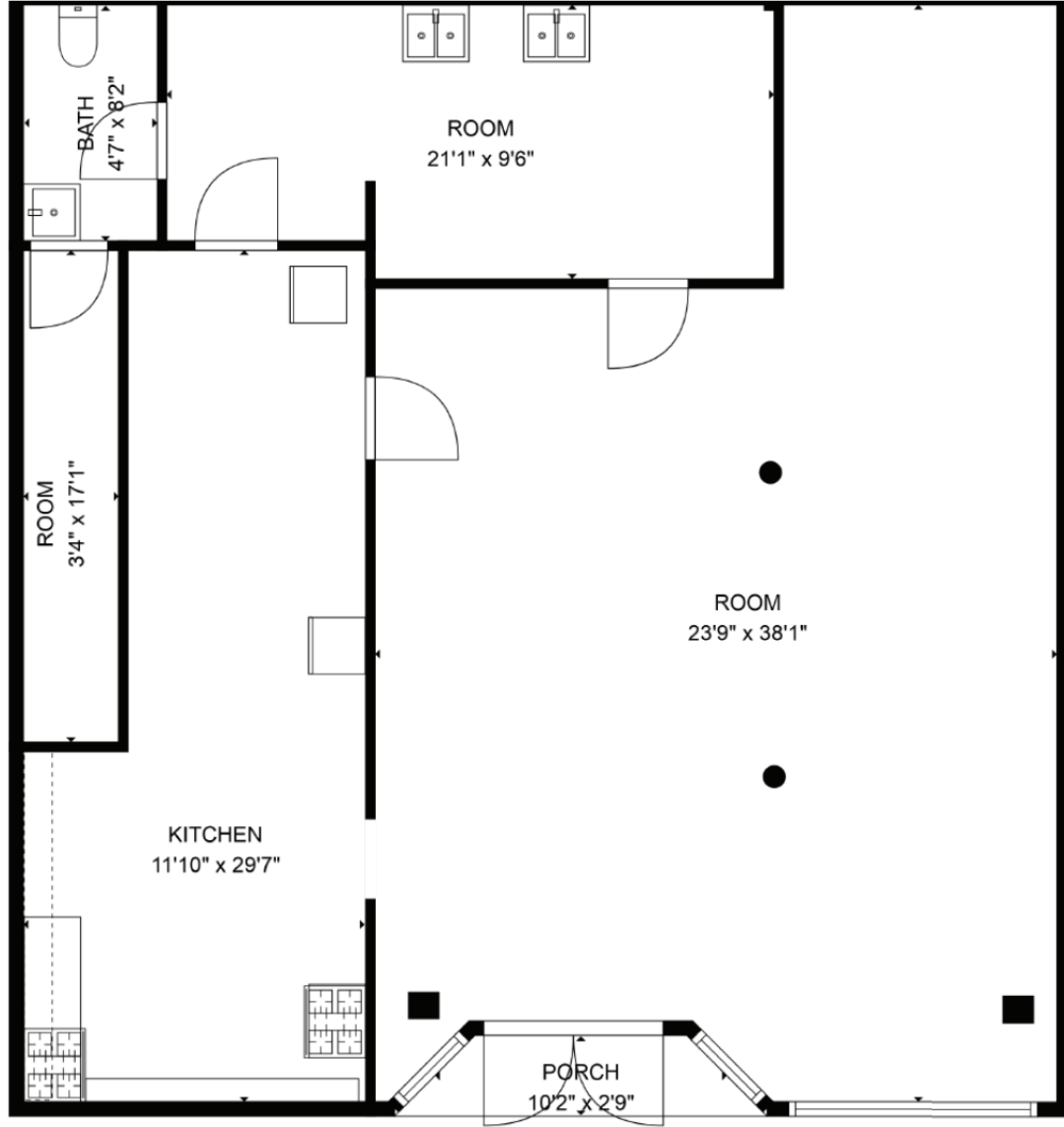
CURRENT CONDITION



CONCEPTUAL A.I. RENDERING



FLOOR PLAN





CAFÉ REVEILLE



HORSEFEATHER



SCHLOK'S BAGEL



OTRA



ACME FLORAL



KATE'S KITCHEN



SIGHTGLASS COFFEE



JULES PIZZA



BAR JABRONI

LOWER HAIGHT

401 Haight Street is located in the Lower Haight neighborhood.

The Lower Haight in San Francisco is a small, local neighborhood just to the east of the famous Haight-Ashbury District. It offers a dense urban feel, plus plenty of beautiful Victorian homes, colorful street art, and a quieter, more residential feel. Haight Street is the neighborhood's commercial center, full of a diverse assortment of shops, eateries, cafes, record stores, and more. The ultra-walkable Lower Haight sits near Market Street's Safeway and Whole Foods Market, as well as Hayes Valley and Divisadero Street's hot spots.



CONCEPTUAL A.I. RENDERING

Contact

JOAN RUYLE

Office 415.404.7313

joan@mavenproperties.com

DRE #02006025

NOTICE: This information has been secured from sources we believe to be reliable but we make no representations, warranties, express or implied, as to the accuracy of the information. Listing broker has been given enough information to provide only a preliminary interest in the property. The materials are not to be considered fact. The information contained herein is not a substitute for thorough due diligence investigation. References to square footage, zoning, use, or age are approximate. Please contact the San Francisco Planning Department to verify zoning at (415) 558-6378, as neither broker or landlord represent that this space is suitable for your use. Tenant or Buyer must verify the information at their own expense and bears all the risk for any inaccuracies. By receiving these materials you are agreeing to the disclaimers set forth herein. DRE#01878802

466 Green Street Suite #203

San Francisco, CA 94133

415-781-770

www.mavenproperties.com