

Wayne Plaza

Prime Location Retail Center in Wayne, MI



51863 Schoenherr Road
Suite 102, Shelby Township,
MI 48315

Phone: 586-228-2232

Email:

Larry@Hrgproperty.com

Jordan@Hrgproperty.com

General Information:

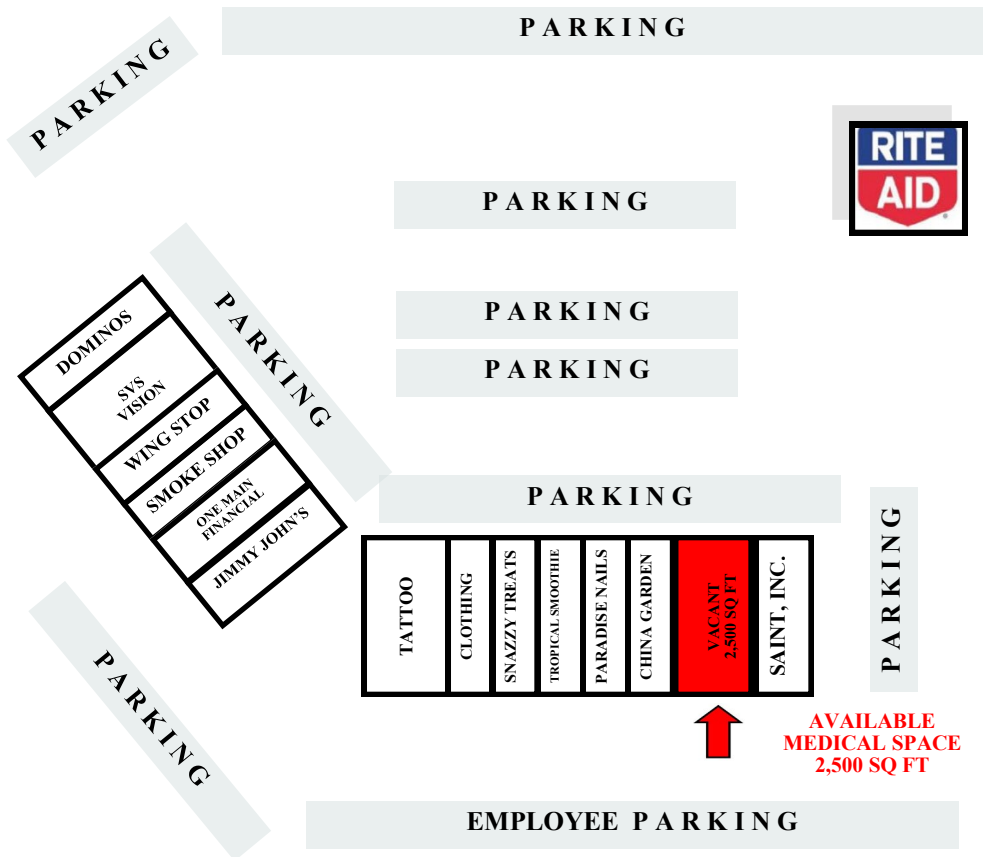
- SITE ADDRESS: 35115-35173 Michigan Ave. Wayne, MI
- Total Structure Size: 25,587 Square Feet
- Busy Shopping & Dining District
- Former medical space available
- Great Location / High Visibility
- Generous # of Parking Spaces
- HIGH Traffic Volumes
- Current Tenants: Jimmy John's, Domino's, T-Mobile, Wing Stop, SVS Vision, Tropical Smoothie & Others.

LEASE PLAN-OVERVIEW



51863 Schoenherr Road
Suite 102, Shelby Township,
MI 48315

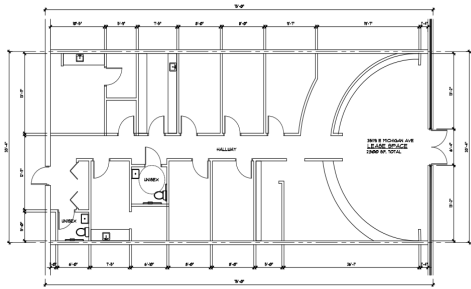
Phone: 586-228-2232
Email: Larry@Hrgproperty.com
Jordan@Hrgproperty.com



BUSINESSES IN & AROUND WAYNE PLAZA



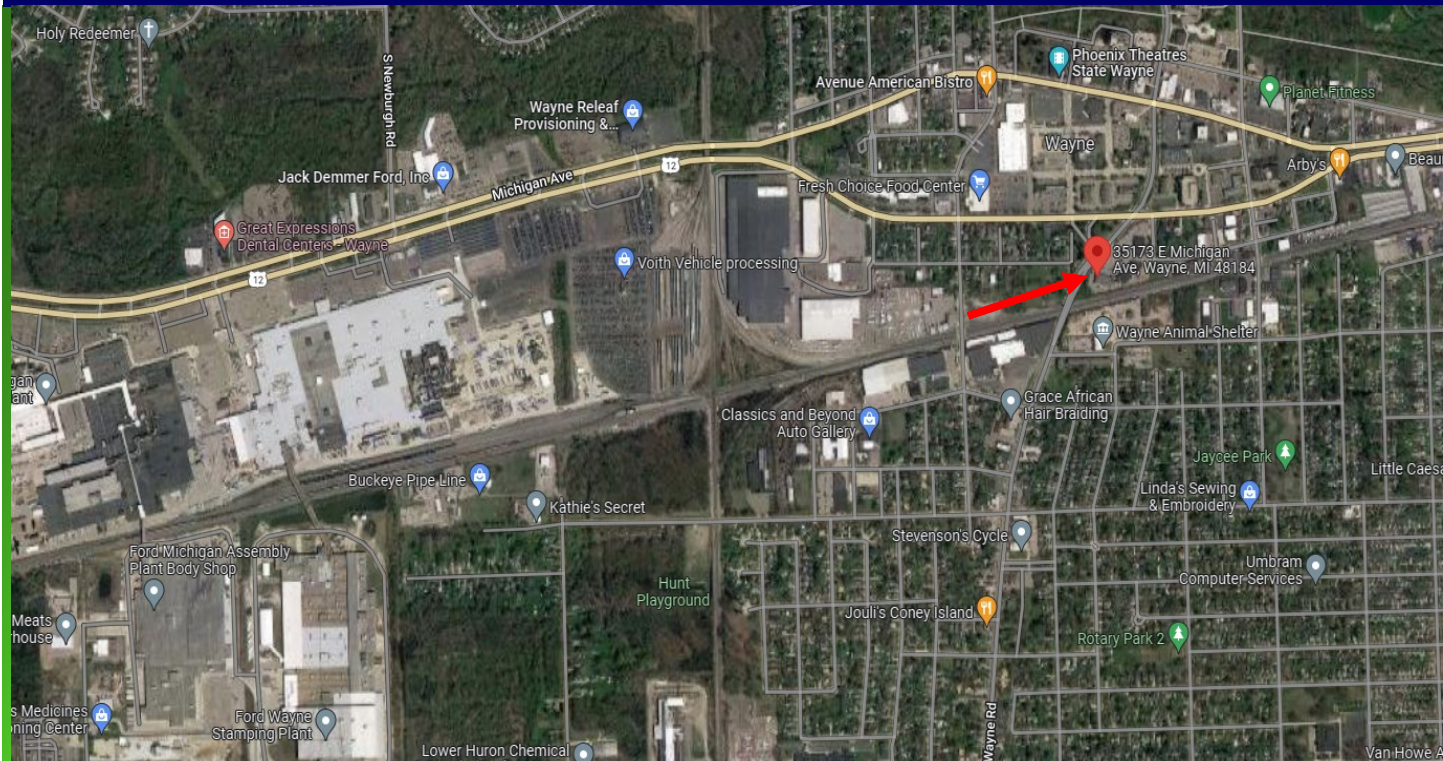
INTERIOR PHOTOS



**MEDICAL SPACE
AVAILABLE**

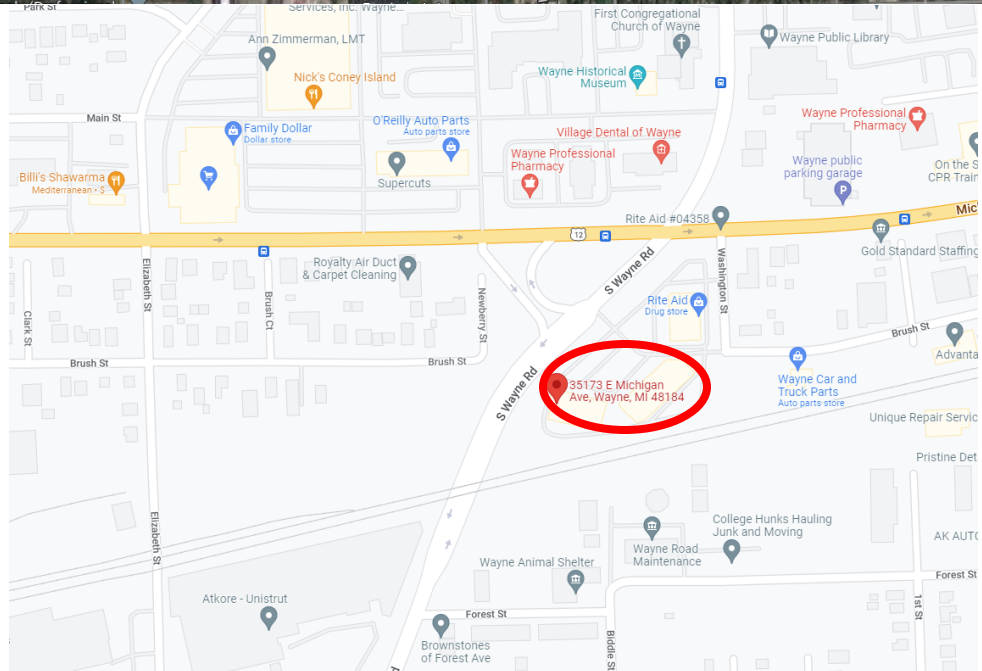


MAPS



**51863 Schoenherr Road
Suite 102, Shelby Township,
MI 48315**

Phone: 586-228-2232
Email: Larry@Hrgproperty.com
Jordan@Hrgproperty.com



OVERVIEW

- FORD Motor Company Assembly Plant is operating just WEST of Downtown Wayne.
- AMAZON Distribution Center including several national retailers & fast food restaurants operating within a 2 miles radius of center.

WEBSITE : www.HRGproperty.com