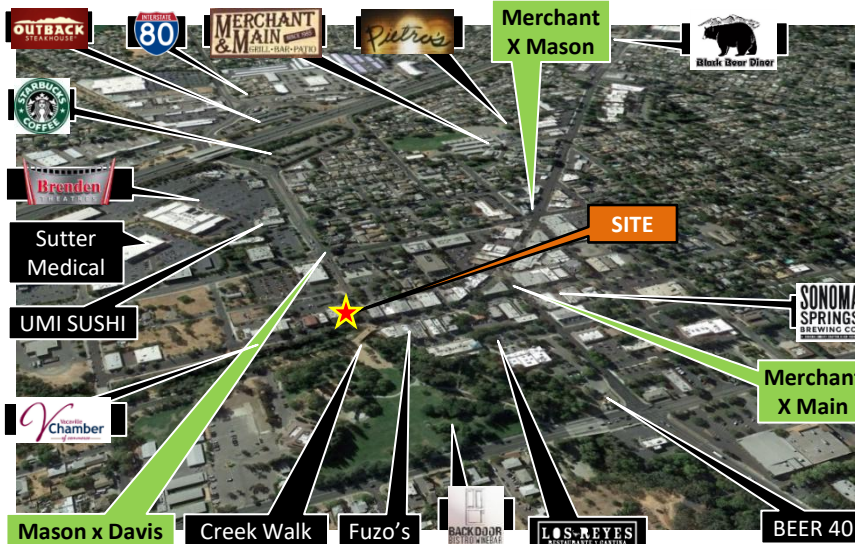


DOWNTOWN OFFICE SPACE FOR LEASE



600 E. MAIN ST. VACAVILLE, CA is a well-positioned building with first floor office space available ideal for Office users. Parking, signage, flexible interior and great window line. Users benefit from Downtown amenities, and classy presentation.



Property Features

Building	12,321 sf
Features	<ul style="list-style-type: none"> • First Floor Space • Parking • Downtown • Modern Build
Ste. 100 2,461sf	\$2.25/sf/mo Private Office, Conference Room, Storage, 2 Private RRs & Open Area. Call for pricing.
Ste. 102 1,857sf	\$2.25/sf/mo Private Office, Conference Room, Storage, 1 Private RR & Open Area. Call for pricing.
Ste. 100 Contiguous 4,318 sf	\$2.25/sf/mo FFE nego. Ground floor, open office, 3 private offices, conf room, 2 private restrooms, break room, 2 entries.

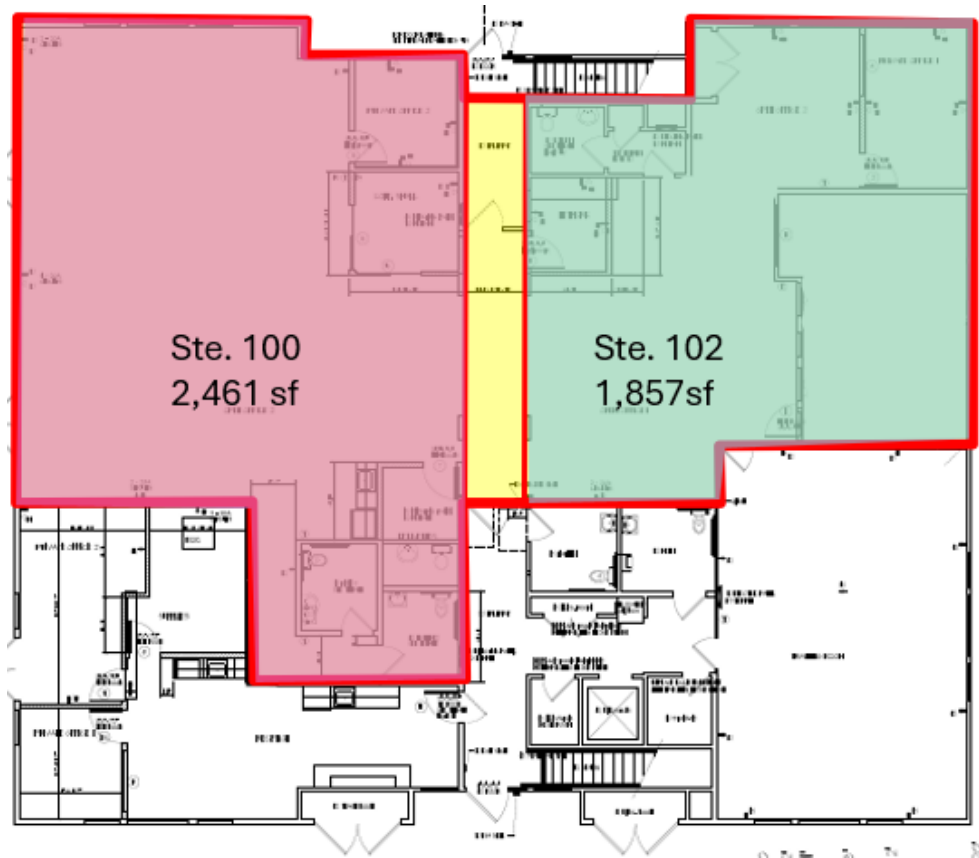
FOR MORE INFORMATION,
 PLEASE CALL 707-469-8000

Spectrum Properties
 Commercial Real Estate Services

785 Alamo Dr. Ste. 170
 Vacaville, CA 95688
www.SpectrumPropertiesRE.com

600 E. Main St.
Vacaville, CA 95688

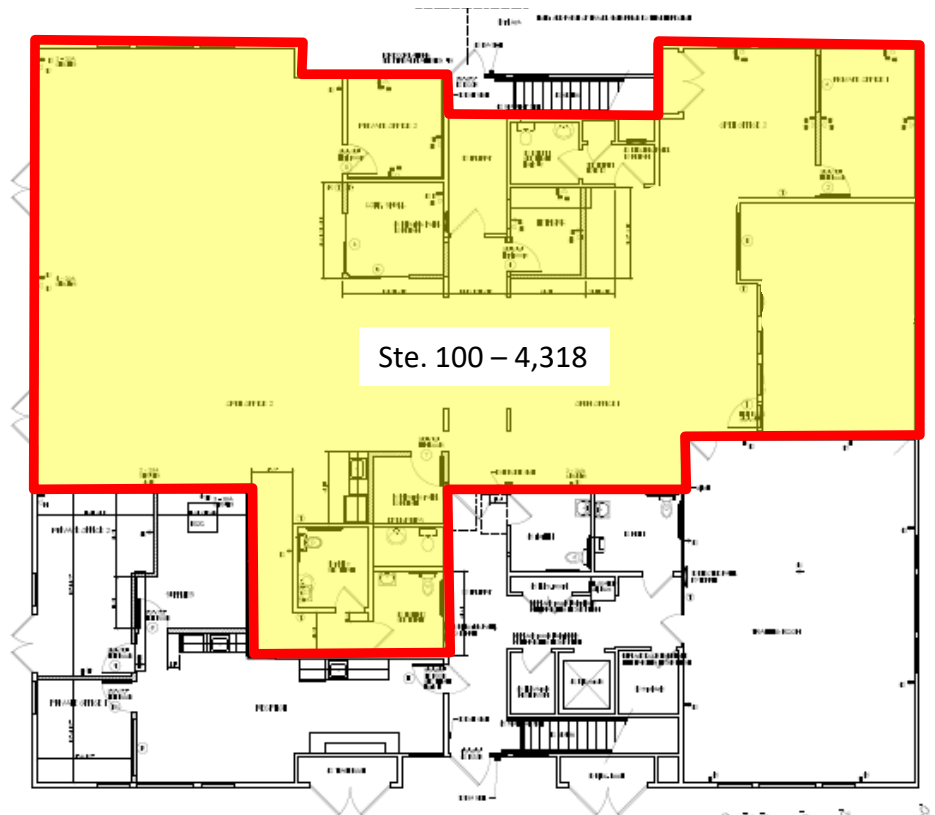
Option A
Ste. 100 – 2,461sf
Ste. 102 – 1,857sf



OFFERED FOR LEASE BY
SPECTRUM PROPERTIES

600 E. Main St.
Vacaville, CA 95688

Option B
Ste. 100 Contiguous - 4,318sf



OFFERED FOR LEASE BY
SPECTRUM PROPERTIES