



**Warehouse
Hotline**

FOR LEASE

1,891 SF Warehouse

7717 W. 6th Ave. Unit #E, Lakewood, CO

Available Now



**THIS SPACE IS
HALF WAREHOUSE
AND HALF OFFICE.**

PROPERTY HIGHLIGHTS

- Excellent location
- Clean space
- 3-year - 5-year term offered
- Drive-in door (10 ft)
- Heat in warehouse
- AC
- 11' clear height
- Excellent parking

MONTHLY RENT: \$2,666.31

CONTACT:



AVIVA SONENREICH

MANAGING BROKER

720-276-2717

aviva@warehousehotline.com



JOSH OAKLEY

BROKER ASSOCIATE

970-274-0077

josh@warehousehotline.com

The information contained herein was obtained from sources believed reliable; however, Warehouse Hotline makes no guarantees, warranties or representations as to the completeness or accuracy thereof.

The presentation on this property is submitted subject to errors, omission, changes of price, or conditions, prior to sale or lease, or withdrawal without notice.

RENT DETAILS

Asking = \$11.50 PSF = \$1,812.21

NNN = \$5.42 PSF = \$854.10

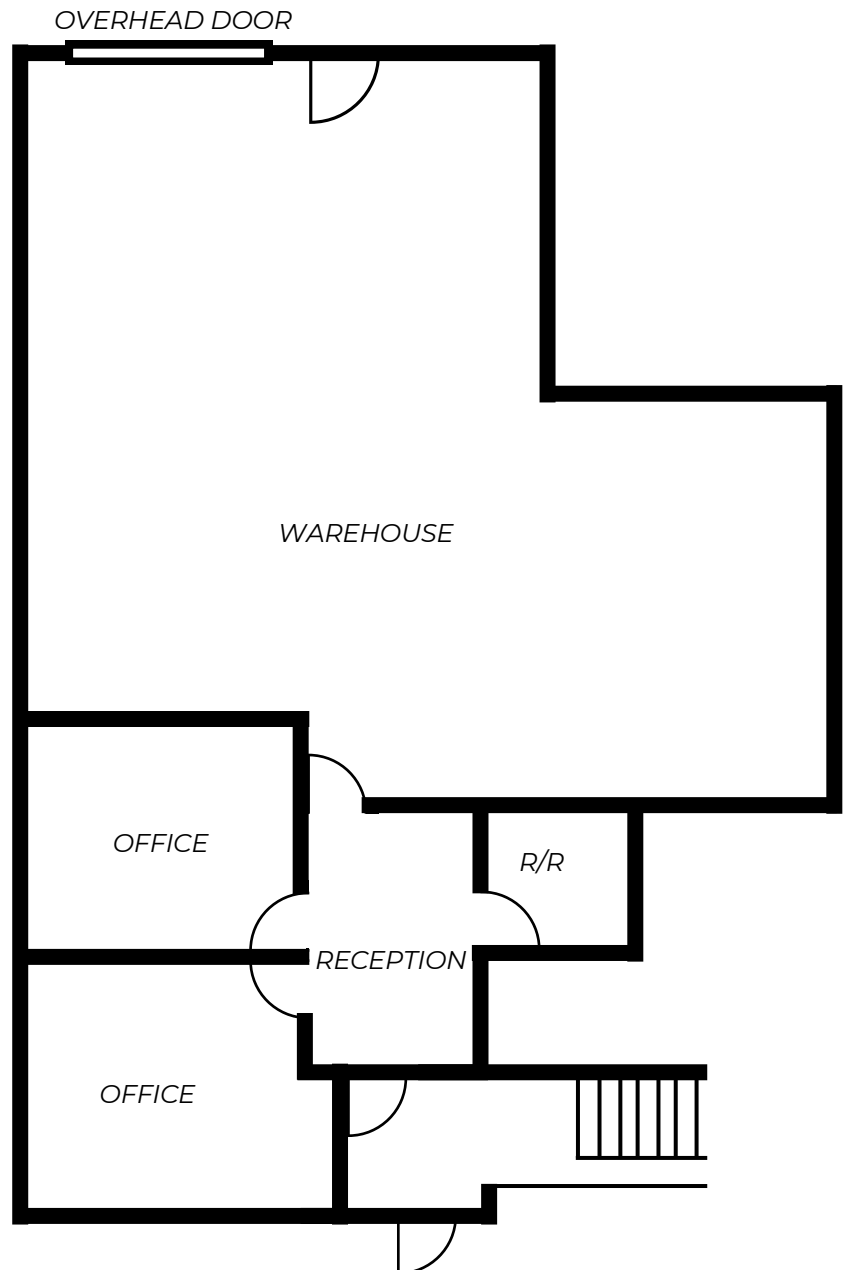
Total = \$2,666.31 per month

FLOOR PLAN



Warehouse Hotline

The floor plans provided are for informational purposes only and may not be to scale. While every effort has been made to ensure their accuracy, we cannot guarantee the completeness or correctness of the information presented. The floor plans are intended to give a general overview of the property layout and should not be relied upon as a definitive representation of the actual space.



CONTACT:



AVIVA SONENREICH
MANAGING BROKER
720-276-2717
aviva@warehousehotline.com



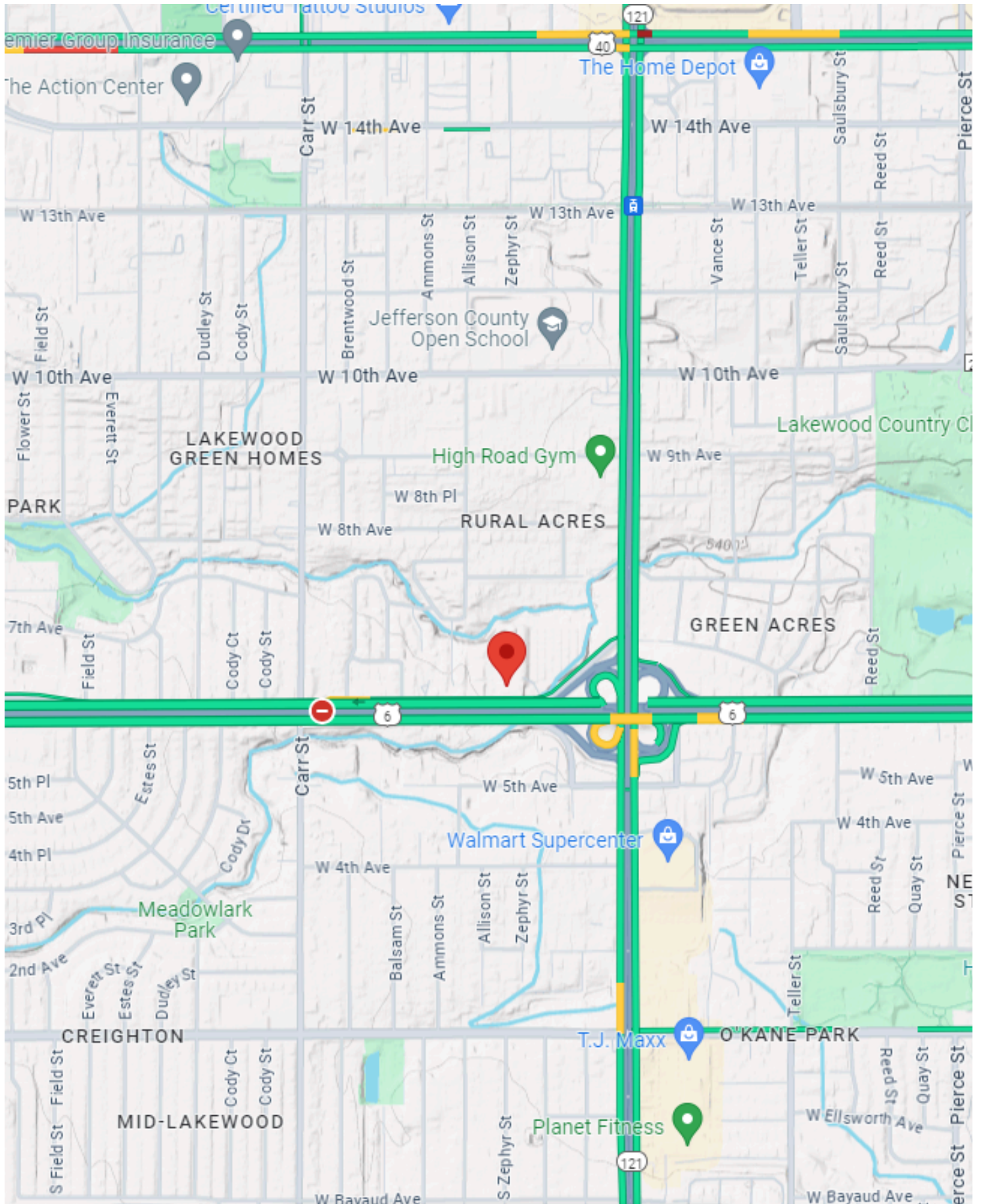
JOSH OAKLEY
BROKER ASSOCIATE
970-274-0077
josh@warehousehotline.com

The information contained herein was obtained from sources believed reliable; however, Warehouse Hotline makes no guarantees, warranties or representations as to the completeness or accuracy thereof. The presentation on this property is submitted subject to errors, omission, changes of price, or conditions, prior to sale or lease, or withdrawal without notice.

AERIAL SHOTS



LOCATION MAP



ADDITIONAL PHOTOS

