

GROUND FLOOR RETAIL WITH DRIVE THRU

402 WEST BROAD STREET, FALLS CHURCH, VA 22046



GROUND FLOOR RETAIL SPACE WITH DRIVE-THRU

402 WEST BROAD STREET, FALLS CHURCH, VA 22046

PROPERTY SUMMARY



OFFERING SUMMARY

Lease Rate:	Negotiable
Available SF:	2,405 SF
Lot Size:	0.69 Acres
Building Size:	32,637 SF

DEMOGRAPHICS	1 MILE	3 MILES	5 MILES
Total Households	8,212	56,945	171,384
Total Population	22,072	159,746	436,795
Average HH Income	\$238,507	\$216,321	\$203,258

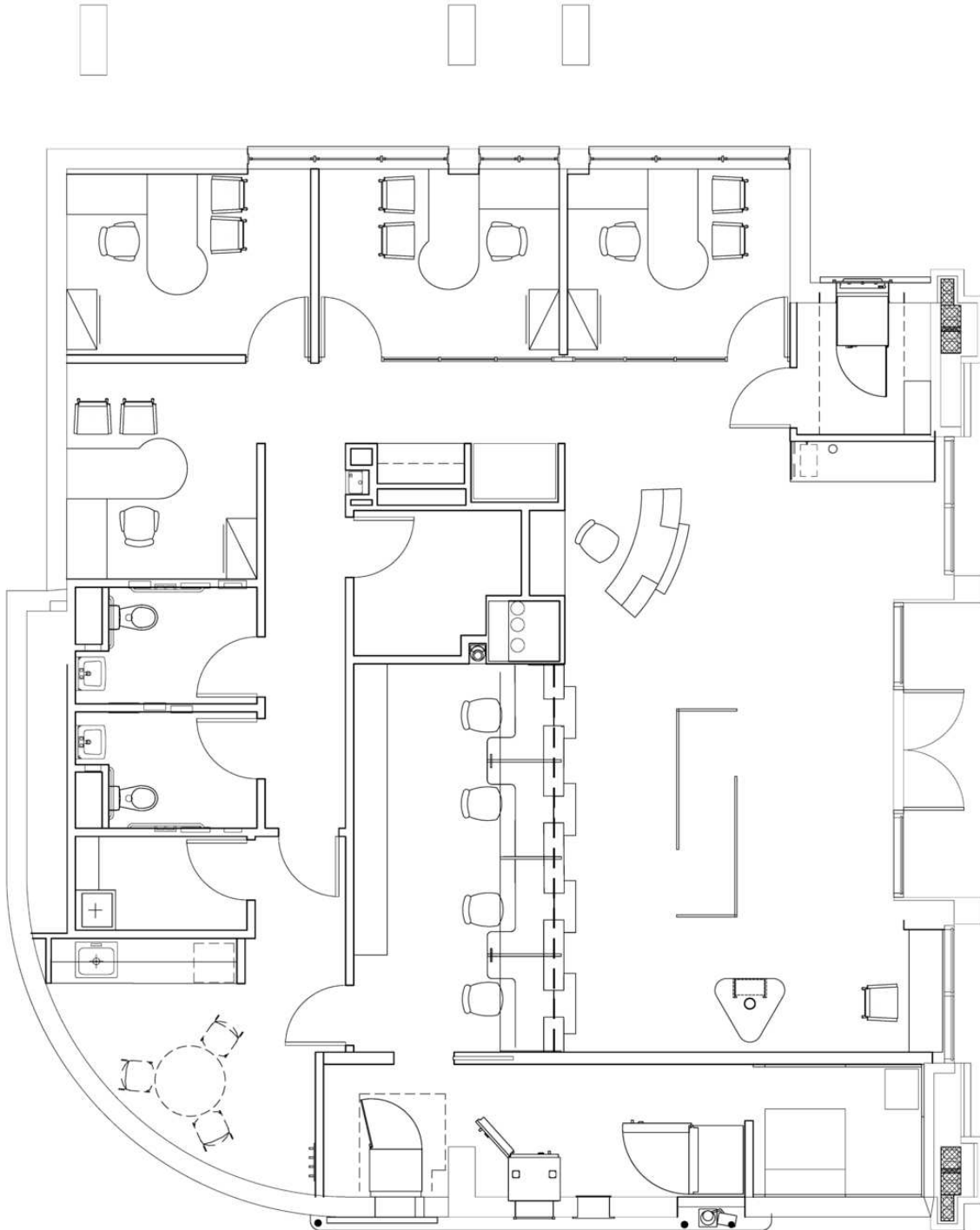
PROPERTY HIGHLIGHTS

- 2,405 SF first floor former bank space with drive thru.
- High visibility on West Broad Street (26,000 VPD) with prominent street frontage.
- 5/1,000 Parking Ratio (53 Parking Spaces for Commercial Users).
- Walk Score of 93 "Walkers Paradise".
- Located underneath 26 residential apartment units.
- Prominent signage opportunity.

GROUND LEVEL RETAIL SPACE WITH DRIVE-THRU

402 WEST BROAD STREET, FALLS CHURCH, VA 22046

FLOOR PLAN



GROUND FLOOR RETAIL SPACE WITH DRIVE-THRU

402 WEST BROAD STREET, FALLS CHURCH, VA 22046

ADDITIONAL PHOTOS



GROUND FLOOR RETAIL SPACE WITH DRIVE-THRU

402 WEST BROAD STREET, FALLS CHURCH, VA 22046

RETAILER MAP

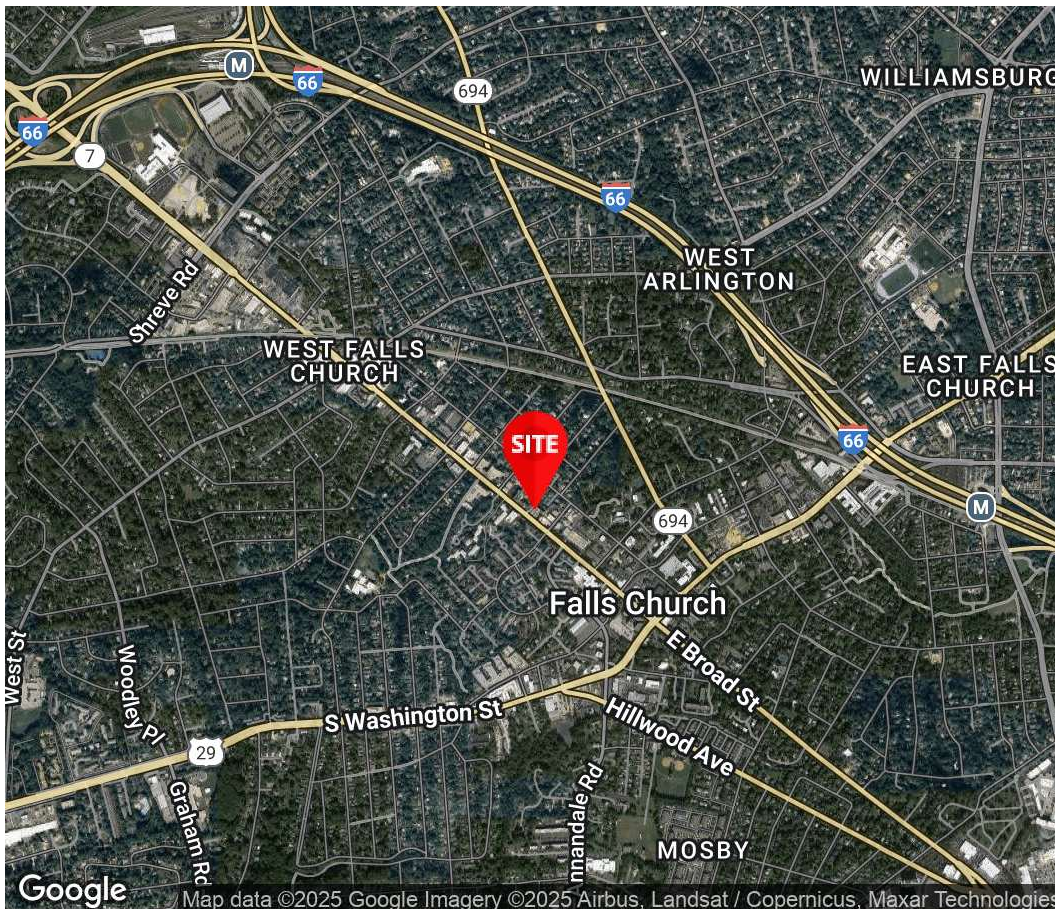
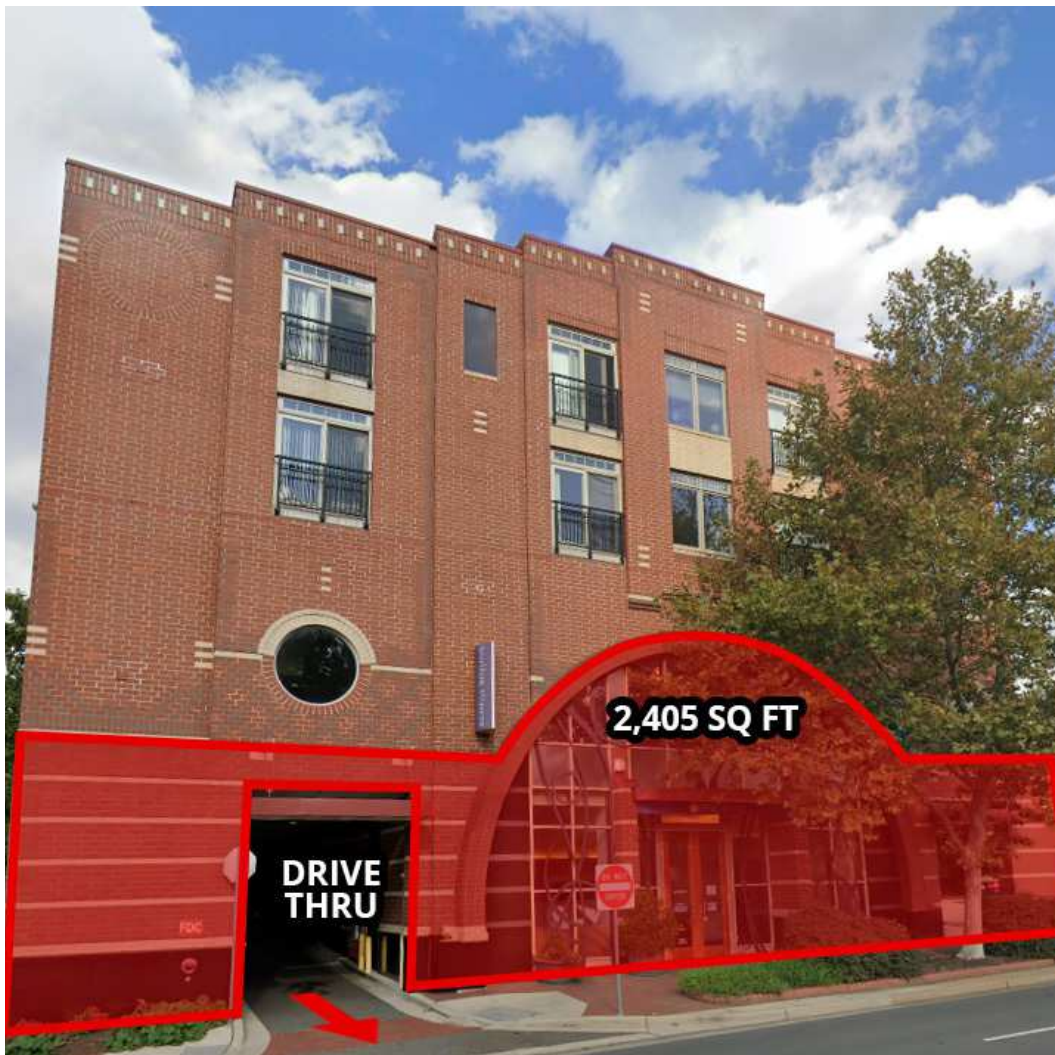


Joseph Farina

Principal

571.620.5142

jfarina@divaris.com



The information contained herein should be considered confidential and remains the sole property of Divaris Real Estate, Inc. at all times. Although every effort has been made to ensure accuracy, no liability will be accepted for any errors or omissions. Disclosure of any information contained herein is prohibited except with the express written permission of Divaris Real Estate, Inc.