

# FOR LEASE OFFICE CONDO



572 WALD, STE. 150 | IRVINE, CALIFORNIA

## PROPERTY OVERVIEW

Take advantage of this Wald Business Center opportunity! Offering approximately 2,085 square feet of two-story office space inside this office/warehouse industrial building with your own private entrance. Constructed in 2004, this building is light and bright and ideally located in the Irvine Spectrum among thousands of new businesses and surrounded by abundant amenities with quick and easy access to Interstate Highways parallel to the Pacific Coast.

## PROPERTY HIGHLIGHTS

- Two-Story Private Office Space
- Free Surface Parking 3.00/1,000
- Beautiful and Well-Maintained High-Image Business Park in the Irvine Submarket
- Easy Access to the 5, 405 and 133 Freeways

## OFFERING SUMMARY

Lease Rate:	\$1.95 SF/month (MG)
Building Size:	11,750 SF
Available SF:	2,085 SF

EXCLUSIVELY LISTED BY:

### John Manion

Executive Vice President  
949.468.2306 Direct  
jmanion@naicapital.com  
CA DRE #01247695

**NAI**Capital  
COMMERCIAL REAL ESTATE SERVICES, WORLDWIDE

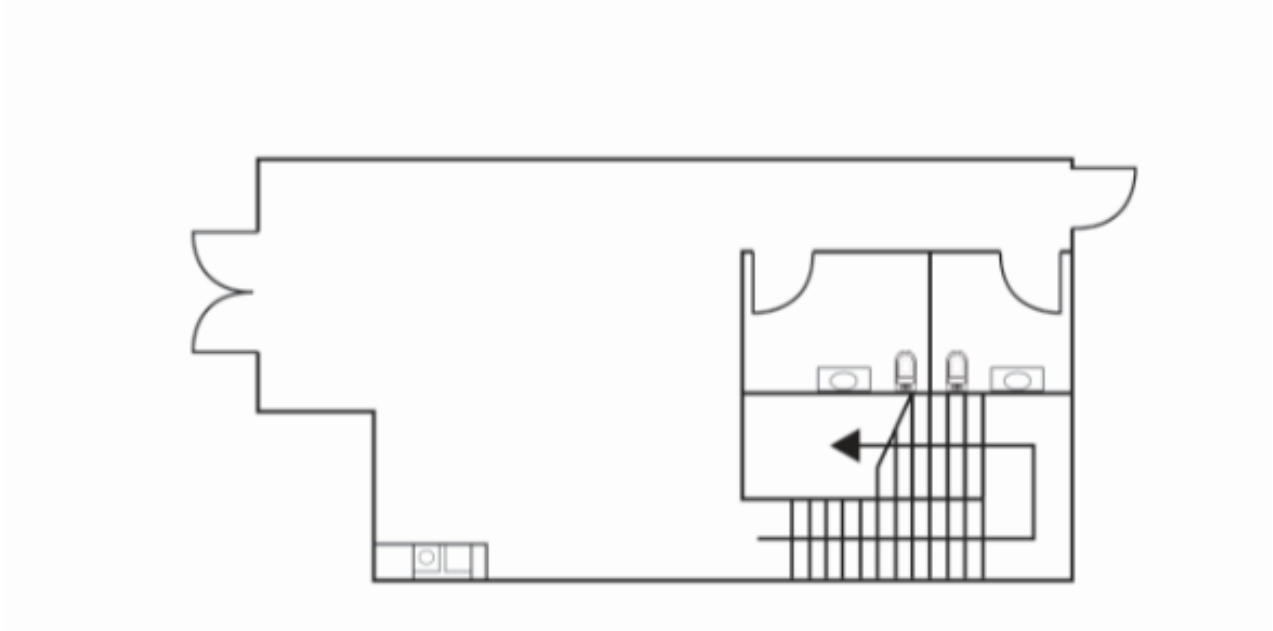
[www.naicapital.com](http://www.naicapital.com)



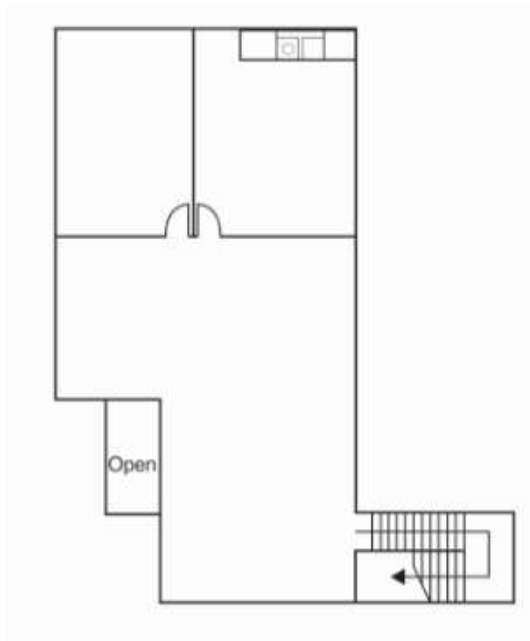


**John Manion**  
Executive Vice President  
949.468.2306 Direct  
jmanion@naicapital.com  
CA DRE #01247695

No warranty, express or implied, is made as to the accuracy of the information contained herein. This information is submitted subject to errors, omissions, change of price, rental or other conditions, withdrawal without notice, and is subject to any special listing conditions imposed by our principals. Cooperating brokers, buyers, tenants and other parties who receive this document should not rely on it, but should use it as a starting point of analysis, and should independently confirm the accuracy of the information contained herein through a due diligence review of the books, records, files and documents that constitute reliable sources of the information described herein. Logos are for identification purposes only and may be trademarks of their respective companies. NAI Capital Commercial, Inc. CAL DRE Lic. #02130474



1st Floor pLan



2nd Floor Plan

## John Manion

Executive Vice President  
949.468.2306 Direct  
jmanion@naicapital.com

CA DRE #01247695

No warranty, express or implied, is made as to the accuracy of the information contained herein. This information is submitted subject to errors, omissions, change of price, rental or other conditions, withdrawal without notice, and is subject to any special listing conditions imposed by our principals. Cooperating brokers, buyers, tenants and other parties who receive this document should not rely on it, but should use it as a starting point of analysis, and should independently confirm the accuracy of the information contained herein through a due diligence review of the books, records, files and documents that constitute reliable sources of the information described herein. Logos are for identification purposes only and may be trademarks of their respective companies. NAI Capital Commercial, Inc. CAL DRE Lic. #02130474





**John Manion**

Executive Vice President  
949.468.2306 Direct  
jmanion@naicapital.com

CA DRE #01247695

No warranty, express or implied, is made as to the accuracy of the information contained herein. This information is submitted subject to errors, omissions, change of price, rental or other conditions, withdrawal without notice, and is subject to any special listing conditions imposed by our principals. Cooperating brokers, buyers, tenants and other parties who receive this document should not rely on it, but should use it as a starting point of analysis, and should independently confirm the accuracy of the information contained herein through a due diligence review of the books, records, files and documents that constitute reliable sources of the information described herein. Logos are for identification purposes only and may be trademarks of their respective companies. NAI Capital Commercial, Inc. CAL DRE Lic. #02130474