

Atlee Square Shopping Center

For Lease: Retail / Flex Space
6,500 SF Available

9161 B Atlee Road | Mechanicsville (Hanover County), VA 23116



Parker Hall
(804) 339-7639 | parker@ccrealtyllc.com
Terry Earnest, CCIM
(804) 651-0274 | terry@ccrealtyllc.com

Chesterfield Commercial Realty
5001 West Village Green Drive, Suite 203
Midlothian, VA 23112
(804) 744-9290

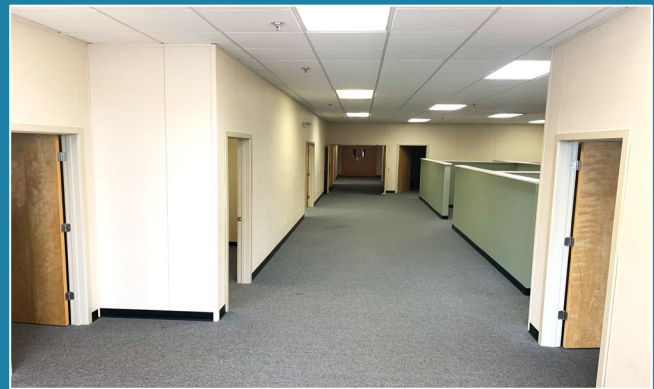
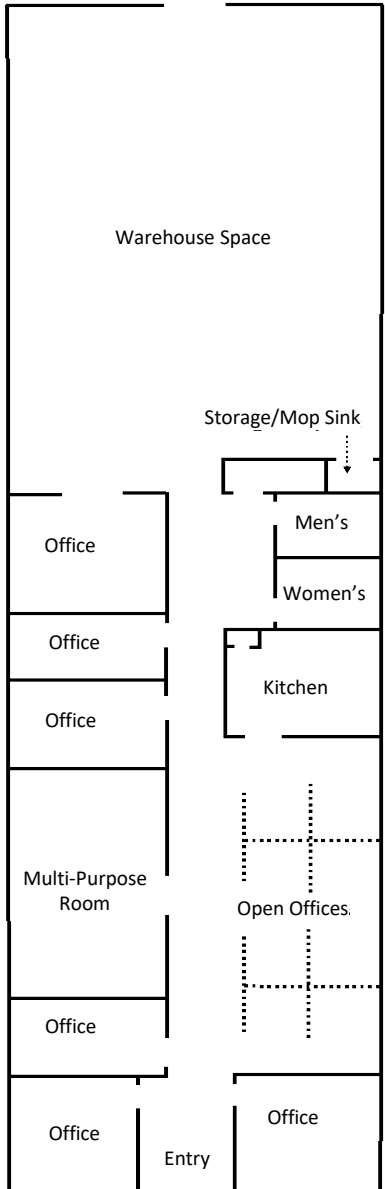
Atlee Square Shopping Center

9161 B Atlee Road | Mechanicsville (Hanover County), VA 23116

Property Details:

- 6,500 SF Retail / Flex Space Available
- Up to 17' Clear Ceiling Height in Warehouse
- Includes Six Large Individual Offices and an Open Office Area
- Close Access to I-295 & I-95 via Chamberlayne Road
- Join Tenants Like Dollar General, Brunetti's Express 301, Atlee Chiropractic Center, Senior Helpers, and Restoration Church
- **Asking Lease Rate: \$10 / SF NNN**

Join the rapidly expanding commercial and residential communities in Hanover County, next to Rutland Center Commons.



Atlee Square Shopping Center

9163 Atlee Road | Mechanicsville (Hanover County), VA 23116



Parker Hall
(804) 339-7639 | parker@ccrealtyllc.com
Terry Earnest, CCIM
(804) 744-9290 | terry@ccrealtyllc.com

Chesterfield Commercial Realty
5001 West Village Green Drive, Suite 203
Midlothian, VA 23112