

820 S 53rd Street

PHILADELPHIA, PA 19143

+/- 38,000 SF WAREHOUSE & +/- 4,800 SF OFFICE AVAILABLE



EXCLUSIVELY
REPRESENTED BY
THE FLYNN COMPANY

JOSEPH NASELLI
JNASELLI@FLYNNCO.COM
215-561-6565 X 155

BRENDAN FLYNN
BFLYNN@FLYNNCO.COM
215-561-6565 X 152

MICHAEL GALLAGHER
MGALLAGHER@FLYNNCO.COM
215-561-6565 X 151

The
Flynn
Company

AVAILABLE FOR LEASE

PROPERTY HIGHLIGHTS



Two interconnected warehouse buildings totaling +/- 38,000 SF



+/- 30,000 SF column free warehouse building



+/- 8,000 SF Warehouse best suited for storage with ramp access to main building



14' Clear heights throughout



Large 20' x 13' drive-in door



Additional +/- 4,800 SF building currently used as 1st floor hardware store and 2nd floor office



Sits on 46,959 SF of land



Zoned ICMX

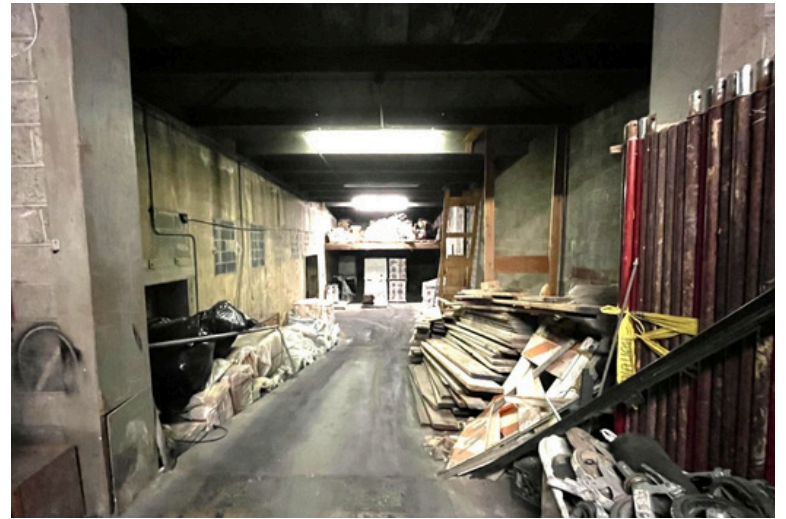


Gated entrance with outside storage and parking

THE FLYNN COMPANY

WWW.FLYNNCO.COM | 1621 WOOD STREET, PHILADELPHIA, PA 19103 | 215.561.6565

Property Photo's





FOR MORE INFORMATION PLEASE CONTACT:

JOSEPH NASELLI

JNASELLI@FLYNNCO.COM

215-561-6565 X 155

BRENDAN FLYNN

BFLYNN@FLYNNCO.COM

215-561-6565 X 152

MICHAEL GALLAGHER

MGALLAGHER@FLYNNCO.COM

215-561-6565 X 151

THE FLYNN COMPANY

SALES & LEASING | PROPERTY MANAGEMENT | CONSTRUCTION SERVICES | PROPERTY MAINTENANCE

WWW.FLYNNCO.COM | 1621 WOOD STREET, PHILADELPHIA, PA 19103 | 215.561.6565