



600 W WILBUR AVE

INDUSTRIAL SPACE FOR SUBLEASE | COEUR D'ALENE, ID 83815

CONTACT

DANNY DAVIS, CCIM
208.691.6003
danny@tokcommercial.com

HIGHLIGHTS

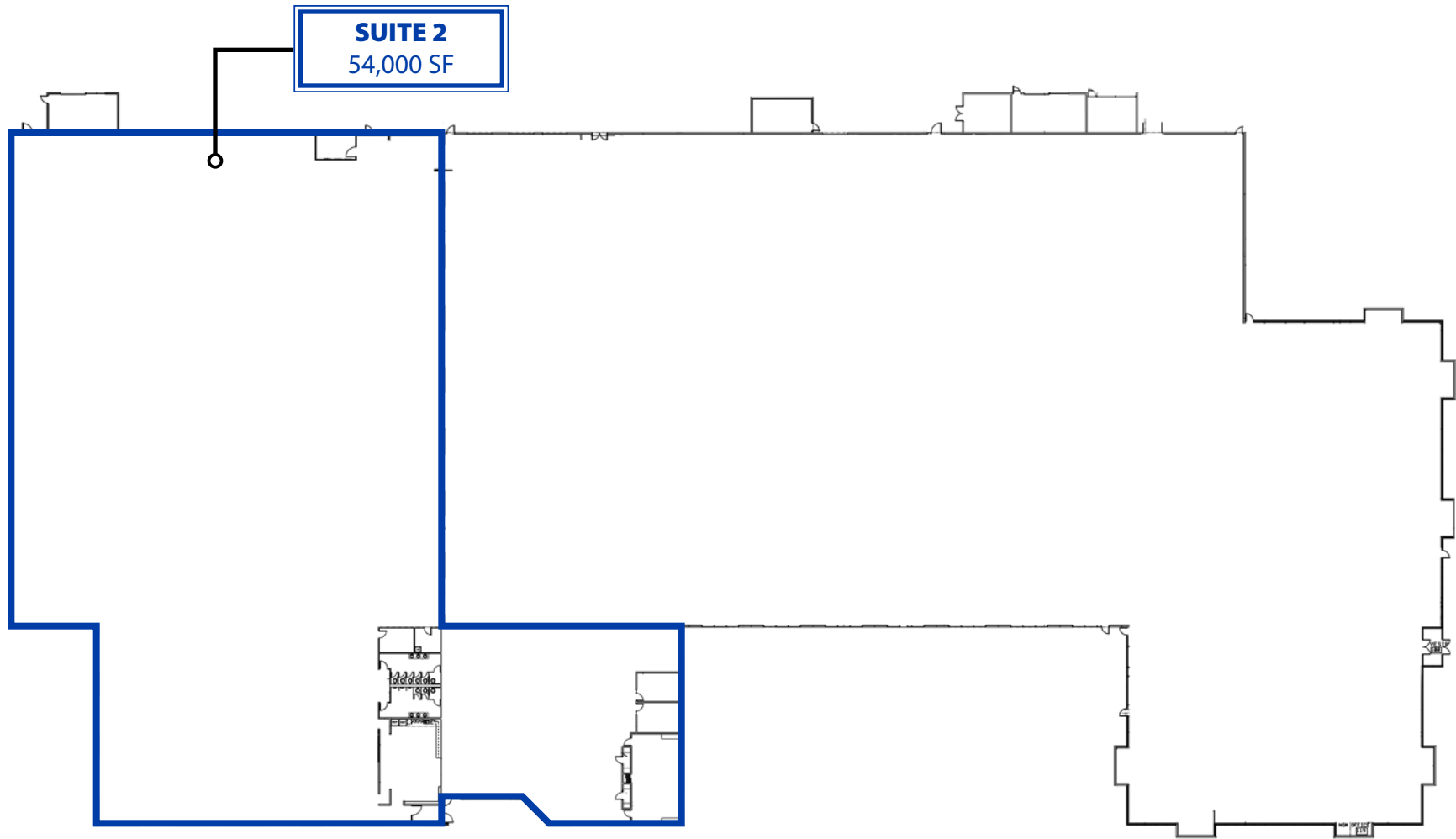
- Concrete tilt-up construction with modern glass façade
- Large secured site offering ample parking and loading access
- Four shared loading docks, two of which are at grade level
- Flexible layout suitable for manufacturing or technology users
- Easy access to major arterials and nearby commercial

DETAILS

AVAILABLE	SIZE	RATE
Suite 2	54,000 SF	\$10.80/SF/yr, NNN

LOT SIZE:	13.21 Acres	ZONING:	LM
BLDG SIZE:	139,184 SF	LEASE TYPE:	NNN
YEAR BUILT:	1998	EST NNN'S:	\$2.60/SF
POWER:	3-Phase; 600 amps	AVAILABLE:	Immediately
DOCK DOORS:	2 (Shared)	SUBLEASE THRU:	Feb. 2028
GRADE DOORS:	2 (Shared)		

FLOOR PLANS



600 W WILBER AVE

UPDATED: 10.22.2025 THIS PROPERTY IS EXCLUSIVELY MARKETING BY TOK INLAND NORTHWEST LLC DBA TOK COMMERCIAL This information was obtained from sources believed reliable but cannot be guaranteed. Any opinions or estimates are used for example only.

TOKCOMMERCIAL.COM



600 W WILBER AVE

UPDATED: 10.22.2025

THIS PROPERTY IS EXCLUSIVELY MARKETING BY TOK INLAND NORTHWEST LLC DBA TOK COMMERCIAL. This information was obtained from sources believed reliable but cannot be guaranteed. Any opinions or estimates are used for example only.

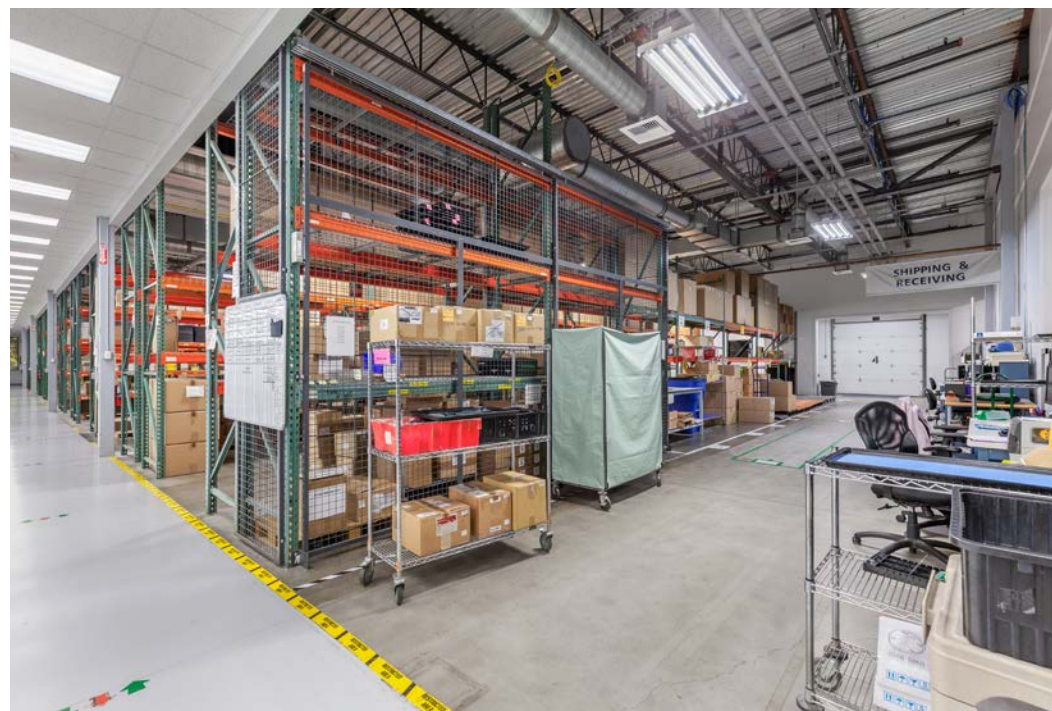
TOKCOMMERCIAL.COM



600 W WILBER AVE

UPDATED: 10.22.2025 THIS PROPERTY IS EXCLUSIVELY MARKETING BY TOK INLAND NORTHWEST LLC DBA TOK COMMERCIAL This information was obtained from sources believed reliable but cannot be guaranteed. Any opinions or estimates are used for example only.

TOKCOMMERCIAL.COM



600 W WILBER AVE

UPDATED: 10.22.2025 THIS PROPERTY IS EXCLUSIVELY MARKETING BY TOK INLAND NORTHWEST LLC DBA TOK COMMERCIAL This information was obtained from sources believed reliable but cannot be guaranteed. Any opinions or estimates are used for example only.

TOKCOMMERCIAL.COM



600 W WILBER AVE

UPDATED: 10.22.2025

THIS PROPERTY IS EXCLUSIVELY MARKETING BY TOK INLAND NORTHWEST LLC DBA TOK COMMERCIAL. This information was obtained from sources believed reliable but cannot be guaranteed. Any opinions or estimates are used for example only.

TOKCOMMERCIAL.COM



DOWNTOWN CDA

US
95

SITE

SILVERLAKE MALL

McDonald's Applebee's

Planet Fitness Bath Works Black Sheep Hair Right's

33,403 VPD

McDonald's

Olive Garden

W CANFIELD AVE

Aaron's Rent to Own ULTA TJ Maxx

petco THE HEALTH + WELLNESS CO. SIERRA TRADING POST

ADVANCED INPUT SYSTEMS

W WILBUR AVE

600 W WILBER AVE

UPDATED: 10.22.2025

THIS PROPERTY IS EXCLUSIVELY MARKETING BY TOK INLAND NORTHWEST LLC DBA TOK COMMERCIAL. This information was obtained from sources believed reliable but cannot be guaranteed. Any opinions or estimates are used for example only.

TOKCOMMERCIAL.COM



KOHL'S



35,189 VPD



W WILBUR AVE

SITE

ADVANCED
INPUT SYSTEMS

Aaron's
Rent to Own

ULTA

TJ-maxx

petco
THE HEALTH +
WELLNESS CO.

SIERRA
TRADING POST

600 W WILBER AVE

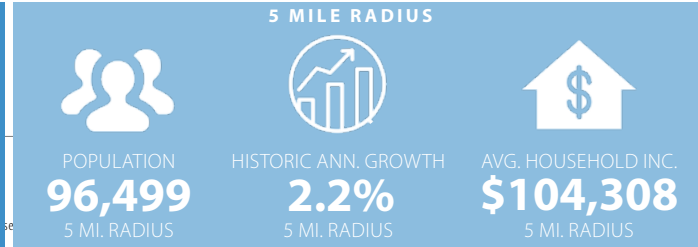
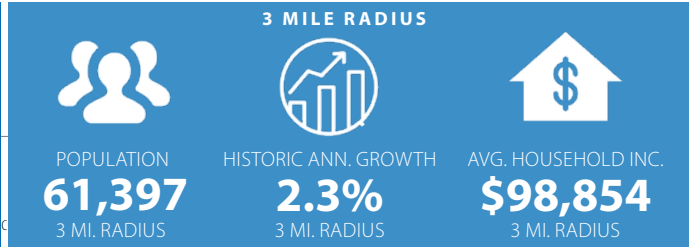
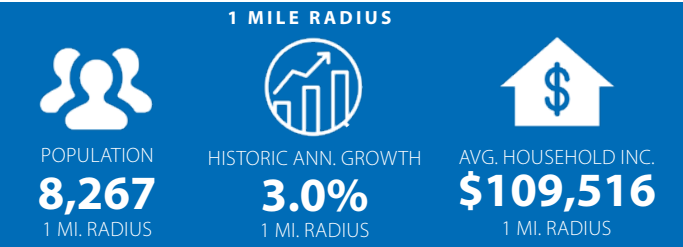
UPDATED: 10.22.2025

THIS PROPERTY IS EXCLUSIVELY MARKETING BY TOK INLAND NORTHWEST LLC DBA TOK COMMERCIAL. This information was obtained from sources believed reliable but cannot be guaranteed. Any opinions or estimates are used for example only.

TOKCOMMERCIAL.COM

AERIAL MAP

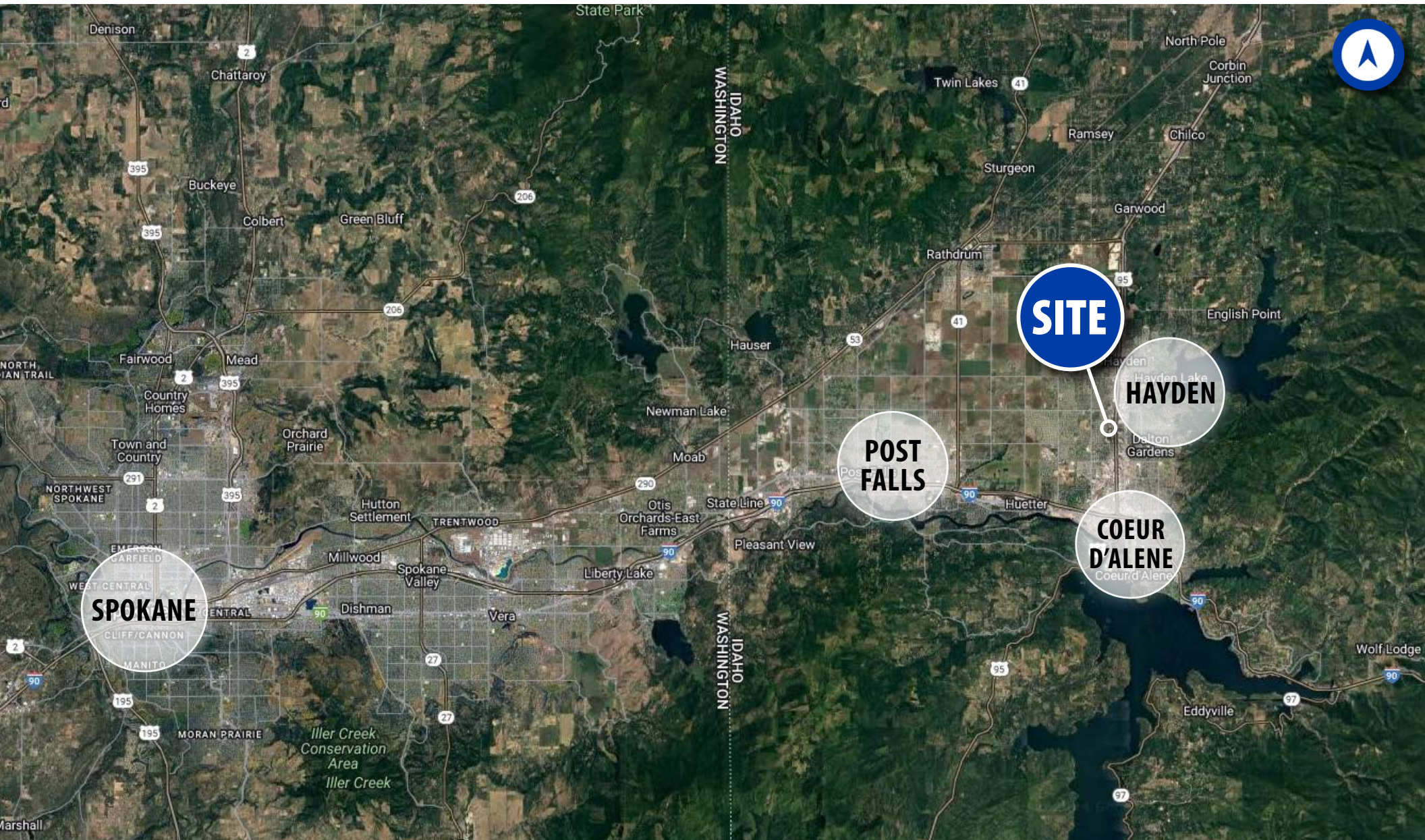
SURROUNDED BY AMENITIES



AERIAL MAP

12 MIN TO COEUR D'ALENE

35 MIN TO SPOKANE



600 W WILBER AVE

UPDATED: 10.22.2025

THIS PROPERTY IS EXCLUSIVELY MARKETING BY TOK INLAND NORTHWEST LLC DBA TOK COMMERCIAL. This information was obtained from sources believed reliable but cannot be guaranteed. Any opinions or estimates are used for example only.

TOKCOMMERCIAL.COM