



# 100

## Willow Brook Road

**MONMOUTH EXECUTIVE CENTER**  
**FREEHOLD, NJ**

---

### Up to 42,248 RSF of Contiguous Office Space Available

- 1<sup>st</sup> Floor, Space A 20,434 SF
- 1<sup>st</sup> Floor, Space B 4,437 SF
- 1<sup>st</sup> Floor, Space C 11,529 SF
- 1<sup>st</sup> Floor, Space D 5,848 SF

### Located at Monmouth Executive Center

4-building campus with café, fitness center, tenant lounge, and conference center

---

*For information, please contact:*

**Adam Silver**

*Managing Director*

t 732-867-9555

adam.silver@nmrk.com

One Tower Center  
Boulevard, Suite 1201  
East Brunswick, NJ 08816



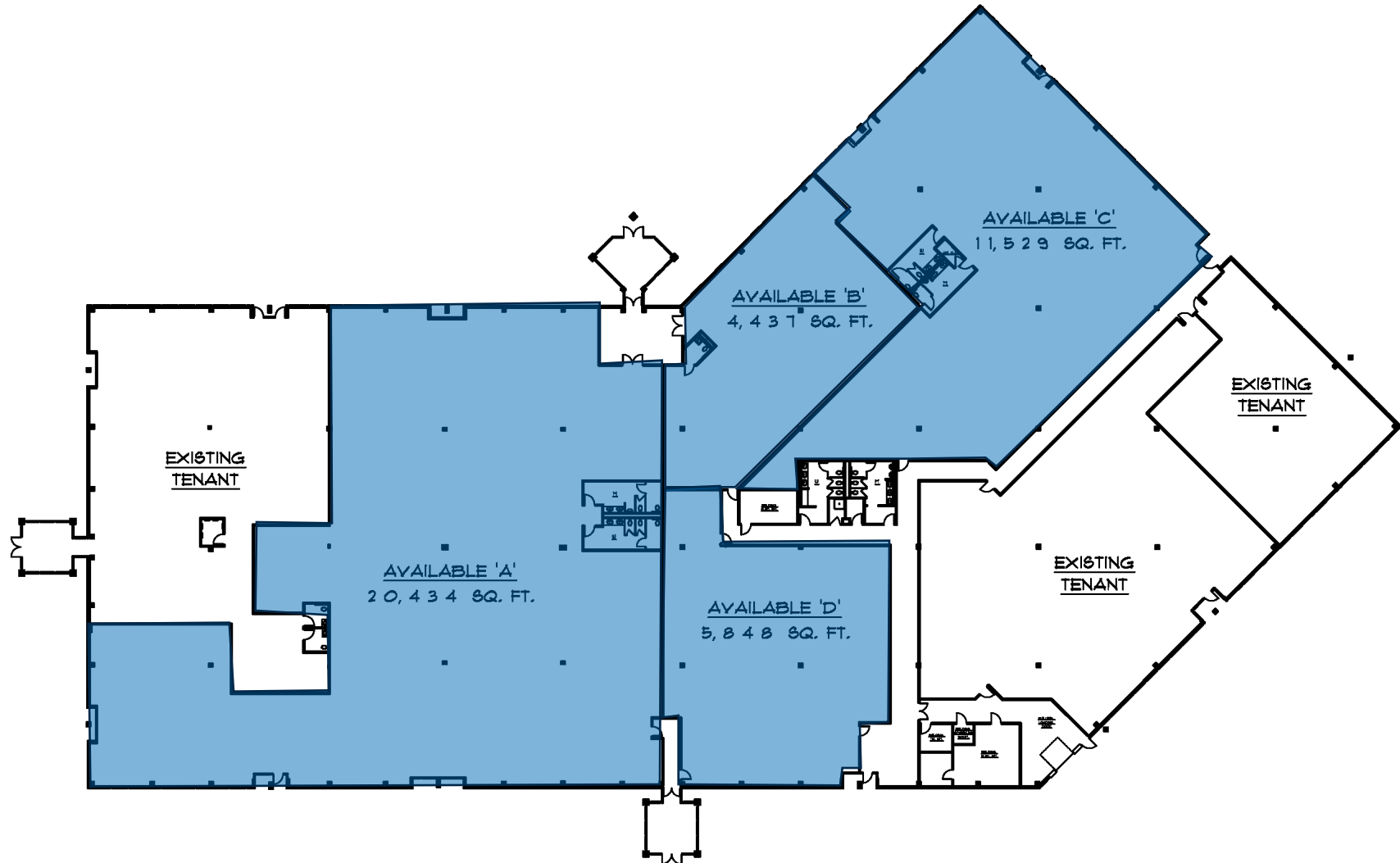
[nmrk.com](http://nmrk.com)

**NEWMARK**

Newmark, Licensed Real Estate Broker 732-867-9001

The information contained herein has been obtained from sources deemed reliable but has not been verified and no guarantee, warranty or representation, either express or implied, is made with respect to such information. Terms of sale or lease and availability are subject to change or withdrawal without notice.

# Floor Plan: 100 Willow Brook Road





---

### AMENITIES

- Tenant lounge with café
- Fitness center with locker rooms and showers
- conference/training center

---

### UPGRADED COMMON AREAS

---

### EXTERIOR TENANT DIRECTORIES

---

### ON-SITE MANAGEMENT

---





# Monmouth Executive Center 4-Building Campus

## 100 Willow Brook Road

Available: Up to 42,248 SF

## 2 Paragon Way

Available: 6,857 SF

## 3 Paragon Way

Available: 2,653 SF

## 4 Paragon Way

Fully leased

### Location

- Located at the four-way interchange of the Route 33 bypass and Halls Mill Road
- Strategically located just minutes from Routes 9, 18, I-195 and downtown Freehold Borough
- Close to the Freehold Raceway Mall, CentraState Medical Center, Monmouth County Courthouse and area hotels

**NEWMARK**

