

One Culver

10000 Washington
Boulevard

Space
availability
summary

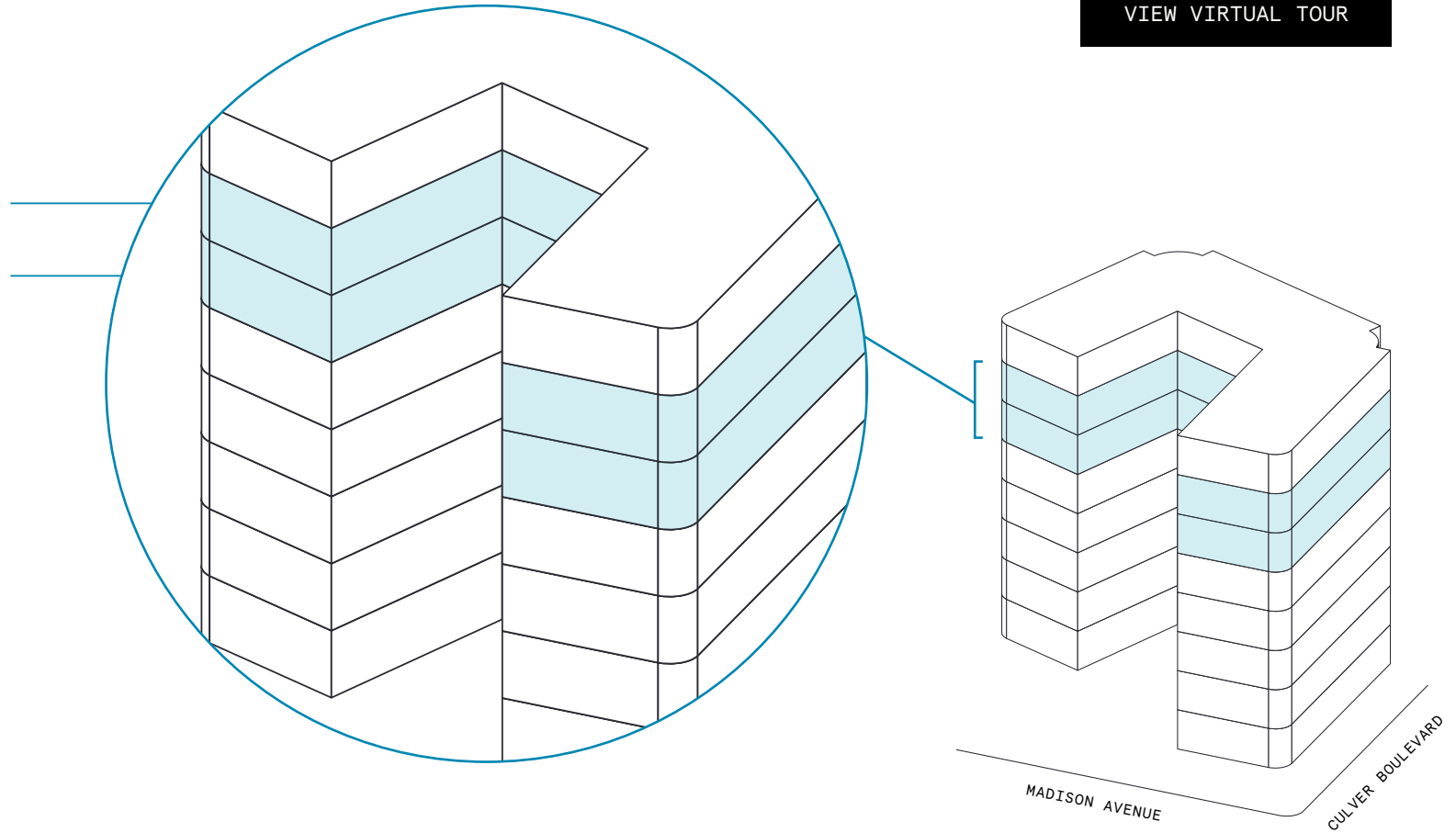
WeWork @ 10000 Washington Boulevard
Los Angeles, CA

wework × **CBRE**

[VIEW VIRTUAL TOUR](#)

7th Floor 34,056 RSF

6th Floor 36,165 RSF



70,221 RSF

TOTAL WEWORK RSF

One Culver

At a glance

Brand new suites offering flexible size & term

8

TOTAL BUILDING FLOORS

Dedicated, private
suites available from
71 to 9,507 RSF

Move-in ready suites -
furnished & wired

363,548

TOTAL BUILDING SQ FT

All dimensions are approximate and subject to variances. It is your obligation to independently verify the particulars of the property. WeWork reserves the right to make changes.



WeWork's in-house team of lighting specialists designed each space to make comfort and feeling the main priority.



Common lounges featuring bright color-filled areas provide a spacious setting for our members to work in.

Old Hollywood meets modern creativity

Designed by noted architect Maxwell Starkman, One Culver is an eight-story, 363,548 square foot building in the heart of Culver City. Originally built in 1986, the space was renovated in 2017 by global design and architecture firm Gensler. This landmark building features over 50,000 square feet of outdoor terrace space, lush landscaping, and modern, light-filled workspaces. WeWork's more than 70,000 square feet of space features a mix of private offices, meeting rooms, and common lounges, giving members total freedom to choose where and how they work. With an open, light-filled floorplate and plenty of color, this space is sure to inspire creativity, productivity, and collaboration.



Ample seating and a neutral color palette ensure focused work with plenty of space to collaborate.

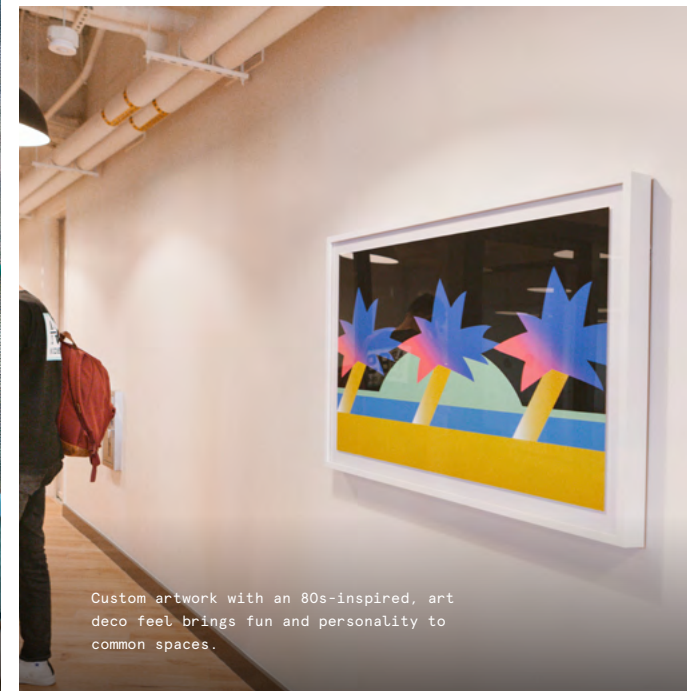


Landscaped rooftop spaces allow members to take advantage of the sweeping views and gorgeous SoCal weather.

Explore Culver City from your new workspace

The workspace combines a bold, retro-modern style with contemporary design elements, creating a uniquely creative space with professional polish.

- Oversized windows flood common areas and meeting spaces with natural light
- Prints and photography sourced from a selection of artists and graphic designers are featured throughout
- A mix of clean, modern forms and unexpected design moments create a balanced yet engaging atmosphere





Oversized windows throughout the space give you ample natural light and the best views surrounding One Culver.



Private rooms are available for small team meetings and impromptu brainstorming sessions alike.

On-site amenities

- 24/7 security
- Electronic keycard access
- Web-based visitor access
- Business-class printers
- Professional and social events
- Barista/cafe
- Private meeting rooms
- Mother's room
- Wellness/meditation room
- Event space
- Phone booths
- Landscaped plaza
- Dog-friendly spaces
- Bicycle storage
- On-site parking
- Access to car charging stations

Building specifications



Hours of operation

Monday - Friday: 8am-6pm



Security

24/7 attended lobby



HVAC

Monday - Friday: 7am-6pm



Building history

Built in 1986



Elevators

4 passenger elevators
2 freight elevators



Fire strategy

Fully-sprinklered floors



Building size

8 stories
363,548 SF



Certifications

LEED Gold certified
Fitwel certified











Fully enjoy the best of Culver City

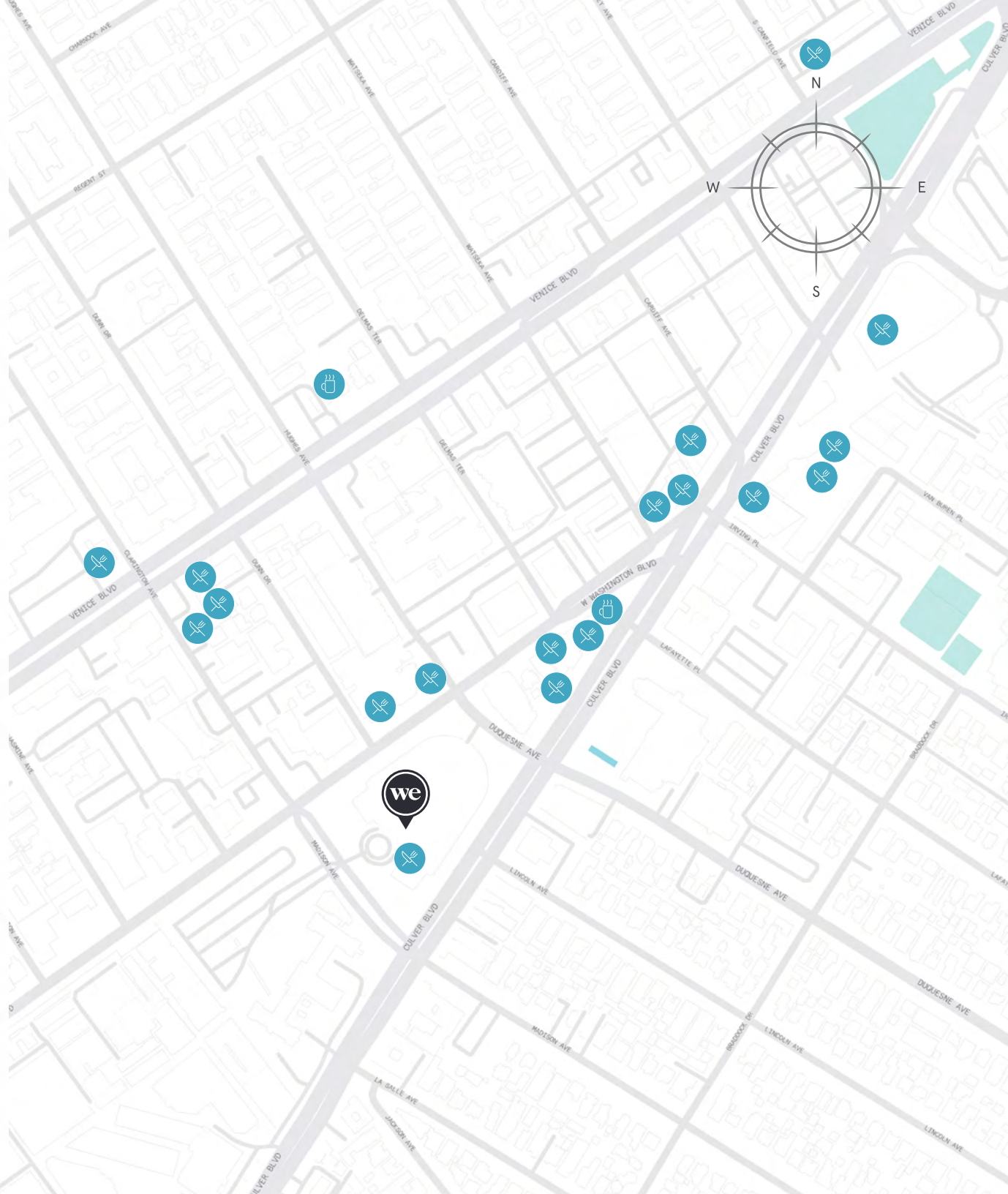
Combining modern design elements, an exciting, accessible location, and California's unbeatable climate, One Culver clearly presents itself as one of the leading choices for those looking for new office space.

Culver City itself is located in the film capital of California. Surrounded by a bevy of fantastic restaurants, bars, and contemporary galleries throughout the neighborhood, there's no shortage of options for after-work entertainment. What's more, One Culver is also situated across the street from Sony Studios, home to notable film and television sound stages like Jeopardy!

One Culver is also an ideal location for commuters with its underground parking lot, access to the 5, and 7 lines a block away, and just 5 minutes from Santa Monica Freeway/I-10.

Distance to WeWork

Culver City Transit Stop	 Walk	15 min
Culver City Bus Line - Washington Boulevard/ Hughes Avenue	 Walk	1 min
Culver City Bus Line - Washington Boulevard/ Clarington Avenue	 Walk	1 min
Culver City Bus Line - Washington Boulevard/ Madison Avenue	 Walk	1 min
Culver City Bus Line- Washington Boulevard/ Duquesne Avenue	 Walk	1 min
Culver City Bus Line- Culver Boulevard / Duquesne Avenue	 Walk	1 min
Culver City Bus Line- Culver Boulevard / Madison Avenue	 Walk	1 min
Los Angeles International Airport	 Drive	25 min
405 Freeway	 Drive	15 min
10 Freeway	 Drive	15 min



6th Floor

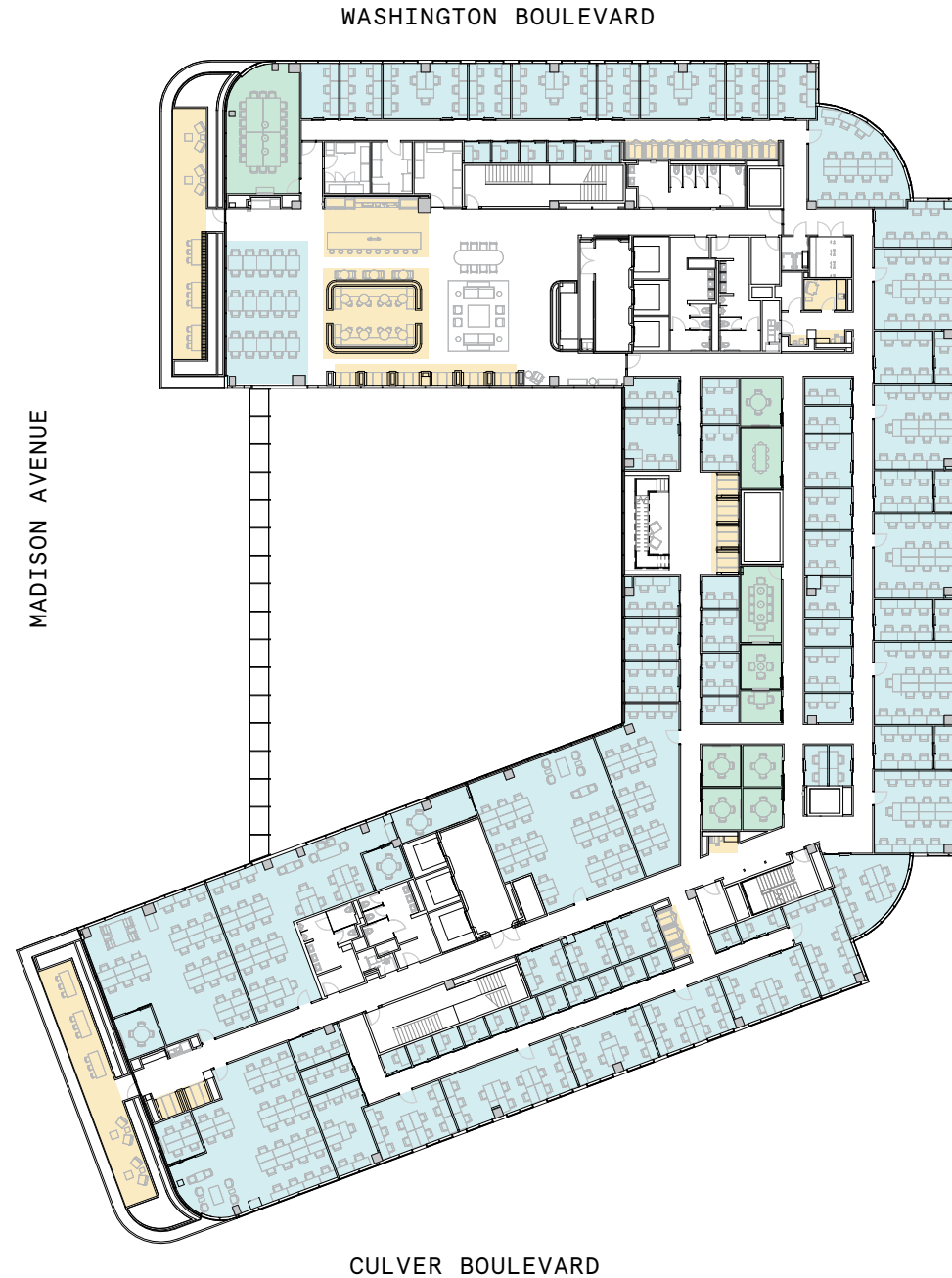
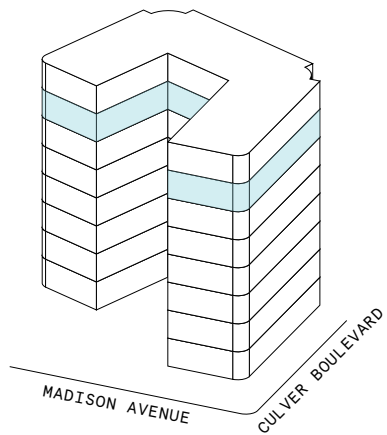
36,165 RSF

10
MEETING ROOM(S)

11
SHARED WORKSPACE(S)

LEGEND

- MEETING ROOM
- SHARED WORKSPACE
- DEDICATED SPACE

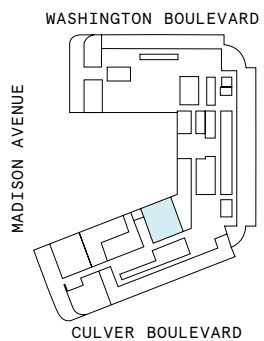
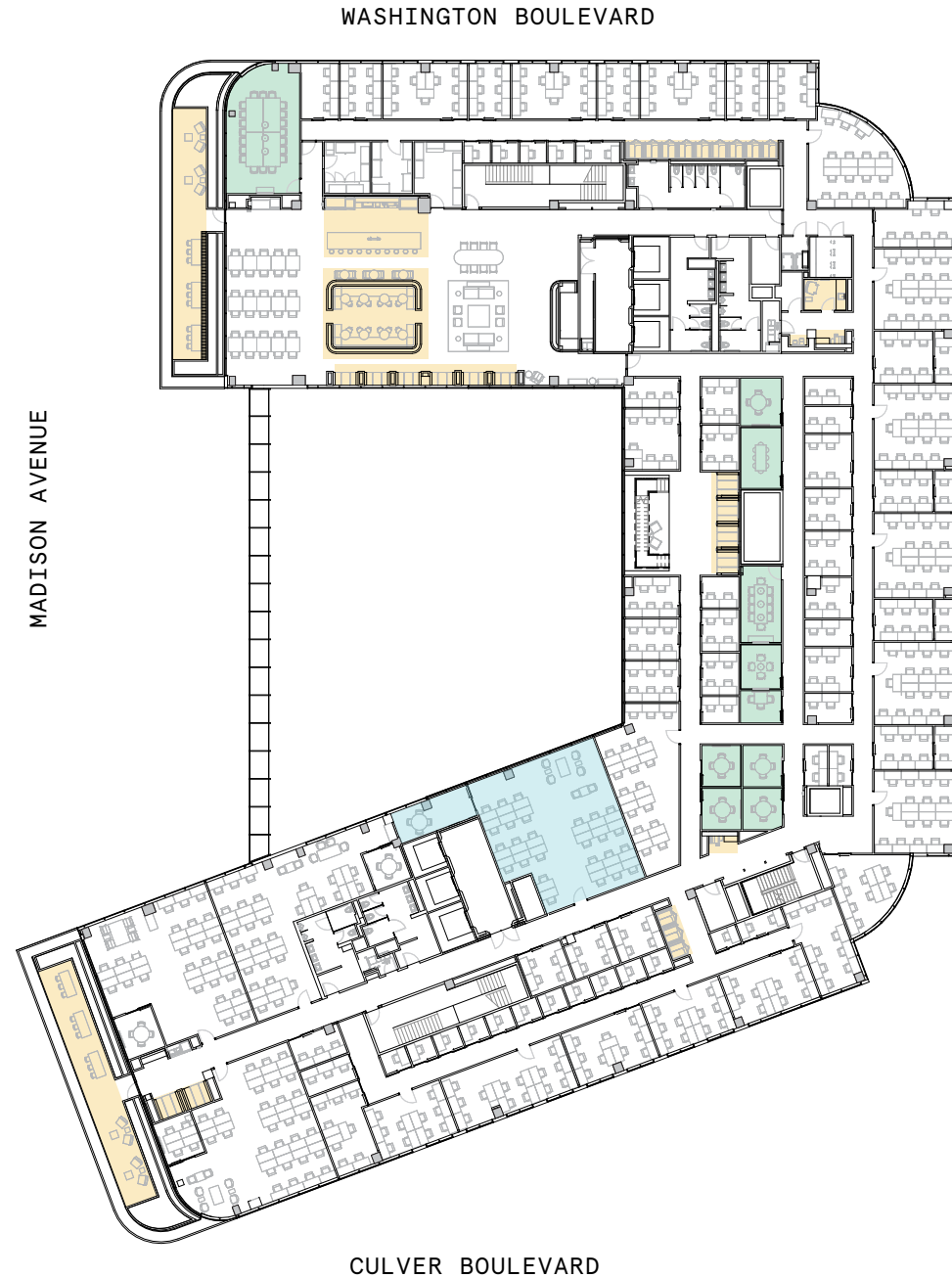


6th Floor

36,165 RSF

2,710 RSF Suite 06-172

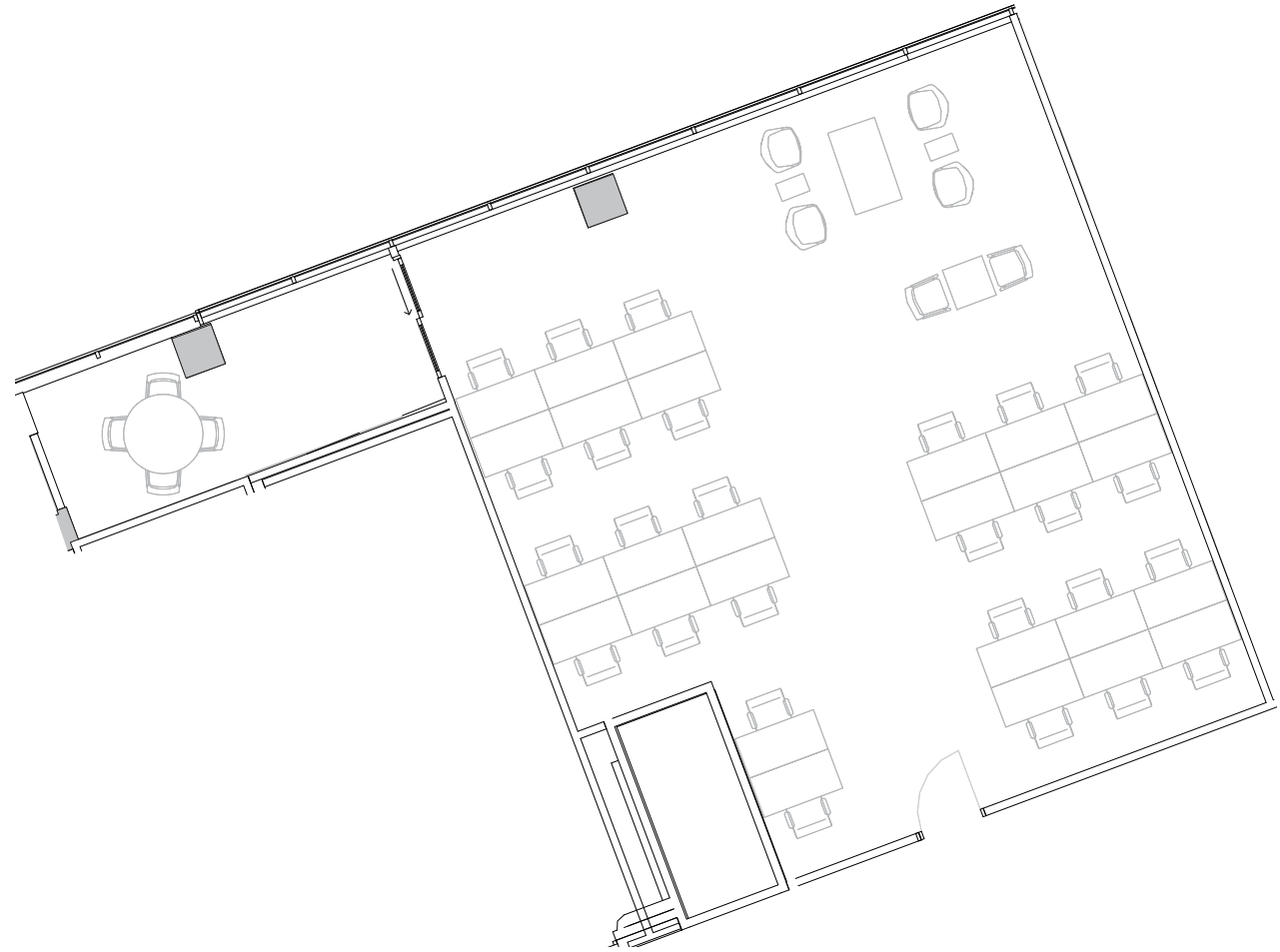
1
MEETING ROOM(S)



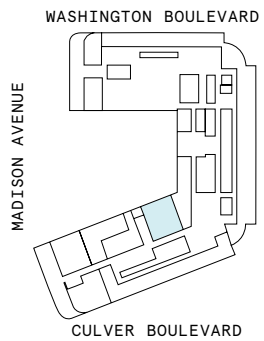
Suite 06-172

6th Floor

1
MEETING ROOM(S)



2,710 RSF
RENTABLE AREA

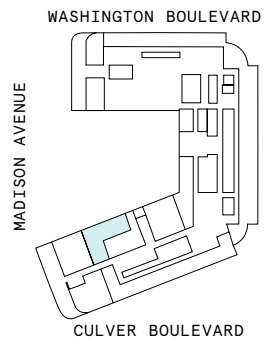
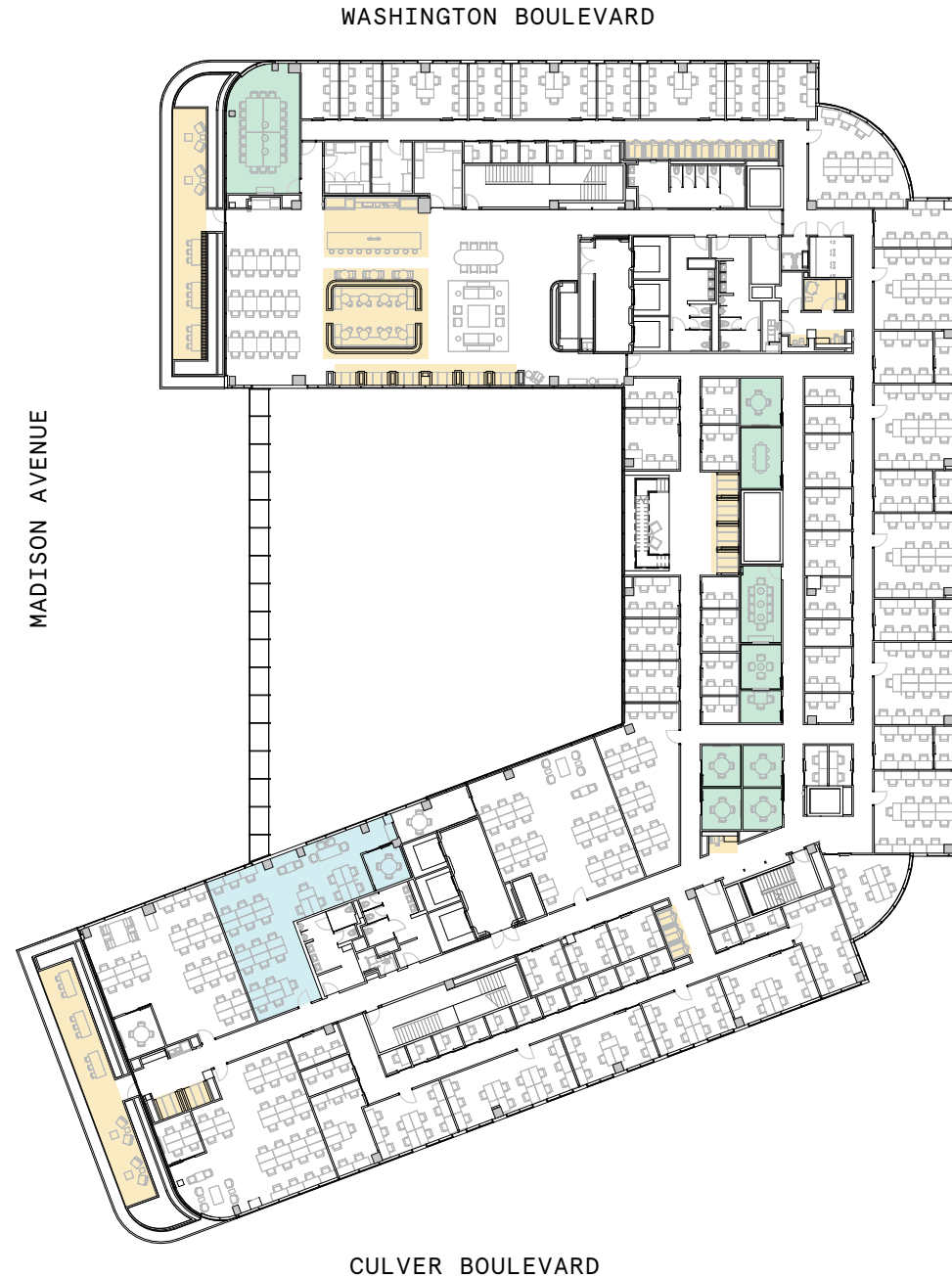


6th Floor

36,165 RSF

2,342 RSF Suite 06-175

1
MEETING ROOM(S)



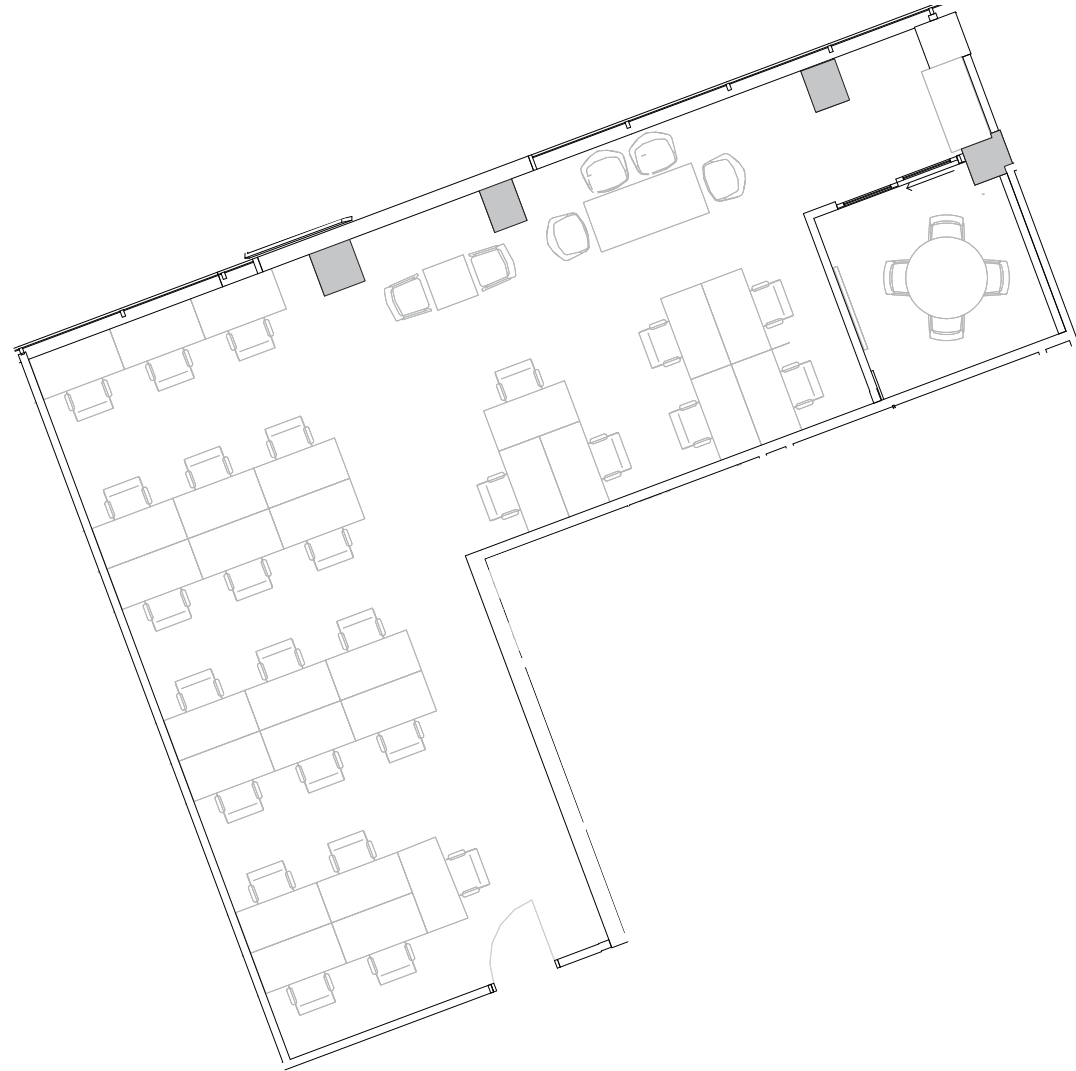
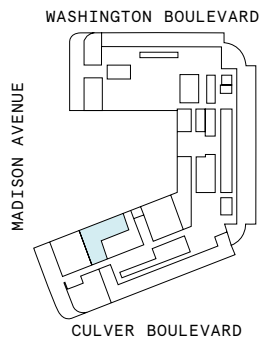
All dimensions are approximate and subject to variances. It is your obligation to independently verify the particulars of the property. WeWork reserves the right to make changes.

Suite 06-175

6th Floor

1
MEETING ROOM(S)

2,342 RSF
RENTABLE AREA

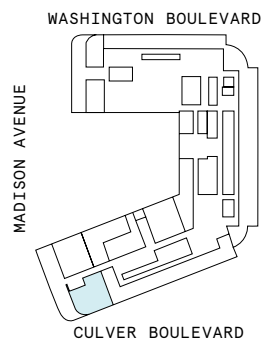
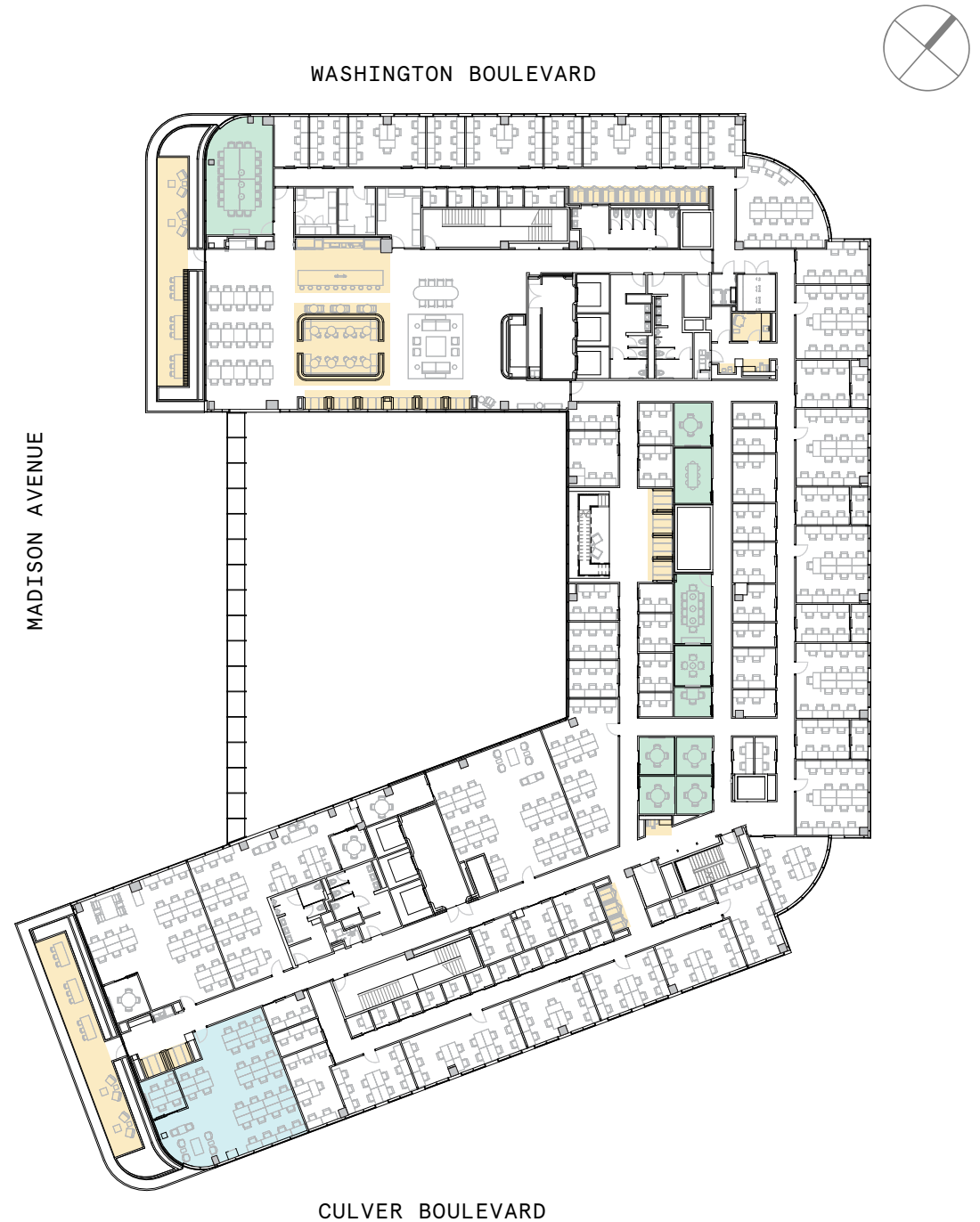


6th Floor

36,165 RSF

2,473 RSF Suite 06-177

1
PRIVATE OFFICE(S)



Suite 06-177

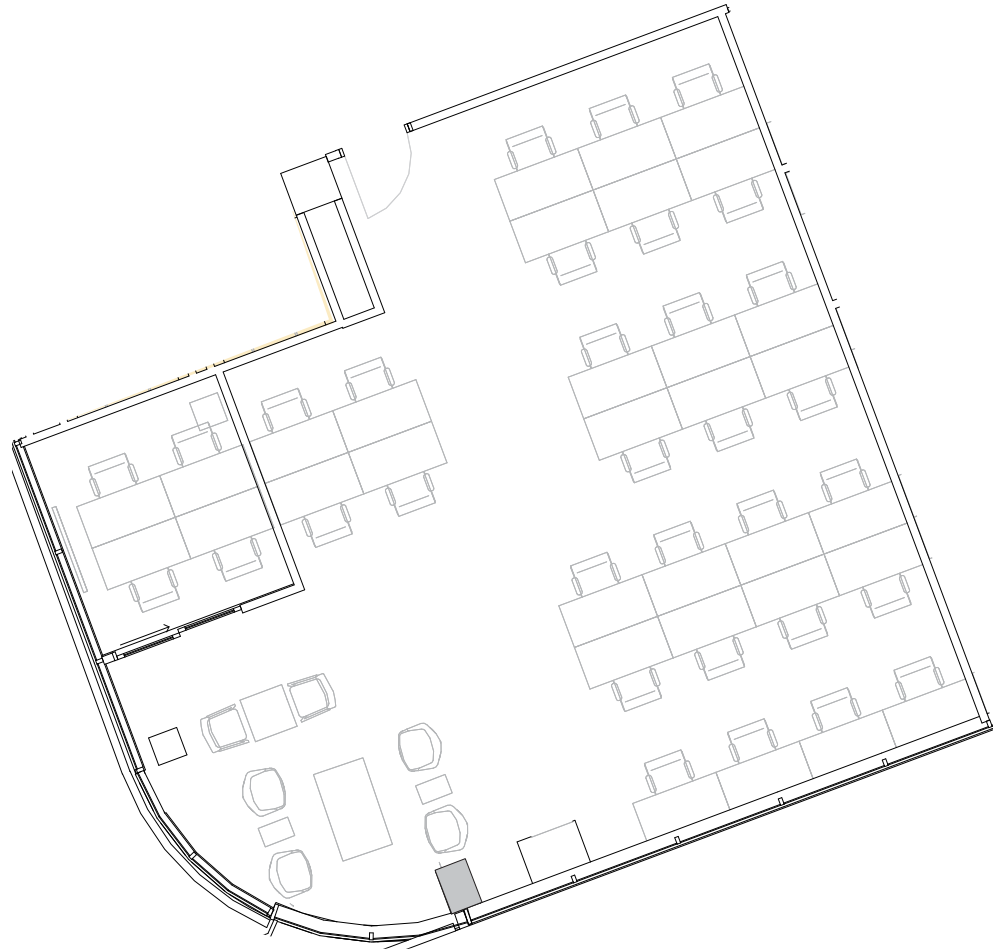
6th Floor

1

PRIVATE OFFICE(S)

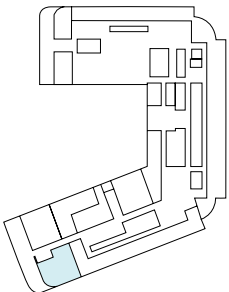
2,473 RSF

RENTABLE AREA



WASHINGTON BOULEVARD

MADISON AVENUE



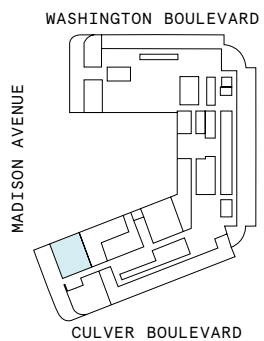
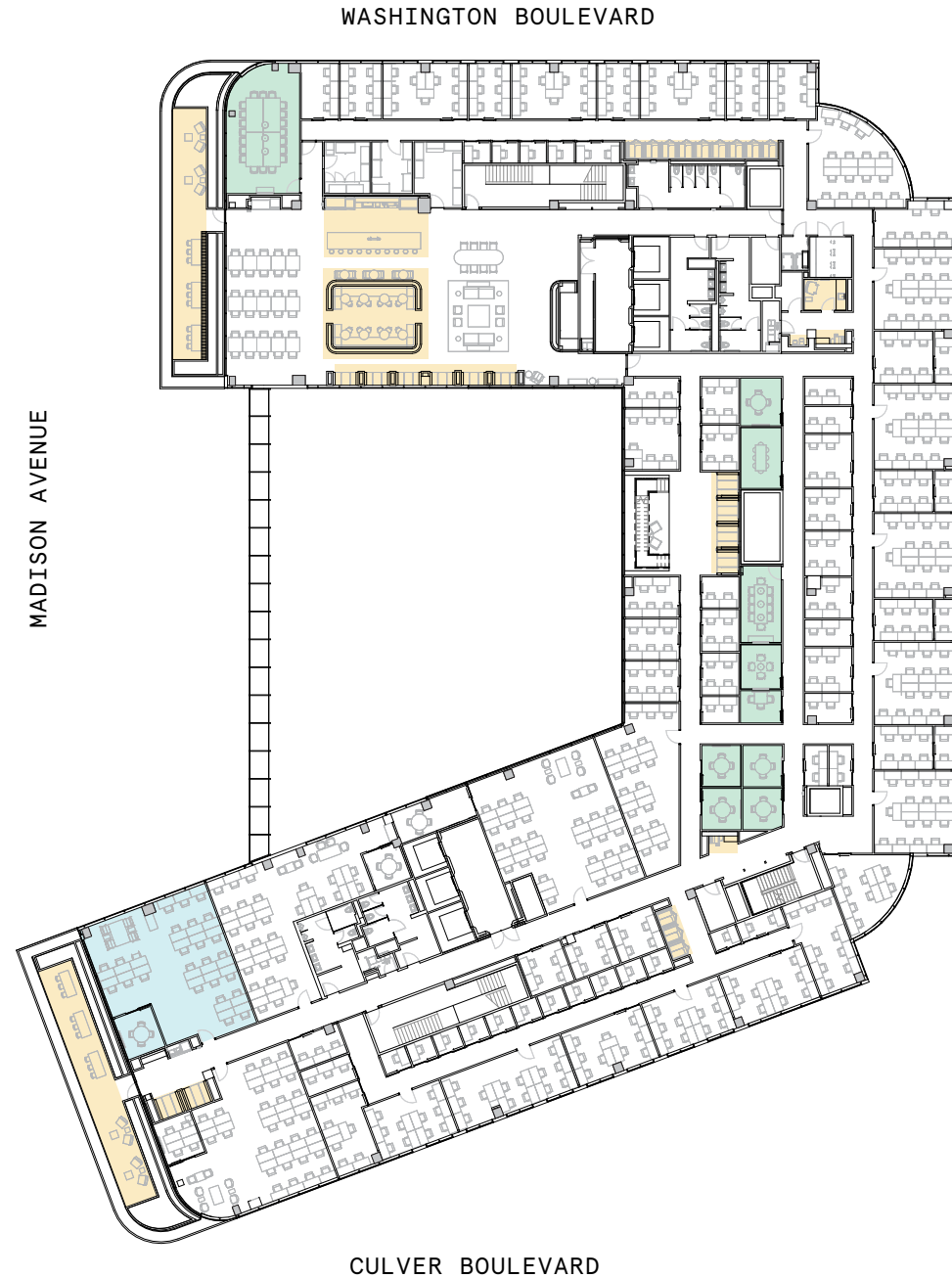
CULVER BOULEVARD

6th Floor

36,165 RSF

2,409 RSF Suite 06-178

1
MEETING ROOM(S)



Suite 06-178

6th Floor

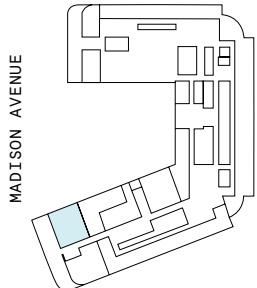
1

MEETING ROOM(S)

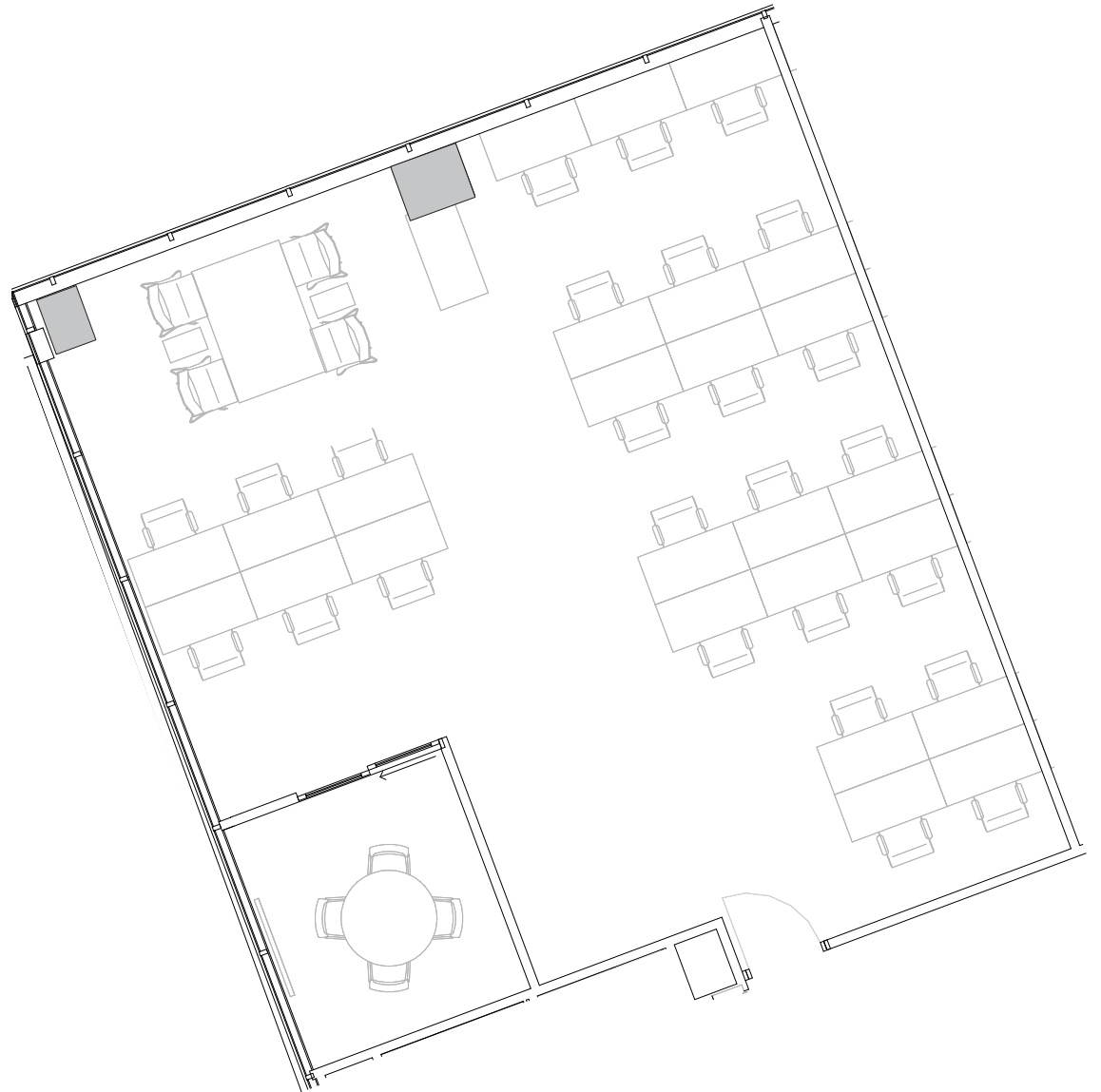
2,409 RSF

RENTABLE AREA

WASHINGTON BOULEVARD



CULVER BOULEVARD



7th Floor

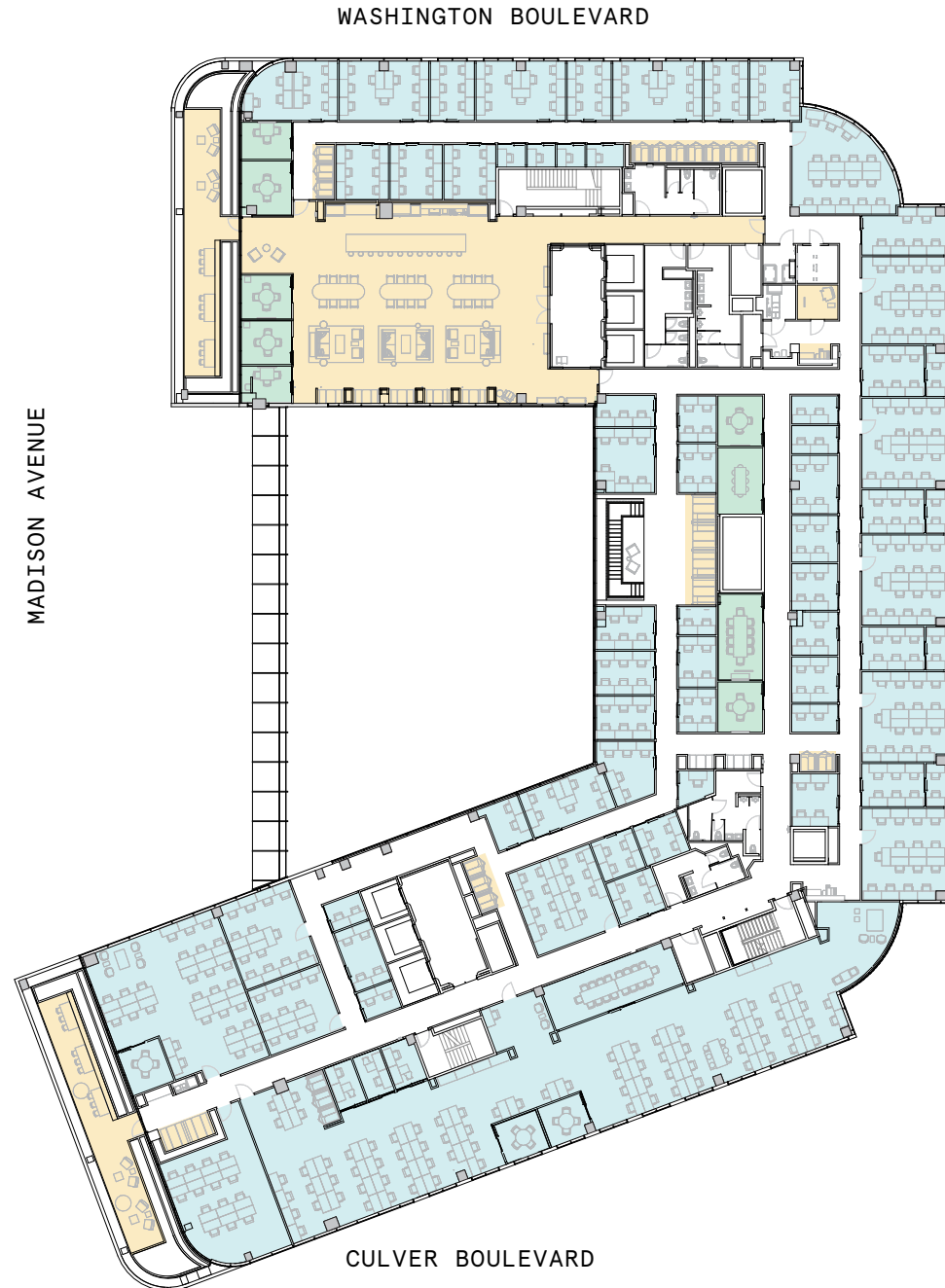
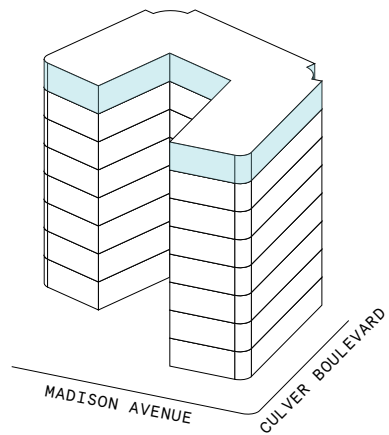
34,056 RSF

9
MEETING ROOM(S)

9
SHARED WORKSPACE(S)

LEGEND

- MEETING ROOM
- SHARED WORKSPACE
- DEDICATED SPACE



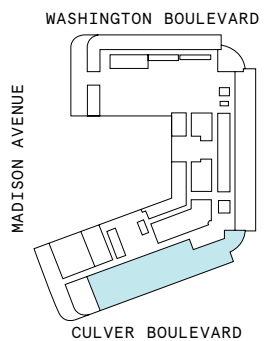
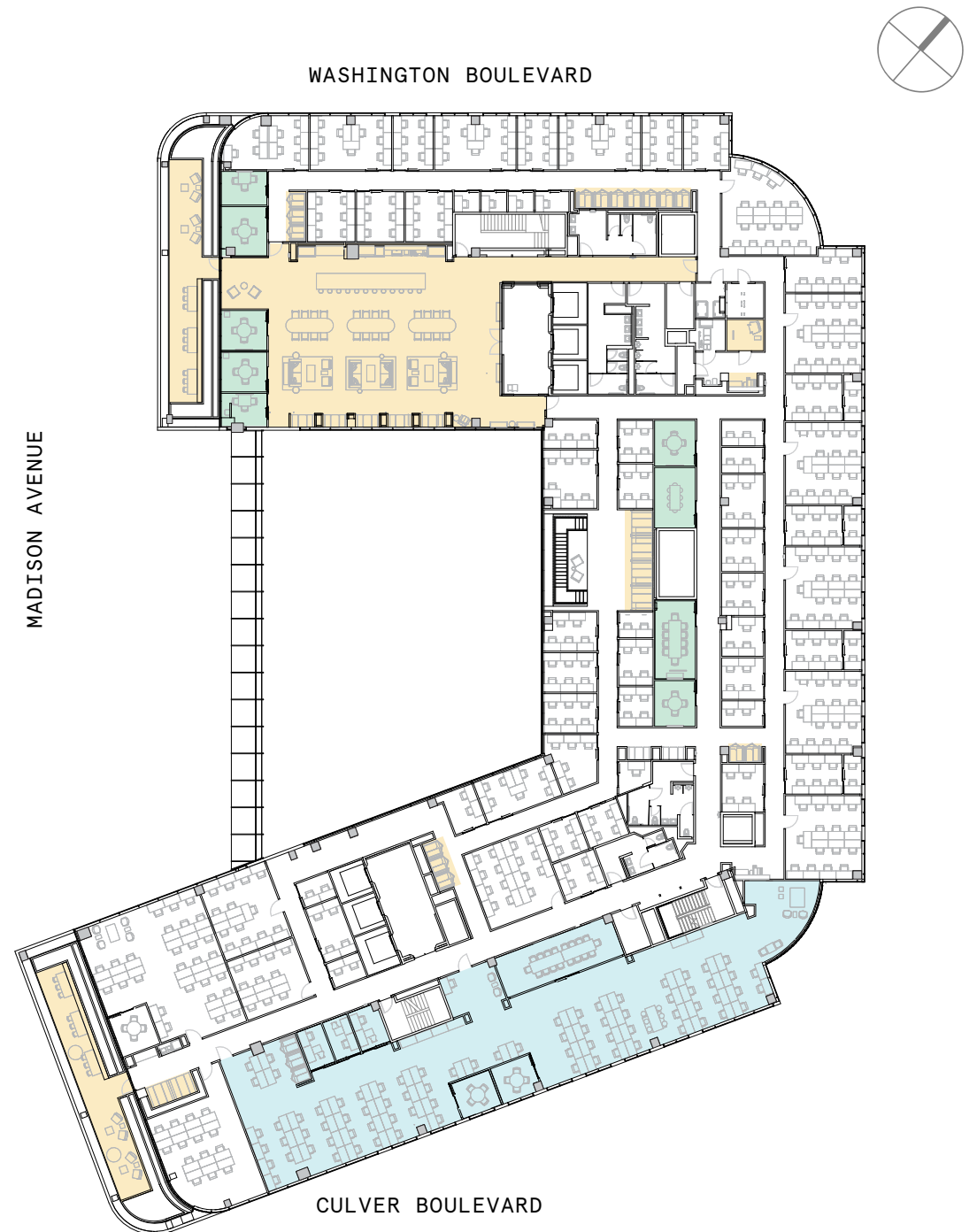
7th Floor

34,056 RSF

9,507 RSF Suite 07-154

3
MEETING ROOM(S)

3
PRIVATE OFFICE(S)



Suite 07-154

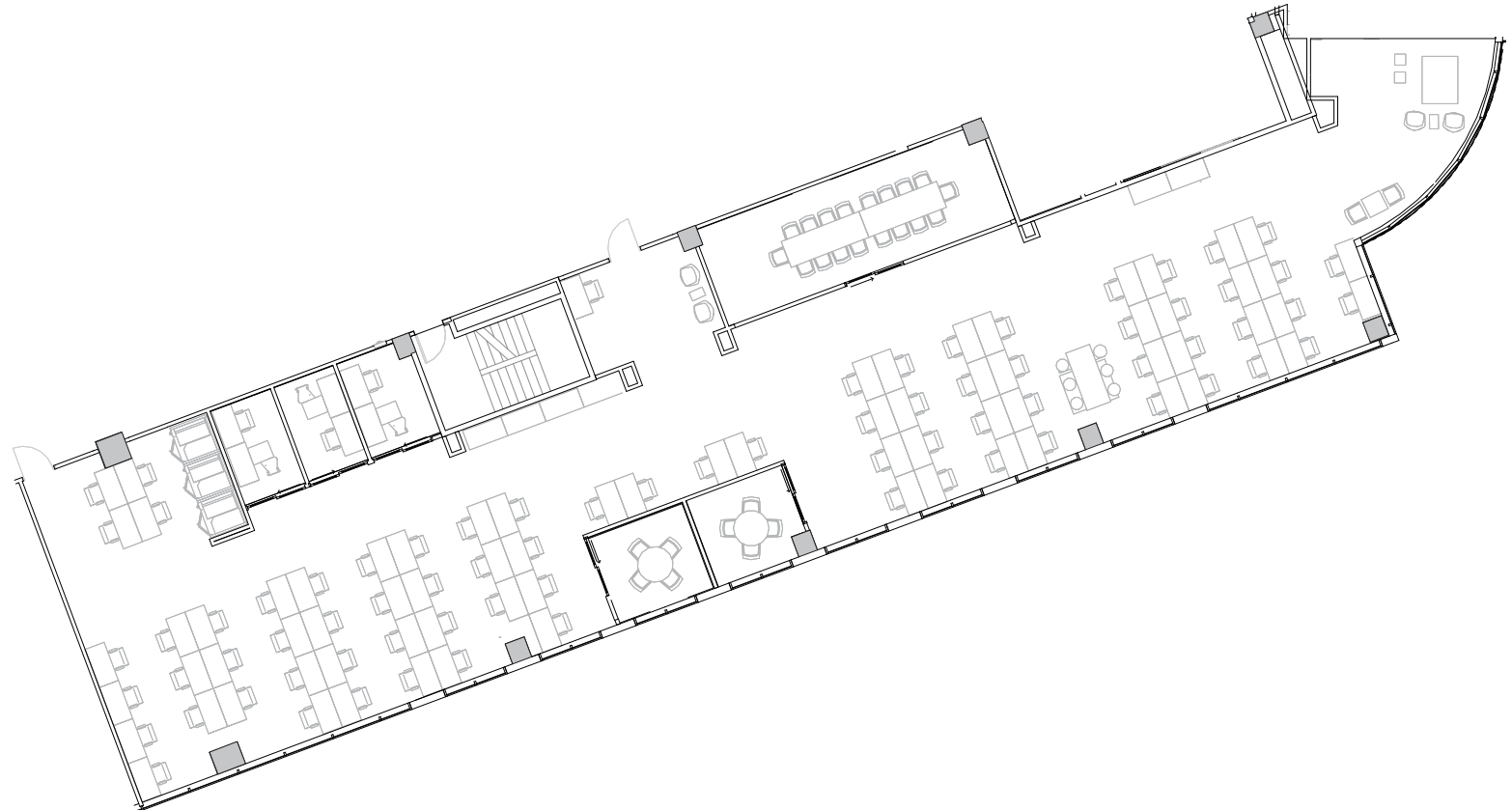
7th Floor

3

MEETING ROOM(S)

3

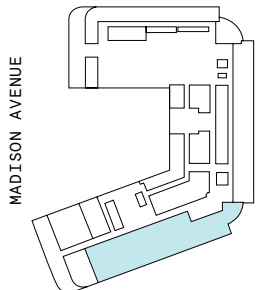
PRIVATE OFFICE(S)



9,507 RSF

RENTABLE AREA

WASHINGTON BOULEVARD



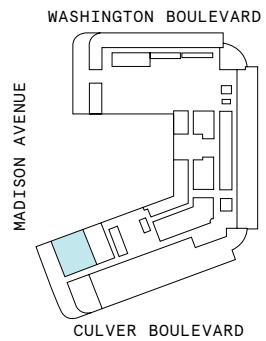
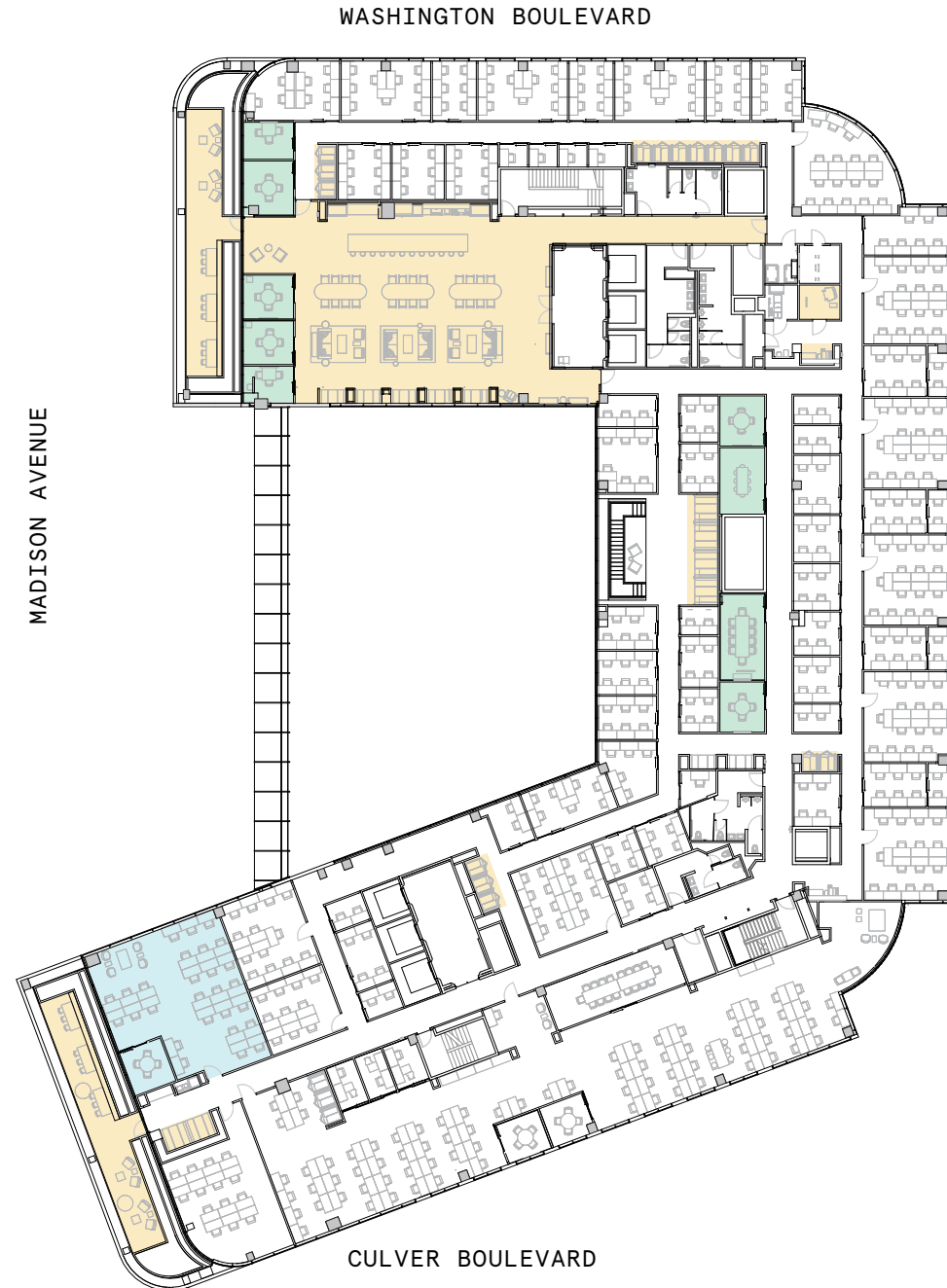
CULVER BOULEVARD

7th Floor

34,056 RSF

2,387 RSF Suite 07-160

1
MEETING ROOM(S)

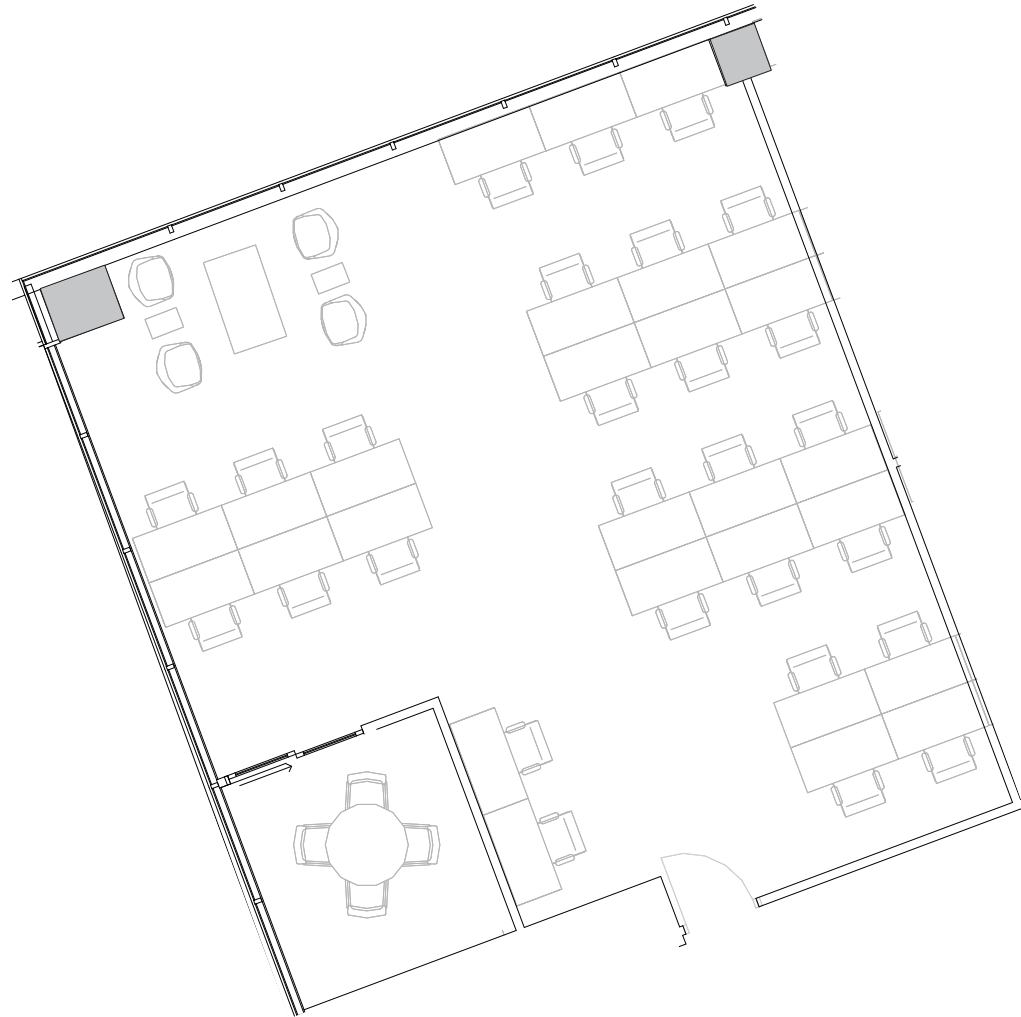
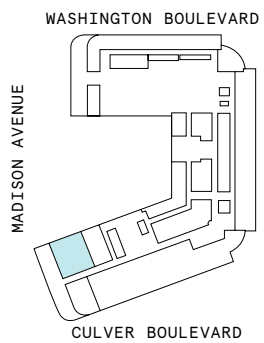


Suite 07-160

7th Floor

1
MEETING ROOM(S)

2,387 RSF
RENTABLE AREA



Contact

For leasing inquiries please reach out to our team.



John Zanetos

EXECUTIVE VICE PRESIDENT
JOHN.ZANETOS@CBRE.COM
213.613.3704



Dan Carr

PORTFOLIO DIRECTOR, SO CAL
DAN.CARR@WEWORK.COM
215.840.7359

Ashley Green

LEASING DIRECTOR
ASHLEY.GREEN@WEWORK.COM
831.331.3103

© 2022 WeWork. The WeWork trademark and related logos are the property of WeWork Companies LLC. Any reference to third-party names are for reference and informational purposes only and should not be considered an endorsement or association of WeWork or vice versa. Photographs contained herein may be representative examples of various WeWork locations and do not necessarily depict the WeWork location referenced. While reasonable efforts have been made to check the accuracy of the information contained here, WeWork, its officers, employees, directors, and representatives, make no warranty, express or implied, regarding the accuracy of the information and disclaim any liability arising from the use of the information contained herein. All dimensions are approximate and subject to variances. It is your obligation to independently verify the particulars of the property. WeWork reserves the right to make changes.