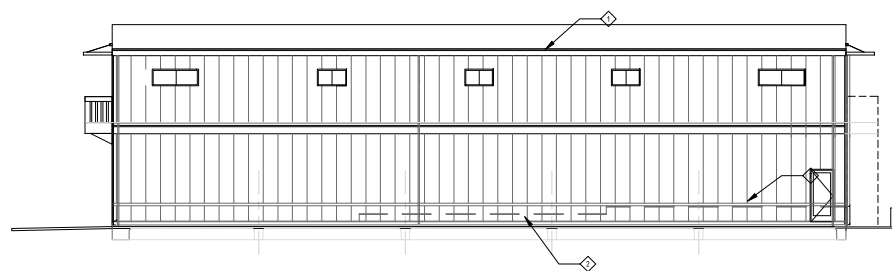
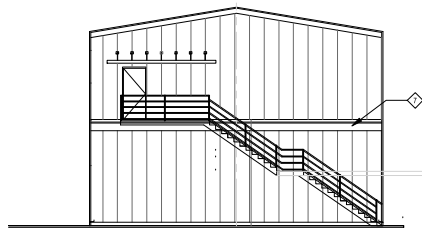


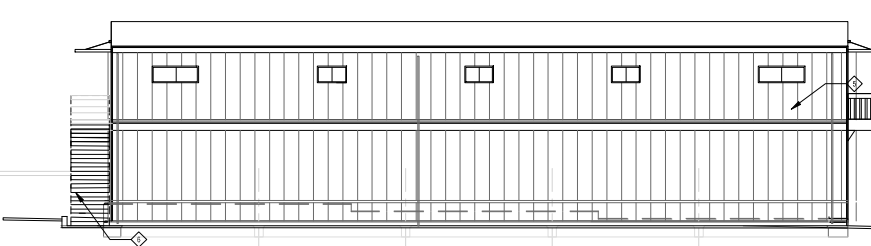
1 FRONT (SOUTH) ELEVATION 1/8" = 1'-0"



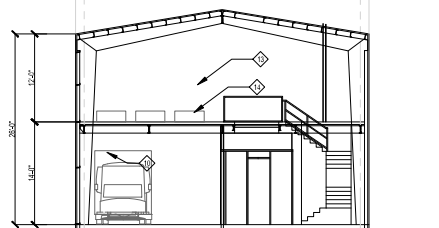
2 RIGHT (EAST) ELEVATION 1/8" = 1'-0"



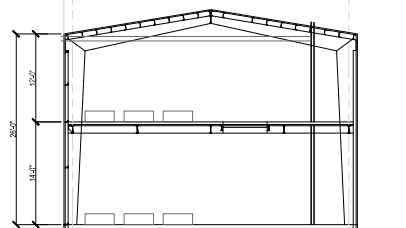
3 REAR (NORTH) ELEVATION 1/8" = 1'-0"



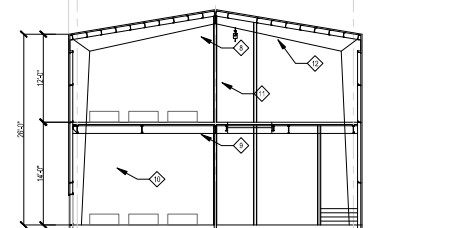
4 LEFT (WEST) ELEVATION 1/8" = 1'-0"



A SECTION AT LOBBY 1/8" = 1'-0"



B TYPICAL SECTION 1/8" = 1'-0"



C SECTION AT REAR STAIR 1/8" = 1'-0"

## SHEET NOTES

- ◇ FLAT SANDWICH INSULATED METAL ROOF PANELS.
- ◇ FLAT SANDWICH INSULATED METAL WALL PANELS.
- ◇ 10'-0" X 10'-0" ROLL-UP DOOR WITH WINDOWS.
- ◇ STOREFRONT WINDOW AND DOOR FRAMES.
- ◇ CABLE RAIL BALCONY RAILING +42" HIGH.
- ◇ 3'-0" X 7'-0" PERSONNEL DOOR.
- ◇ SKEWED WALL - SEE PLAN.
- ◇ 1.5 TON MONORAIL DOWN CENTERLINE OF HALL WAY.
- ◇ SECOND FLOOR STEEL JOISTS AND BEAMS WITH METAL DECK AND 4" CONCRETE SLAB FLOOR.
- ◇ STEEL PAN STAIRS WITH 1-1/2" DIA. METAL HANDRAIL +34".
- ◇ 4" METAL STUD WALLS WITH 5/8" GYP. BD. EA. SIDE.
- ◇ STEEL FRAME TO SUPPORT BLDG. STRUCTURE, FIRE SPRINKLERS, AND DUCTWORK.
- ◇ REMOVABLE METAL RAILING.
- ◇ ACCESS DOOR IN FLOOR - SEE PLAN.



CONSULTANT:

**BUDDHA BUILDING**  
OFFICE FACILITY  
5212 EAST 10TH STREET, OAKLAND, CA  
NCR CONSTRUCTION INC., BLDG. OWNER



REVISIONS DATE

JOB:

DATE: 5/7/2019

SHEET TITLE:  
**EXTERIOR  
ELEVATIONS  
& BUILDING  
SECTIONS**

SHEET NO.

**A2.1**

REVISION NO. 2