

FOR LEASE

CREATIVE / MODERN OFFICE SPACE

1207 Washington St. | Vancouver, WA 98660



900 Washington St, Suite 850, Vancouver, WA
360.597.0574 | www.fg-cre.com

Suite 225
1,111 SF

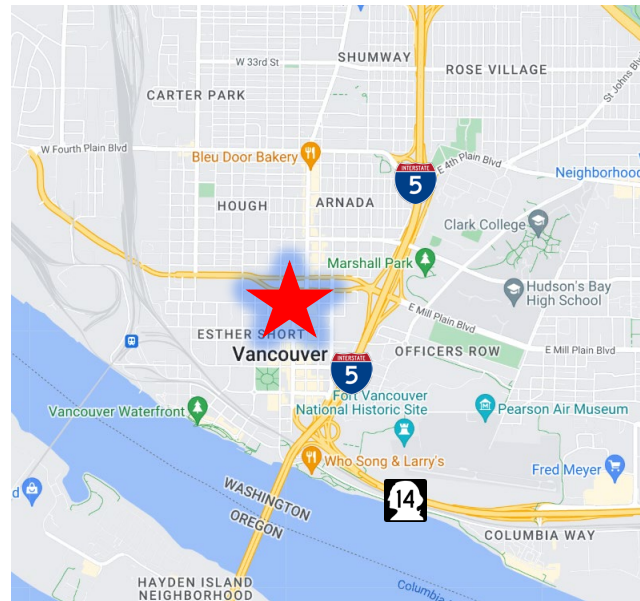
Suite 215
4,465 SF



PROPERTY HIGHLIGHTS

Creative and modern office environment featuring five private offices, a conference room, an open kitchen with a bar, and a spacious collaborative area—all highlighted by lofty ceilings and abundant natural light.

- Common conference room
- Available:
 - Suite 215 – 4,465 SF
 - Suite 225 – 1,111 SF
- Rate: \$30.00/SF full-service gross
- Conveniently located in the heart of downtown—surrounded by shops and dining options- just 15 minutes from downtown Portland.



FOR MORE INFORMATION:

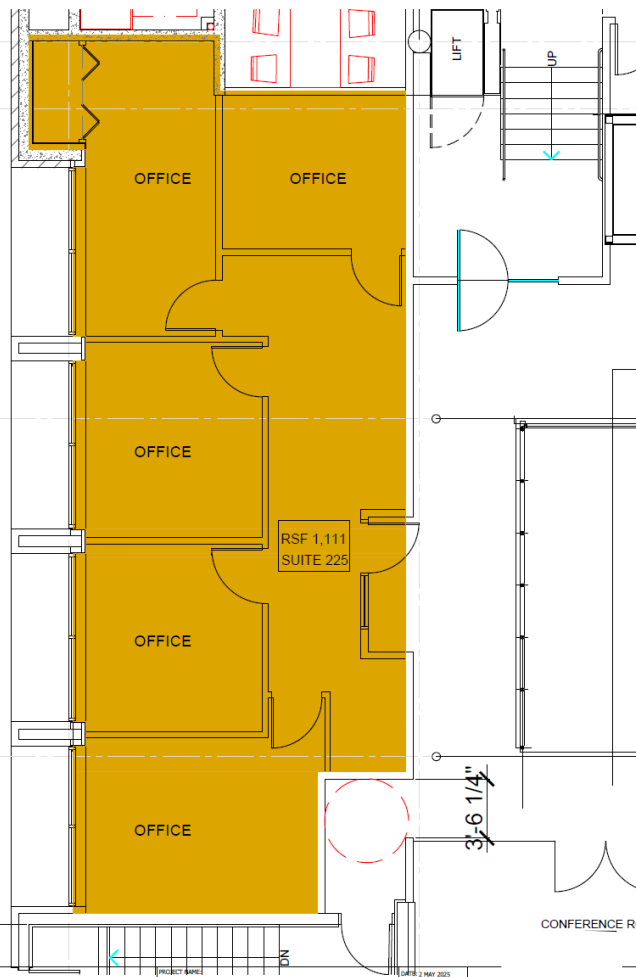
KC Fuller | 360.597.0569
kfuller@fg-cre.com

Eric Fuller, CCIM | 360.597.0564
efuller@fg-cre.com

1207 Washington St. | Vancouver, WA 98660



Suite 225 - 1,111 SF



	1 Mile	3 Mile	5 Mile
Est. Population	11,543	70,167	230,870
2029 Projected Population	12,759	75,321	240,966
Est. Average Household Income	\$84,567	\$83,772	\$94,655
Est. Total Businesses	2,396	5,088	13,182
Est. Total Employees	17,842	43,344	113,489

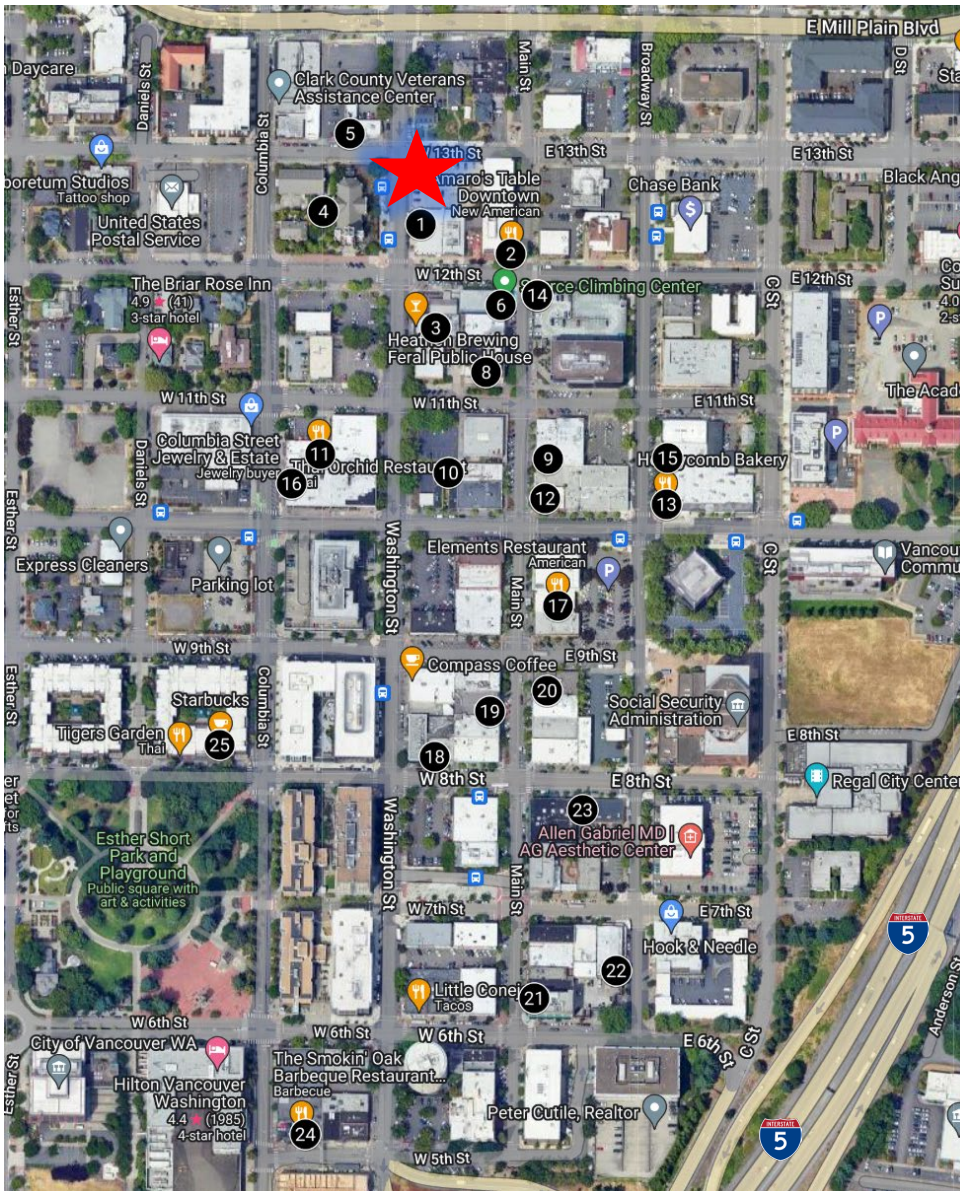
FOR LEASE

CREATIVE / MODERN OFFICE SPACE

1207 Washington St. | Vancouver, WA 98660



900 Washington St, Suite 850, Vancouver, WA
360.597.0574 | www.fg-cre.com



- 1 1207 Washington St
- 2 Amaro's Table Downtown
- 3 Heathen Brewing Feral Public House
- 4 Proto-Cathedral of St. James the Greater
- 5 Tap Union Freehouse
- 6 Source Climbing Center
- 7 Weiner Wagon
- 8 Syrup Trap
- 9 Kiggins Theatre
- 10 Brothers Cascadia Brewing Evergreen Pub
- 11 Thai Orchid Restaurant
- 12 Short & Sweet
- 13 Honeycomb Bakery
- 14 Weiner Wagon
- 15 Northwest Personal Training
- 16 DEDIKO
- 17 Elements Restaurant
- 18 Mighty Bowl - Downtown
- 19 SOFTEA
- 20 Joe Brown's Cafe
- 21 Brewed Cafe & Pub
- 22 Georgie's Garage & Grill
- 23 City Sandwich Co
- 24 The Smokin' Oak Barbeque Restaurant, Bar
- 25 Starbucks

FOR MORE INFORMATION:

KC Fuller | 360.597.0569 | kfuller@fg-cre.com

Eric Fuller, CCIM | 360.597.0564 | efuller@fg-cre.com