

**FOR SALE**

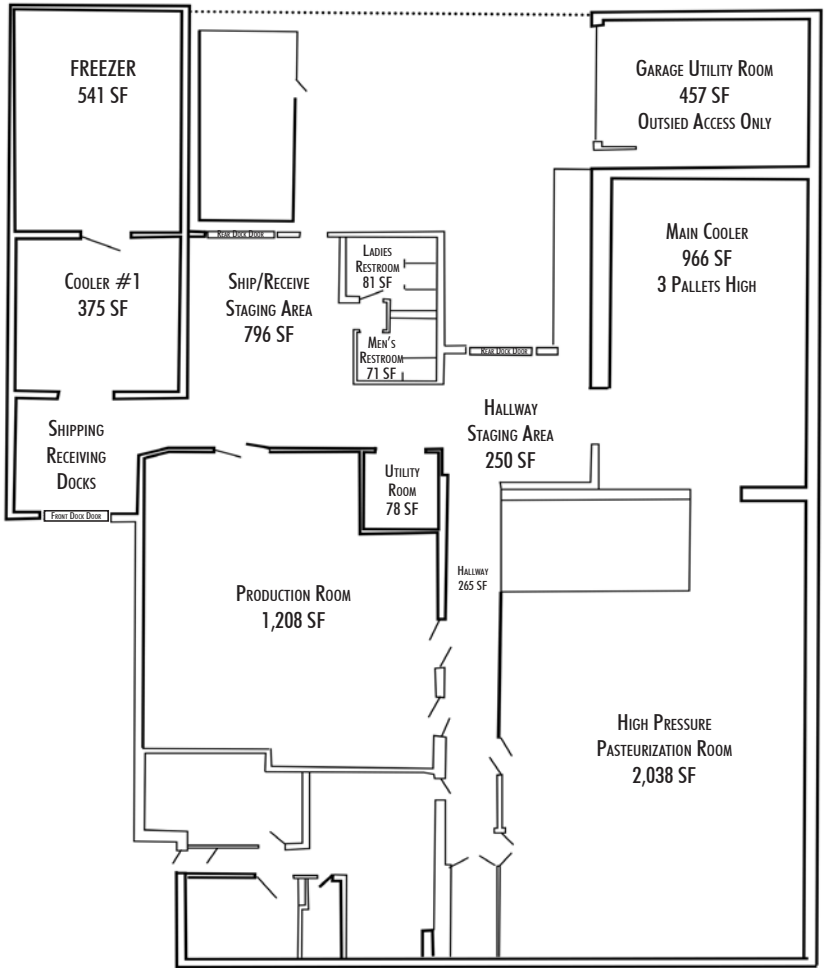


# REFRIGERATED PRODUCTION PLANT

6851 W. IRVING PARK RD, CHICAGO, IL

**CBRE**

# FLOORPLAN



# FACILITY OVERVIEW

Building Size:	9,000 SF
Use:	Refrigerated and Frozen Food Production
Loading:	1 Exterior- with temperature controlled staging area
Ceiling Height:	15' - 18'2"
Production Room:	2,038 SF
Production Room:	1,208 SF (15' ceiling height)
Main Cooler:	966 SF (18'2" ceiling height)
Cooler #1:	373 SF
Freezer:	541 SF

## PRODUCTION INFRASTRUCTURE/FINISHES:

- Epoxy seal, sloped and stainless steel floor drains
- Fiberglass-reinforced walls and ceiling panels
- USDA, HACCP, and GMP compliant



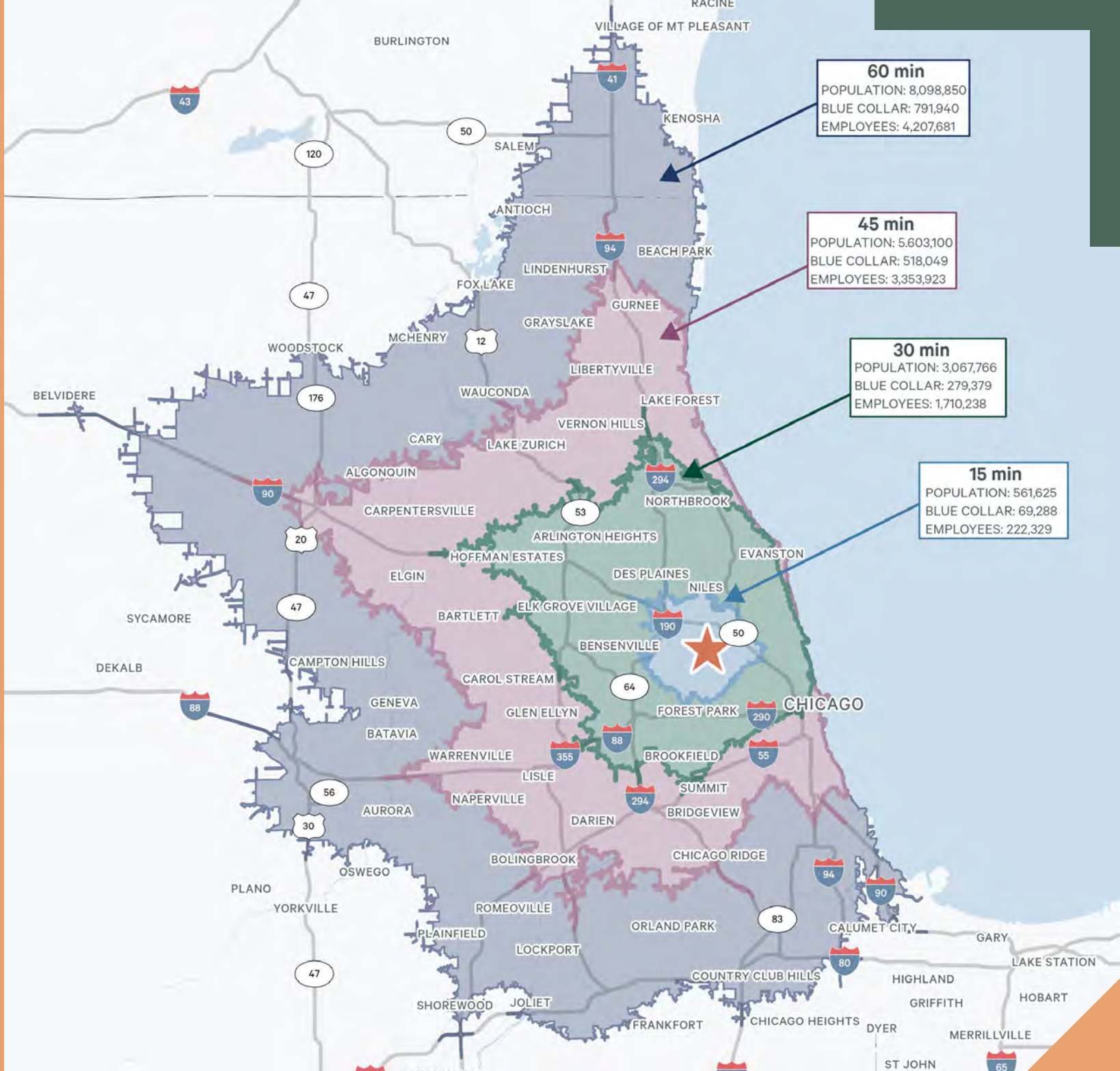


# DRIVE TIMES

## PREP AREA

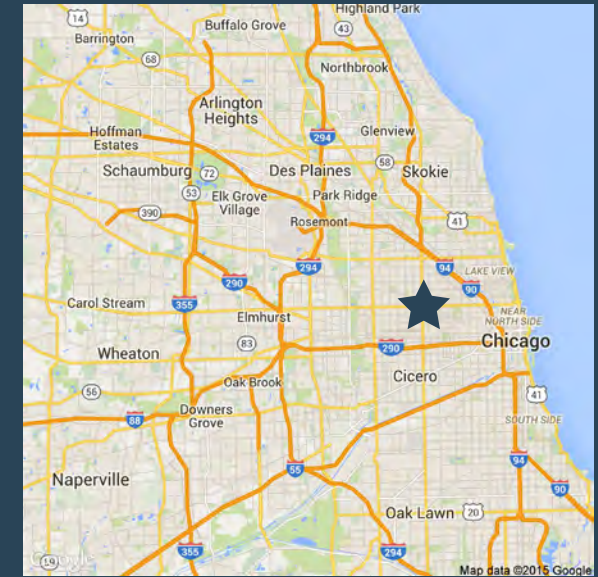


## PRODUCTION AREA





# HIGHWAY ACCESS



## CONTACT US

### JASON LEV

Executive Vice President  
+1 847 706 4044  
jason.lev@cbre.com

### JOHN SUERTH, SIOR

Executive Vice President  
+1 847 706 4929  
john.suerth@cbre.com

### JIMMY KOWALCZYK

First Vice President  
+1 630 368 5548  
jimmy.kowalczyk@cbre.com