

LEGEND

- RBF REBAR FOUND
- CRS CAPPED REBAR SET
- OTP OPEN TOP PIPE
- CTP CRIMP TOP PIPE
- X- FENCE
- R/W RIGHT OF WAY
- B.L. BUILDING LINE
- P PORCH
- WM WATER METER
- LP LIGHT POLE
- HT HOT TUB
- T-PED PHONE BOX
- CATV CABLE TV

ARC=77.36'
 CH=77.25'
 N 85°40'27" E
 RAD=410.00'

50703

NOTE:
 FENCES SHOULD NOT BE PLACED
 USING SIDE DIMENSIONS FROM
 HOUSE OR STRUCTURE.

THE PUBLIC RECORDS REFERENCED
 HEREON REFLECT ONLY THOSE RECORDS
 NECESSARY TO ESTABLISH THE
 BOUNDARIES SHOWN HEREON, AND
 REFERENCE TO THE SAME DOES NOT
 AND IS NOT INTENDED TO CONSTITUTE A
 TITLE SEARCH OR OPINION. EASEMENTS
 OR ENCUMBRANCES MAY EXIST ON
 PUBLIC RECORD AND NOT BE SHOWN
 HEREON.

THIS PLAT HAS BEEN CALCULATED FOR
 CLOSURE BY LATITUDES AND
 DEPARTURES AND IS FOUND ACCURATE
 TO WITHIN ONE FOOT IN 112,980 FEET.

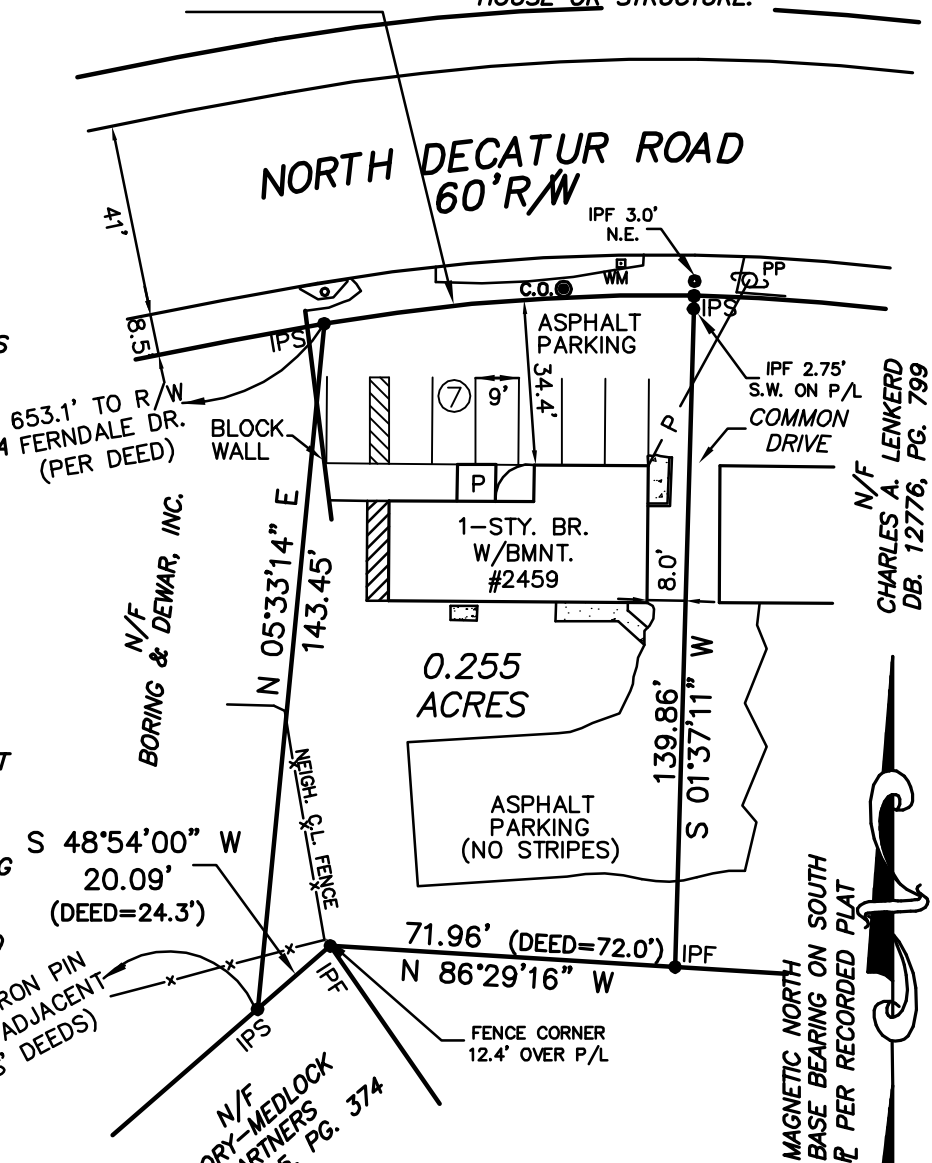
THE FIELD DATA UPON WHICH THIS PLAT
 IS BASED HAS A CLOSURE PRECISION
 OF ONE FOOT IN 10,000± FEET AND
 AN ANGULAR ERROR OF 02" PER
 ANGLE POINT AND WAS ADJUSTED USING
 LEAST SQUARES.

A TOPCON - TOTAL STATION WAS USED
 TO OBTAIN THE LINEAR AND ANGULAR
 MEASUREMENTS USED IN THE
 PREPARATION OF THIS PLAT.

CERTIFICATION IS MADE TO PERSON(S) NAMED
 ON THIS SURVEY AND IS NOT TRANSFERABLE TO
 OTHERS.

SURVEY FOR:

KRISTY MCKINLEY
 LAND LOT 50 18th DISTRICT
 DEKALB COUNTY, GEORGIA
 SCALE: 1"=40' APRIL 23, 2012
 REC. IN PLAT BOOK 19, PG. 21



IN MY OPINION, THIS PLAT IS A CORRECT
 REPRESENTATION OF THE LAND PLATTED AND HAS
 BEEN PREPARED IN CONFORMITY WITH THE MINIMUM
 STANDARDS AND REQUIREMENTS OF LAW.



SCI Development Services

ENGINEERS - SURVEYORS - LAND PLANNERS
 3655 HEWATT COURT-STE E-SNELLVILLE GEORGIA 30039
 (770) 736-7666 FAX (770) 736-4623
 MAIL@SURVEYCONCEPTS.NET