

LAKE MEAD COMMERCIAL CENTER

1180 E SUNSET RD | HENDERSON, NV 89011



CLASS A OFFICE WITHIN CADENCE MASTER-PLANNED COMMUNITY
OWNER-USER with income · INVESTOR · OFFICE CONDOS

KAYLEE BORAM CHO, CCIM
NV Lic.# BS.0144592
Kaylee@KayleeLasVegasRealty.com
702.728.1932

RENA AREE
NV Lic.# S.0197997
RenaAree@gmail.com
702.530.8383



Keller Williams
COMMERCIAL
LAS VEGAS



EXECUTIVE SUMMARY

KW Commercial presents a rare opportunity to own and/or occupy a new Class A office building with income from a national medical tenant in Henderson's Cadence Master-Planned Community.

Located at the entrance of Cadence—ranked the **#3 top-selling master-planned community in the U.S. (2024, RCLCO)**—the project benefits from 12,500 homes planned/built by 9+ homebuilders, plus proximity to Lake Las Vegas, Tuscany, and a new 3,000+ home master plan.

Project Highlights:

- **Under Contract:** ±7,109 SF preschool (opening Fall 2025, up to 170 students).
- **For Sale:** 11,573 SF two-story office (shell delivery Q3 2025), available as a whole or subdivided into office condos.

Ownership Options: Owner-user with income, investment property, lease-to-own, or office condos. The building is also available for lease, with strong demand for healthcare users.

Community Amenities: Cadence Central Park, Valley Health ER, Cadence Village Center Phase I (Smith's Marketplace, Wells Fargo, Starbucks, UPS, Café Rio) and Phase II under construction (EOS Fitness, Dutch Bros, PT's, Salad & Go), near Henderson City Hall.

[ARTICLE: The Top-Selling Master-Planned Communities of 2024](#)

HIGHLIGHTS - MEDICAL/PROFESSIONAL OFFICE

GENERAL AREA Cadence Master-Planned Community

ADDRESS 1180 E Sunset Rd
Henderson, NV 89011

APN Portion of 179-05-422-014

ZONING Planned Community (PC)

BUILT YEAR 2025

BUILDING SIZE 12,061 SF (11,573 USF)

BUILDING PRICE **\$5,494,050**

OFFICE CONDO HVAC units included in shell price

(Can be subdivided into
condos)

Leased	1,908 sf	6% cap	\$1,240,200
Grey Shell	1st Floor		\$450.00/sf
Grey Shell	2nd Floor		\$425.00/sf

PARKING Cross access easement throughout Lake Mead Commercial Center

STORIES 2

TYPE

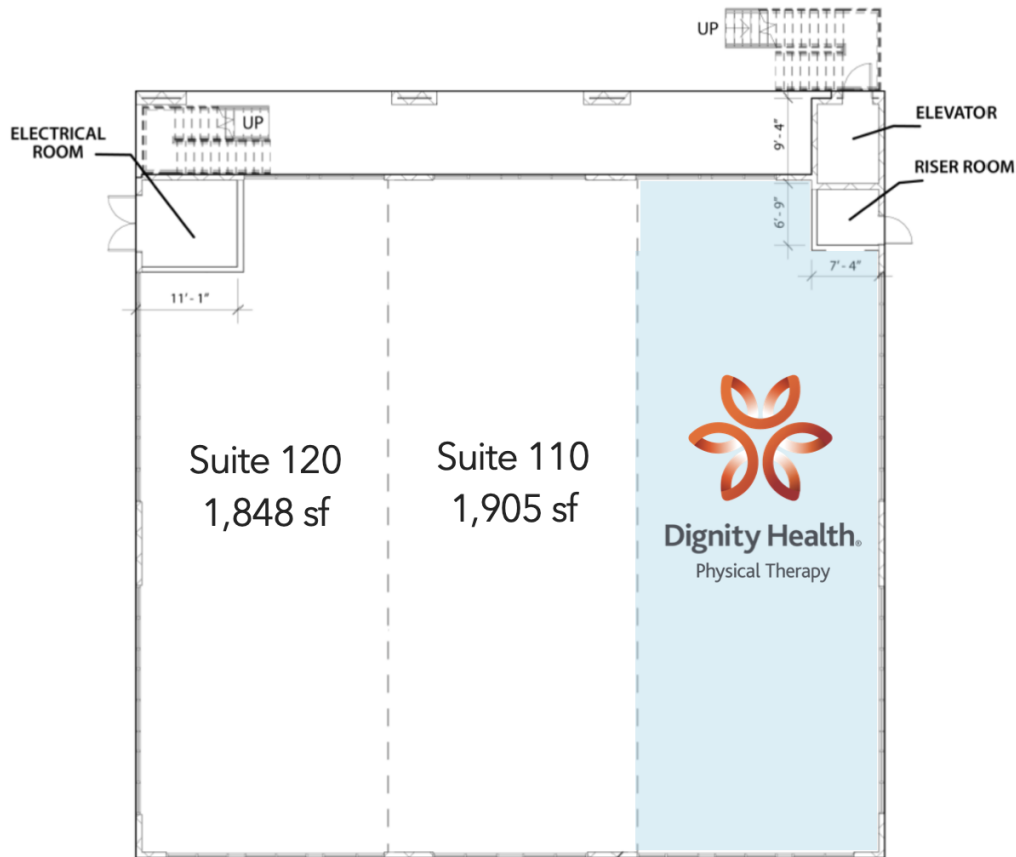
- Owner-User / Owner-User with Income
- Investment

SALE OPTIONS

- Grey shell office building with income
- Grey shell/Investment office condos

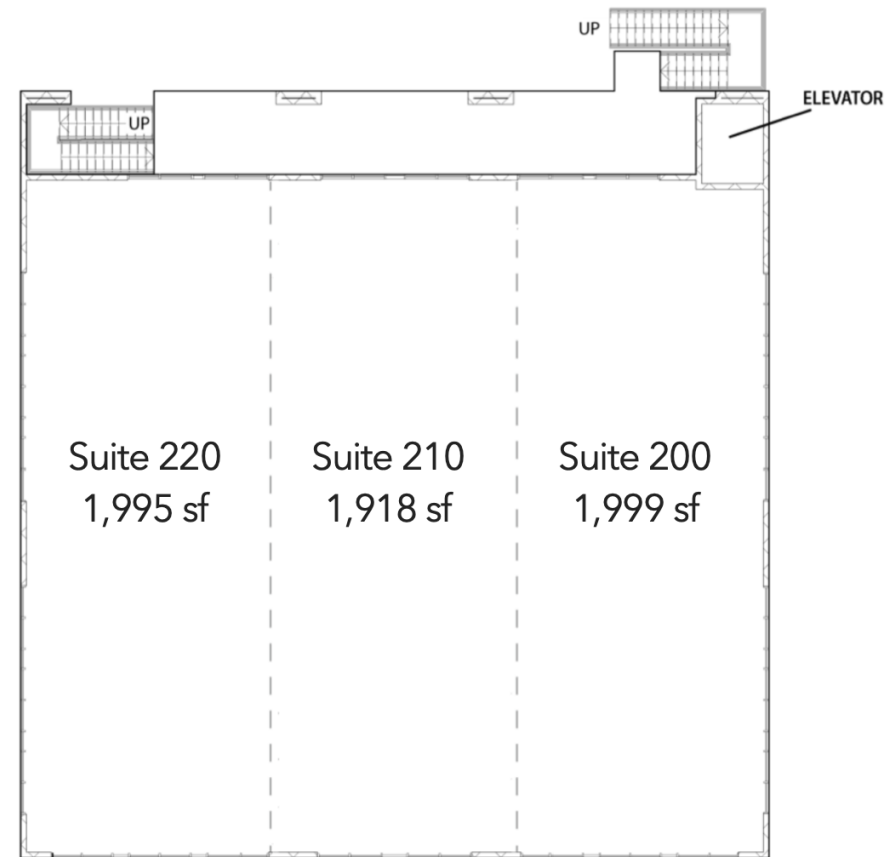
MEDICAL/PROFESSIONAL OFFICE

OFFICE FLOOR PLAN & SIZE



FIRST FLOOR

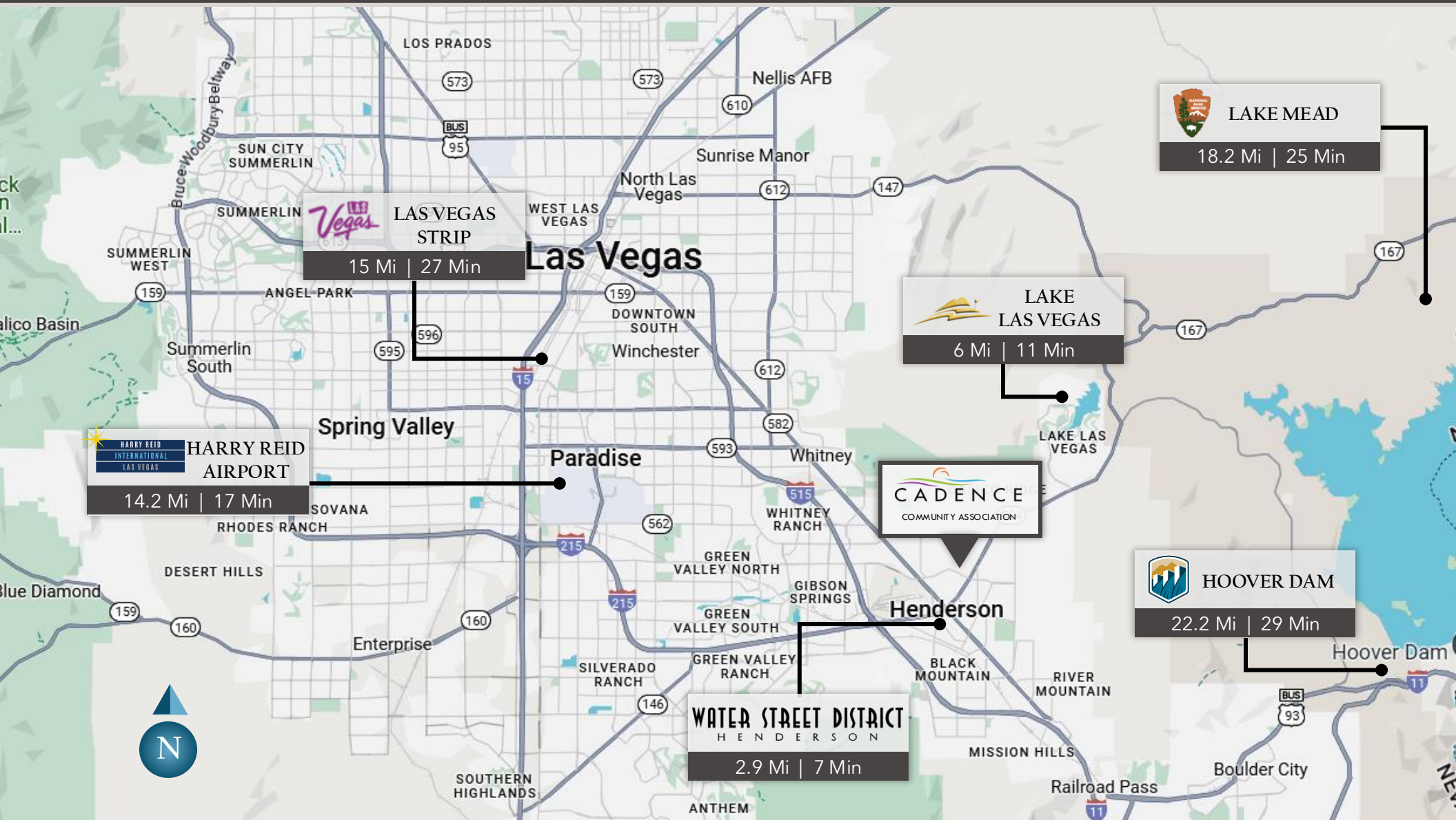
AVAILABLE SF: 3,753



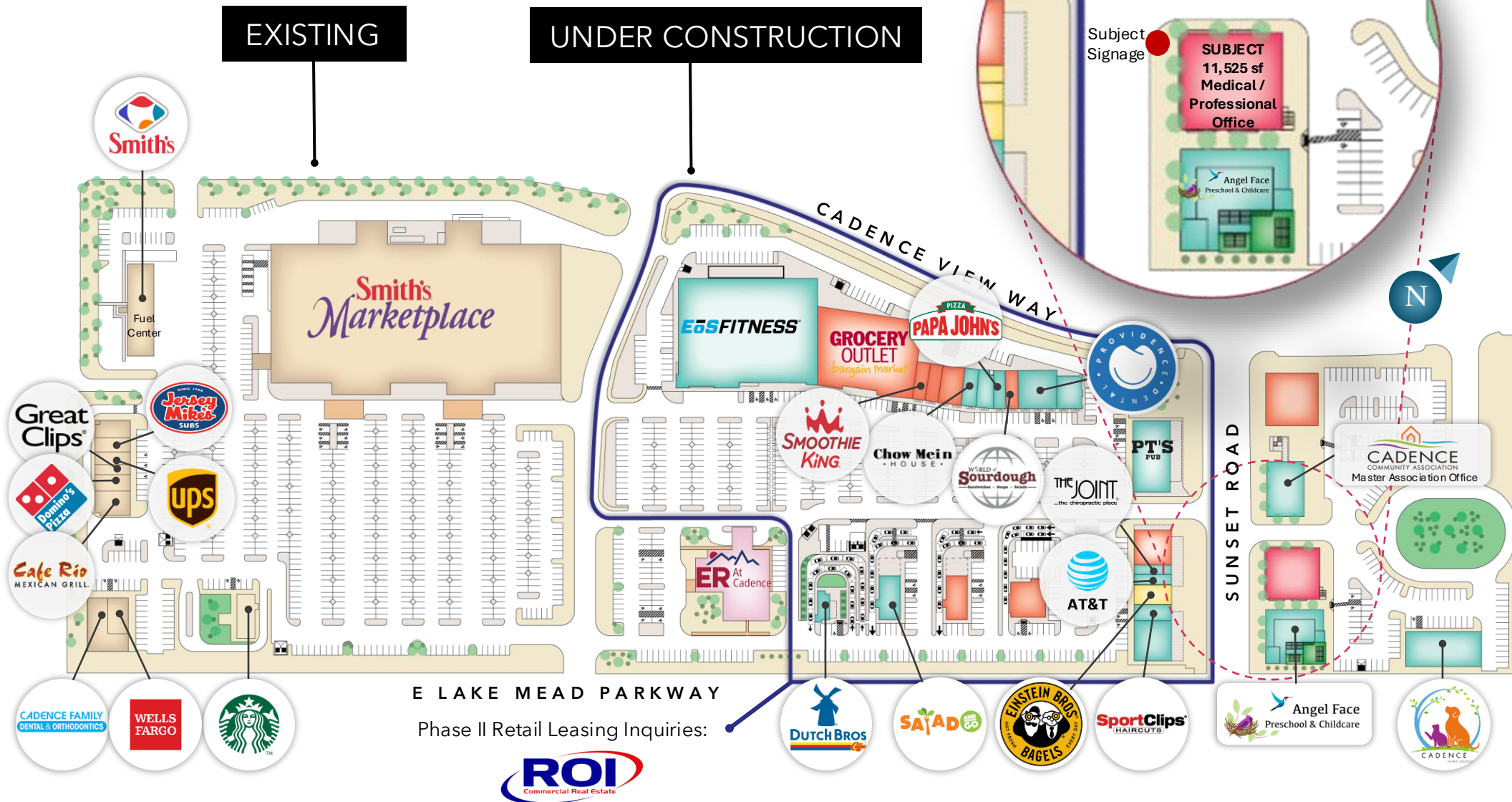
SECOND FLOOR

AVAILABLE SF: 5,912

LOCATION MAP



NEARBY AMENITIES



E LAKE MEAD PARKWAY

Phase II Retail Leasing Inquiries:



Todd Boyer NV Lic S.0024286

702.550.4923 | todd@roicre.com

Robin Civish, CCIM NV Lic BS.0037430

702.550.4977 | robin@roicre.com

Not to Scale: For illustrative purposes only.

Last updated September 3, 2025

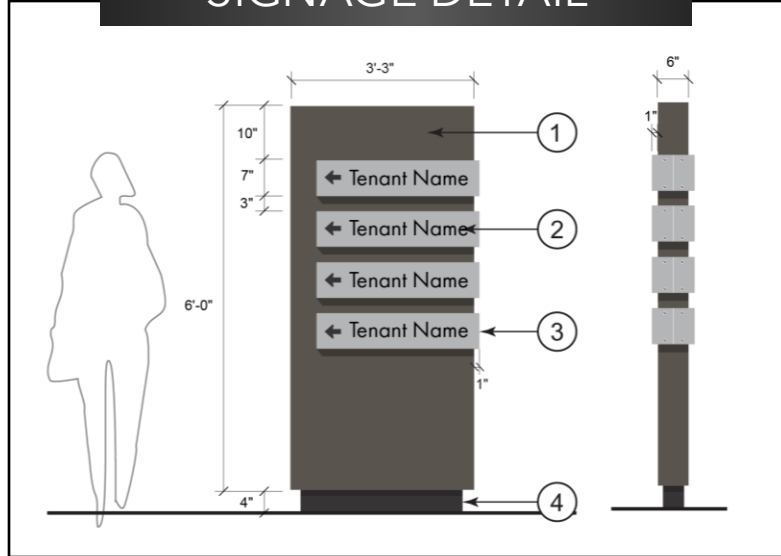
Lake Mead Commercial Center | 1180-1186 E Sunset Rd, Henderson, NV 89011

SUBJECT PROPERTY MAP



ELEVATION & SIGNAGE

SIGNAGE DETAIL



*Stairway and railing design is subject to change to match the existing stairway within the center.

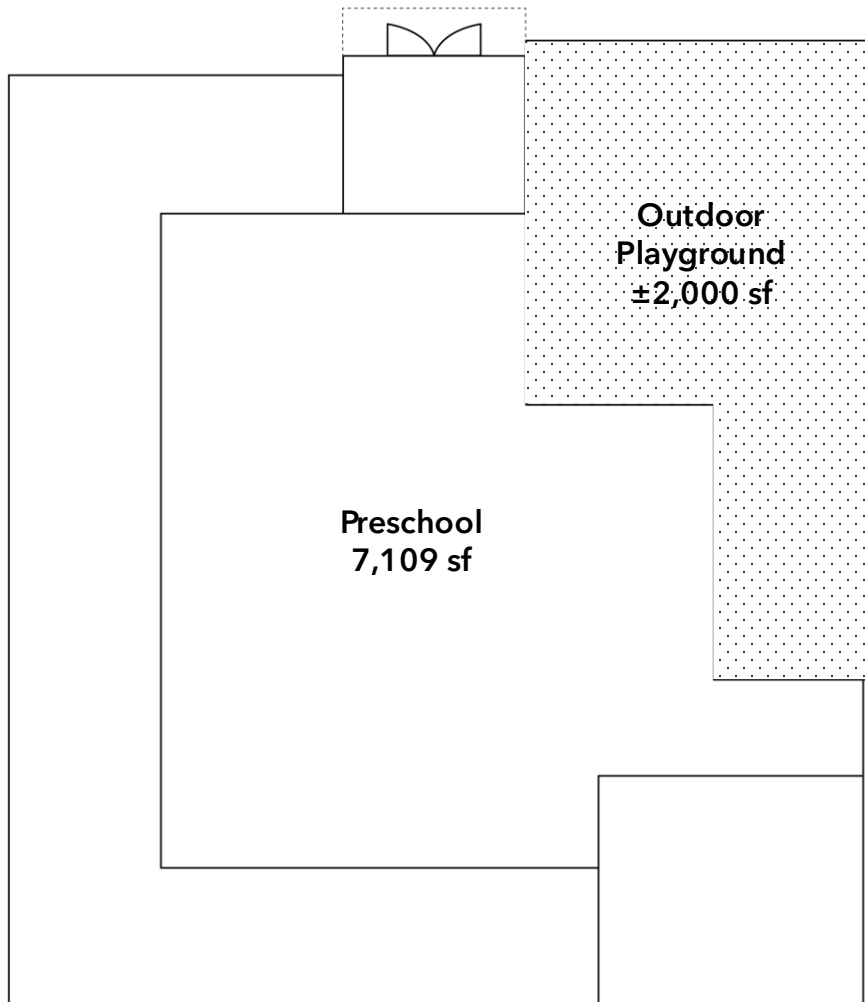


CO-TENANT (NOT A PART, UNDER CONTRACT)

Angel Face Preschool, an established, accredited, and reputable preschool and childcare will be opening their second location adjacent to available medical/professional office structure.

- Designed to accommodate 170 students
- Age group is 6 weeks to 5 years old
- State-of-the-Art learning and play facility
- On-site organic kitchen
- Opening Fall of 2025

www.AngelFacePreschool.com



FLOORPLAN

DISCLAIMER

The information contained in this Offering Memorandum is proprietary and strictly confidential. It is intended to be reviewed only by the party receiving it from Kaylee Cho Commercial & Development Keller Williams Las Vegas Realty and should not be made available to any other person or entity without written consent. This Offering Memorandum has been prepared to provide summary, unverified information to prospective purchasers and/or lessors, and to establish only a preliminary level of interest in the subject property. The information contained herein is not a substitute for a thorough due diligence investigation, and makes no warranty or representation with respect to the income or expenses for the subject property, the future projected financial performance of the property, the size and square footage of the property and improvements, the presence or absence of contaminating substances, PCB's or asbestos, the compliance with State and Federal regulations, the physical condition of the improvements thereon, or the financial condition or business prospects of any tenant, or any tenant's plans or intentions to continue its occupancy of the subject property. The information contained in this Offering Memorandum has been obtained from sources we believe to be reliable; however, Kaylee Cho Commercial & Development Keller Williams Las Vegas Realty has not verified, and will not verify, any of the information contained herein, nor has Kaylee Cho Commercial & Development Keller Williams Las Vegas Realty conducted any investigation regarding these matters and makes no warranty or representation whatsoever regarding the accuracy or completeness of the information provided. All potential buyers and/or lessors must take appropriate measures to verify all of the information set forth herein. By receipt of this Memorandum, you agree that this Memorandum and its contents are of confidential nature, that you will hold and treat it in the strictest confidence and that you will not disclose its contents in any manner detrimental to the interest of the Owner. You also agree that by accepting this Memorandum you agree to release Kaylee Cho Commercial & Development Keller Williams Las Vegas Realty and it harmless from any kind of claim, cost, expense, or liability arising out of your investigation and/or purchase and/or lease of this property.