



1033 Walnut Street

Boulder, CO

Rare Small Building For Sale in Downtown Boulder

Steve Sims

steve@gibbonswhite.com

(303) 586-5932

Lynda Gibbons

lynda@gibbonswhite.com

(303) 586-5920

www.gibbonswhite.com

Property Info & Gallery

View Map

Owner-User Opportunity 2nd & 3rd Floors

Building Size	12,389 sq. ft.
Sale Price	\$4,940,000 (\$398 / sq. ft.)

- Owner-User Opportunity for 2nd & 3rd Floors Ranging from 3,682 - 9,339 sq. ft.
- 1st Floor Totalling 3,050 SF is Fully Leased Providing Net Operating Income of \$127,854
- Offering Seller Financing at 3.5% Year One & 4.5% in Year Two*
- Fantastic Downtown Boulder Location Next Door to Galvanize, Amante & Corrida - Surrounded by Restaurants, Shops & Transit Options
- Elevator Access & In-Suite Shower in 2nd Floor Office
- Recently Opened Office Area has Windows & Doors Overlooking Walnut St
- Seven Reserved, Covered & On Site Parking Spaces (2 for each Office & 3 for Retail)
- Amazing 3rd Floor Balconies Provide Outdoor Break & Entertainment Areas & Bringing Lots of Natural Light into Open Office Area

*To Qualified Buyer & Subject to Terms

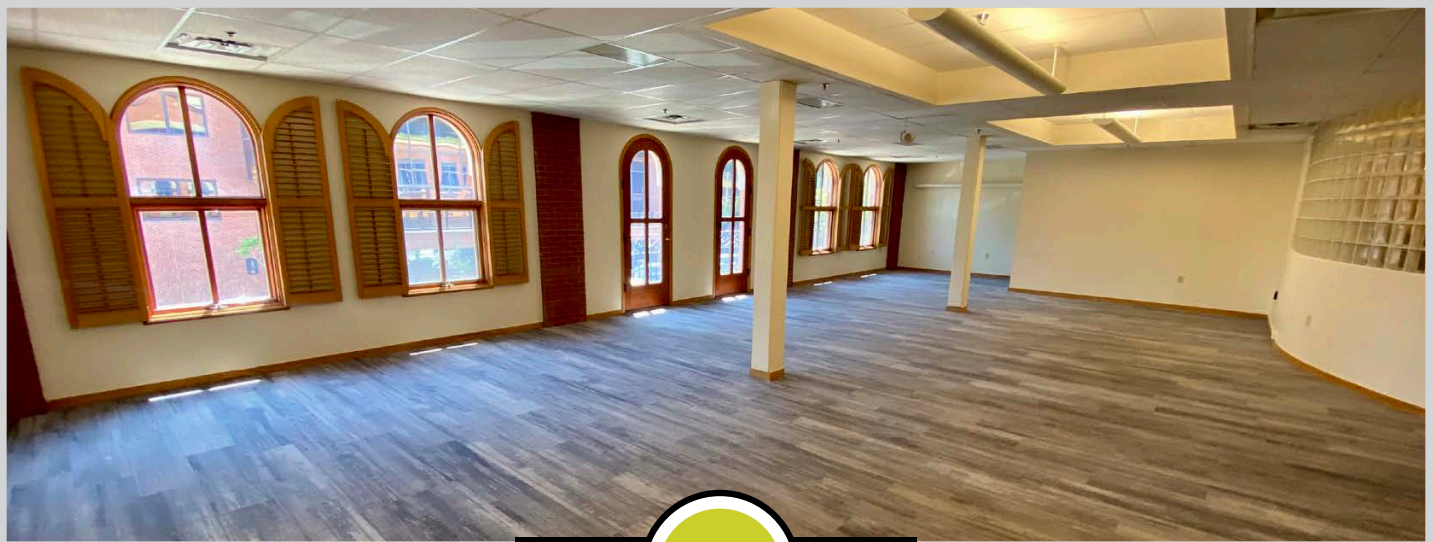
© 2025 Gibbons-White, Inc.



2305 Canyon Blvd, Suite 200, Boulder, CO 80302 • (303) 442-1040

The information included has been obtained from sources believed reliable. While we do not doubt the accuracy, it is unverified and no representation is being made.

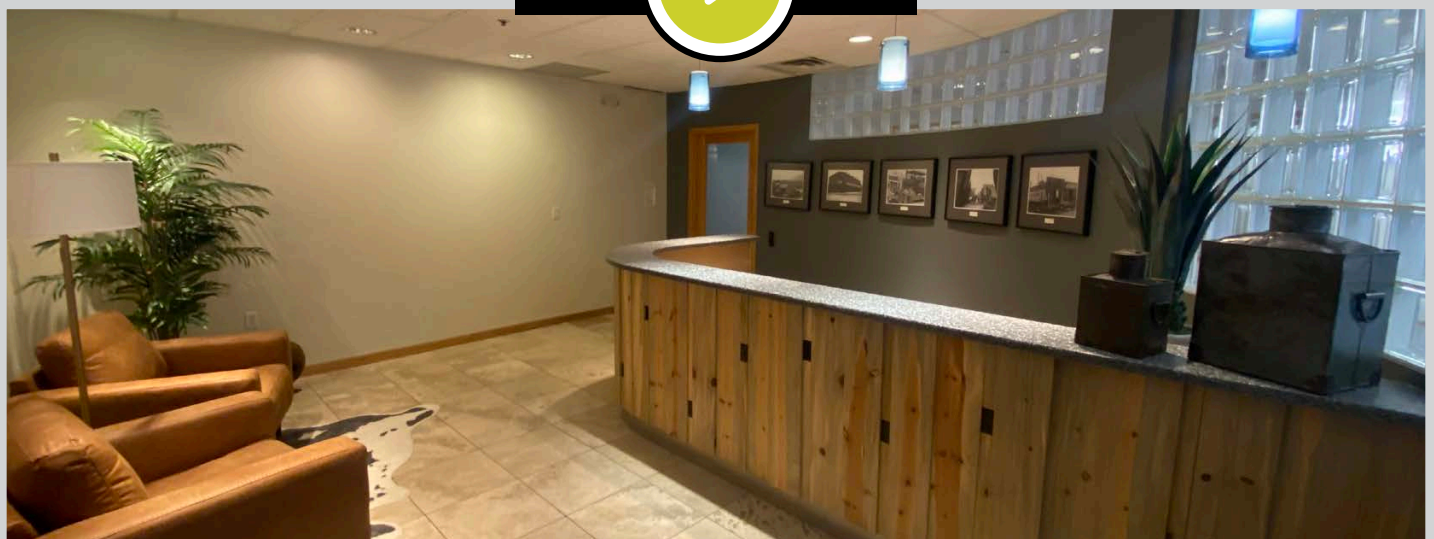
Suite 200 - 5,657 sq. ft.

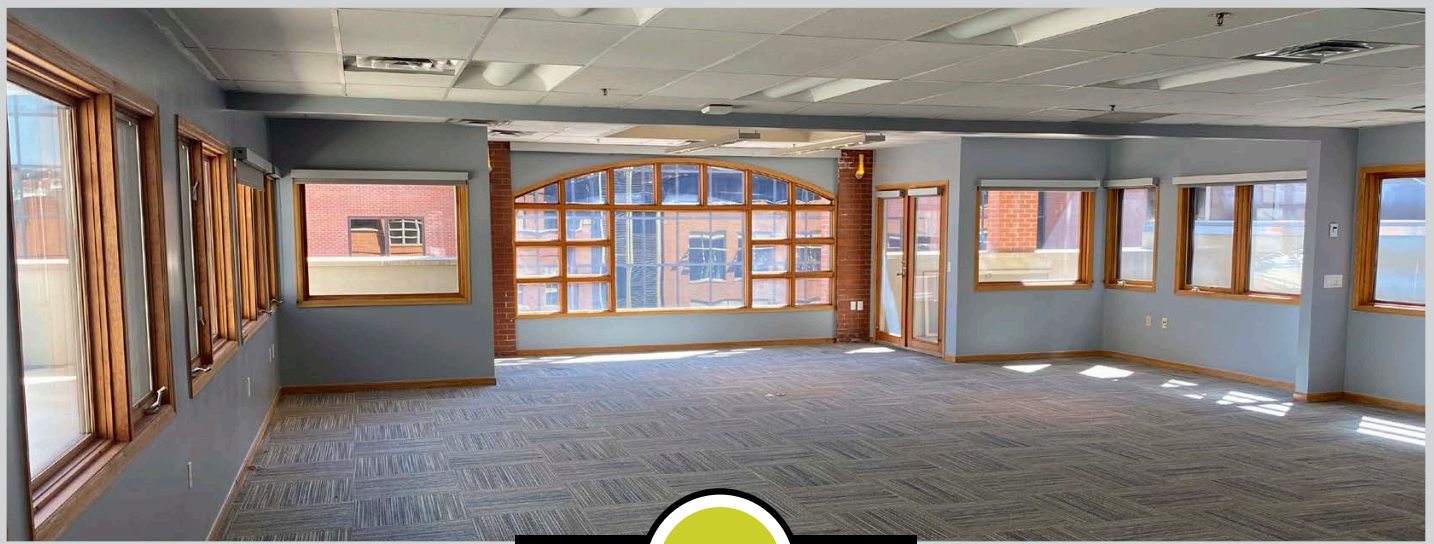
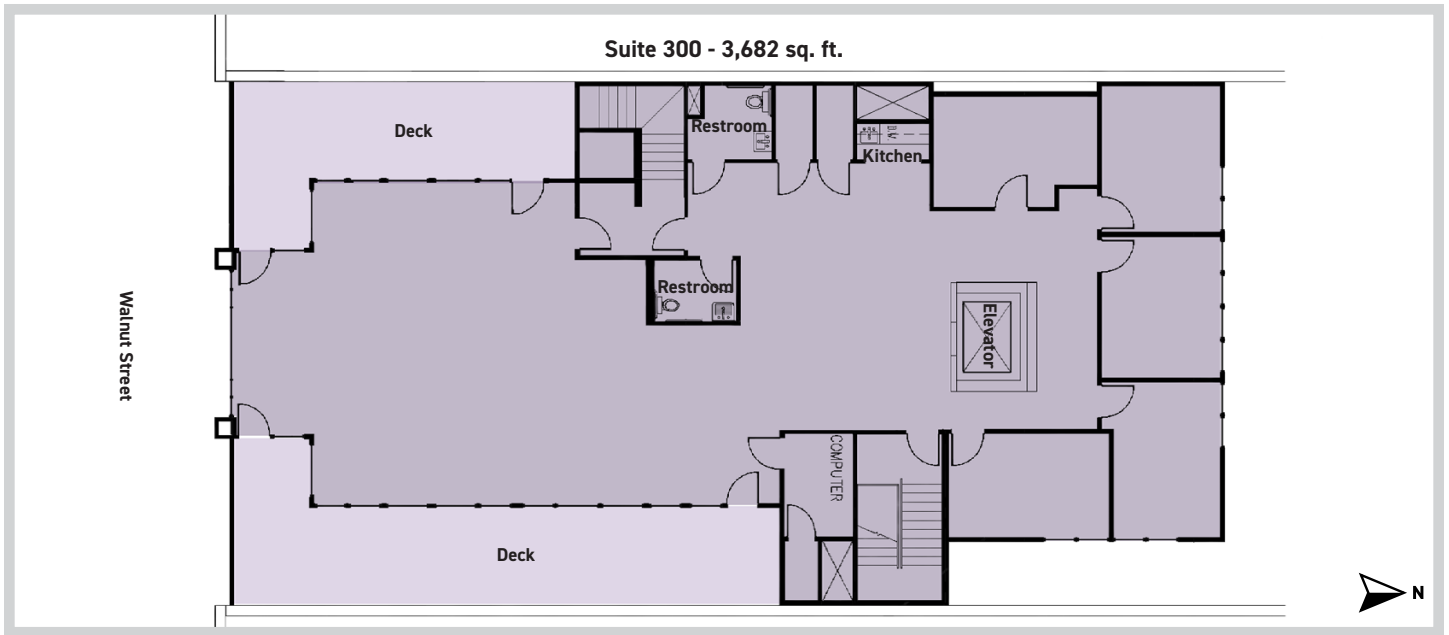


VIDEO

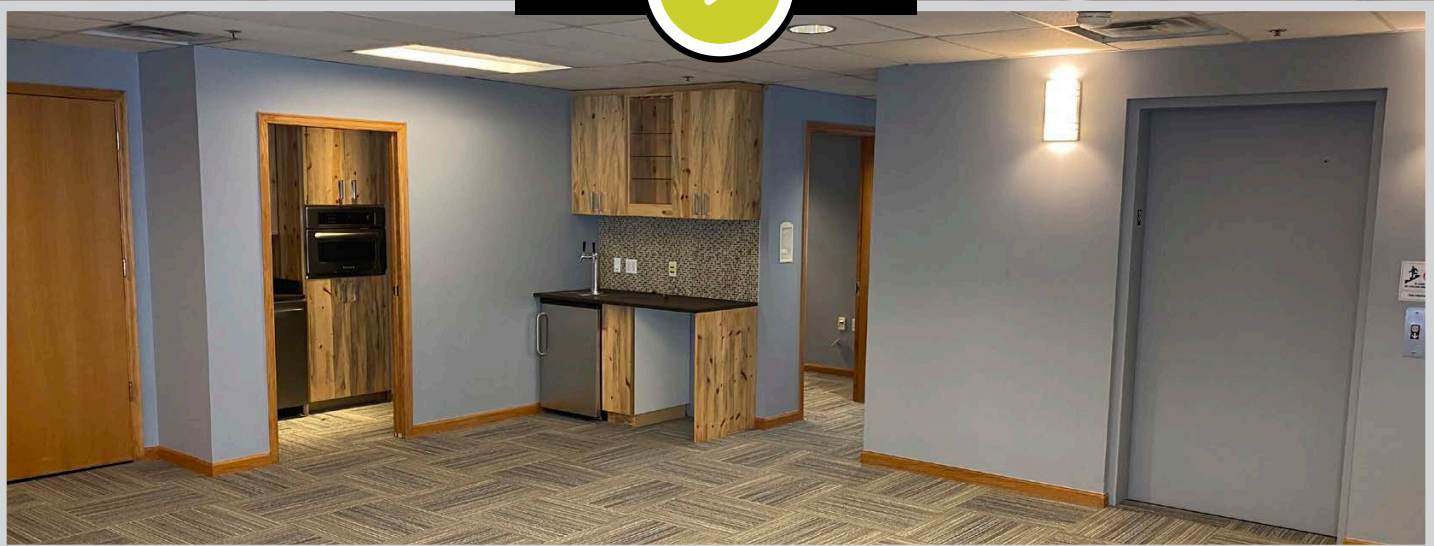


TOUR





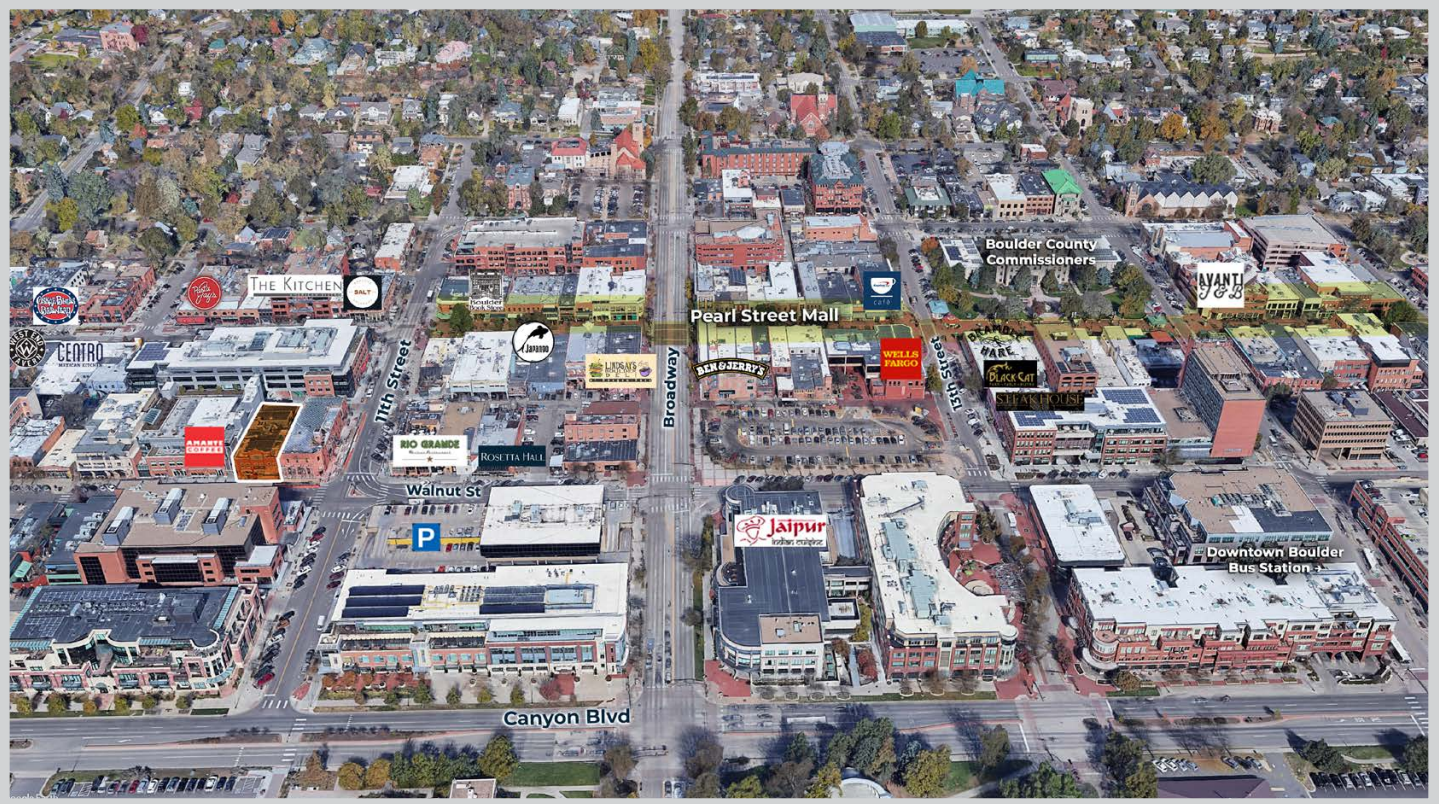
VIDEO TOUR



© 2025 Gibbons-White, Inc.

You'll Be Doing Business in Good Company*

Downtown Boulder offers the Front Range region's finest combination of retail and restaurant offerings. Customers from throughout the Denver market drive to Boulder to experience our one-of-a-kind retail mix and powerful collection of restaurants. The centerpiece of downtown Boulder is the four block award winning Pearl Street Mall, serving as an anchor for the east and west ends of Pearl Street - each district with it's unique business mix and personality.



Downtown Boulder provides a high quality of life and work environment for you and your employees*

From bike trails to seasonal landscaping programs, Downtown Boulder continues to develop as a place that focuses on quality of life attributes as well as a strong base of economic vitality.

- A central location and an exceptional bus system have resulted in downtown Boulder having one of the nation's highest percentage shares of alternative mode transportation (walk, bus, bike) into Downtown.
- Downtown employees are eligible for an EcoPass, which provides unlimited free service on Regional Transportation District routes.
- A 2-mile bike/hike trail through downtown that is part of a larger community trail system
- City and BID commitment to cleanliness, landscaping, design and safety
- Located in the majestic Colorado Front Range at the foot of the famous Boulder Flatirons
- A vast array of cultural and educational opportunities throughout downtown.

© 2025 Gibbons-White, Inc.