

SPACE FOR LEASE

250 AVENUE W, BROOKLYN NY 11223



FOR MORE INFORMATION ON THIS PROPERTY PLEASE CALL OUR OFFICE: **718.517.8700**

PROPERTY DETAILS

SIZE: 7,600 SF AVAILABLE

2ND FLOOR WALK-UP

BUILT TO SUIT AVAILABLE

OPEN AREA WITH MINIMAL COLUMNS

2 ENTRANCES

**OVER 170' FRONTAGE BTW MCDONALD AVE &
AVENUE W**

CLOSE PROXIMITY TO PUBLIC TRANSPORT

OUTDOOR PARKING AVAILABLE

RENTAL RATE : \$30 PSF/YEAR



NEIGHBORHOOD
GRAVESEND



BLOCK & LOT
7170-0010



ZONING
M1-1

FOR MORE INFORMATION ON THIS PROPERTY PLEASE CALL OUR OFFICE: **718.517.8700**

LOCATION OVERVIEW



FOOD UNIVERSE Northfield Bancorp
MARKETPLACE



TOWN TOWN SUPERMARKET Spumoni Gardens
LOUISIANA HOT SPICES PopeYes

SUNOCO **BURGER KING**

CHASE **NEW DUNKIN' DONUTS**
RITE AID **T**

F

TRANSPORTATION

B1 **B3** **B4**

F **D** **N** **Q**

Walk Score **93** Transit Score **100**

250 AVENUE W, BROOKLYN NY 11223

FOR MORE INFORMATION ON THIS PROPERTY PLEASE CALL OUR OFFICE: **718.517.8700**

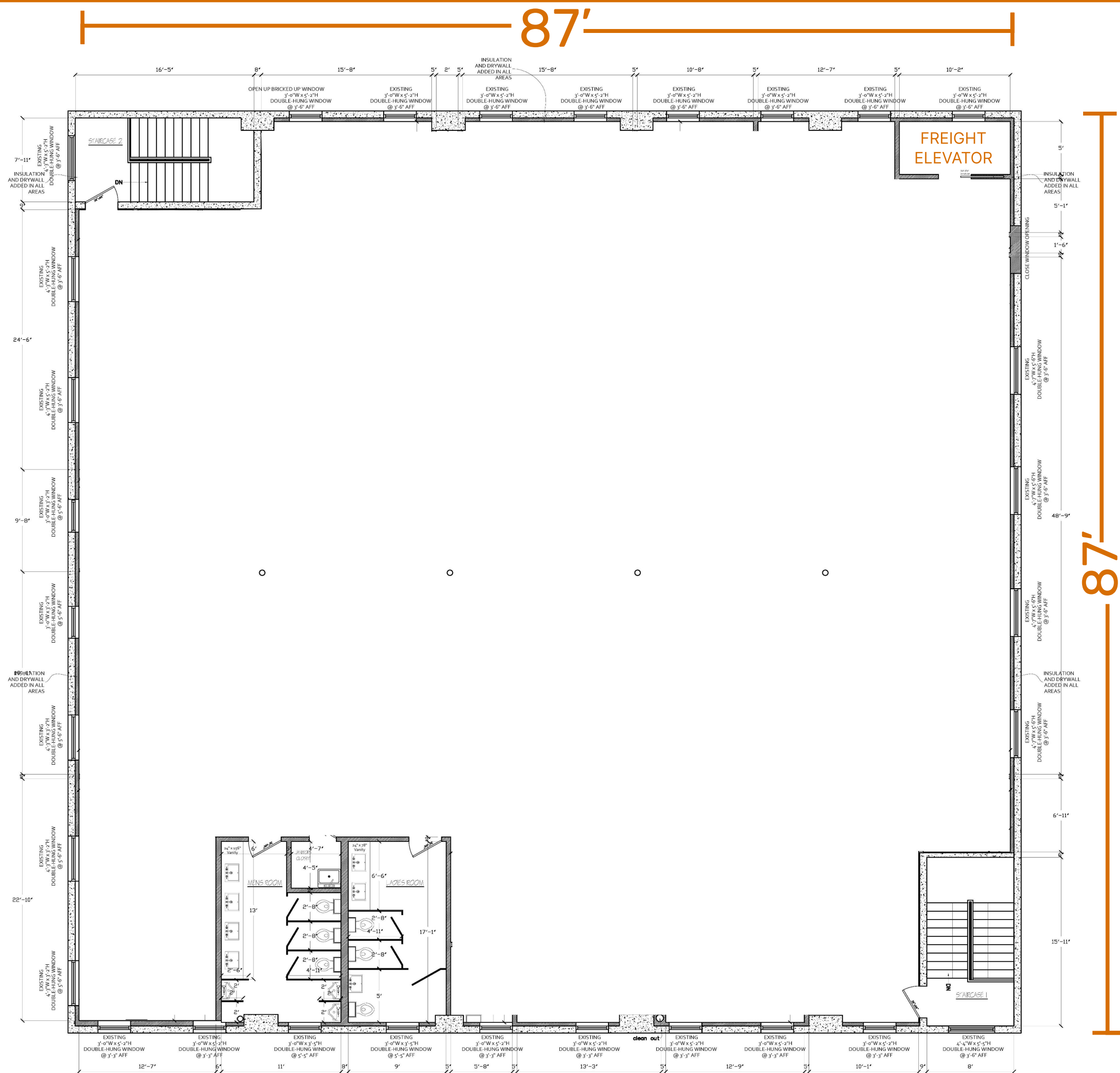
INTERIOR PHOTO



FOR MORE INFORMATION ON THIS PROPERTY PLEASE CALL OUR OFFICE: **718.517.8700**

FLOOR PLAN

MCDONALD AVENUE



AVENUE W

SATELLITE PHOTO



FOR MORE INFORMATION ON THIS PROPERTY PLEASE CALL OUR OFFICE: **718.517.8700**

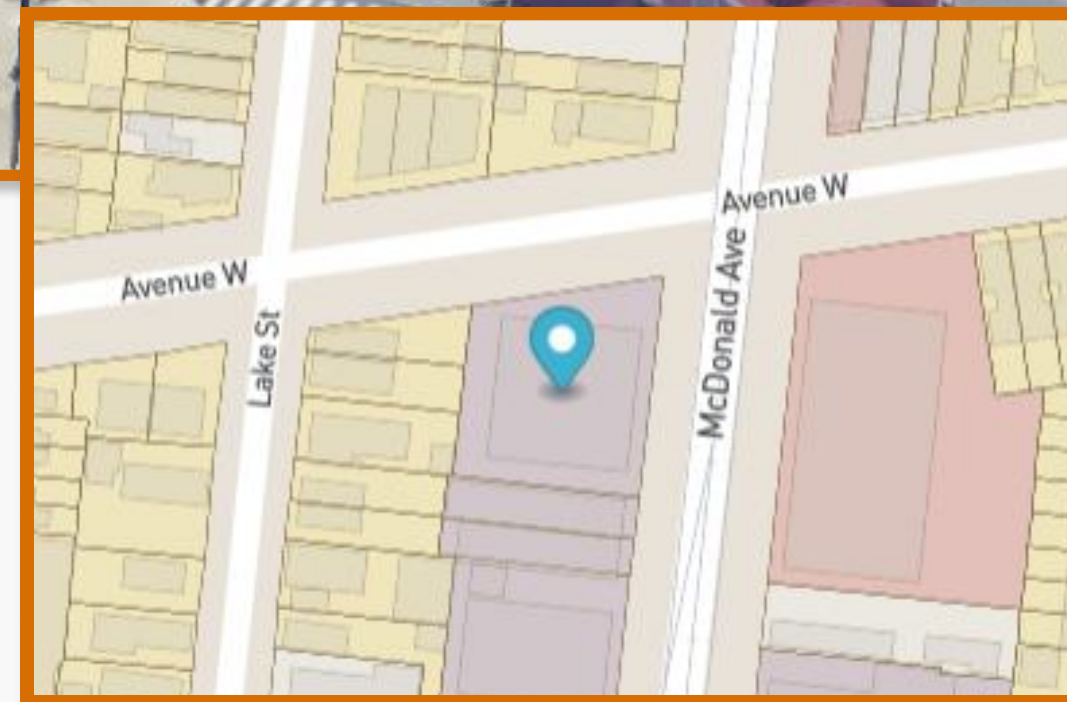
CONTACT US



CONTACT EXCLUSIVE BROKER



ARSEN ATBASHYAN
CELL: 917.939.3760
ARSEN@COMMERCIALACQ.COM



FOR MORE INFORMATION ON THIS PROPERTY PLEASE CALL OUR OFFICE: 718.517.8700

© 2500 CONEY ISLAND AVENUE, 2ND FLOOR, BROOKLYN, NY 11223 ☎ 917.939.3760 ✉ ARSEN@COMMERCIALACQ.COM 🌐 COMMERCIALACQ.COM

COMMERCIAL ACQUISITIONS INC. HAS MADE EVERY EFFORT TO OBTAIN THE INFORMATION REGARDING THESE LISTINGS FROM SOURCES DEEMED RELIABLE. HOWEVER, WE CANNOT WARRANT THE COMPLETE ACCURACY THEREOF SUBJECT TO ERRORS, OMISSIONS, CHANGE OF PRICE, RENTAL OR OTHER CONDITIONS, PRIOR SALE, LEASE OR FINANCING, OR WITHDRAWAL WITHOUT NOTICE. WE RECOMMEND TO THE BUYER THAT ANY INFORMATION, WHICH IS OF SPECIAL INTEREST, SHOULD BE OBTAINED THROUGH INDEPENDENT VERIFICATION. ALL MEASUREMENTS MAY BE APPROXIMATE.