

MEDICAL OFFICE BUILDING ("MOB")

FOR LEASE

950 S Arroyo Pkwy
Pasadena, CA 91105

AVAILABLE SPACES:

- Suite 310:** 2,812 SF
- Suite 340:** 1,767 SF
- Suite 210:** 2,586 SF
- Suite 220:** 2,328 SF
- Suite 230:** 1,755 SF
- Suite 250:** 2,858 SF

Exclusively Listed by:

John S. Archibald
Executive Vice President
626.204.1527 direct
jarchibald@naicapital.com
Cal DRE Broker Lic #00996775

Mathias Bender
Associate
626.204.1510 direct
mbender@naicapital.com
Cal DRE Broker Lic #02241457

No warranty, express or implied, is made as to the accuracy of the information contained herein. This information is submitted subject to errors, omissions, change of price, rental or other conditions, withdrawal without notice, and is subject to any special listing conditions imposed by our principals. Cooperating brokers, buyers, tenants and other parties who receive this document should not rely on it, but should use it as a starting point of analysis, and should independently confirm the accuracy of the information contained herein through a due diligence review of the books, records, files and documents that constitute reliable sources of the information described herein. Logos are for identification purposes only and may be trademarks of their respective companies. NAI Capital, Inc. Cal DRE Lic. #02130474.

NAI Capital
COMMERCIAL REAL ESTATE SERVICES, WORLDWIDE

naicapital.com

EXECUTIVE SUMMARY



PROPERTY HIGHLIGHTS

NAI Capital Commercial, Inc. is pleased to present "Space For Lease" at the Class "A" Medical Office Building ("MOB") located at 950 S. Arroyo Parkway, Pasadena CA. There are (3) three contiguous suits vacant on the 2nd floor of approximately 2,586, 2,328 and 1,755 sqft totaling approximately 6,669 sqft, which is newly built-out and ready for immediate occupancy. The property is located on the south entrance to west Pasadena via Arroyo Parkway and is only 1.3 miles away from the renowned Huntington Memorial Hospital. The property has highly built out medical office space with balconies allowing users to take advantage of Pasadena's great climate and picturesque views of the San Gabriel Mountains and surrounding San Gabriel Valley area. Given its location at the south entrance to Pasadena and its proximity to the Foothill 210 and Ventura 134 Freeways, ingress and egress to and from the property is surpassed by no other.

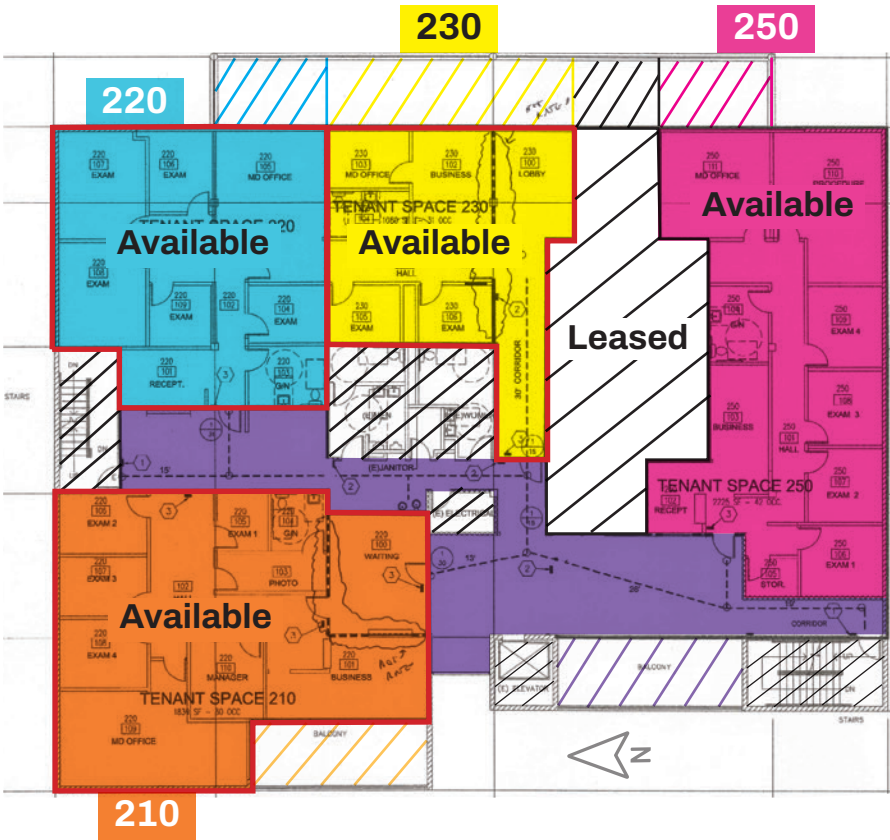
PROPERTY SUMMARY

Location:	950 S Arroyo Pkwy., Pasadena CA 91105
Building:	±21,876 SF
Land:	±20,909 SF (±0.48 Acres)
Parking:	2.33/1,000 SF (52 covered & uncovered at grade level stalls)
APN:	5720-017-037
Zoning:	SFO-MU-C
Year Built:	1981 (All spaces all recently built-out)
Asking Rental Rate:	\$3.50 NNN

FLOOR PLANS

950 S Arroyo Pkwy., Pasadena, CA 91105

2nd Floor

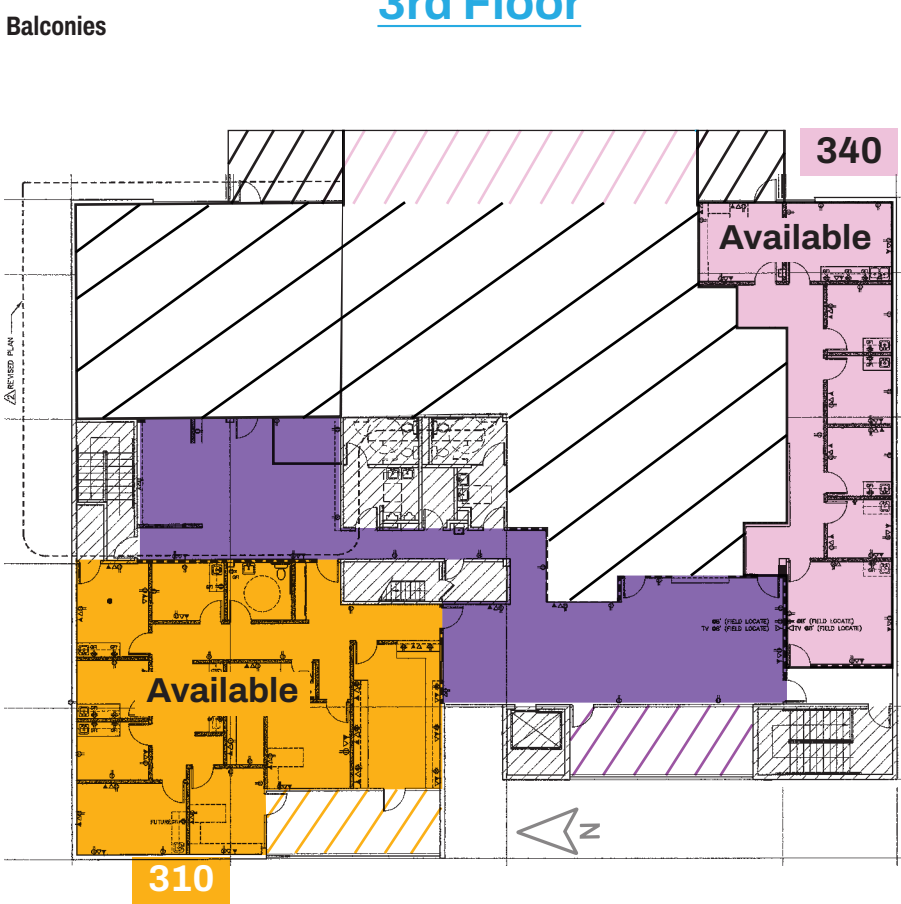


Available Spaces 2nd Floor

SUITE	SQ. FT.
210*	2,586
220*	2,328
230*	1,755
250	2,858

*Contiguous Space

3rd Floor



Available Spaces 3rd Floor

SUITE	SQ. FT.
310	2,812
340	1,767

AMENITIES MAP

