

Southfield Crossing II

25510

FOR SALE OR LEASE

25510 W 11 Mile Rd, Southfield MI

DANIEL CANVASSER

Executive Managing Director
248-350-8141
daniel.canvasser@nmrk.com

GEOFF HILL

Executive Managing Director
248-350-1492
geoff.hill@nmrk.com

CHRIS HILL

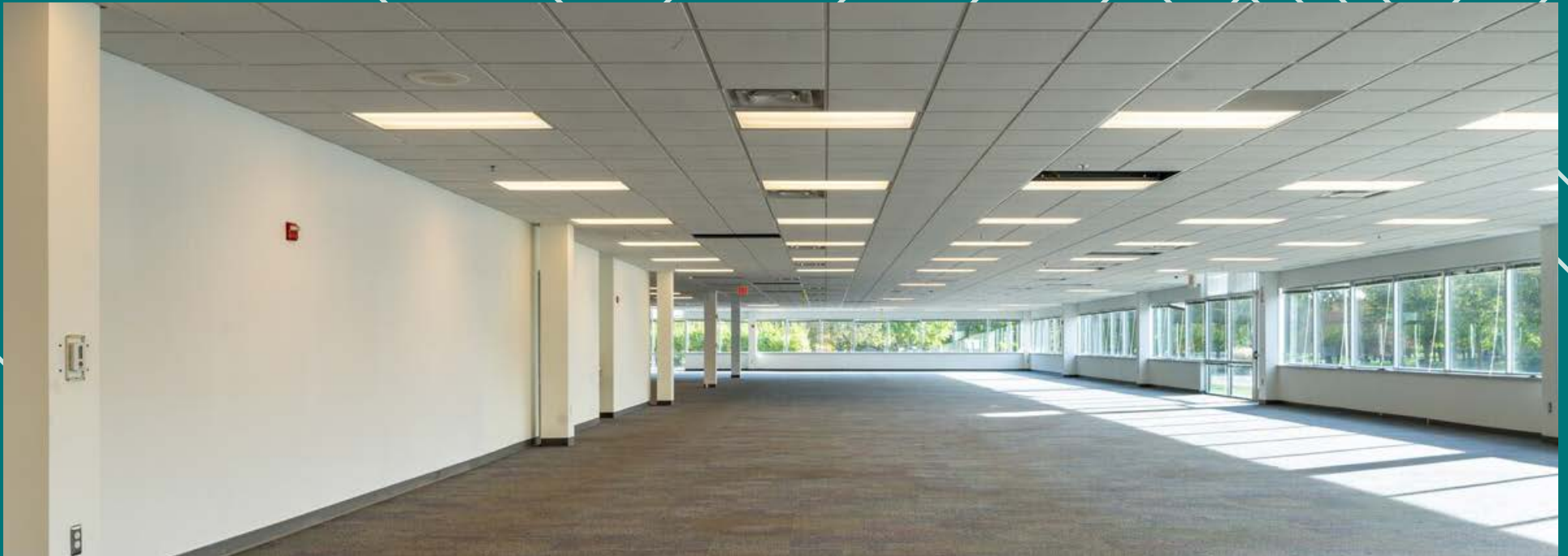
Director
248-350-1192
chris.hill@nmrk.com

NEWMARK



DOUGLAS CAPITAL PARTNERS

PROPERTY OVERVIEW



Property Size: 66,195 SF

Available Space: 9,940 – 66,195 SF

Asking Net Rent: \$11.95/SF NNN

Asking Sale Price: Subject to Offer

Operating Expenses: \$2.79/SF

Power: 1600 amps/480v (3-Phase)

Ceiling Height: 14'

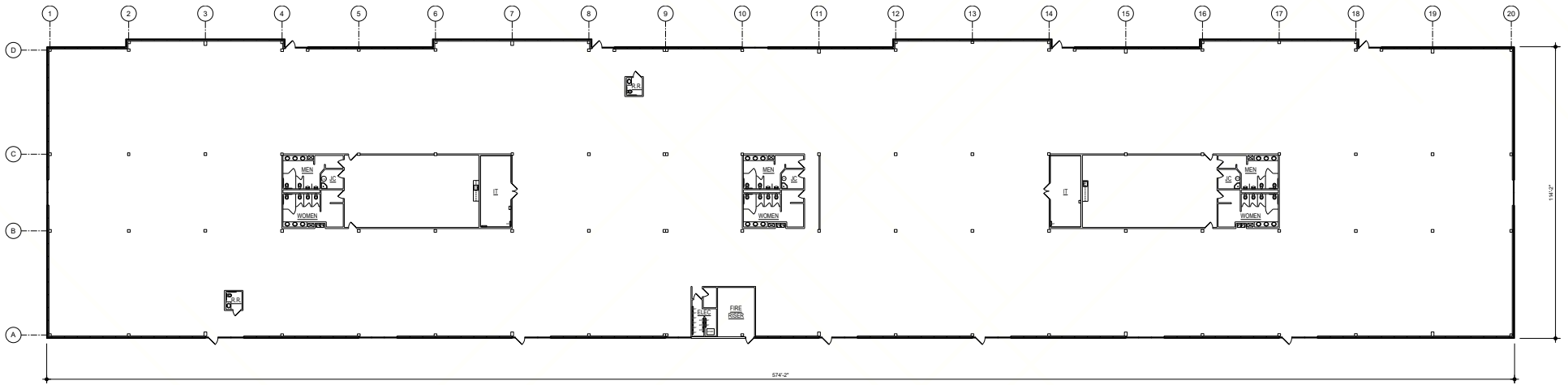
Grade Level Doors: Can be added up to 14'

Parking: 260 space (3.93/1000)

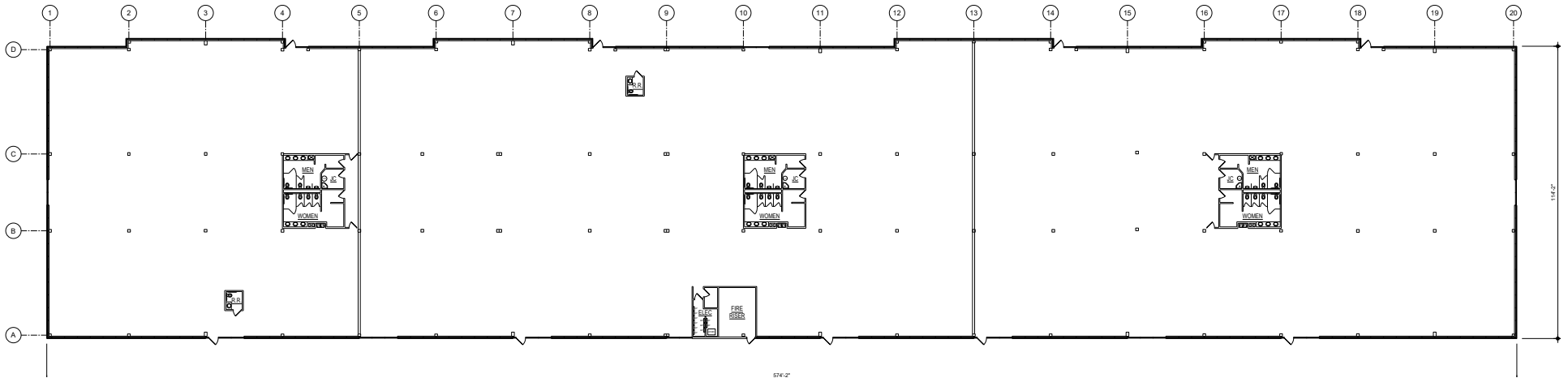
Zoning: Flexible for Light Industrial, Office, Lab, R&D, etc

FLOOR PLAN

STANDARD FLOOR PLAN



POTENTIAL SPLIT FLOOR PLAN



AERIAL



DANIEL CANVASSER

Executive Managing Director
248-350-8141
daniel.canvasser@nmrk.com

GEOFF HILL

Executive Managing Director
248-350-1492
geoff.hill@nmrk.com

CHRIS HILL

Director
248-350-1192
chris.hill@nmrk.com

nmrk.com

26555 Evergreen Road, Suite 500, Southfield, Michigan 48076

The information contained herein has been obtained from sources deemed reliable but has not been verified and no guarantee, warranty or representation, either express or implied, is made with respect to such information. Terms of sale or lease and availability are subject to change or withdrawal without notice.

NEWMARK