

For Lease

Lease Rate:

\$8.50 PSF, NNN

Contact:

John Stafford, SIOR

Vice Chair
+1 816 556 1184
john.stafford@colliers.com

Jack Higgins

Senior Vice President
+1 816 556 1170
jack.higgins@colliers.com

Colliers Kansas City

4520 Main Street, Suite 1000
Kansas City, MO 64111
+1 816 531 5303
colliers.com/kansascity

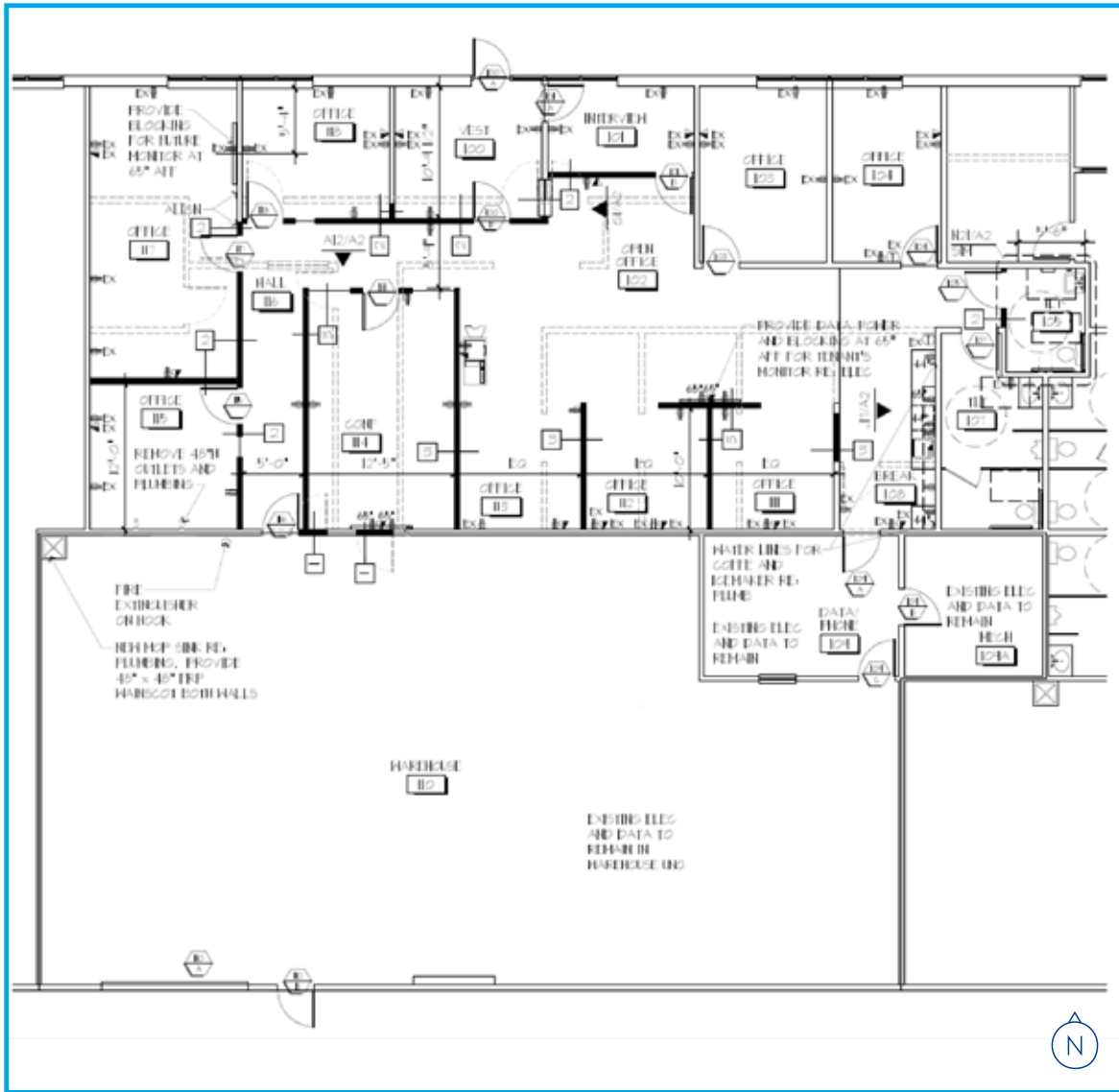
14705-14719 W. 114th Terrace Lenexa, Kansas

Property Features

- Building Size: 17,212± SF
- Space Available: 5,615 SF
 - » Office: 2,800± SF
 - » Loading: one drive-in door (12'x14')
- Land Area: 2.51 acres
- Year Built: 2000
- Parking: 57 striped spaces and fenced outdoor storage lot
- Zoning: BP-1
- Clear Height: 14'
- Lease Rate: \$8.50 PSF, NNN
 - » Taxes: \$3.40 PSF
 - » Insurance: \$0.52 PSF
 - » CAM: \$2.22 PSF

Floor Plan

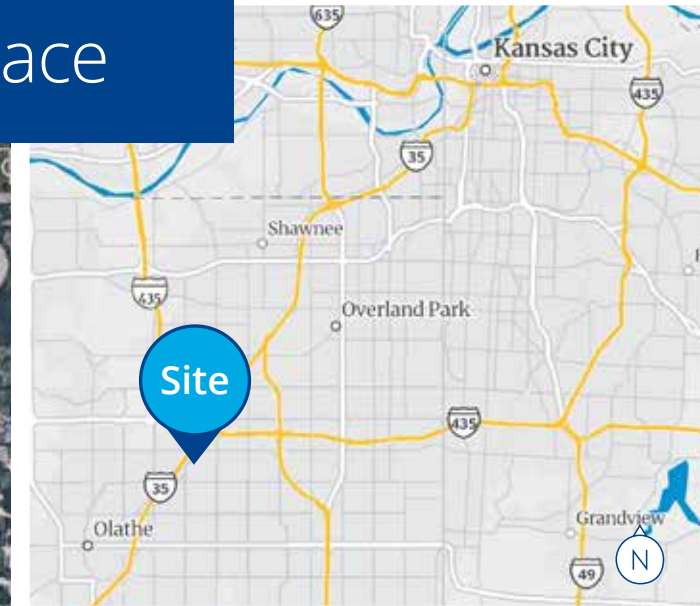
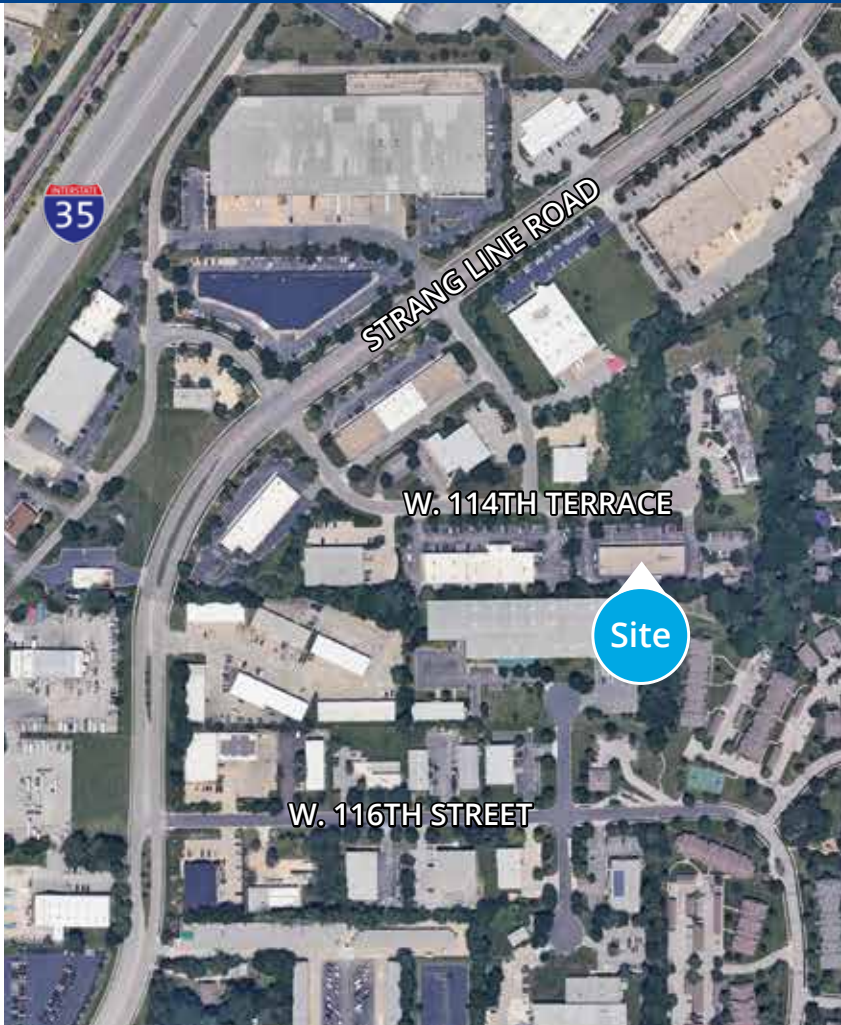
104711 W. 114th Terrace: 5,615 SF



Property Gallery



14705-14719 W. 114th Terrace



John Stafford, SIOR
Vice Chair
+1 816 556 1184
john.stafford@colliers.com

Jack Higgins
Senior Vice President
+1 816 556 1170
jack.higgins@colliers.com

Colliers Kansas City
4520 Main Street, Suite 1000
Kansas City, MO 64111
+1 816 531 5303
colliers.com/kansascity

This document has been prepared by Colliers for advertising and general information only. Colliers makes no guarantees, representations or warranties of any kind, expressed or implied, regarding the information including, but not limited to, warranties of content, accuracy and reliability. Any interested party should undertake their own inquiries as to the accuracy of the information. Colliers excludes unequivocally all inferred or implied terms, conditions and warranties arising out of this document and excludes all liability for loss and damages arising there from. This publication is the copyrighted property of Colliers and/or its licensor(s). © 2024. All rights reserved. This communication is not intended to cause or induce breach of an existing listing agreement.

