

Hunt River Commons

20 Frenchtown Road

North Kingstown, Rhode Island 02852



Location - Washington County

- Located in North Kingstown, RI, just south of Warwick and East Greenwich
- 11,556 AADT on Frenchtown Road and 25,839 AADT on Post Road
- Direct, easy access to three major roads: RI 4, Route 403 and Route 1
- The center serves a very affluent customer base, with an average household income of \$117,845 within a 3 miles
- Signalized entrance on Frenchtown Road

Center

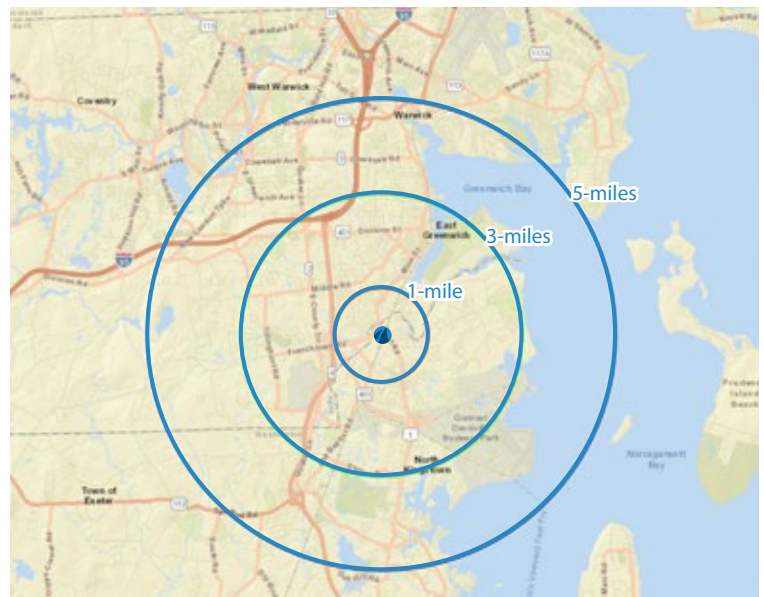
- 149,321 SF Grocery Anchored Community Center with Stop & Shop, Marshalls and Planet Fitness
- Other tenants include Great Clips, Sprint, Citizens Bank and Rhode Eyeland

NOW LEASING:

4,548 SF and .25 Acre Pad Site

Demographics (2023 Estimates)

	1-mile radius	3-mile radius	5-mile radius
Population	3,976	26,941	66,276
Average HH Income	\$150,826	\$159,111	\$138,100



Disclaimer: While Broad Reach Retail Partners, LLC and its affiliates believe the information contained herein to be true and accurate, they make no claims or warranties. Any prospective tenant should conduct thorough, independent due diligence.

For leasing information, please contact:

Johnathan Ortner

jortner@broadreachretail.com | 443.813.2514

www.broadreachretail.com

Hunt River Commons

20 Frenchtown Road

North Kingstown, Rhode Island 02852

Site Plan



Suite	Tenant	SF
1	Marshall's	35,820
2	Available	4,548
3	Great Clips	1,400
4	T-Mobile	1,400
5/6	Talent Factory	12,363
7	Ivy Rehab Physical Therapy	2,400
8A	Planet Fitness	18,261
8B	Parker Construction	3,633
9	Pokemoto	1,200
10	So Co Cycle	2,000
11	Rhode Eyeland	2,500
12	Stop & Shop	59,245
13	Citizens Bank	4,551
PAD	Available	.25 ACRES
	Total GLA	149,321



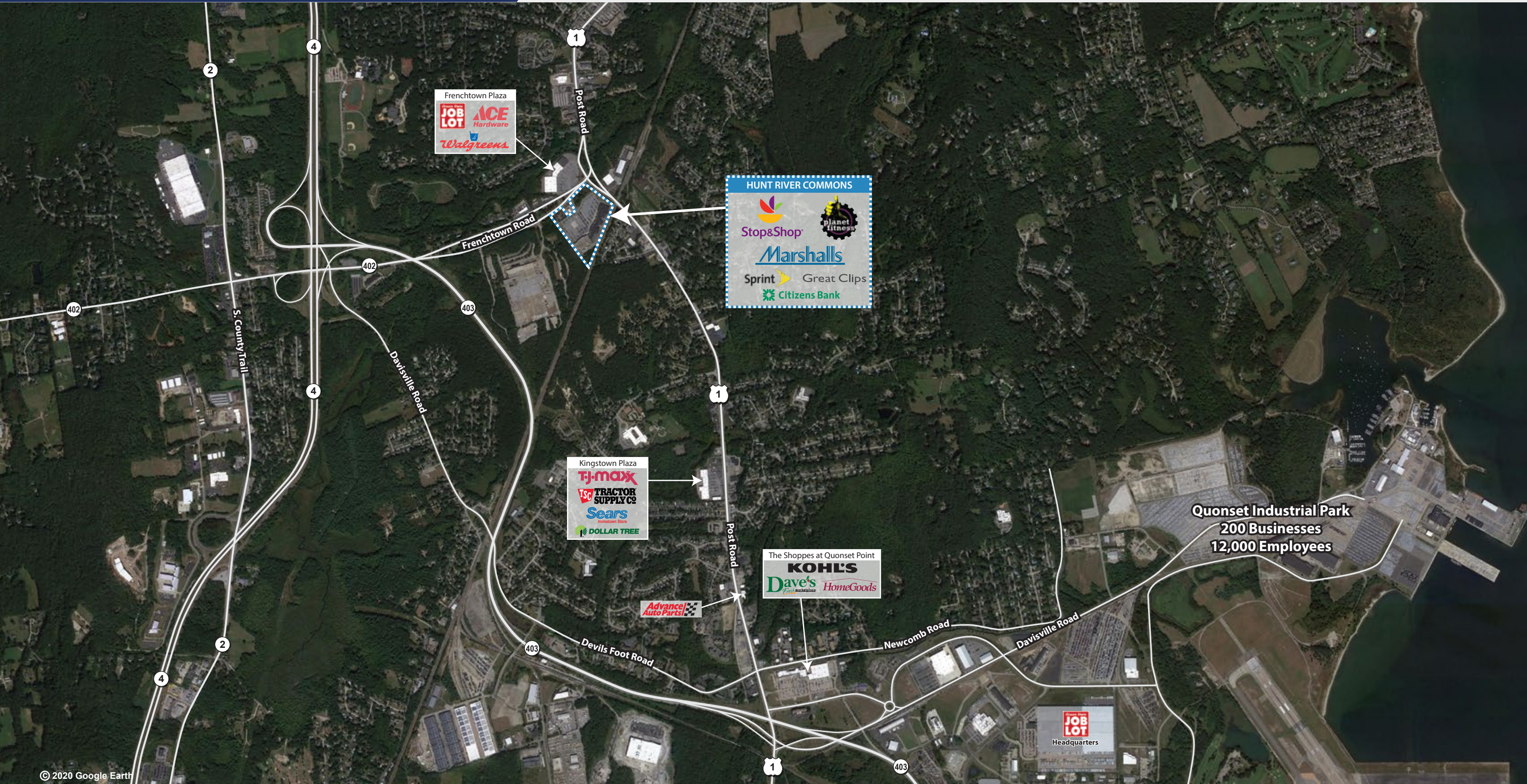
Disclaimer: While Broad Reach Retail Partners, LLC and its affiliates believe the information contained herein to be true and accurate, they make no claims or warranties. Any prospective tenant should conduct thorough, independent due diligence.

For leasing information, please contact:

Johnathan Ornter

johnorter@broadreachretail.com | 443.813.2514

www.broadreachretail.com



© 2020 Google Earth

Disclaimer: While Broad Reach Retail Partners, LLC and its affiliates believe the information contained herein to be true and accurate, they make no claims or warranties. Any prospective tenant should conduct thorough, independent due diligence.

For leasing information, please contact:
Johnathan Ortner
jortner@broadreachretail.com | 443.813.2514

www.broadreachretail.com