

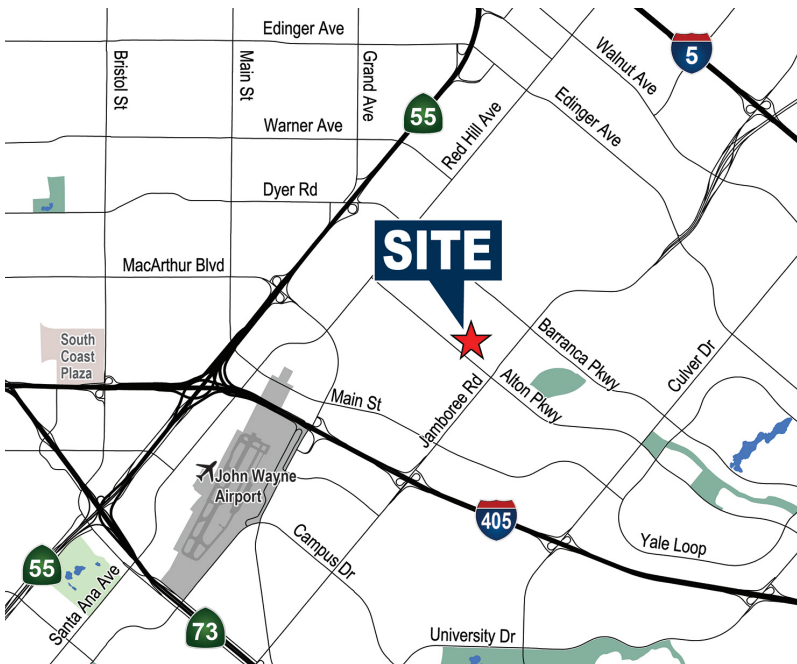
FOR LEASE

±14,243 SF Distribution/Warehouse

2493 Du Bridge, Irvine, CA 92606

Voit

REAL ESTATE SERVICES



FEATURES:

- Fantastic IBC Location
- ±6,536 SF of Functional Office
- 18' Warehouse Clearance
- Nine (9) Private Offices, Two (2) Large Open Areas, Large Conference Room and Kitchen
- Two (2) Ground Level, Roll-up Doors
- Power: 400 Amp Service
- 2:1,000 Parking Ratio
- Possible Future Expansion to ±20,436 SF

Sam Olmstead
Vice President

949.263.5342
solmstead@voitco.com
Lic. #01186543

Trent Walker
Executive Vice President

949.263.5342
twalker@voitco.com
Lic. #00964476

2020 Main Street, Suite 100, Irvine, CA 92614 | 949.851.5100 • 949.261.9092 Fax

Voit

REAL ESTATE SERVICES

Licensed as Real Estate Salespersons by the DRE. The information contained herein has been obtained from sources we deem reliable. While we have no reason to doubt its accuracy, we do not guarantee it. ©2025 Voit Real Estate Services, Inc. All Rights Reserved. Lic. #01991785

www.VoitCo.com

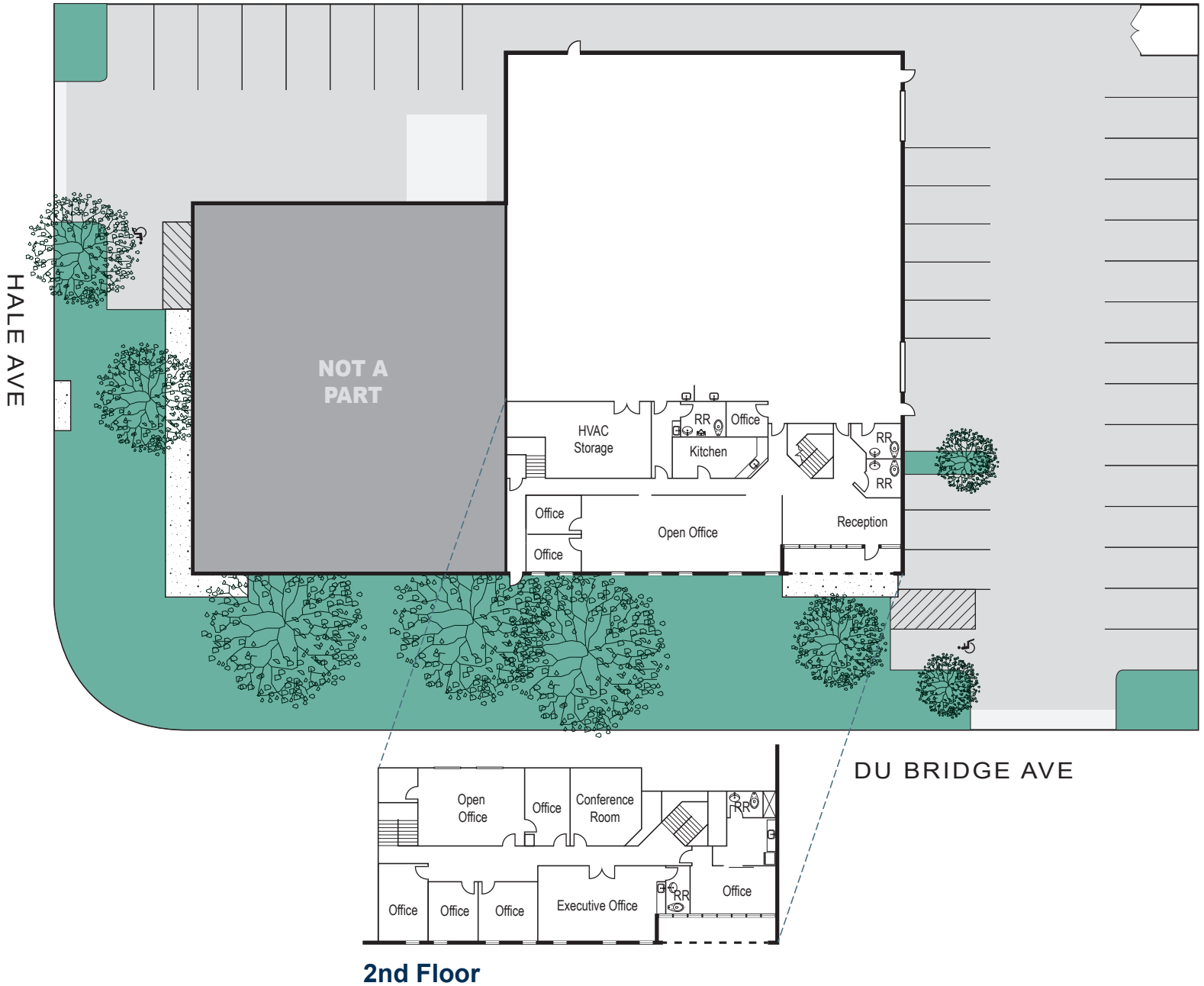
FOR LEASE

±14,243 SF Distribution/Warehouse

2493 Du Bridge, Irvine, CA 92606

Voit

REAL ESTATE SERVICES



Sam Olmstead
Vice President
949.263.5342
solmstead@voitco.com
Lic. #01186543

Trent Walker
Executive Vice President
949.263.5342
twalker@voitco.com
Lic. #00964476

2020 Main Street, Suite 100, Irvine, CA 92614 | 949.851.5100 • 949.261.9092 Fax

Voit

REAL ESTATE SERVICES

www.VoitCo.com

Licensed as Real Estate Salespersons by the DRE. The information contained herein has been obtained from sources we deem reliable. While we have no reason to doubt its accuracy, we do not guarantee it. ©2025 Voit Real Estate Services, Inc. All Rights Reserved. Lic. #01991785