

A modern, multi-story office building with large glass windows and a dark facade. The word "WaterPlace" is written vertically on the side of the building. The building is surrounded by lush green trees and a paved area with some outdoor seating and umbrellas. The sky is clear and blue.

Available For Lease

WaterPlace

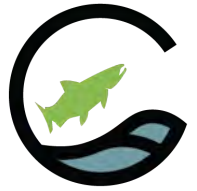
500 Liberty Street SE, Suite 400
Salem, OR 97301

Offering Memorandum Presented By:

Peter Braunworth
Principal Broker
peter@cohocommercial.com
971.707.4646 x103
cohocommercial.com

Jeff Corner
Principal Broker
jeff@cohocommercial.com
503.584.1838

Goho
COMMERCIAL



WaterPlace

500 Liberty Street SE, Suite 400, Salem, OR 97301

Table of Contents

PROPERTY INFORMATION	3
LOCATION INFORMATION	15
DEMOGRAPHICS	17

Confidentiality & Disclaimer

All materials and information received or derived from Coho Commercial its directors, officers, agents, advisors, affiliates and/or any third party sources are provided without representation or warranty as to completeness, veracity, or accuracy, condition of the property, compliance or lack of compliance with applicable governmental requirements, developability or suitability, financial performance of the property, projected financial performance of the property for any party's intended use or any and all other matters.

Neither Coho Commercial its directors, officers, agents, advisors, or affiliates makes any representation or warranty, express or implied, as to accuracy or completeness of the any materials or information provided, derived, or received. Materials and information from any source, whether written or verbal, that may be furnished for review are not a substitute for a party's active conduct of its own due diligence to determine these and other matters of significance to such party. Coho Commercial will not investigate or verify any such matters or conduct due diligence for a party unless otherwise agreed in writing.

EACH PARTY SHALL CONDUCT ITS OWN INDEPENDENT INVESTIGATION AND DUE DILIGENCE.

Any party contemplating or under contract or in escrow for a transaction is urged to verify all information and to conduct their own inspections and investigations including through appropriate third party independent professionals selected by such party. All financial data should be verified by the party including by obtaining and reading applicable documents and reports and consulting appropriate independent professionals. Coho Commercial makes no warranties and/or representations regarding the veracity, completeness, or relevance of any financial data or assumptions. Coho Commercial does not serve as a financial advisor to any party regarding any proposed transaction. All data and assumptions regarding financial performance, including that used for financial modeling purposes, may differ from actual data or performance. Any estimates of market rents and/or projected rents that may be provided to a party do not necessarily mean that rents can be established at or increased to that level. Parties must evaluate any applicable contractual and governmental limitations as well as market conditions, vacancy factors and other issues in order to determine rents from or for the property.

Legal questions should be discussed by the party with an attorney. Tax questions should be discussed by the party with a certified public accountant or tax attorney. Title questions should be discussed by the party with a title officer or attorney. Questions regarding the condition of the property and whether the property complies with applicable governmental requirements should be discussed by the party with appropriate engineers, architects, contractors, other consultants and governmental agencies. All properties and services are marketed by Coho Commercial in compliance with all applicable fair housing and equal opportunity laws.

Offering Memorandum Presented By:

Peter Braunworth

Principal Broker

peter@cohocommercial.com

971.707.4646 x103

cohocommercial.com

Jeff Corner

Principal Broker

jeff@cohocommercial.com

503.584.1838



PROPERTY INFORMATION

Section 1

Offering Memorandum Presented By:

Peter Braunworth

Principal Broker

peter@cohocommercial.com

971.707.4646 x103

cohocommercial.com

Jeff Corner

Principal Broker

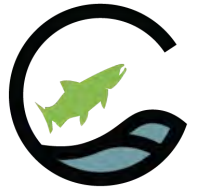
jeff@cohocommercial.com

503.584.1838

**Goho**
COMMERCIAL

WaterPlace

500 Liberty Street SE, Suite 400, Salem, OR 97301



WaterPlace Overview

Welcome to WaterPlace - Salem and the Willamette Valley's finest and most distinctive office building. Featuring best-in-class design, finishes, functionality, amenities and location, it is truly in a class by itself, setting the benchmark standard by which all other professional office buildings in the market are compared. From its one-of-a-kind setting along the banks of beautiful Pringle Creek, tenants are treated to unmatched views of the surrounding natural habitat, downtown Salem, State Capitol, Civic Center, Salem Library and Riverfront Park and Amphitheater to the west.

With a prime location at the southern edge of downtown Salem, WaterPlace tenants enjoy convenient walking-distance access to the best of downtown eateries, shopping and services. Salem Health-Hospital is a short 5-minute walk to the east, making the location ideal for medical service providers. The State Capitol and numerous government and judiciary buildings are all easily accessible.

WaterPlace was the first, and as yet only, privately developed building in Salem to achieve LEED Platinum status for sustainability. Tenants benefit from increased energy efficiencies, large amounts of natural light, operable windows, higher indoor air quality, a shower facility and bike storage and a host of other sustainable building features and amenities.

Additional tenant amenities include abundant free client parking, access to a roof-top patio, a creekside plaza and the new home of Cascadia Pizza Company restaurant.

Now available: Suite 400, 5,099 SF of medical or professional office space, located on the 4th floor Canopy level.

Offering Memorandum Presented By:

Peter Braunworth

Principal Broker

peter@cohocommercial.com

971.707.4646 x103

cohocommercial.com

Jeff Corner

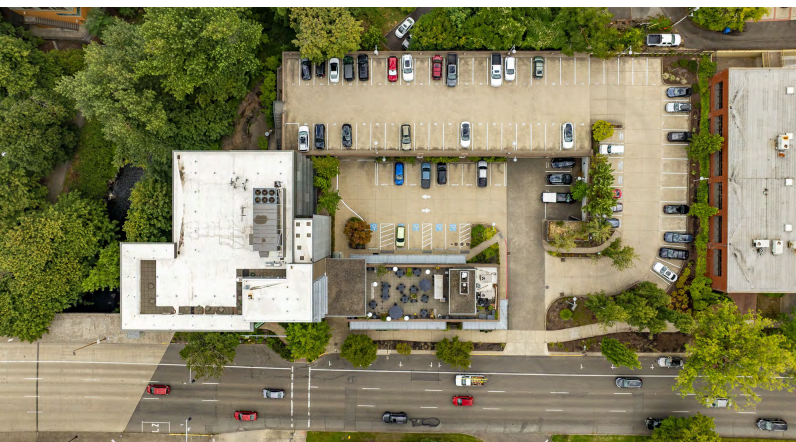
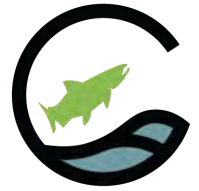
Principal Broker

jeff@cohocommercial.com

503.584.1838

WaterPlace

500 Liberty Street SE, Suite 400, Salem, OR 97301



Location Information

Building Name	WaterPlace
Street Address	500 Liberty Street SE, Suite 400
City, State, Zip	Salem, OR 97301
County	Marion

Building Information

Building Class	A
Year Built	2010
Building Size	41,400 Sq.Ft.
Number of Floors	6
Tenancy	9 Tenant Suites
Zoning	CB - Central Business
Parking	3:1,000; 1:1,000 free with additional at \$75/m.

WaterPlace Highlights

- Completed in 2010, WaterPlace is Salem's only privately developed LEED Platinum designated office building.
- Quality of life and quality of space is paramount and evident in every facet of the design and function of the building and grounds. The abundant use of wood, expansive glass, stone, metal, tile and precast concrete creates a natural, serene and inviting atmosphere. Abundant daylight, fresh air flow, sophisticated climate controls and expansive views from every space makes for a daily quality of tenant life that is second to none.
- On-site amenities and services greatly enhance the quality of life at WaterPlace. Enjoy such features as daily security officers, showers, bike storage, covered parking, a beautiful creekside patio, mature and well-kept landscaping, access to the roof-top patio and an excellent on-site restaurant.
- A property of unique distinction and quality is reflected in the diverse and prestigious tenant roster. Join such names as CBJTwo Architects, New York Life Securities, Fidelity National Title, Wells Fargo Advisors, WaterPlace Dental, U.S. Senator Jeff Merkley, Cook Law Firm, Mind, Heart, Play Therapy, Coho Realty and Cascadia Pizza Co.

Offering Memorandum Presented By:

Peter Braunworth

Principal Broker

peter@cohocommercial.com

971.707.4646 x103

cohocommercial.com

Jeff Corner

Principal Broker

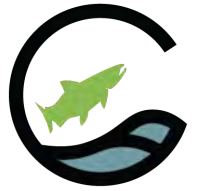
jeff@cohocommercial.com

503.584.1838

Lease Space

WaterPlace

500 Liberty Street SE, Suite 400, Salem, OR 97301



Lease Information

Lease Type:	Full Service, included janitorial	Lease Term:	5 years +
Total Space:	1,586 – 5,099 SF	Lease Rate:	\$35.40 SF/yr. (\$2.95/SF/mo.)

Available Spaces

Description

With a spectacular 4th Floor Canopy Level location, enjoying 360-degree views and directly over Pringle Creek, Suite 400 is a beautifully finished, turn-key medical office space. Featuring 10' ceilings, incredible views, fresh air, abundant natural light and privacy. The suite is outfitted with a spacious waiting area, a large, multi-station reception, seven (7) exam/treatment rooms, six (6) private offices, large kitchen/break room, two (2) storage rooms and one (1) private (in suite) restroom. Suitable for most medical practitioners or conversion to a non-medical professional office.

Offering Memorandum Presented By:

Peter Braunworth

Principal Broker

peter@cohocommercial.com

971.707.4646 x103

cohocommercial.com

Jeff Corner

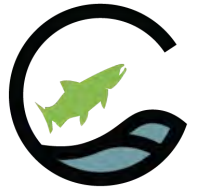
Principal Broker

jeff@cohocommercial.com

503.584.1838

WaterPlace

500 Liberty Street SE, Suite 400, Salem, OR 97301



Offering Memorandum Presented By:

Peter Braunworth

Principal Broker

peter@cohocommercial.com

971.707.4646 x103

cohocommercial.com

Jeff Corner

Principal Broker

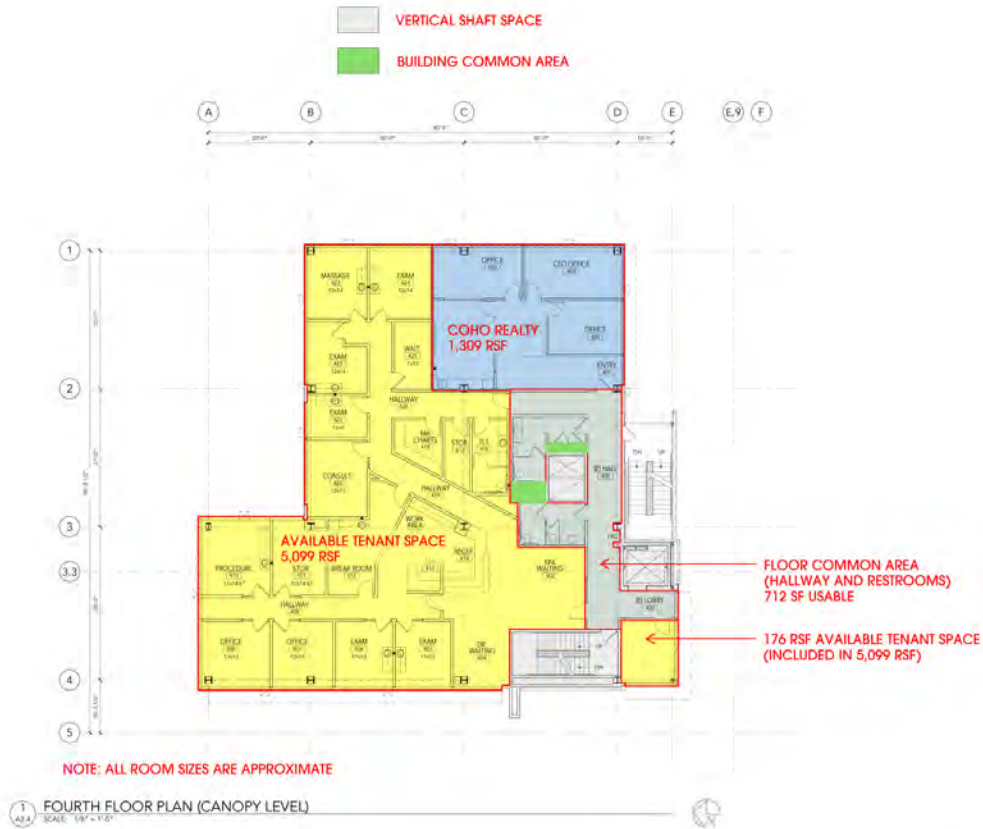
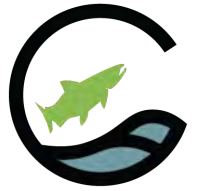
jeff@cohocommercial.com

503.584.1838

As Built

WaterPlace

500 Liberty Street SE, Suite 400, Salem, OR 97301



ISSUE DATE - 07/16/2025

CBTWO ARCHI TECTS,LLC
NOT FOR CONSTRUCTION
TENANT LAYOUT AT WaterPlace 500 Liberty Street SE, Salem, OR 97301
FOURTH FLOOR PLAN
A2.4

Offering Memorandum Presented By:

Peter Braunworth

Principal Broker

peter@cohocommercial.com

971.707.4646 x103

cohocommercial.com

Jeff Corner

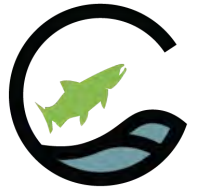
Principal Broker

jeff@cohocommercial.com

503.584.1838

WaterPlace

500 Liberty Street SE, Suite 400, Salem, OR 97301



OPTION B

ISSUE DATE - 12/03/2025

A2.4

CBTWO ARCHI TECTS.	
NOT FOR CONSTRUCTION	
TENANT LAYOUT AT WaterPlace 500 Liberty Street SE, Salem, OR 97301	
Rev	Description
1	Initial
2	Revised
3	Revised
4	Revised
5	Revised
6	Revised
7	Revised
8	Revised
9	Revised
10	Revised
11	Revised
12	Revised
13	Revised
14	Revised
15	Revised
16	Revised
17	Revised
18	Revised
19	Revised
20	Revised
21	Revised
22	Revised
23	Revised
24	Revised
25	Revised
26	Revised
27	Revised
28	Revised
29	Revised
30	Revised
31	Revised
32	Revised
33	Revised
34	Revised
35	Revised
36	Revised
37	Revised
38	Revised
39	Revised
40	Revised
41	Revised
42	Revised
43	Revised
44	Revised
45	Revised
46	Revised
47	Revised
48	Revised
49	Revised
50	Revised
51	Revised
52	Revised
53	Revised
54	Revised
55	Revised
56	Revised
57	Revised
58	Revised
59	Revised
60	Revised
61	Revised
62	Revised
63	Revised
64	Revised
65	Revised
66	Revised
67	Revised
68	Revised
69	Revised
70	Revised
71	Revised
72	Revised
73	Revised
74	Revised
75	Revised
76	Revised
77	Revised
78	Revised
79	Revised
80	Revised
81	Revised
82	Revised
83	Revised
84	Revised
85	Revised
86	Revised
87	Revised
88	Revised
89	Revised
90	Revised
91	Revised
92	Revised
93	Revised
94	Revised
95	Revised
96	Revised
97	Revised
98	Revised
99	Revised
100	Revised

Offering Memorandum Presented By:

Peter Braunworth

Principal Broker

peter@cohocommercial.com

971.707.4646 x103

cohocommercial.com

Jeff Corner

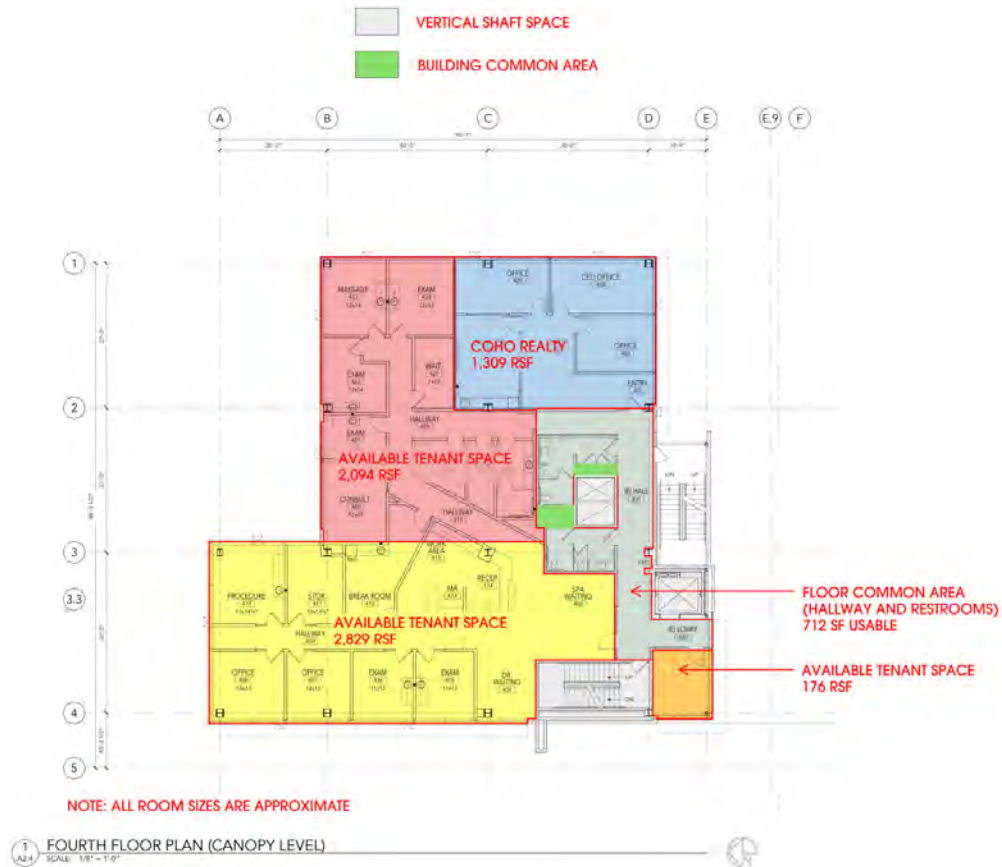
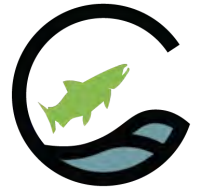
Principal Broker

jeff@cohocommercial.com

503.584.1838

WaterPlace

500 Liberty Street SE, Suite 400, Salem, OR 97301



CBTWO
ARCHI
TECTS

NOT FOR
CONSTRUCTION

TENANT LAYOUT AT
waterPlace
500 Liberty Street SE, Salem, OR 97301

Rev	Description	Project No.	Date

FOURTH FLOOR
PLAN

A2.4

ISSUE DATE - 12/03/2025

Offering Memorandum Presented By:

Peter Braunworth

Principal Broker

peter@cohocommercial.com

971.707.4646 x103

cohocommercial.com

Jeff Corner

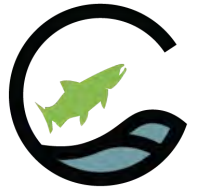
Principal Broker

jeff@cohocommercial.com

503.584.1838

WaterPlace

500 Liberty Street SE, Suite 400, Salem, OR 97301



360° VIRTUAL TOUR

Space Highlights

- Tastefully finished and thoughtfully designed throughout, Suite 400 features a turn-key ready opportunity for a medical practice – a rare opportunity in the marketplace.
- With offices and exam spaces encompassing all four building elevations, the space enjoys truly exceptional views, natural lighting, fresh air and a professional ambiance that is unrivaled in the local office market.
- Large private offices and exam/treatment rooms provide for maximum flexibility of uses and needs.
- Conversion to non-medical professional office use and demising would be considered, subject to acceptable negotiable terms.



Offering Memorandum Presented By:

Peter Braunworth

Principal Broker

peter@cohocommercial.com

971.707.4646 x103

cohocommercial.com

Jeff Corner

Principal Broker

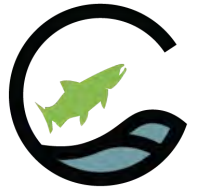
jeff@cohocommercial.com

503.584.1838

Additional Photos

WaterPlace

500 Liberty Street SE, Suite 400, Salem, OR 97301



Offering Memorandum Presented By:

Peter Braunworth

Principal Broker

peter@cohocommercial.com

971.707.4646 x103

cohocommercial.com

Jeff Corner

Principal Broker

jeff@cohocommercial.com

503.584.1838



LOCATION INFORMATION

Section 2

Offering Memorandum Presented By:

Peter Braunworth

Principal Broker

peter@cohocommercial.com

971.707.4646 x103

cohocommercial.com

Jeff Corner

Principal Broker

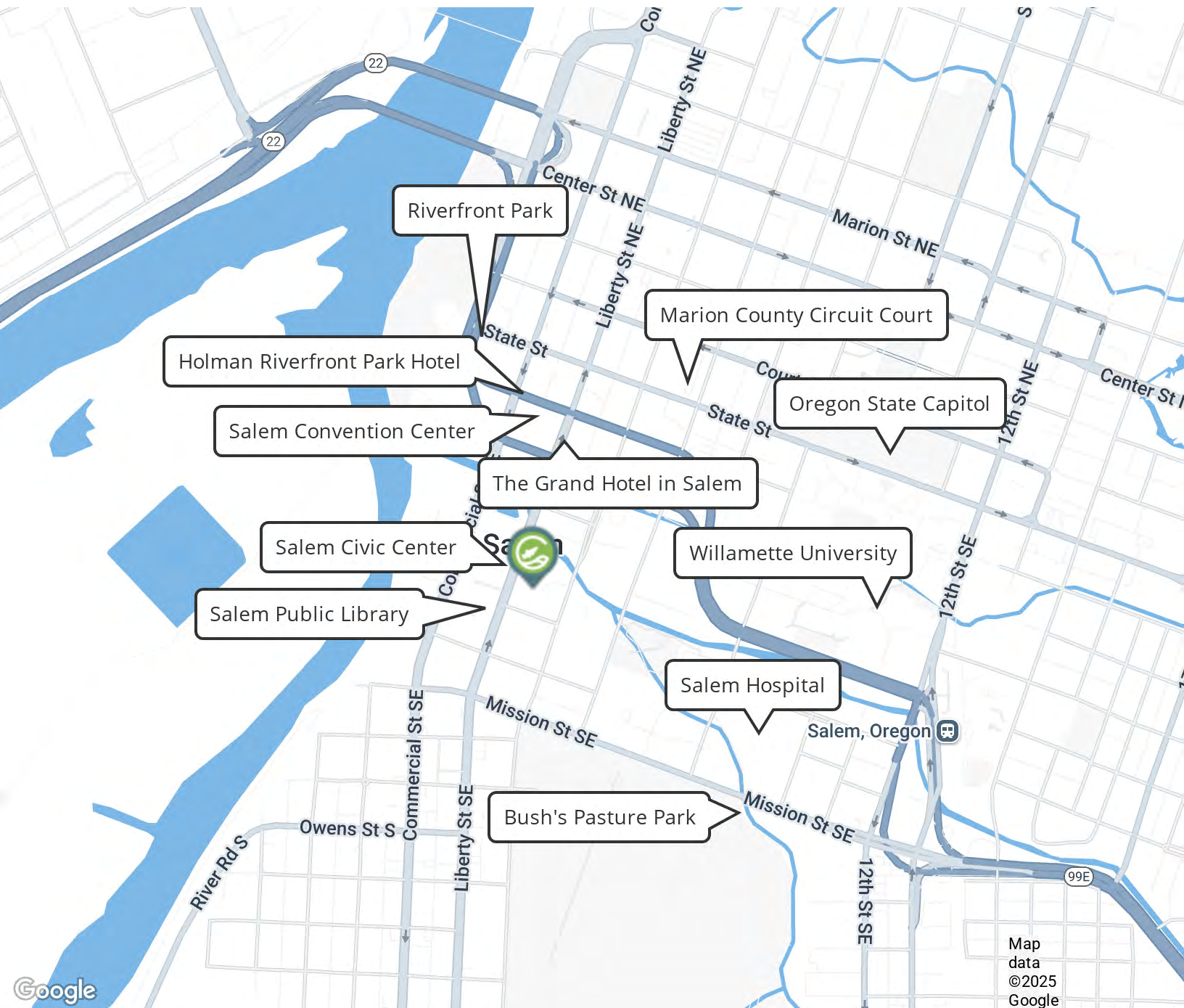
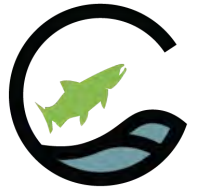
jeff@cohocommercial.com

503.584.1838



WaterPlace

500 Liberty Street SE, Suite 400, Salem, OR 97301



Offering Memorandum Presented By:

Peter Braunworth

Principal Broker

peter@cohocommercial.com

971.707.4646 x103

cohocommercial.com

Jeff Corner

Principal Broker

jeff@cohocommercial.com

503.584.1838



DEMOGRAPHICS

Section 3

Offering Memorandum Presented By:

Peter Braunworth

Principal Broker

peter@cohocommercial.com

971.707.4646 x103

cohocommercial.com

Jeff Corner

Principal Broker

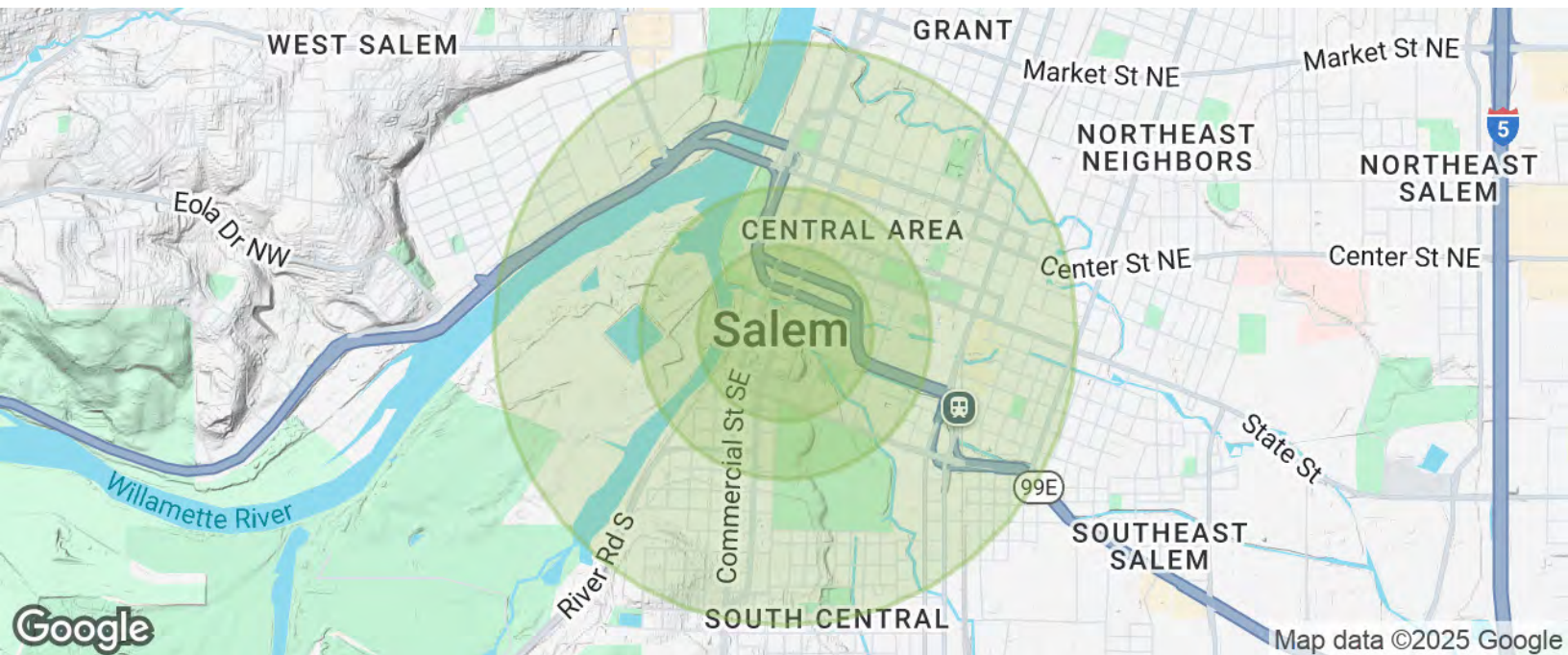
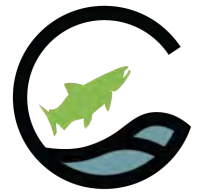
jeff@cohocommercial.com

503.584.1838



WaterPlace

500 Liberty Street SE, Suite 400, Salem, OR 97301



Population	0.3 Miles	0.5 Miles	1 Mile
Total Population	747	2,007	9,814
Average Age	36	37	38
Average Age (Male)	36	36	37
Average Age (Female)	36	37	38

Households & Income	0.3 Miles	0.5 Miles	1 Mile
Total Households	273	752	3,910
# of Persons per HH	2.7	2.7	2.5
Average HH Income	\$83,484	\$82,196	\$76,075
Average House Value	\$379,610	\$414,108	\$412,493

Demographics data derived from AlphaMap

Offering Memorandum Presented By:

Peter Braunworth
Principal Broker
peter@cohocommercial.com
971.707.4646 x103
cohocommercial.com

Jeff Corner
Principal Broker
jeff@cohocommercial.com
503.584.1838