



FOR LEASE GROUND LEASE OR BUILD TO SUIT

628 & 636 W. Main Street

WWW.PIRIEPROPERTIES.COM



LOCATION:..... Downtown Merced on Main Street
628 & 636 W. Main Street, Merced, CA

LEASE AREA:Up to approximately 17,500 square feet

DESCRIPTION:.....C-1 Zoning. Lessee to confirm with Merced County

LEASE RATE:..... Contact Broker

APN'S:.....031-134-04 & 031-134-03

COMMENTS:.....Located in the heart of Downtown, next to several established fine dining restaurants, hotels, retail and professional offices. Ownership is seeking a national tenant, but is open to creative uses of the property. Reach out to discuss further details.

FOR INFORMATION:

CHAD PIRIE
559.287.7237
chad@pirieproperties.com
DRE #01950267

DAVE PIRIE
559.308.4141
dave@pirieproperties.com
DRE #02216037

This information has been obtained from sources we believe reliable. We have not verified it and make no guarantee, warranty, or representation about it. Any projections, assumptions, or estimates used are for example only. You and your advisors should conduct an independent, careful investigation of the property to determine to your satisfaction the suitability of the property for your needs.



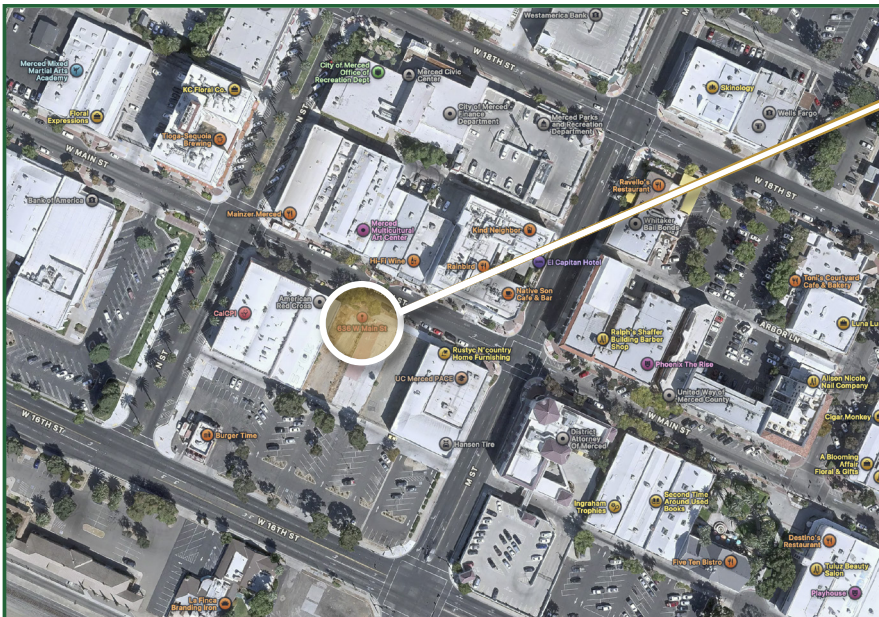
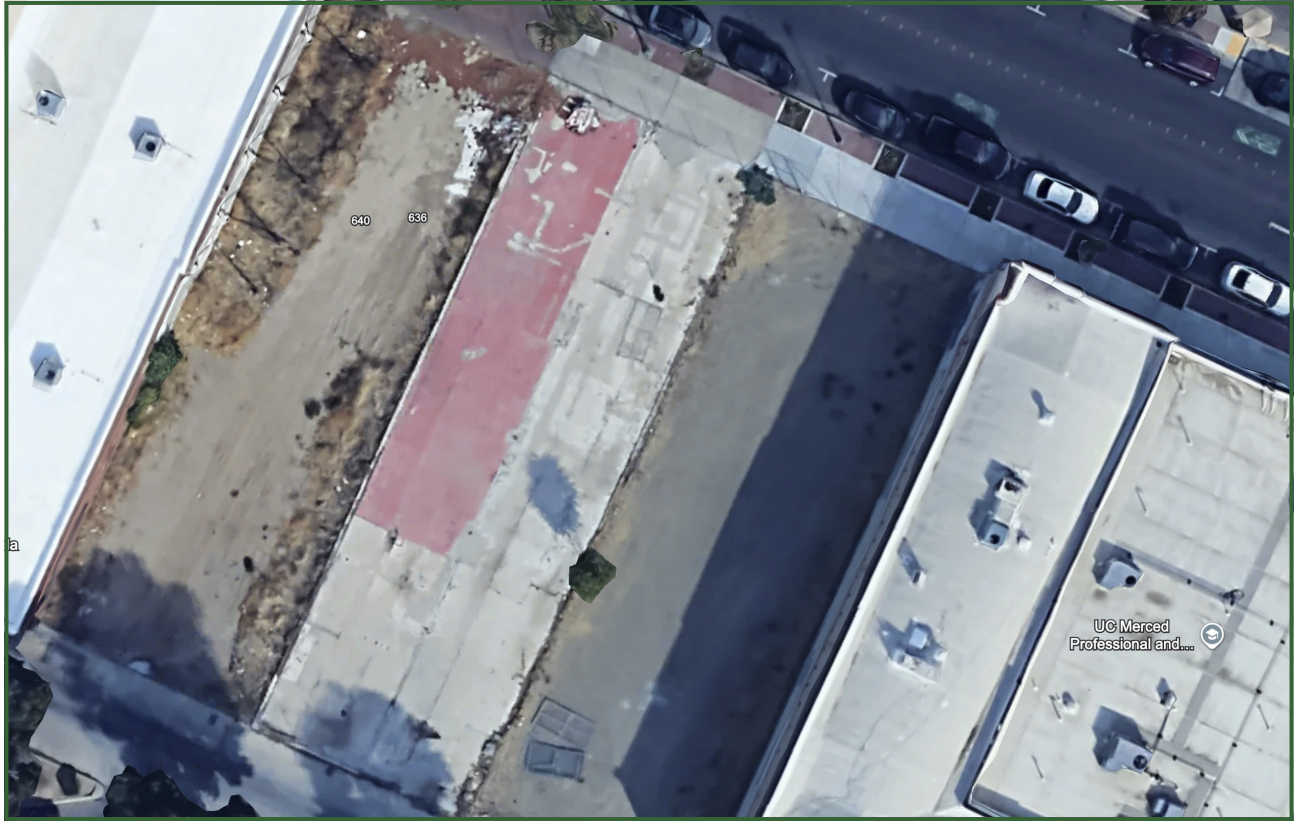
FOR LEASE

GROUND LEASE OR BUILD TO SUIT

CHAD PIRIE | 559.287.7237 | chad@pirieproperties.com | DRE #01950267
DAVE PIRIE | 559.308.4141 | dave@pirieproperties.com | DRE #02216037

628 & 636 W. Main Street

WWW.PIRIEPROPERTIES.COM



PROPERTY LOCATION:
628 & 636 W. Main Street