

FOR LEASE

2,131± Sq. Ft. Office Space



203 Court Street, Woodland, CA

Victorian Home Centrally Located in Woodland
Offers 3 Private Offices
Joined Rooms Could Be Reception and Conference Room
2 Restrooms and Kitchen
Driveway Off Cleveland Street Offers Off Street Parking
Close to Yolo County Superior Courthouse
& Yolo County Offices

Lease Rate: \$2,557.00/Month

SALLING PROPERTIES INC.

DRE No. 02201437

REAL ESTATE SALES, LEASING & PROPERTY MANAGEMENT

20 N. East Street, Suite 101, Woodland, CA 95776

Phone: (530) 666-5485 Website: www.Sheffield-RealEstate.com

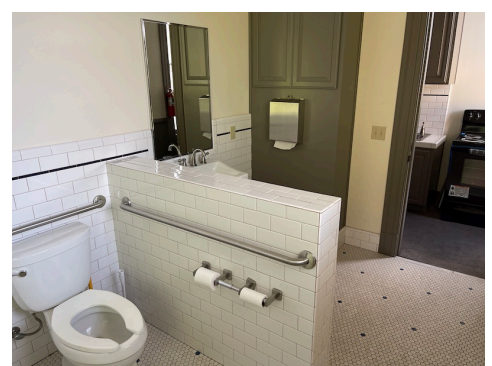
E-Mail: sallingproperties@kathysallingrealtor.com

Listing Agent: **Bryan Sheffield, Agent**
CalBRE: **02065645**
Phone: **(530) 219-0281**
E-Mail: **bsheffield100@gmail.com**

The information contained herein has been obtained from sources we deem reliable. We cannot, however, assume responsibility for its accuracy.

2,131± Sq. Ft. Office Space

203 Court Street • Woodland, CA



SALLING PROPERTIES INC.

DRE No. 02201437

REAL ESTATE SALES, LEASING & PROPERTY MANAGEMENT

20 N. East Street, Suite 101, Woodland, CA 95776

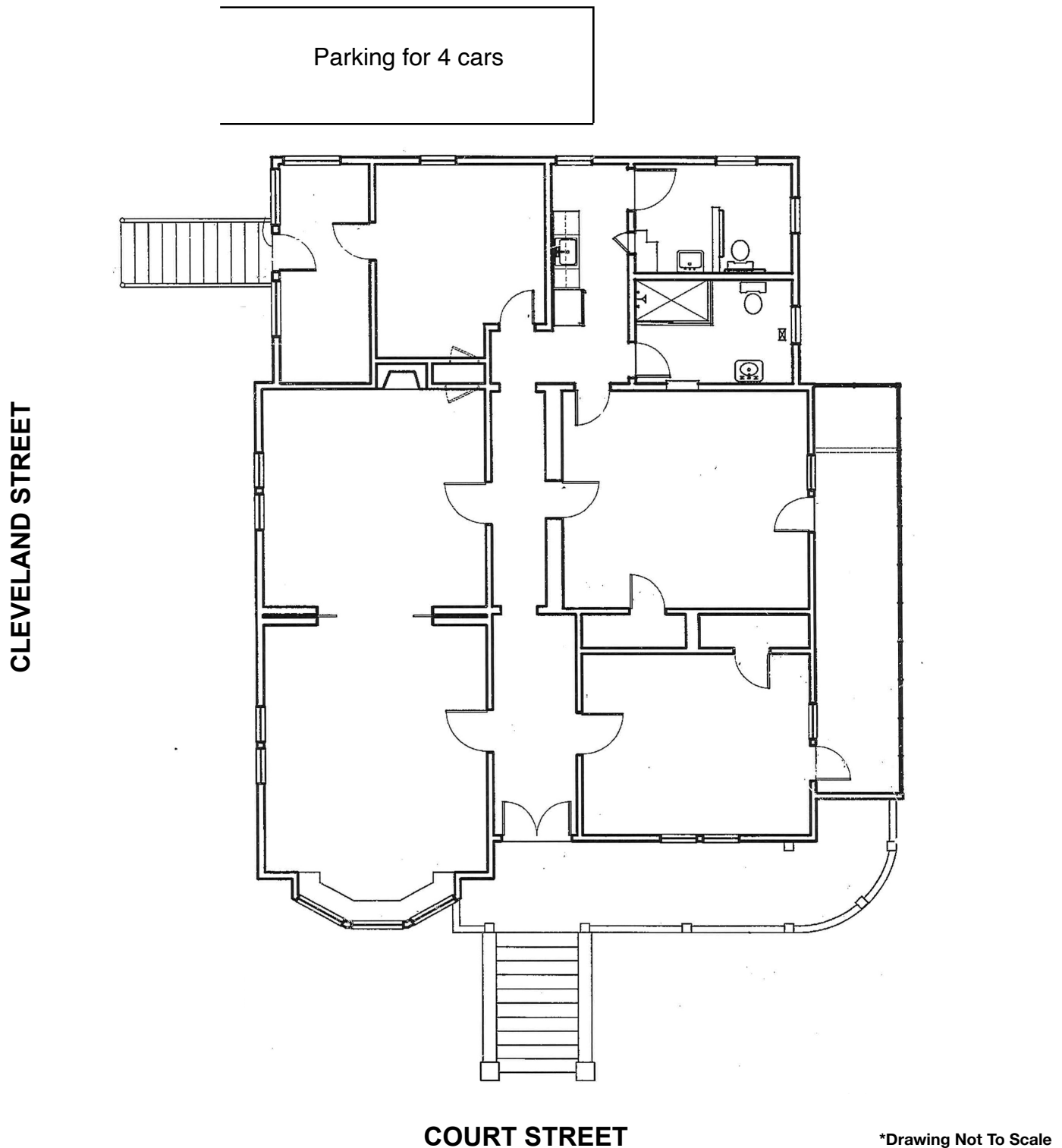
Phone: (530) 666-5485 Website: www.Sheffield-RealEstate.com

E-Mail: sallingproperties@kathysallingrealtor.com

The information contained herein has been obtained from sources we deem reliable. We cannot, however, assume responsibility for its accuracy.

Listing Agent: **Bryan Sheffield, Agent**
CalBRE: **02065645**
Phone: **(530) 219-0281**
E-Mail: **bsheffield100@gmail.com**

2,131± Sq. Ft. Office Space 203 Court Street • Woodland, CA



SALLING PROPERTIES INC.

DRE No. 02201437

REAL ESTATE SALES, LEASING & PROPERTY MANAGEMENT

20 N. East Street, Suite 101, Woodland, CA 95776

Phone: (530) 666-5485 Website: www.Sheffield-RealEstate.com

E-Mail: sallingproperties@kathysallingrealtor.com

Listing Agent: **Bryan Sheffield, Agent**
CalBRE: **02065645**
Phone: **(530) 219-0281**
E-Mail: **bsheffield100@gmail.com**

The information contained herein has been obtained from sources we deem reliable. We cannot, however, assume responsibility for its accuracy.