

629 SE Central Parkway,
Stuart, FL 34994

CENTRAL PARKWAY
BUSINESS CENTER UNIT



FOR **SALE**



ALBERT BROWN
Sales Associate
T: 772.631.7989
E: albert@albertbrownre.com

1,880 SF

Stuart, FL

309 SE Osceola Street #104 • Stuart, FL 34994 • 772.223.3646 • florida-commercial.net

©Florida Commercial 2021 • This offering is subject to errors, prior to sale/lease, withdrawal, or change in price, terms or conditions without notice.

EXECUTIVE SUMMARY

629 SE Central Parkway, Stuart, FL 34994

CENTRAL PARKWAY BUSINESS CENTER UNIT

SPECS

Unit Size: 1,880 SF
Zoning: Office / Industrial Flex
Price: \$470,000
Year Built: 2002

PROPERTY OVERVIEW

Located in the prestigious Central Parkway Business Center, this pristine flex unit offers the perfect balance of professional office and industrial utility. The current layout includes four private offices and two restrooms, with plumbing already integrated into two of the suites. An expansive open area provides the flexibility to create additional workstations or further customize the floor plan to fit your specific needs.

The rear of the unit features a dedicated warehouse space with two roll up doors for seamless operations. Whether you need to expand the administrative area or grow your storage capacity, this space adapts to your business. Positioned between Kanner Highway and US1, you are centrally located among leading professionals and minutes from major retailers.



ALBERT BROWN
Sales Associate
T: 772.631.7989
E: albert@albertbrownre.com

1,880 SF

Stuart, FL



FC FLORIDA
COMMERCIAL
REAL ESTATE COMPANY



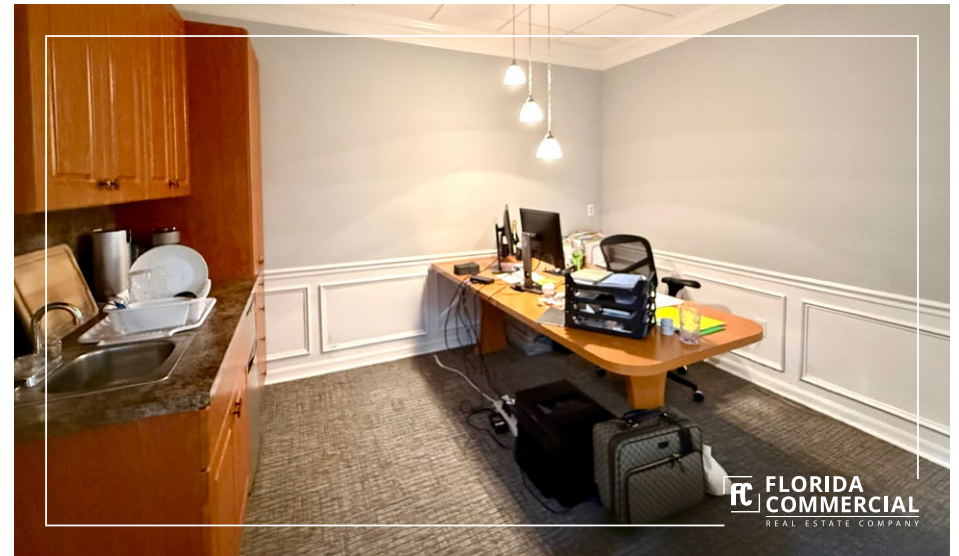
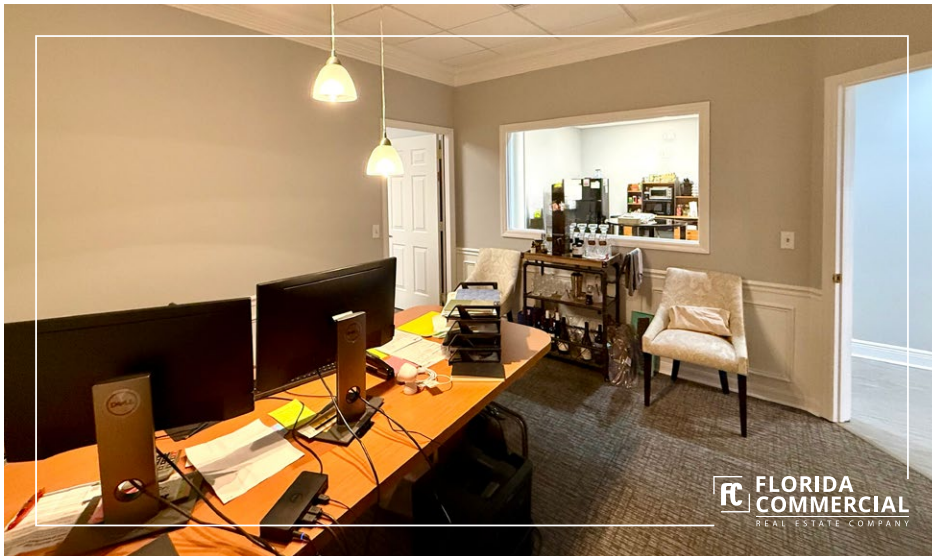
ALBERT BROWN
Sales Associate
T: 772.631.7989
E: albert@albertbrownre.com

1,880 SF

Stuart, FL

309 SE Osceola Street #104 • Stuart, FL 34994 • 772.223.3646 • florida-commercial.net

©Florida Commercial 2021 • This offering is subject to errors, prior to sale/lease, withdrawal, or change in price, terms or conditions without notice.



FC FLORIDA
COMMERCIAL
REAL ESTATE COMPANY



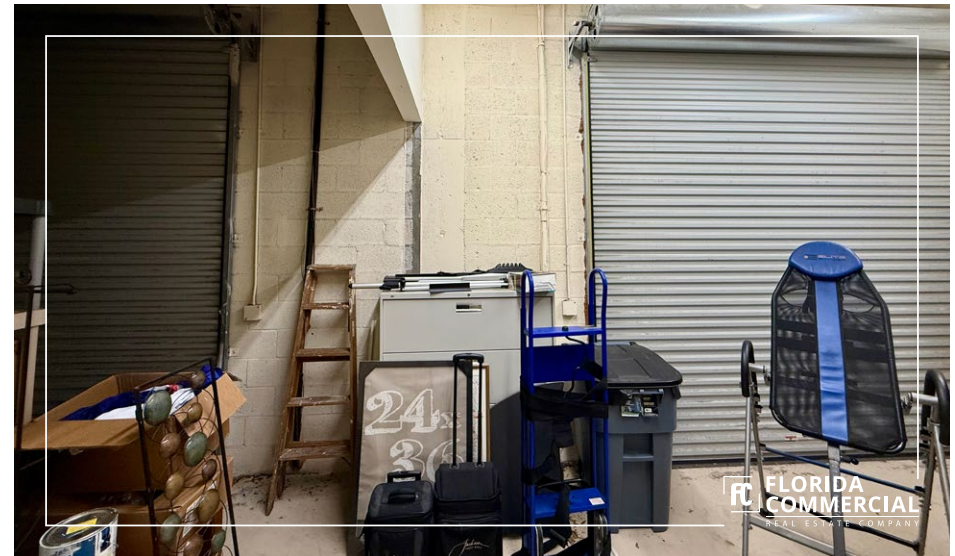
ALBERT BROWN
Sales Associate
T: 772.631.7989
E: albert@albertbrownre.com

1,880 SF

Stuart, FL

309 SE Osceola Street #104 • Stuart, FL 34994 • 772.223.3646 • florida-commercial.net

©Florida Commercial 2021 • This offering is subject to errors, prior to sale/lease, withdrawal, or change in price, terms or conditions without notice.



FC FLORIDA
COMMERCIAL
REAL ESTATE COMPANY



ALBERT BROWN
Sales Associate
T: 772.631.7989
E: albert@albertbrownre.com

1,880 SF

Stuart, FL

309 SE Osceola Street #104 • Stuart, FL 34994 • 772.223.3646 • florida-commercial.net

©Florida Commercial 2021 • This offering is subject to errors, prior to sale/lease, withdrawal, or change in price, terms or conditions without notice.



FC FLORIDA COMMERCIAL
REAL ESTATE COMPANY



ALBERT BROWN
Sales Associate
T: 772.631.7989
E: albert@albertbrownre.com

1,880 SF

Stuart, FL

309 SE Osceola Street #104 • Stuart, FL 34994 • 772.223.3646 • florida-commercial.net

©Florida Commercial 2021 • This offering is subject to errors, prior to sale/lease, withdrawal, or change in price, terms or conditions without notice.

MAPS & REPORT

629 SE Central Parkway, Stuart, FL 34994 | CENTRAL PARKWAY BUSINESS CENTER UNIT



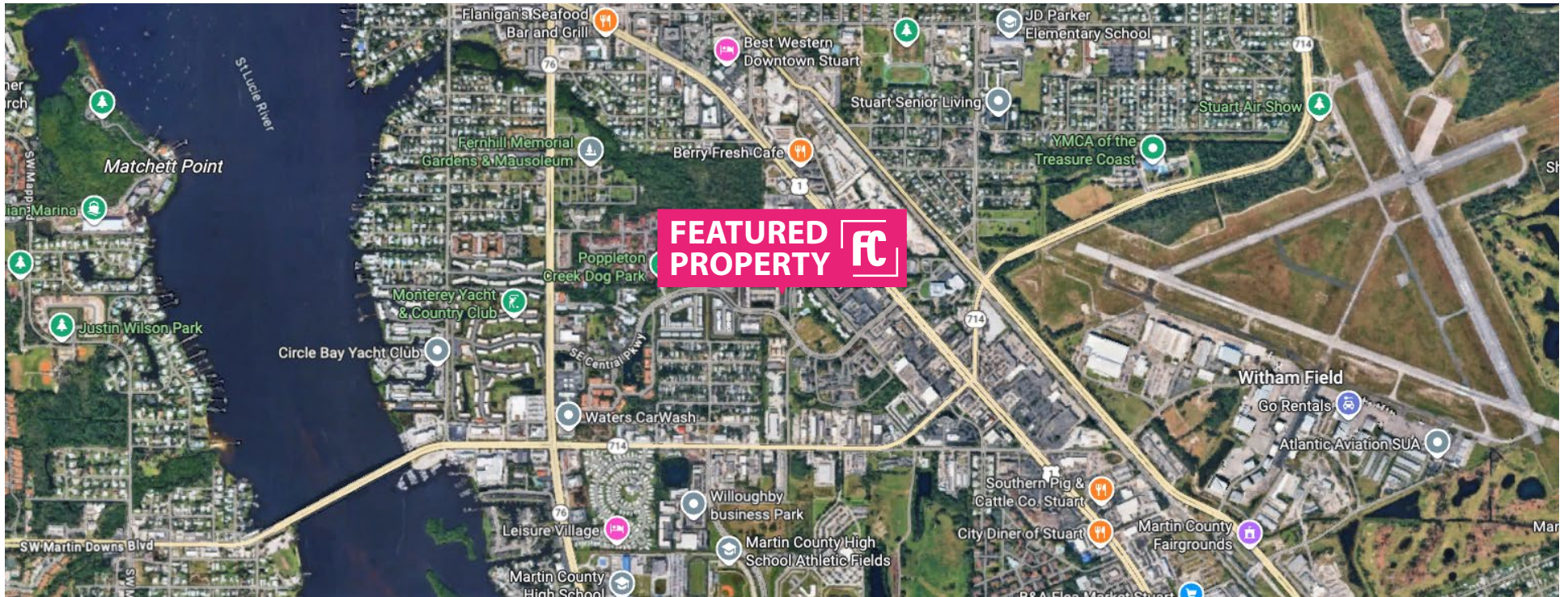
POPULATION

	1 MILE	3 MILES	5 MILES
Population	5,912	46,027	95,498
Median age	42.8	47.8	47.9



HOUSEHOLDS & INCOME

	1 MILE	3 MILES	5 MILES
Total households	2,583	19,939	40,283
# of Persons per HH	2.3	2.3	2.4
Average HH income	\$49,202	\$72,031	\$79,571



ALBERT BROWN
Sales Associate
T: 772.631.7989
E: albert@albertbrownre.com

1,880 SF

Stuart, FL

AERIAL

629 SE Central Parkway, Stuart, FL 34994 | CENTRAL PARKWAY BUSINESS CENTER UNIT



ALBERT BROWN
Sales Associate
T: 772.631.7989
E: albert@albertbrownre.com

1,880 SF

Stuart, FL

309 SE Osceola Street #104 • Stuart, FL 34994 • 772.223.3646 • florida-commercial.net

©Florida Commercial 2021 • This offering is subject to errors, prior to sale/lease, withdrawal, or change in price, terms or conditions without notice.