

1.3ac - Gordon Terry Parkway

GORDON TERRY PARKWAY | TRINITY, AL 35673

FOR SALE



PROPERTY DESCRIPTION

1.3 acres located on Gordon Terry Parkway in Trinity. Just minutes from Highway 20 and Old Moulton Road.

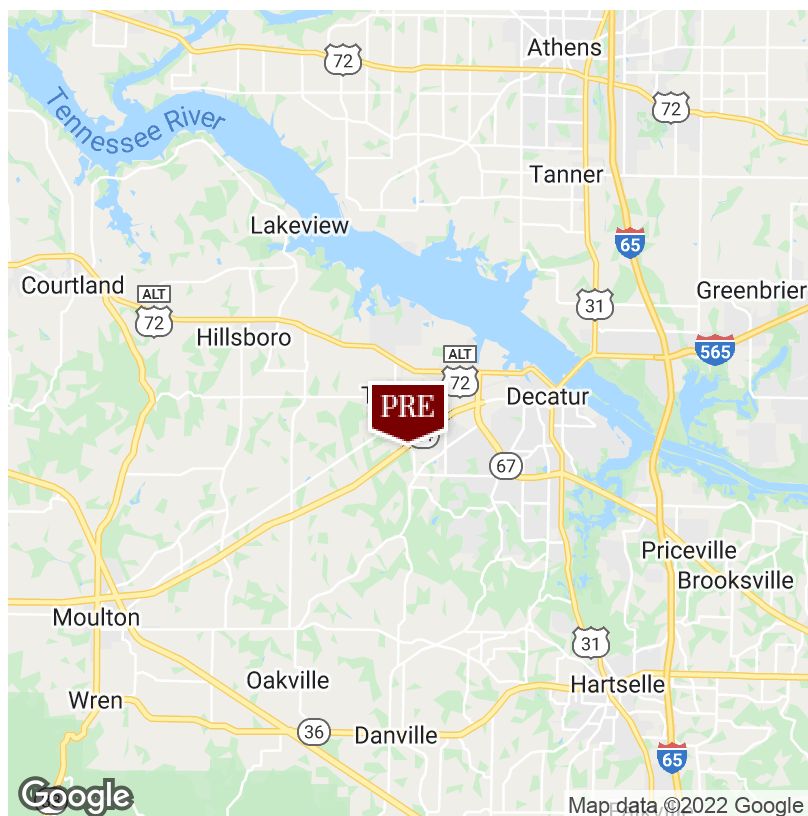
PROPERTY HIGHLIGHTS

- Development acreage with 310' of frontage on Gordon Terry Parkway
- Located on lighted corner of Gordon Terry Parkway and West Morgan Road
- In close proximity to Great Southern Engineering, West Morgan schools, Ponderosa Furniture, and more

OFFERING SUMMARY

Sale Price:	\$299,000
Lot Size:	1.3 Acres
Zoning	County

DEMOGRAPHICS	1 MILE	5 MILES	10 MILES
Total Households	210	11,973	36,954
Total Population	571	29,743	92,947
Average HH Income	\$66,319	\$57,769	\$55,278



Jeff Parker
Broker
256.353.1112
jparker@parker-realestate.com

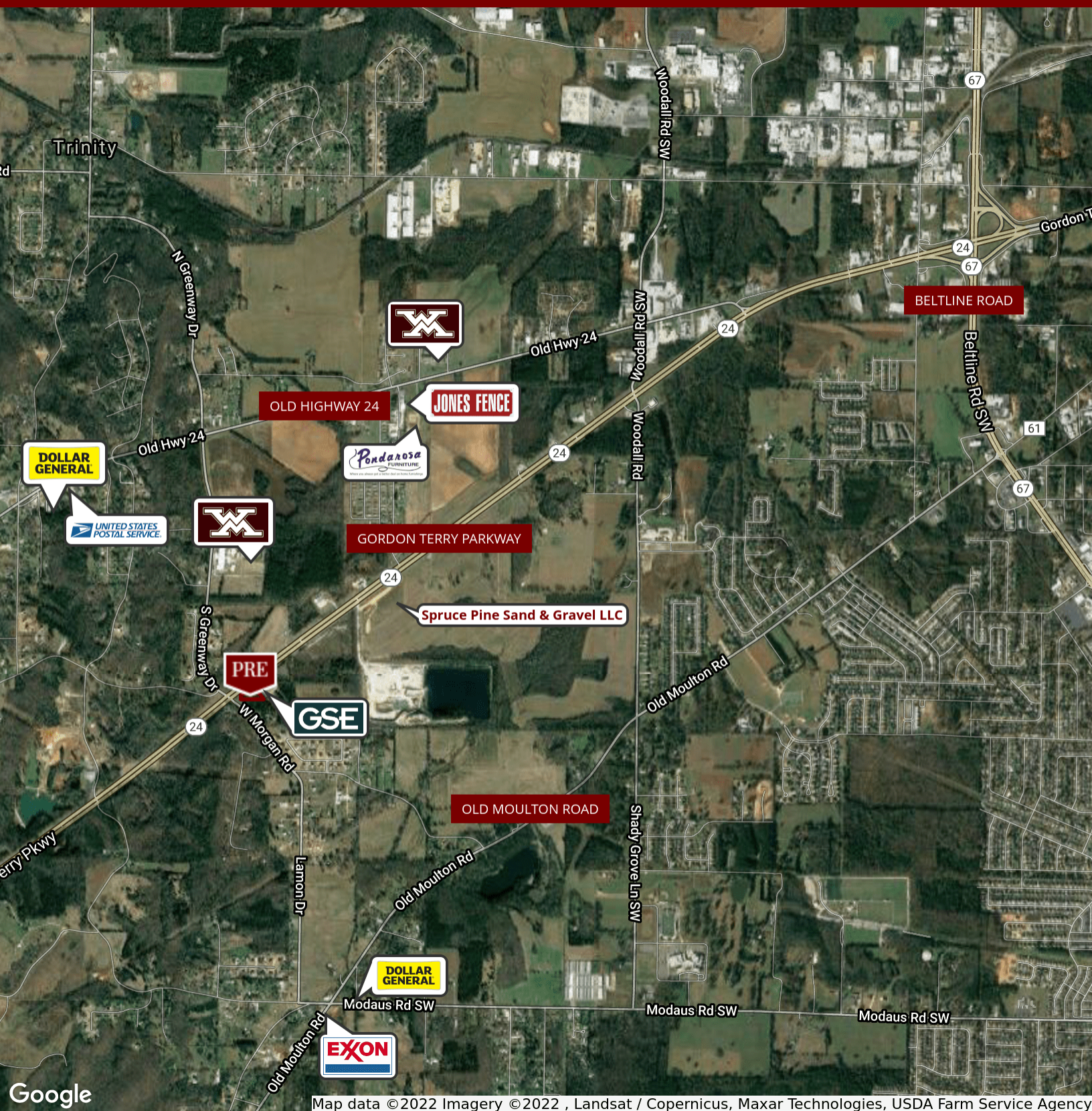
Jackson Parker
Associate Broker
256.353.1112
jackson@parker-realestate.com

Parker
Real Estate LLC

1.3ac - Gordon Terry Parkway

GORDON TERRY PARKWAY | TRINITY, AL 35673

FOR SALE



Jeff Parker

Broker

256.353.1112

jparker@parker-realestate.com

Jackson Parker

Associate Broker

256.353.1112

jackson@parker-realestate.com

Parker
Real Estate