

1,200 SF OFFICE
NOW AVAILABLE
FOR LEASE

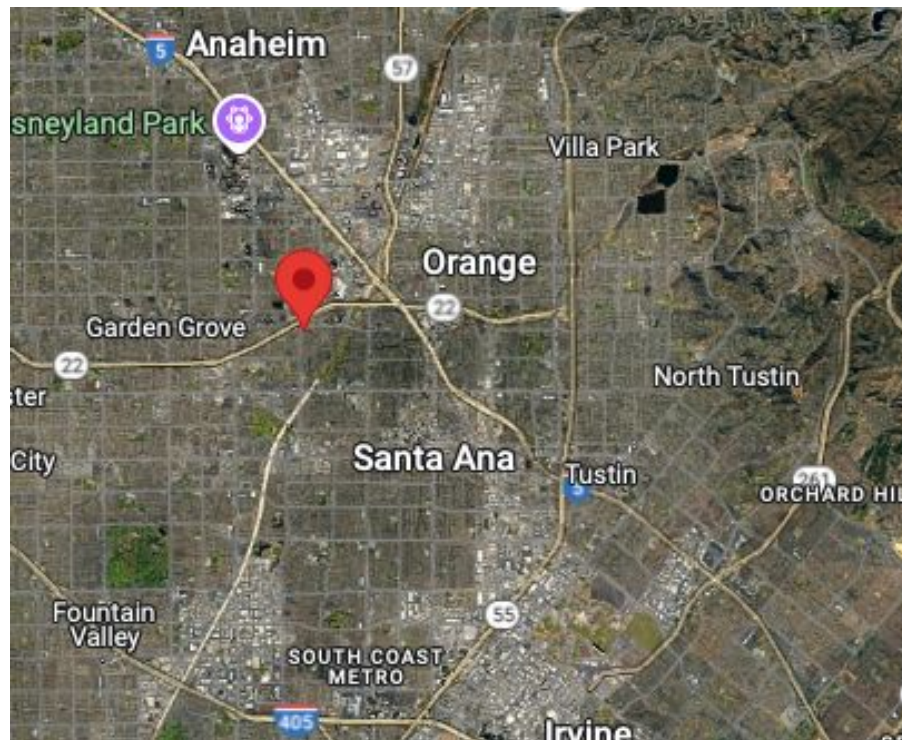
EXECUTIVE PLAZA

13252 Garden Grove Blvd. 216
Garden Grove, CA



PROPERTY HIGHLIGHTS:

- Fully built-out office
- Plug and play opportunity
- Furniture included
- Recently remodeled
- Includes electricity
- Competitive lease rate
- Convenient Central OC location
- Professional setting
- Efficient floor plan
- Easy access to 22, 57, and 5 Fwy
- Covered parking
- Elevator served



Leasing Contacts:

Justin Hugron, CCIM

714.642.7690

justin@ashwillassociates.com

DRE# 02069980 Corp.DRE# 01291393

William Hugron, CCIM, SIOR

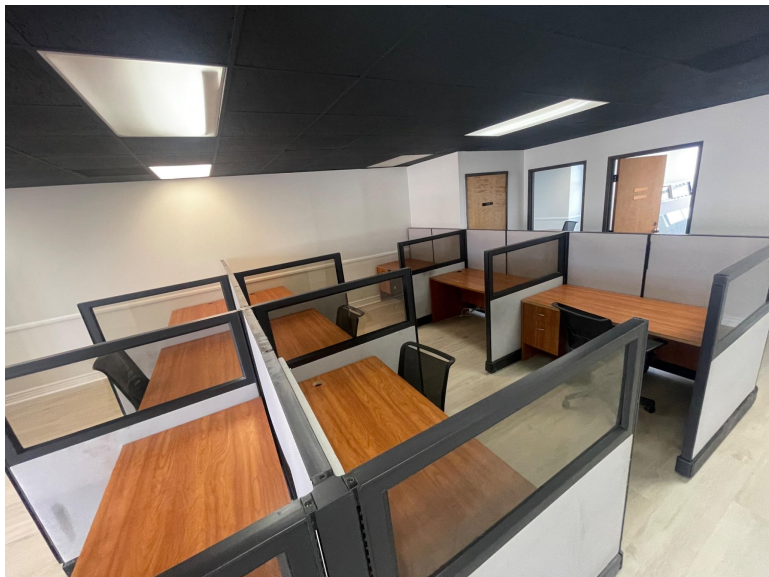
714.356.7823

william@ashwillassociates.com

DRE# 00803524 Corp.DRE# 01291393

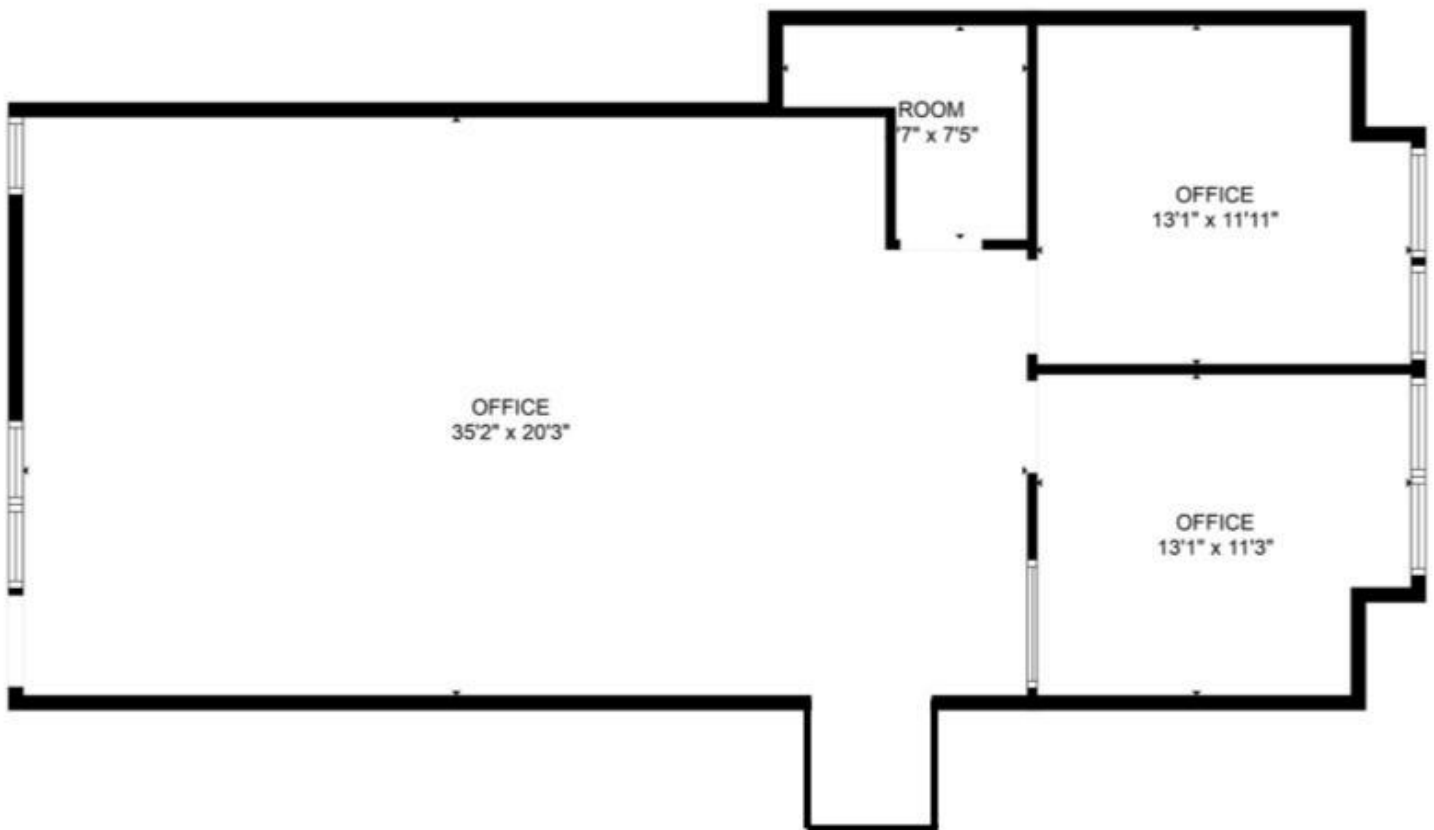
**Ashwill
Associates**
COMMERCIAL REAL ESTATE

INTERIOR PHOTOS



13252 Garden Grove Blvd. Suite 216

FLOOR PLAN & SUITE NOTES



Suite 216

- 1,200 SF
- Large open workspace with workstations
- 2 Private window offices
- IT Room
- Electrical Room

PHOTOS



FOR MORE INFO
OR TO TOUR:

Justin Hugron, CCIM

949.216.0469

justin@ashwillassociates.com

DRE# 02069980 Corp.DRE# 01291395

William Hugron, CCIM, SIOR

714.356.7823

william@ashwillassociates.com

DRE# 00803524 Corp.DRE# 01291393

**Ashwill
Associates**
COMMERCIAL REAL ESTATE