

# Laurel Street Medical

987 Laurel Street, San Carlos, CA

ANIMAL DENTAL CLINIC

1,185 SF Building, 3,000 SF Land  
Vet Medical, Retail, Residential Dev  
Currently Leased To Vet to 12/31/26  
For Sale, For Lease

COMPASS

**Alexander Kent**  
Sr. Vice President, Broker Associate  
Compass Commercial  
650-793-0541 | DRE# 01718732  
[alexander.kent@compass.com](mailto:alexander.kent@compass.com)

**CoSTAR**  
GROUP  
POWER BROKER





# Laurel Street Medical

987 Laurel Street, San Carlos, CA



**COMPASS**

**Alexander Kent**  
Sr. Vice President, Broker Associate  
Compass Commercial  
650-793-0541 | DRE# 01718732  
[alexander.kent@compass.com](mailto:alexander.kent@compass.com)

**CoSTAR**  
GROUP  
POWER BROKER



# Laurel Street Medical

987 Laurel Street, San Carlos, CA

Within 1 Mile:

Average HH Income = \$335,300\*

Daytime Employment = 15,486

Significant Biotech Growth  
Projected.

Major Employers = Joby Aero, L-3  
Communications, Natera, PG&E,  
Checkpoint, Delta Star,  
ChemoCentryx, Vaxcyte, Iovance  
Biopharmaceuticals, Allakos, Atreca,  
Biomea Fusion

Car Traffic Count = 26,920 Average  
Cars Per Day, El Camino Real.

Walking Distance to Caltrain and El  
Camino Bus Lines.

\* = citywide

# COMPASS

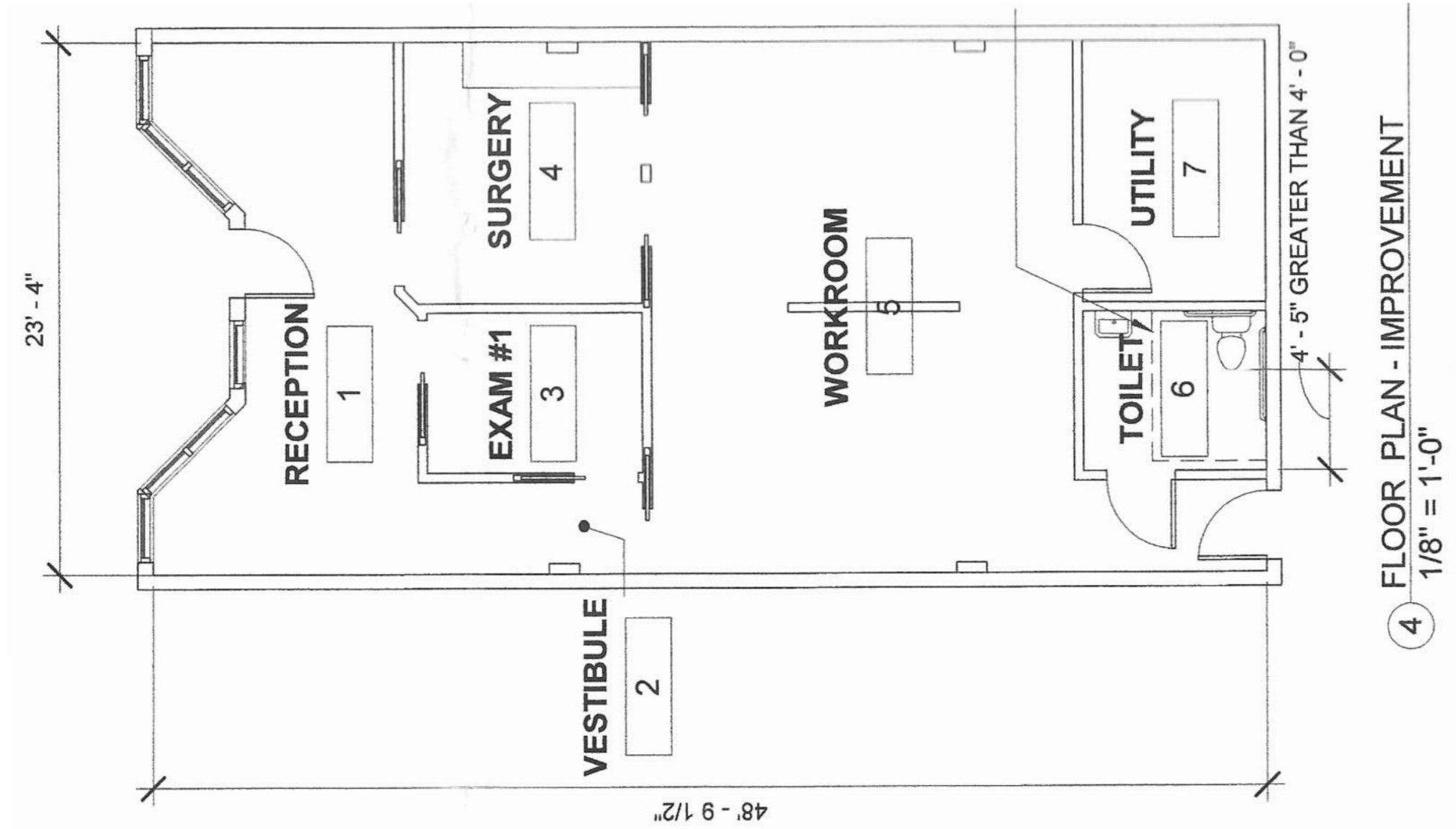
**Alexander Kent**  
Sr. Vice President, Broker Associate  
Compass Commercial  
650-793-0541 | DRE# 01718732  
[alexander.kent@compass.com](mailto:alexander.kent@compass.com)

**CoSTAR**  
GROUP  
POWER BROKER



# Laurel Street Medical

987 Laurel Street, San Carlos, CA



# COMPASS

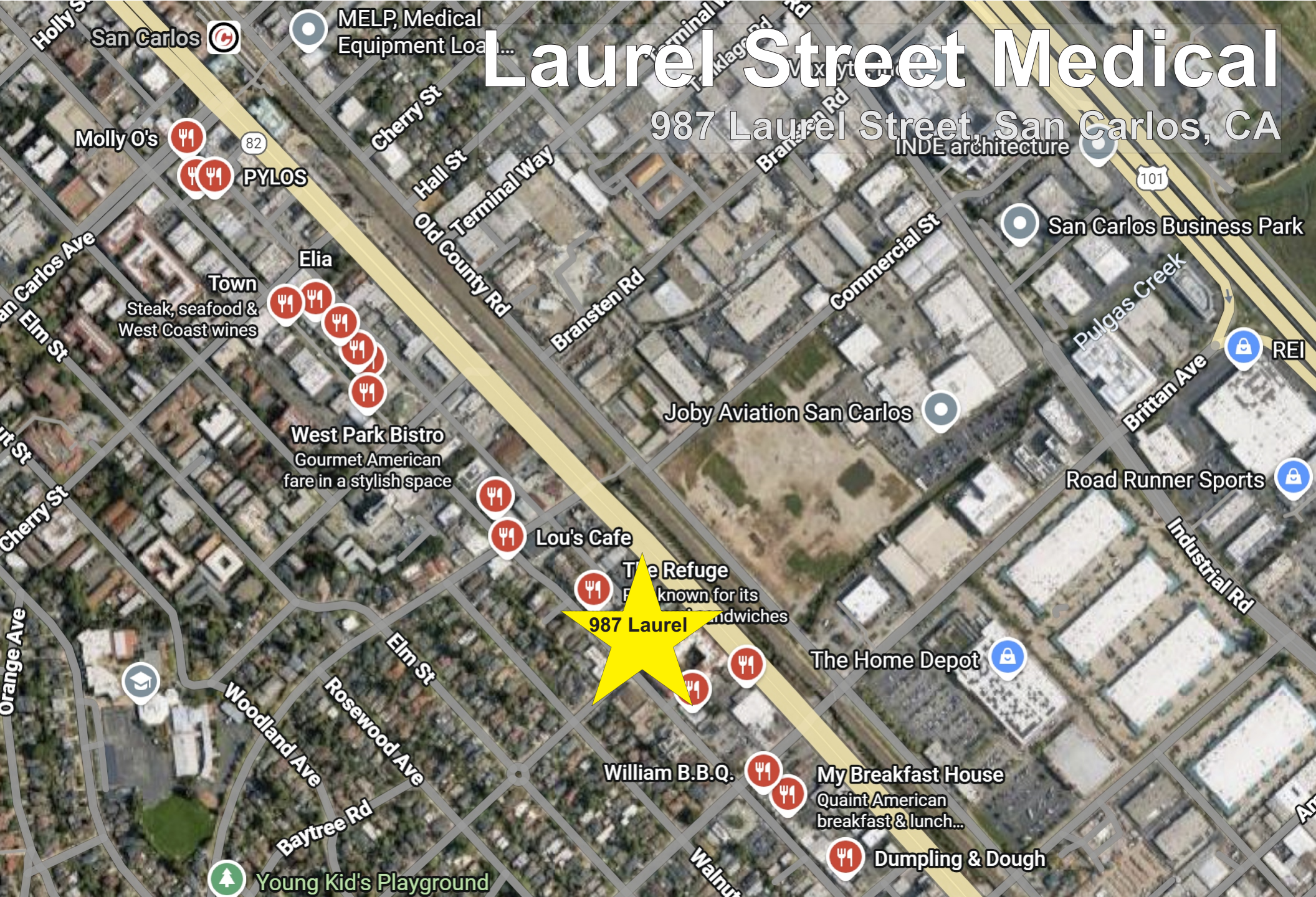
**Alexander Kent**  
Sr. Vice President, Broker Associate  
Compass Commercial  
650-793-0541 | DRE# 01718732  
[alexander.kent@compass.com](mailto:alexander.kent@compass.com)





# Laurel Street Medical

987 Laurel Street, San Carlos, CA



# COMPASS

**Alexander Kent**  
Sr. Vice President, Broker Associate  
Compass Commercial  
650-793-0541 | DRE# 01718732  
[alexander.kent@compass.com](mailto:alexander.kent@compass.com)

**CoSTAR**  
GROUP  
POWER BROKER