



Take the Tour

Land Development Opportunity-Constance Bay

- Price: \$5,000,000.00
- 154 acres approx. (65 acres residential & 30 acres RU)
- Adjacent parcel available
- Total development opportunity approx. 132 acres
- [Click here](#) for detailed RU zoning information
- [Click here](#) for detailed DR zoning information

Get more information

Gillian Burnside

Sales Representative, Vice-President
D +1 613 696 2734
gillian.burnside@avisonyoung.com

Ron Milligan

Sales Representative, Vice-President
D +1 613 696 2750
ron.milligan@avisonyoung.com

Severance potential

For Sale
Land Development Opportunity
1018 Kilmaurs Side Road, Woodlawn, ON



Constance Bay is a unique community just west of Ottawa that offers a small village feel with beautiful beaches, the expansive and protected Torbolton Forest, and sweeping views of the Ottawa River and Gatineau Hills. Under 30 minutes to Kanata and 20 minutes from the Town of Arnprior and Village of Carp, this quaint village can retain its unique character while offering ample amenities in under half an hour's drive or work commute.

Under the Village of Constance Bay Secondary Plan, the City of Ottawa has expanded the village boundary to include additional village residential estate lot development. This offering provides approximately 65 acres of residential developable land and 56 acres of adjacent RU lands (permitting two developable lots to be severed). Together with a separate offering ([link here](#)) on adjacent lands to the east, the total developable opportunity within the expanded village will be approximately 132 acres.

Topographic mapping has been completed and is available to prospective buyers for review.



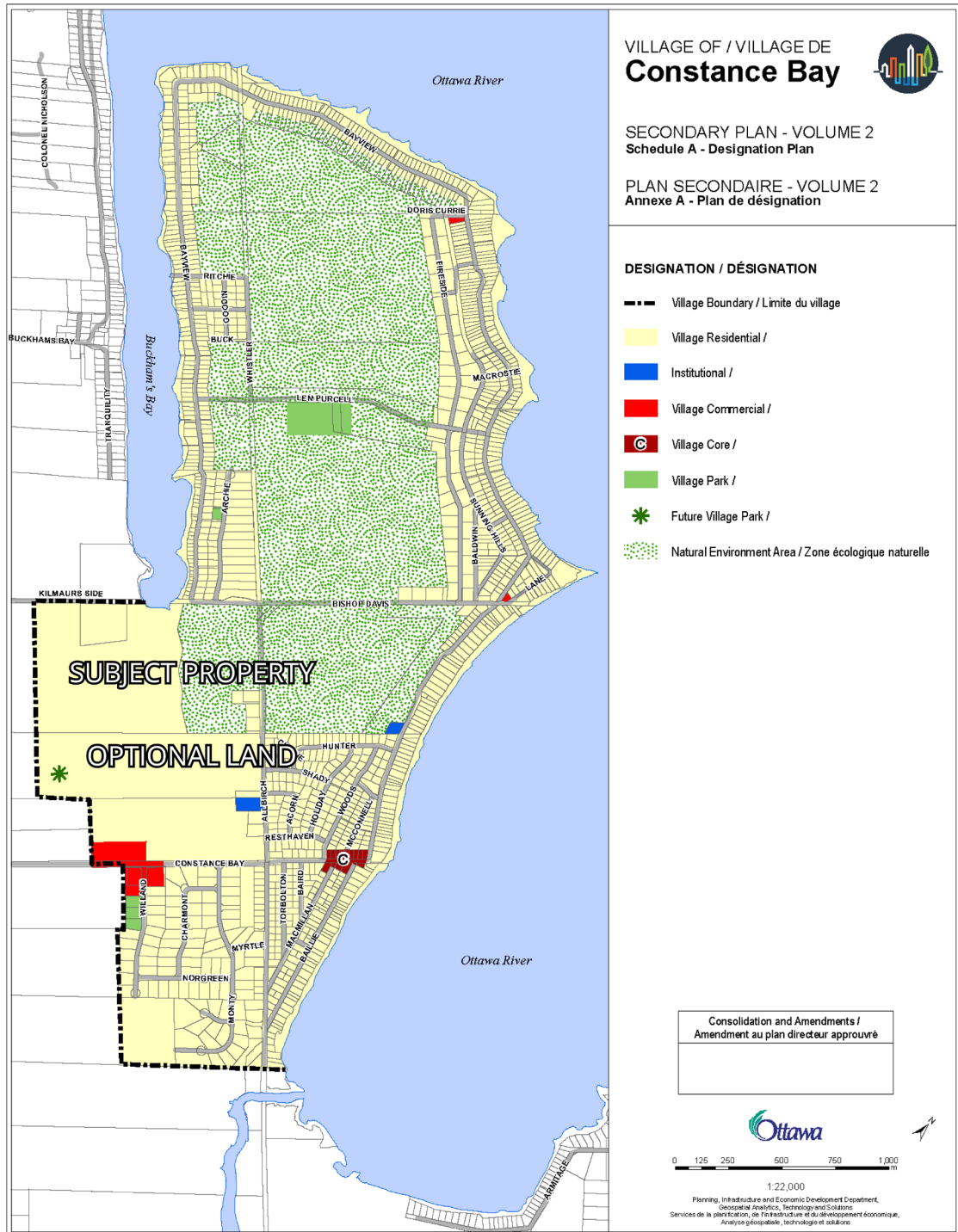
Gillian Burnside
Sales Representative, Vice-President
D +1 613 696 2734
gillian.burnside@avisonyoung.com

Ron Milligan
Sales Representative, Vice-President
D +1 613 696 2750
ron.milligan@avisonyoung.com

Designation Plan

For Sale Land Development Opportunity

1018 Kilmaurs Side Road, Woodlawn, ON



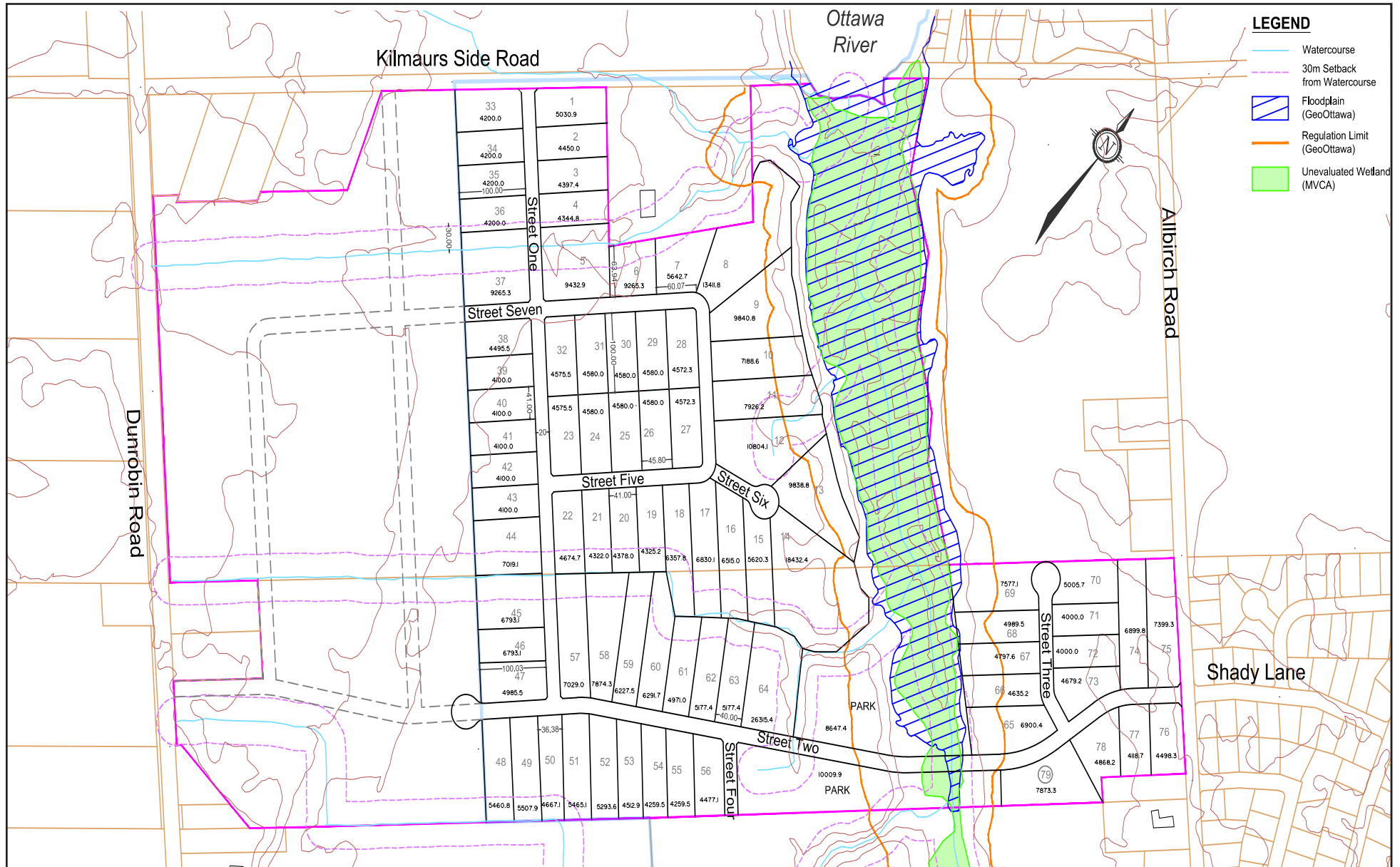
**AVISON
YOUNG**

Gillian Burnside
Sales Representative, Vice-President
D +1 613 696 2734
gillian.burnside@avisonyoung.com

Ron Milligan
Sales Representative, Vice-President
D +1 613 696 2750
ron.milligan@avisonyoung.com

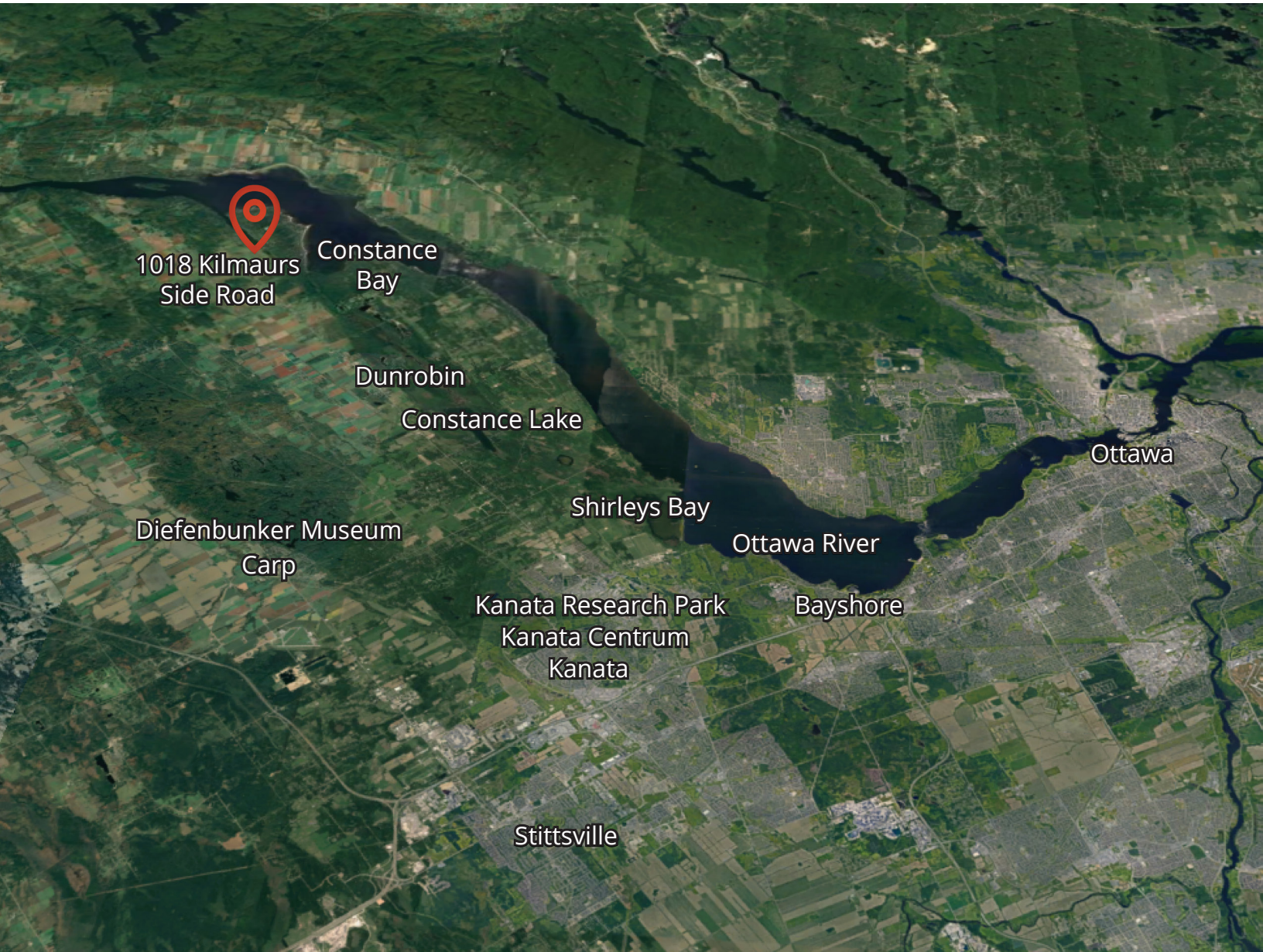
Concept Plan

For Sale
Land Development Opportunity
 1018 Kilmaurs Side Road, Woodlawn, ON



Location Map

For Sale
Land Development Opportunity
1018 Kilmaurs Side Road, Woodlawn, ON



10 minutes
10 km to
Dunrobin

20 minutes
23 km to
Carp

22 minutes
26 km to
Arnprior

27 minutes
28 km to
Kanata

**AVISON
YOUNG**

Gillian Burnside
Sales Representative, Vice-President
D +1 613 696 2734
gillian.burnside@avisonyoung.com

Ron Milligan
Sales Representative, Vice-President
D +1 613 696 2750
ron.milligan@avisonyoung.com