

HISTORIC
MARIETTA STATION

1892

DOWNTOWN MARIETTA

2022



Located in the heart of
**DOWNTOWN
MARIETTA**



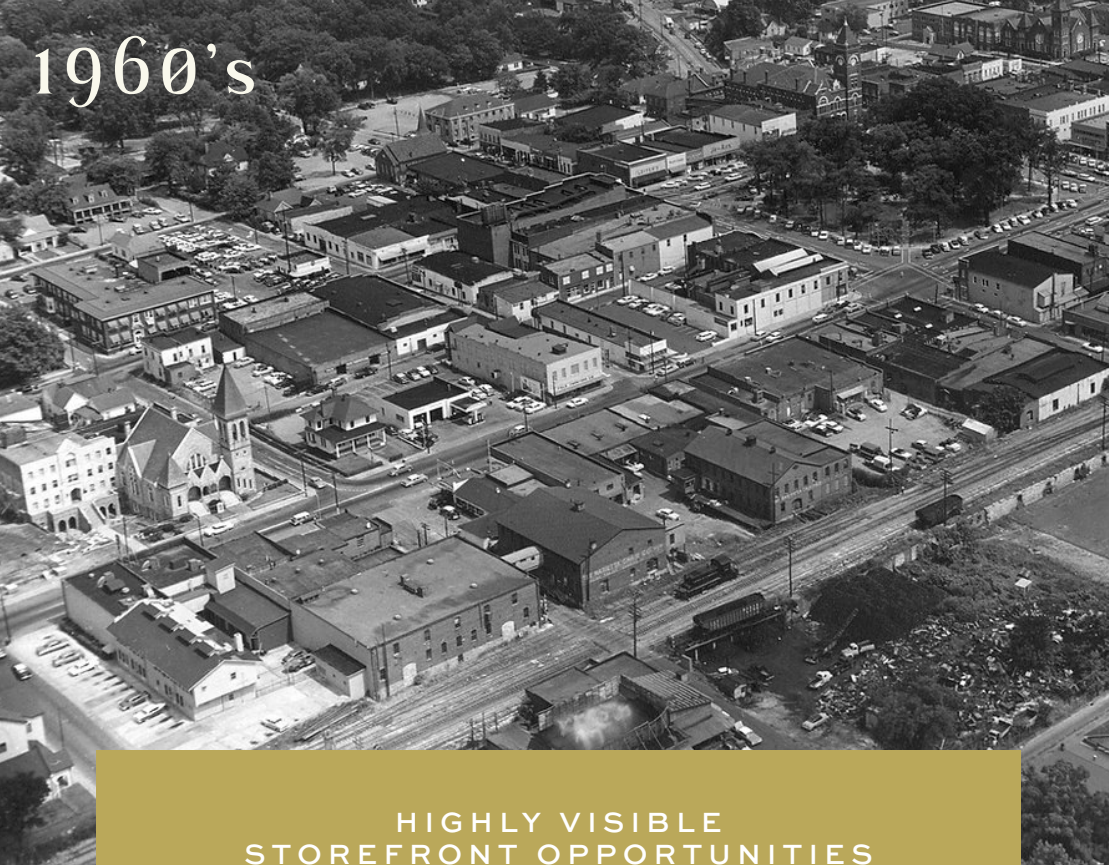
Originally constructed by J.R. Brumby, Brumby started making wooden barrels in Marietta after the Civil War. As flour mills converted from wooden barrels to bags for shipping, Brumby began making wooden chairs.

By 1874, he formed the Brumby Chair Company with his brother, Thomas M. Brumby. The company was a successful manufacturer of chairs, first making its famous rocker in 1879.

Eventually changing its name to The Marietta Chair Company.



1960's



HIGHLY VISIBLE
STOREFRONT OPPORTUNITIES

REVITALIZED ALLEY EXPERIENCE

ORIGINAL BRICK BUILDING

IMMEDIATELY ADJACENT
TO DOWNTOWN SQUARE
& THE MOUNTAIN TO RIVER TRAIL

WALKING DISTANCE TO
MARIETTA SQUARE FOOD HALL

OVER 1,000 PARKING SPACES IN THE
IMMEDIATE VICINITY

MARIETTA STATION

RESTAURANT, RETAIL
& OFFICE



UP TO
7,100 SF
AVAILABLE
FOR LEASE





TRADE MAP



SITE PLAN



MARIETTA STATION

ABOUT MARIETTA SQUARE

MARIETTA STATION

2022 ESTIMATED POPULATION

3 MILES	5 MILES	10 MILES
39,029	125,742	555,381

2022 DAYTIME POPULATION

1 MILE	3 MILES	5 MILES
11,043	51,984	170,286

2022 HOUSEHOLDS

3 MILES	5 MILES	10 MILES
13,219	43,515	198,348

2020 HOUSEHOLD INCOME

3 MILES	5 MILES	10 MILES
\$149,452	\$131,185	\$131,185

AVERAGE NO.
DAILY VISITORS

39,651





30+ RESTAURANTS

LOCALLY LOVED RETAIL SHOPS

YEAR-ROUND WEEKLY
FARMERS MARKET

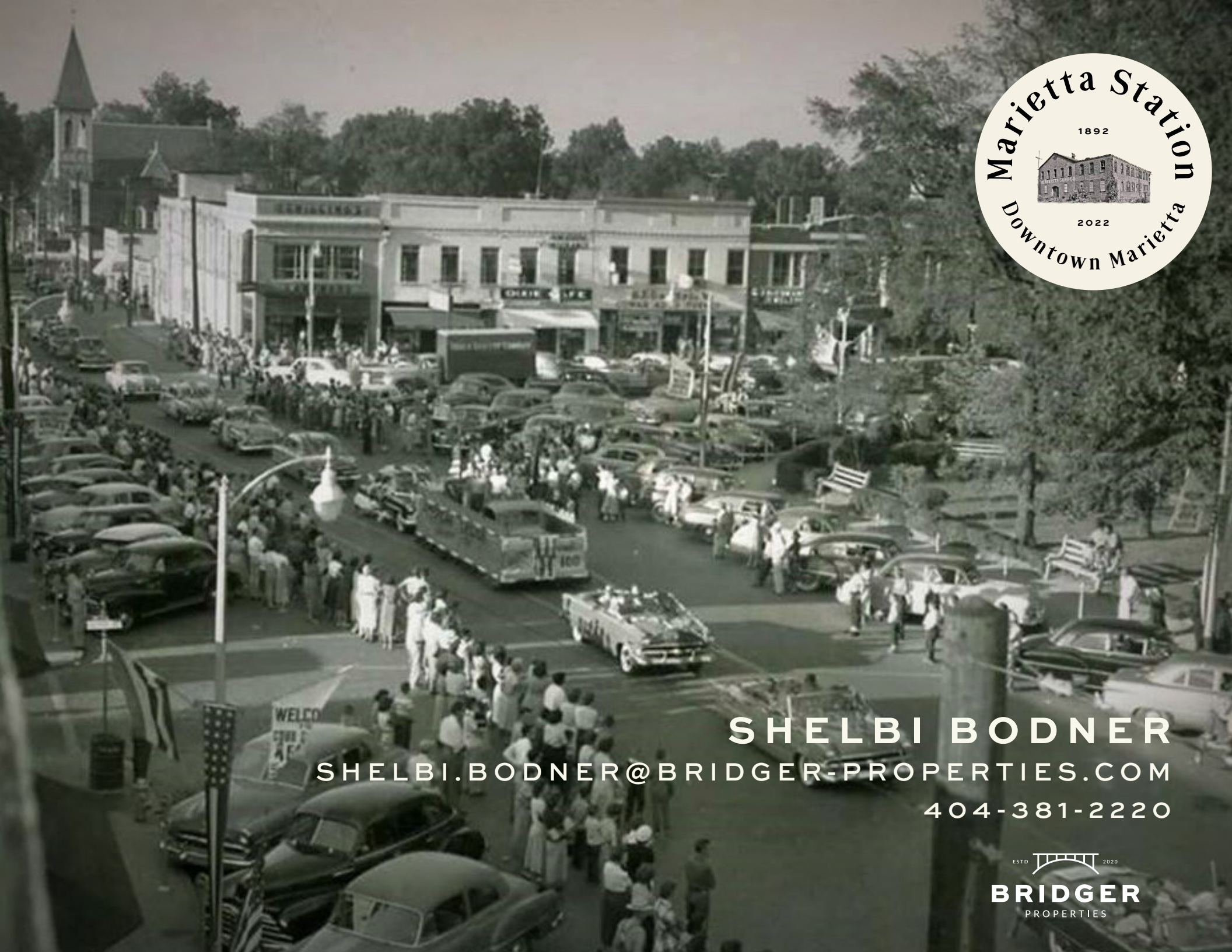
ART GALLERIES

50+ EVENTS PER YEAR
(Up to 70K attendance)

MARIETTA MUSEUM OF HISTORY

STRAND THEATRE

Once an industrial town,
Marietta Square is now
the heart & soul of
Marietta, Georgia.



SHELBI BODNER
SHELBI.BODNER@BRIDGER-PROPERTIES.COM
404-381-2220



BRIDGER
PROPERTIES