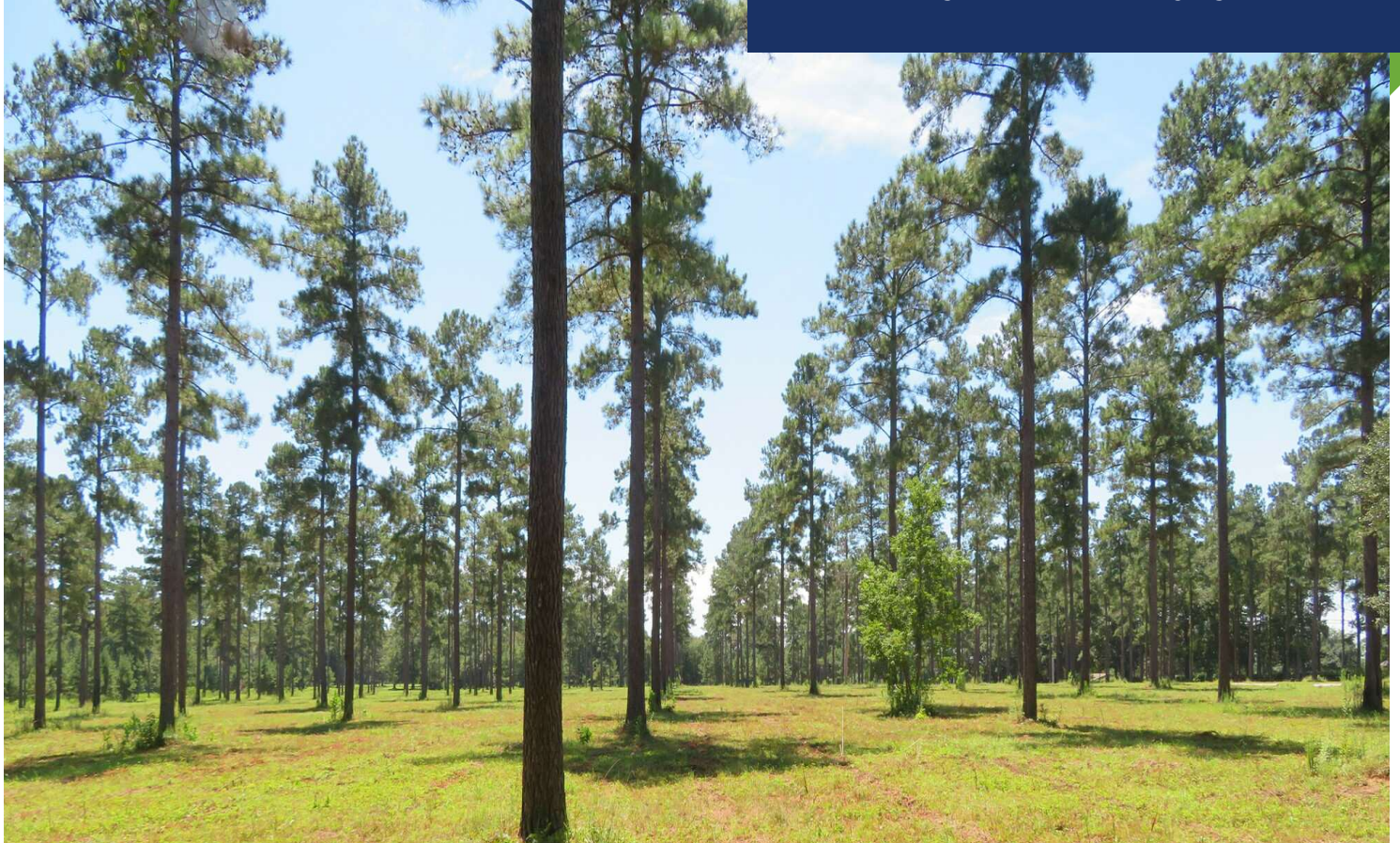




COMMERCIAL REAL ESTATE

RESIDENTIAL LAND FOR SALE



2 LOTS ADJACENT TO THE GOLF CLUB OF QUINCY

Solomon Dairy Road, Quincy, FL 32352

CLARK SMITH

Sales Associate
850.510.6333
csmith@tlgproperty.com

TLG REAL ESTATE SERVICES

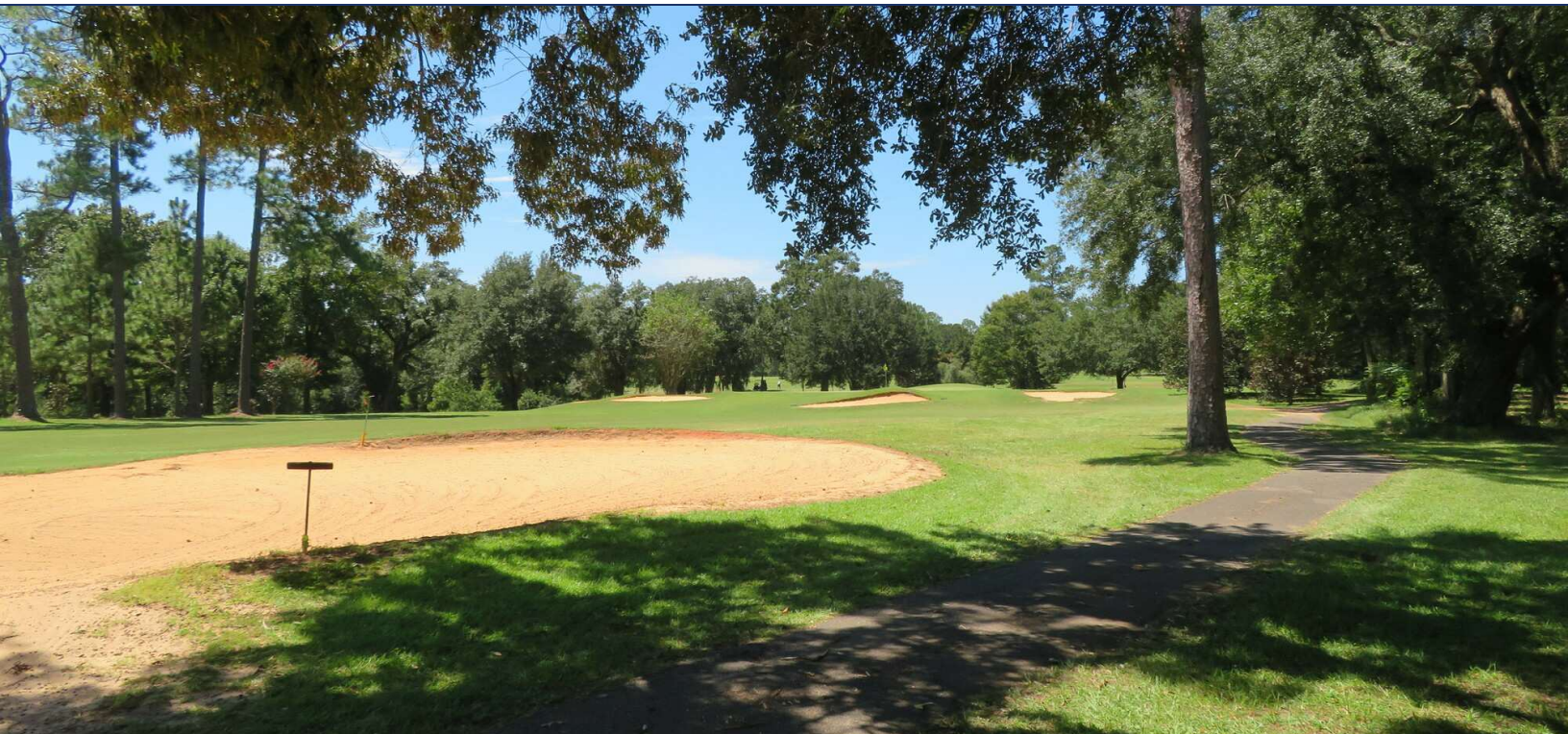
3520 Thomasville Road, Suite 200
Tallahassee, FL 32309
O: 850.385.6363



EXECUTIVE SUMMARY

2 LOTS ADJACENT TO THE GOLF CLUB OF QUINCY

SOLOMON DAIRY ROAD, QUINCY, FL 32352



OFFERING SUMMARY

Sale Price:	\$172,800 per Lot
Lot Size:	7.20 Acres per Lot
Zoning:	Residential
APN:	2-34-3N-4W-0000-00130-0200

PROPERTY OVERVIEW

Two side-by-side 7.20-acre lots available for sale, with the option to purchase together or separately. Priced at \$172,800 per lot. The property features a mix of planted pine and mature oaks, providing natural habitat for deer. Excellent opportunity for a homesite or investment. Owners would have a short walk or golf cart ride to the neighboring Golf Club as well as access to all amenities, including tennis courts, pool, fitness center and a restaurant.

LOCATION OVERVIEW

Located in Gadsden County just minutes away from downtown Quincy, FL. The parcels sit directly next to The Golf Club of Quincy, with frontage along the 18th hole. Easy access to Hwy 90 and a short 30-min drive to Tallahassee. Nearby amenities include local shops, schools, restaurants, and recreational areas.

Clark Smith
850.510.6333
csmith@tlgproperty.com

TLG REAL ESTATE SERVICES
3520 Thomasville Road, Suite 200, Tallahassee, FL 32309
850.385.6363

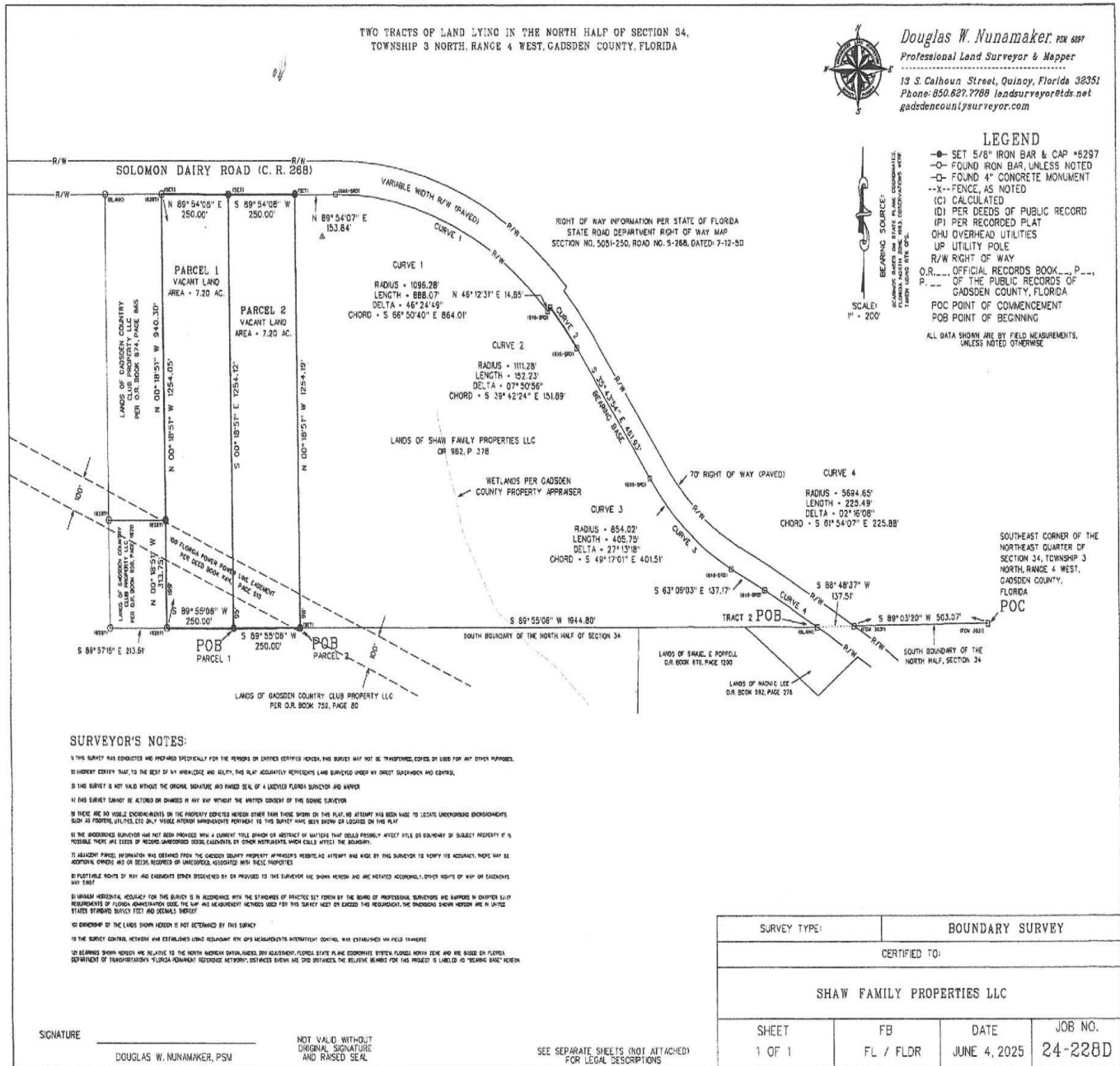




SITE PLANS

2 LOTS ADJACENT TO THE GOLF CLUB OF QUINCY

SOLOMON DAIRY ROAD, QUINCY, FL 32352





WILDLIFE PHOTOS

2 LOTS ADJACENT TO THE GOLF CLUB OF QUINCY

SOLOMON DAIRY ROAD, QUINCY, FL 32352



MOULTRIE



CAMERA 1

13 FEB 2024 06:32 pm



CAMERA 1

13 FEB 2024 05:09



CAMERA 1

13 FEB 2024 05:12

Clark Smith
850.510.6333
csmith@tlgproperty.com

TLG REAL ESTATE SERVICES

3520 Thomasville Road, Suite 200, Tallahassee, FL 32309

850.385.6363





GOLF CLUB PHOTOS

2 LOTS ADJACENT TO THE GOLF CLUB OF QUINCY

SOLOMON DAIRY ROAD, QUINCY, FL 32352



Clark Smith
850.510.6333
csmith@tlgproperty.com

TLG REAL ESTATE SERVICES
3520 Thomasville Road, Suite 200, Tallahassee, FL 32309
850.385.6363

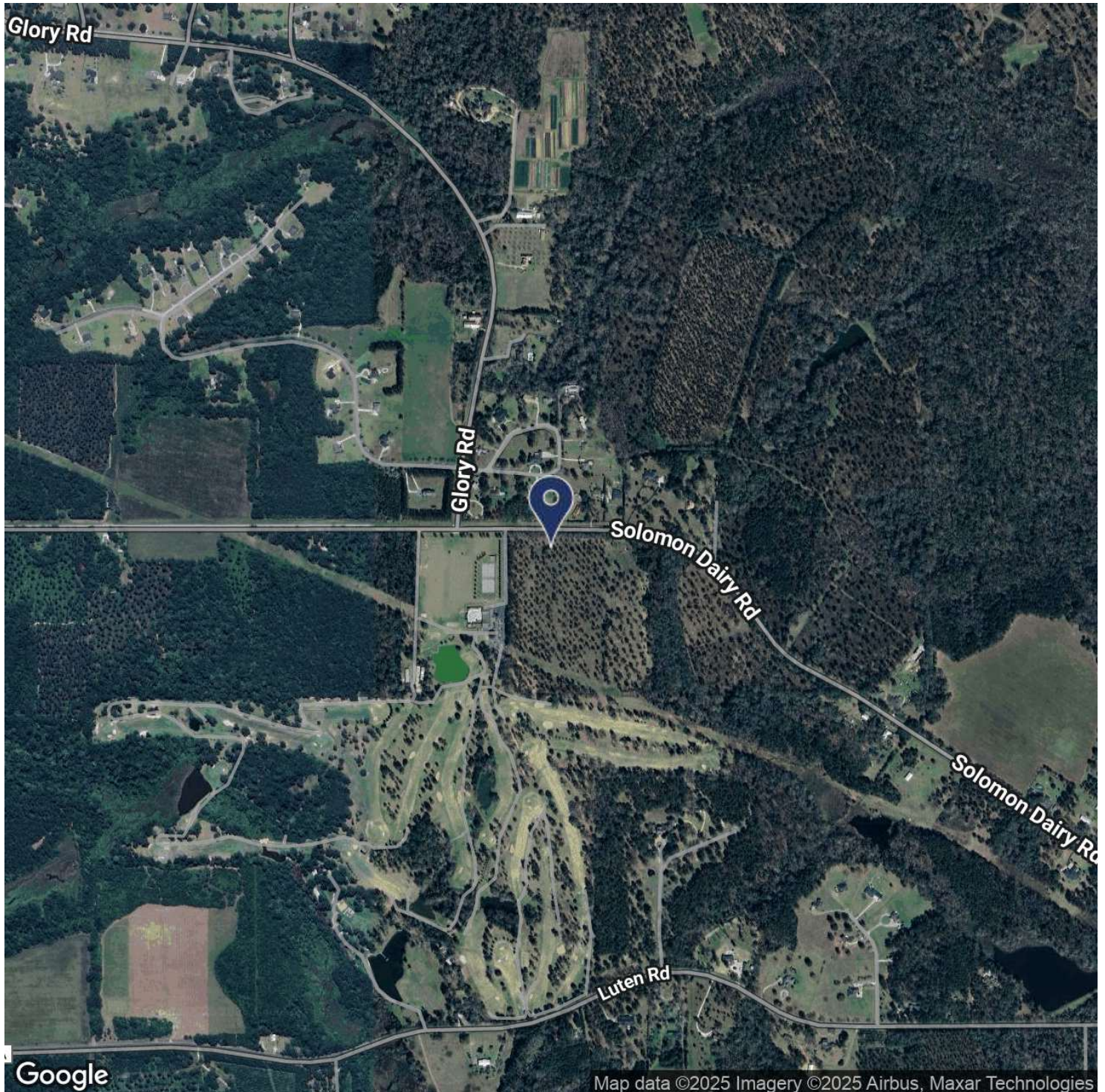




LOCATION MAP

2 LOTS ADJACENT TO THE GOLF CLUB OF QUINCY

SOLOMON DAIRY ROAD, QUINCY, FL 32352



Clark Smith
850.510.6333
csmith@tlgproperty.com

TLG REAL ESTATE SERVICES

3520 Thomasville Road, Suite 200, Tallahassee, FL 32309

850.385.6363



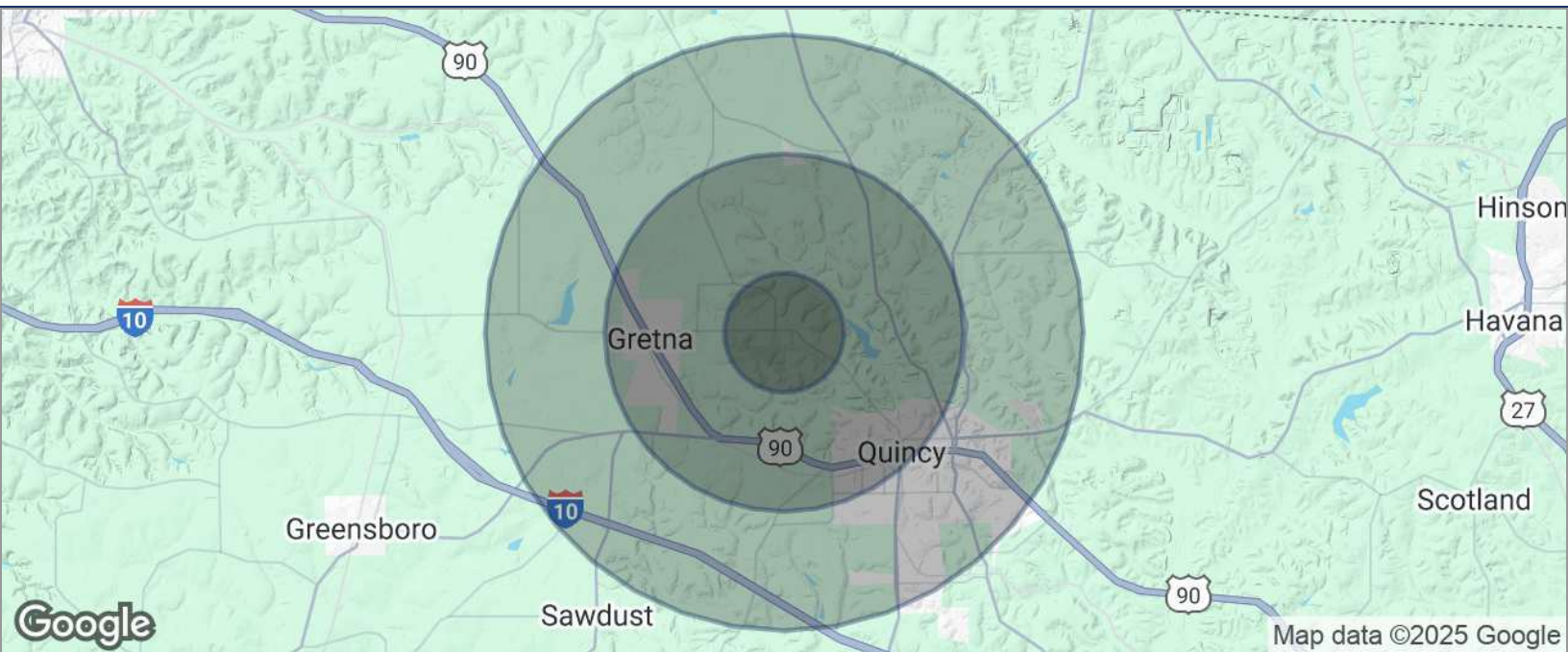
This information has been obtained from sources believed reliable. We have not verified it and make no guarantee, warranty or representation about it. Any projections, opinions, assumptions or estimates used are for example only and do not represent the current or future performance of the property. You and your advisors should conduct a careful, independent investigation of the property to determine to your satisfaction the suitability of the property for your needs. Photos herein are the property of their respective owners and use of these images without the express written content of the owner is prohibited.



DEMOGRAPHICS MAP

2 LOTS ADJACENT TO THE GOLF CLUB OF QUINCY

SOLOMON DAIRY ROAD, QUINCY, FL 32352



POPULATION	1 MILE	3 MILES	5 MILES
TOTAL POPULATION	185	5,425	13,776
MEDIAN AGE	41	40	41
MEDIAN AGE (MALE)	39	38	38
MEDIAN AGE (FEMALE)	42	42	42
HOUSEHOLDS & INCOME	1 MILE	3 MILES	5 MILES
TOTAL HOUSEHOLDS	67	2,063	5,226
# OF PERSONS PER HH	2.8	2.6	2.6
AVERAGE HH INCOME	\$50,107	\$53,563	\$52,295
AVERAGE HOUSE VALUE	\$184,811	\$149,989	\$146,656

* Demographic data derived from 2020 ACS - US Census

Clark Smith
850.510.6333
csmith@tlgproperty.com

TLG REAL ESTATE SERVICES
3520 Thomasville Road, Suite 200, Tallahassee, FL 32309
850.385.6363

