

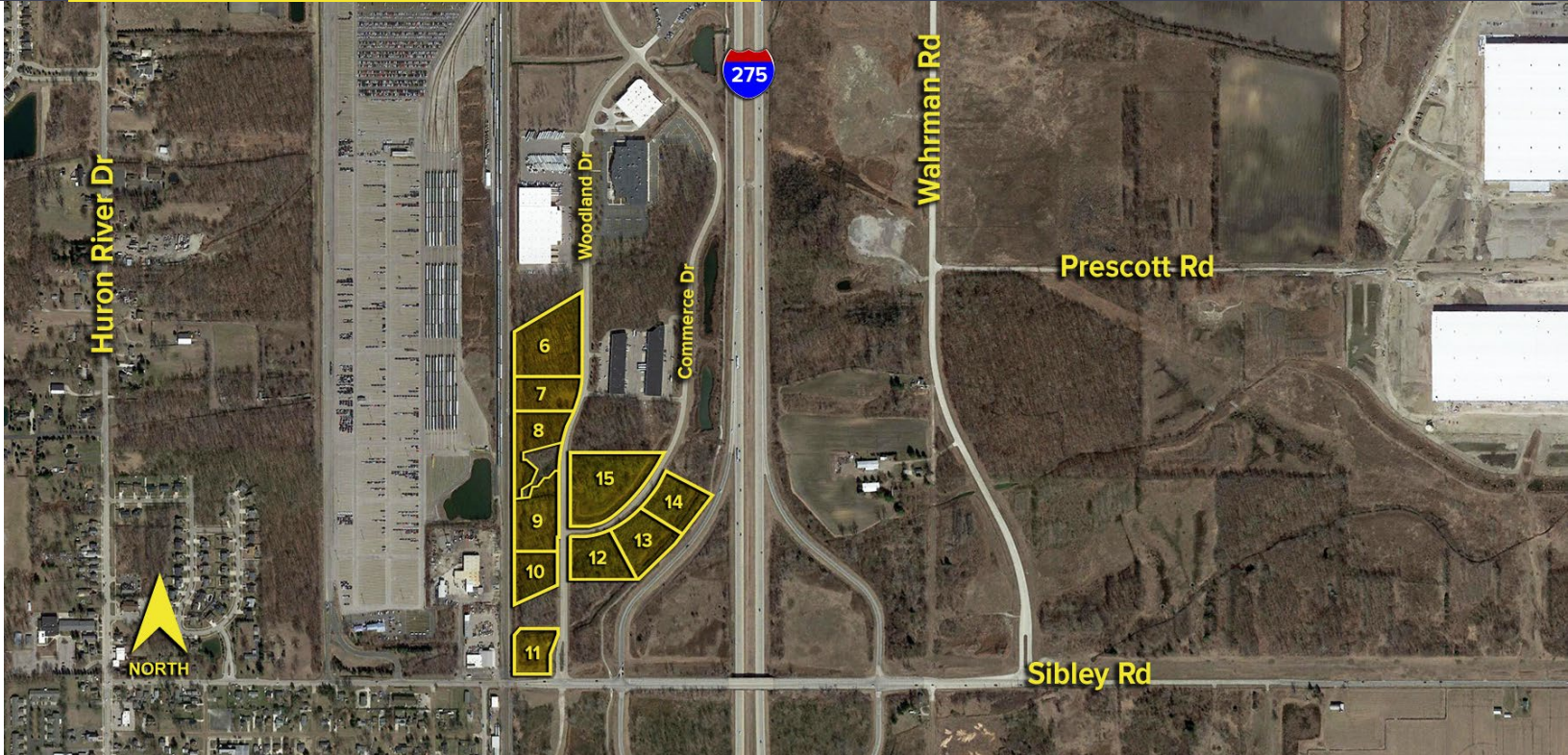
WOODLAND DRIVE HURON TWP., MICHIGAN

LAND FOR SALE / BUILD-TO-SUIT
1.59-25.40 Acres Available



**SIGNATURE
ASSOCIATES**
KNOW SIGNATURE | KNOW RESULTS

HURON COMMERCE CENTER



PROPERTY FEATURES

- 1.59-25.40 Acres Available
- Zoned I-2, B-2
- Sewer, water, and gas utilities on site
- Lots situated in premium industrial park
- For sale or build-to-suit
- Easy access to I-275
- Minutes from Detroit Metropolitan Airport entrance
- Total of 10 parcels can be purchased separately or together



For more information, please contact:

BRAD VIERGEVER
(248) 799 3146
bviergever@signatureassociates.com

STEVE GORDON
(248) 948 0101
sgordon@signatureassociates.com

SIGNATURE ASSOCIATES
One Towne Square, Suite 1200
Southfield, MI 48076
www.signatureassociates.com

Woodland Drive – Huron Twp., Michigan

Land For Sale / Build-to-Suit

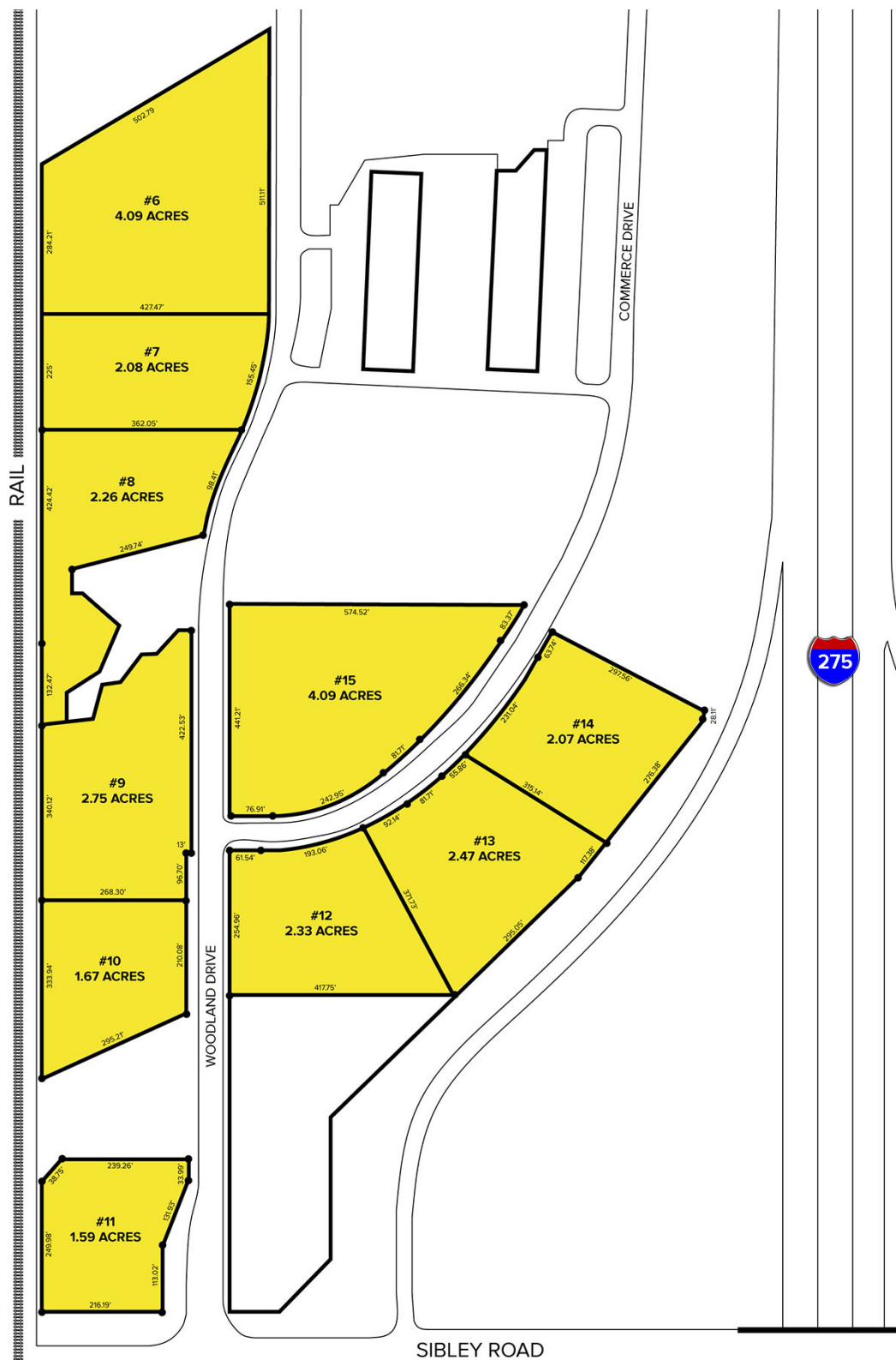
1.59-25.40
Acres
AVAILABLE

Site Plan

AVAILABLE LOTS

Lot#	Zoned	Acres	Price
#06	I-2	4.09	\$184,050
#07	I-2	2.08	\$93,600
#08	I-2	2.26	\$101,700
#09	I-2	2.75	\$123,750
#10	I-2	1.67	\$75,150
#11	B-2	1.59	\$119,250
#12	I-2	2.33	\$151,450
#13	I-2	2.47	\$160,550
#14	I-2	2.07	\$134,550
#15	I-2	4.09	\$184,050

I-2: Heavy Industrial | B-2: General Business



For more information, please contact:

BRAD VIERGEVER

(248) 799 3146

bviergever@signatureassociates.com

STEVE GORDON

(248) 948 0101

sgordon@signatureassociates.com

SIGNATURE ASSOCIATES

One Towne Square, Suite 1200

Southfield, MI 48076

www.signatureassociates.com

Woodland Drive – Huron Twp., Michigan

Land For Sale / Build-to-Suit

1.59-25.40
Acres
AVAILABLE

Aerial View



For more information, please contact:

BRAD VIERGEVER
(248) 799 3146
bviergever@signatureassociates.com

STEVE GORDON
(248) 948 0101
sgordon@signatureassociates.com

SIGNATURE ASSOCIATES
One Towne Square, Suite 1200
Southfield, MI 48076
www.signatureassociates.com