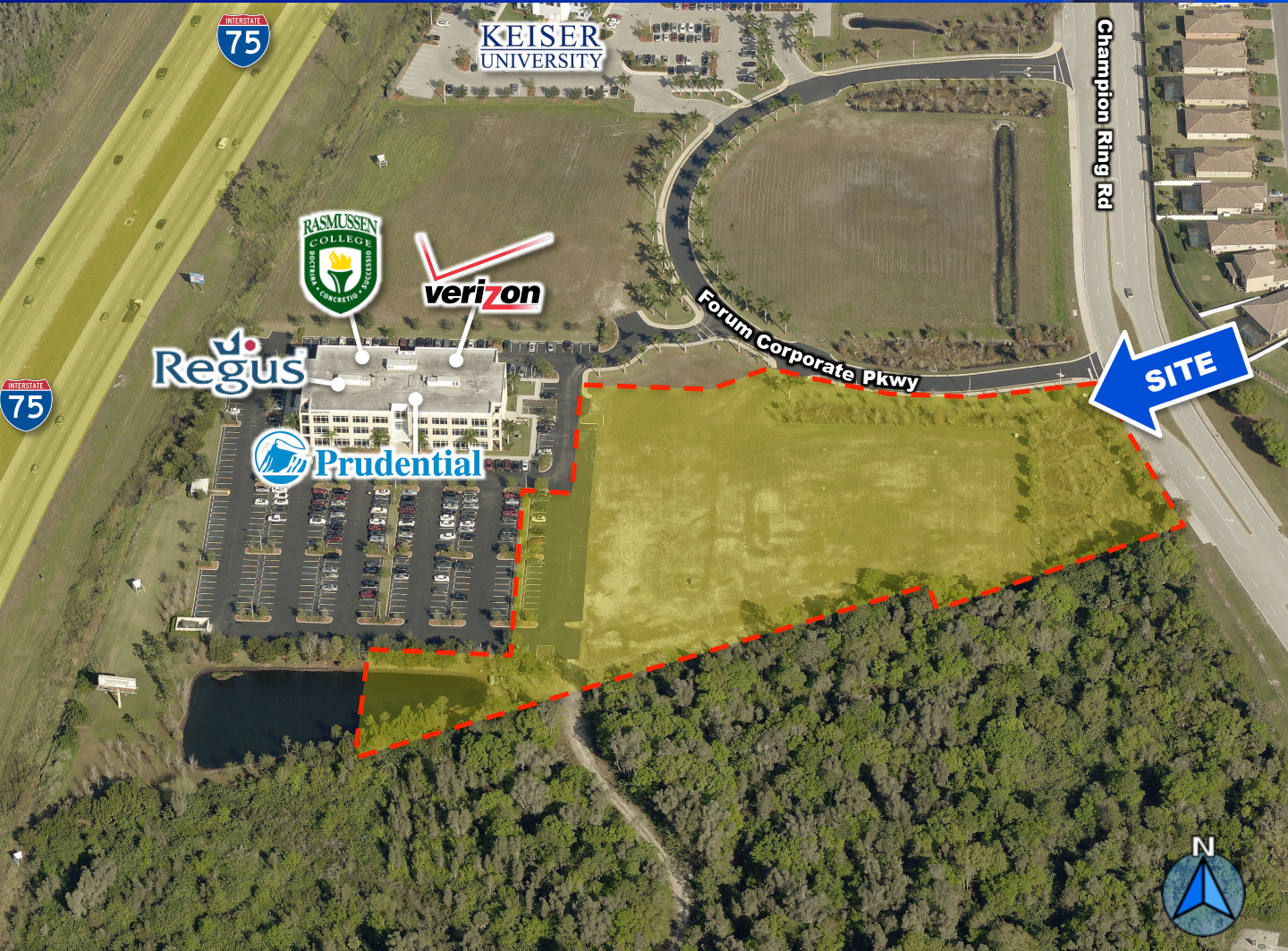


FOR SALE

# FORUM CORPORATE PARK

VACANT LAND OPPORTUNITY IN THE FORUM AT FORT MYERS  
9180 FORUM CORPORATE PKWY | FORT MYERS, FL 33905

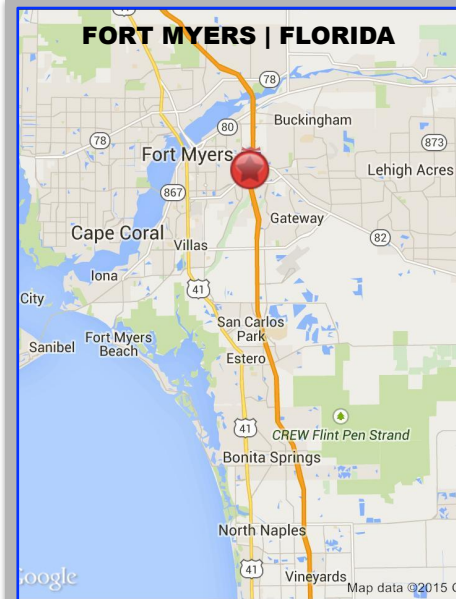


## VACANT LAND OPPORTUNITY

- Price:** Call for details
- Available:** 5.8± Acres (251,633± SF)
- Zoning:** SDA (Lee County)
- Location:** The subject site is located on the SWQ of Champion Ring Rd & Forum Corporate Pkwy in Fort Myers, FL. The site is located within The Forum at Fort Myers.

:: Dan O'Berski  
 Managing Director | Principal  
 239.334.3040  
[dan.ober ski@trinitycre.com](mailto:dan.ober ski@trinitycre.com)

:: Tim Schneider  
 Senior Associate  
 239.334.3040  
[tim.schneider@trinitycre.com](mailto:tim.schneider@trinitycre.com)



For More  
 Information  
 Please  
 Contact

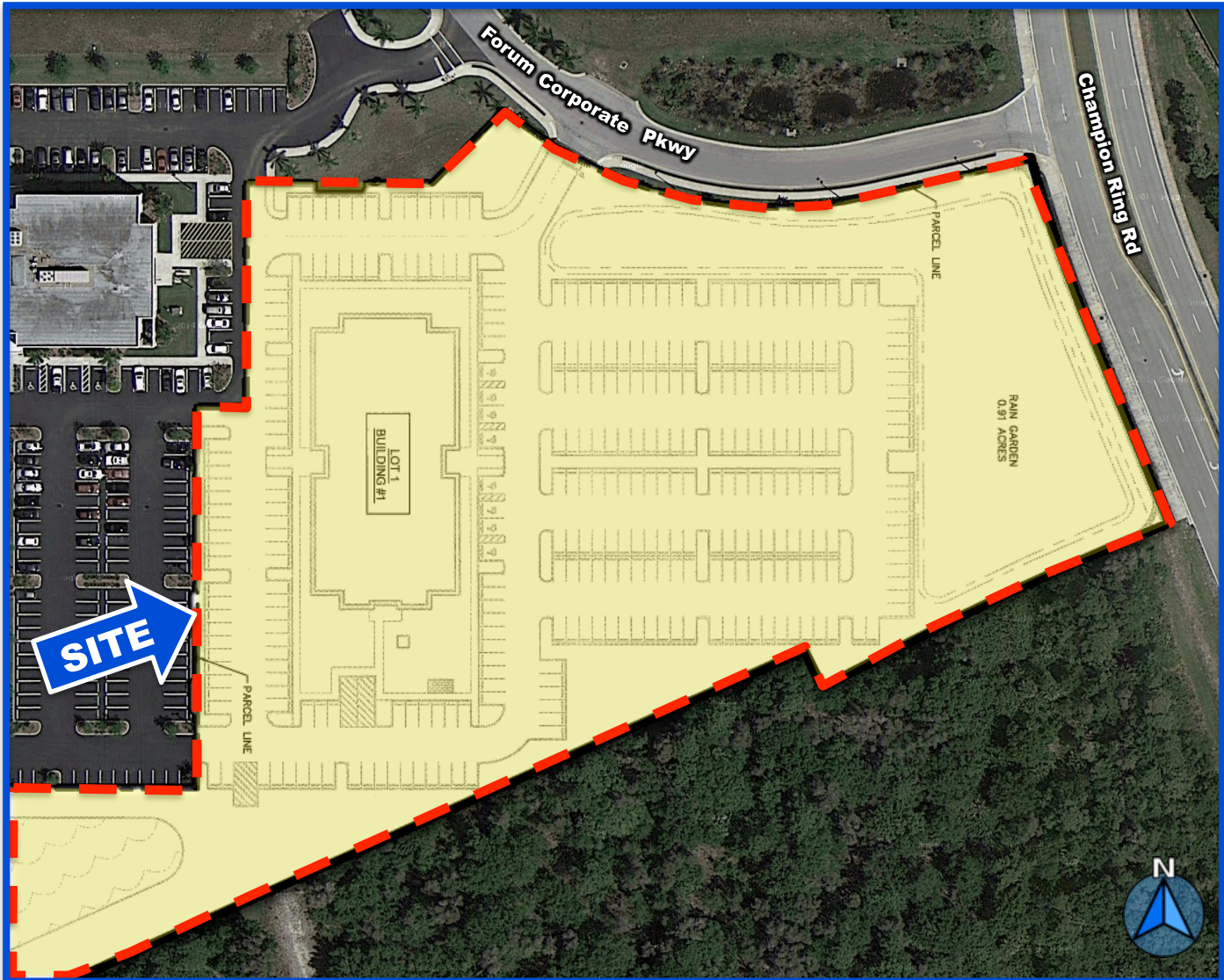
Trinity Commercial Group | 9250 Corkscrew Rd | Suite 13 | Estero, FL 33928 | [www.trinitycre.com](http://www.trinitycre.com)

© 2015 Trinity Commercial Group, Inc. This information is considered accurate, but not guaranteed.

FOR SALE

# FORUM CORPORATE PARK

VACANT LAND OPPORTUNITY IN THE FORUM AT FORT MYERS  
9180 FORUM CORPORATE PKWY | FORT MYERS, FL 33905



Demographics 2014	1 mile	3 mile	5 mile
EST. POPULATION	1,871	21,237	97,488
EST. EMPLOYMENT DENSITY	1,335	16,329	69,539
MEDIAN HOUSEHOLD INCOME	\$84,936	\$74,526	\$61,651
TRAFFIC COUNT – AADT	Colonial Blvd - 75,000±		

For More Information Please Contact

:: Dan O'Berski  
Managing Director | Principal  
239.334.3040  
dan.obernski@trinitycre.com

:: Tim Schneider  
Senior Associate  
239.334.3040  
tim.schneider@trinitycre.com



FOR SALE

# FORUM CORPORATE PARK

VACANT LAND OPPORTUNITY IN THE FORUM AT FORT MYERS  
 9180 FORUM CORPORATE PKWY | FORT MYERS, FL 33905



Demographics 2014	1 mile	3 mile	5 mile
EST. POPULATION	1,871	21,237	97,488
EST. EMPLOYMENT DENSITY	1,335	16,329	69,539
MEDIAN HOUSEHOLD INCOME	\$84,936	\$74,526	\$61,651
TRAFFIC COUNT – AADT	Colonial Blvd - 75,000±		

For More Information Please Contact

:: Dan O'Berski  
 Managing Director | Principal  
 239.334.3040  
[dan.obernski@trinitycre.com](mailto:dan.obernski@trinitycre.com)

:: Tim Schneider  
 Senior Associate  
 239.334.3040  
[tim.schneider@trinitycre.com](mailto:tim.schneider@trinitycre.com)

