

# Former Hardee's

2720 Maple Crest Road, Fort Wayne, IN 46815



**2,483 SF AVAILABLE FOR SALE OR LEASE**

## Property Highlights

- + **For Lease Price:** \$35.00 PSF, NNN
- + **For Sale Price:** \$1,300,000
- + Size: 2,483 SF / 0.8 Acres
- + Year Built: 2018
- + This prime standalone retail building, formerly a Hardee's, is zoned for C2 general commercial. This property features a drive-thru, prominent monument signage, and 31 parking spaces, making it ideal for various retail or QSR concepts. Strategically located at the high-traffic intersection amidst national retailers, residential areas, and schools.

## Demographics

	1 Mile Radius	3 Mile Radius	5 Mile Radius
Population	12,642	64,383	153,016
Households	4,981	26,766	62,994
Avg Household Income	\$84,019	\$84,004	\$77,987

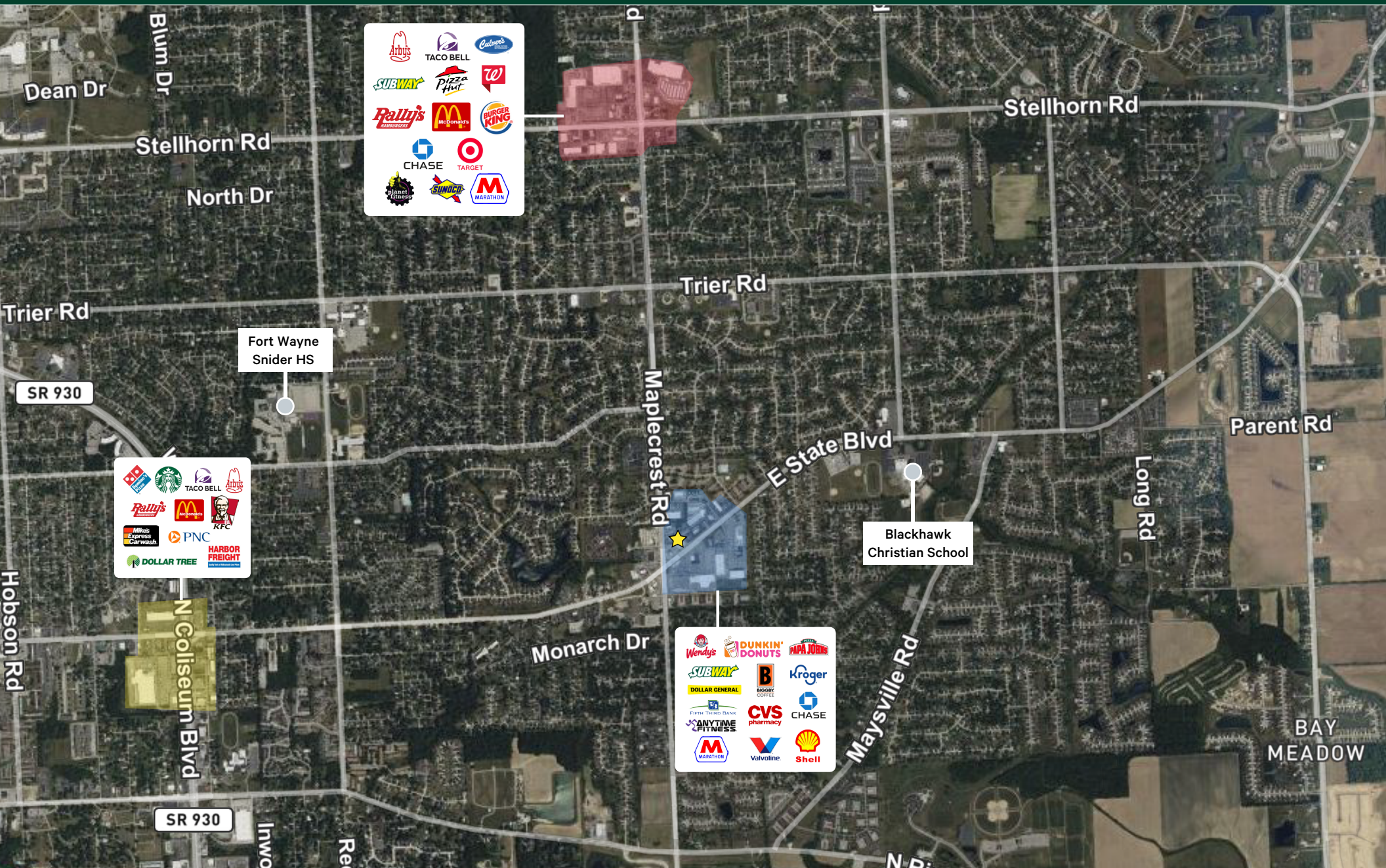
## Traffic Counts

Maplecrest Rd	18,516 VPD
E State Blvd	14,537 VPD
State Road 930	28,973 VPD



# Former Hardee's

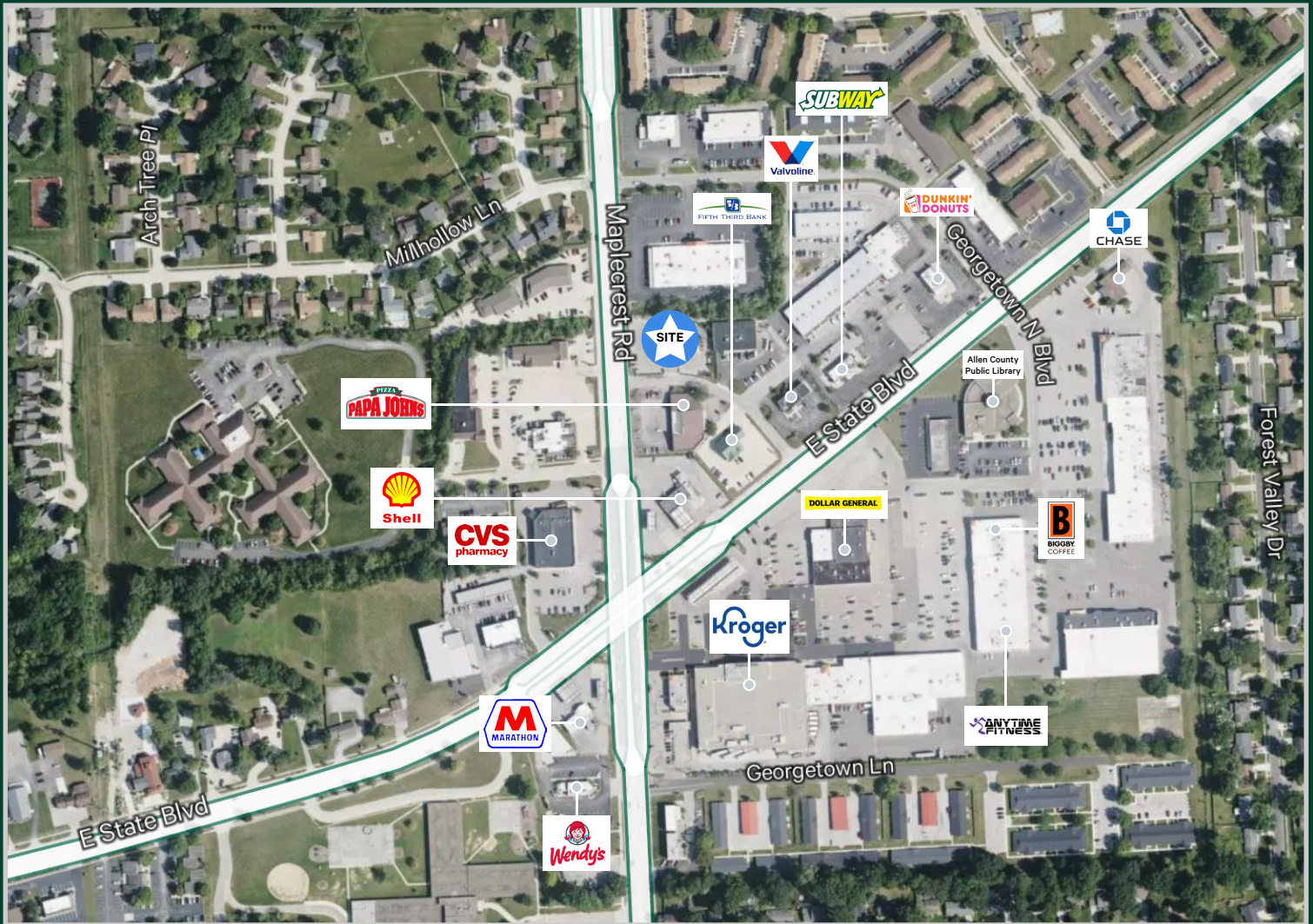
Retail | For Sale or Lease



- Arby's
- TACO BELL
- Outback
- SUBWAY
- PIZZA HUT
- W
- Rally's
- McDonald's
- BURGER KING
- CHASE
- TARGET
- Planet Fitness
- SUNOCO
- MARATHON

- Arby's
- TACO BELL
- Rally's
- McDonald's
- KFC
- Milnes Express Carwash
- PNC
- DOLLAR TREE
- HARBOR FREIGHT

- Wendy's
- DUNKIN' DONUTS
- PAPA JOHN'S
- SUBWAY
- DOLLAR GENERAL
- Biggys Coffee
- Kroger
- Fifth Third Bank
- CVS pharmacy
- CHASE
- ANYTIME FITNESS
- MARATHON
- Valvoline
- Shell



## Contact Us

**Nathaniel Delumpa**  
Senior Associate  
+1 317 400 8935 C  
Nathaniel.Delumpa@cbre.com

**Pablo Rodriguez**  
First Vice President  
+1 760 610 3147 C  
Pablo.Rodriguez@cbre.com

**CBRE Indianapolis**  
8888 Keystone Crossing  
Suite 1000  
Indianapolis, IN 46240  
+1 317 269 1000

© 2026 CBRE, Inc. All rights reserved. This information has been obtained from sources believed reliable, but has not been verified for accuracy or completeness. You should conduct a careful, independent investigation of the property and verify all information. Any reliance on this information is solely at your own risk. CBRE and the CBRE logo are service marks of CBRE, Inc. All other marks displayed on this document are the property of their respective owners, and the use of such logos does not imply any affiliation with or endorsement of CBRE. Photos herein are the property of their respective owners. Use of these images without the express written consent of the owner is prohibited.