

NEWMARK

SIGNAGE

FORMER
**BED BATH &
BEYOND**

14351 HINDRY AVE.
HAWTHORNE, CA

For Sale or Lease

South Bay Anchor Opportunity

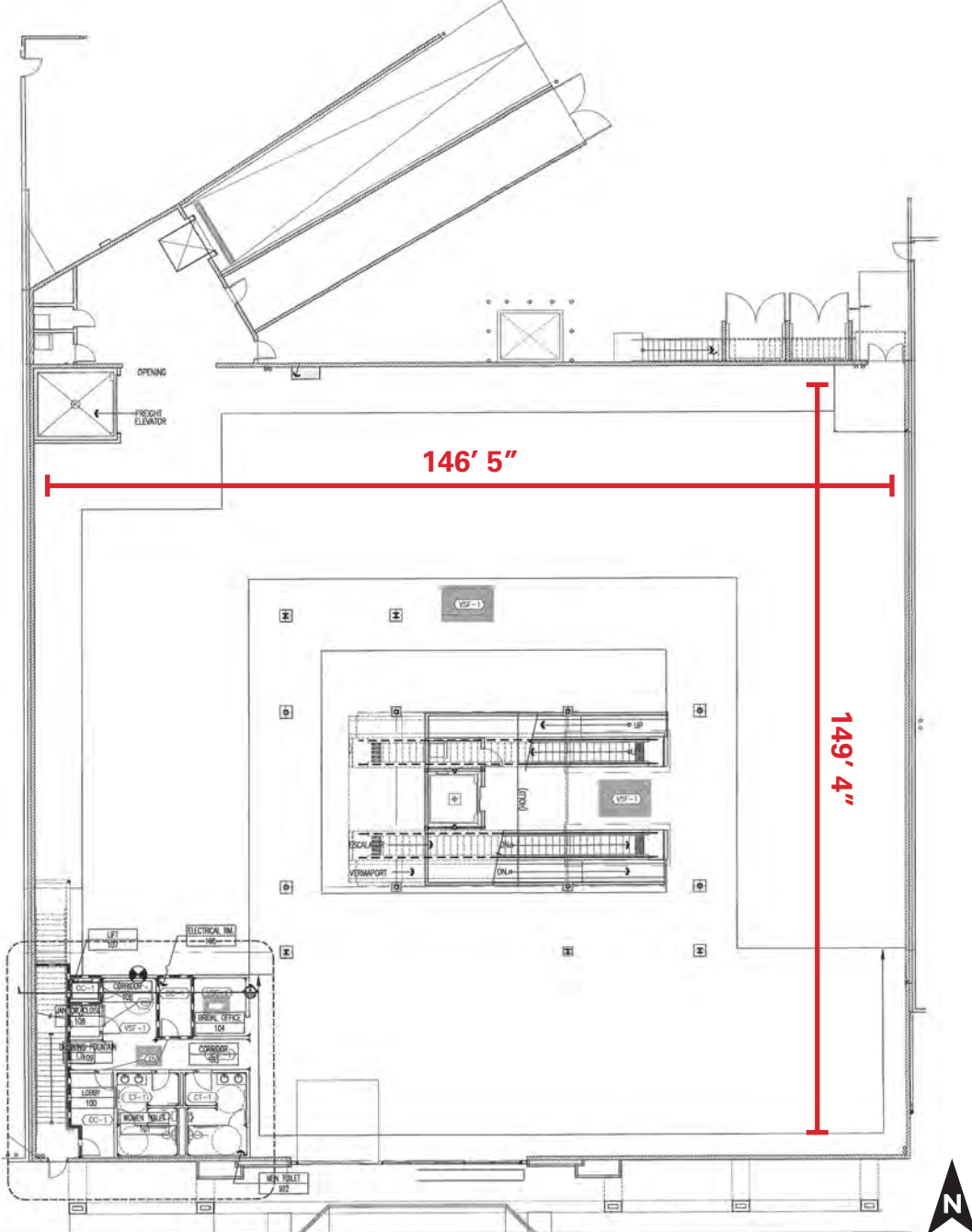
Property Features

**14351 HINDRY AVE.
HAWTHORNE, CA**

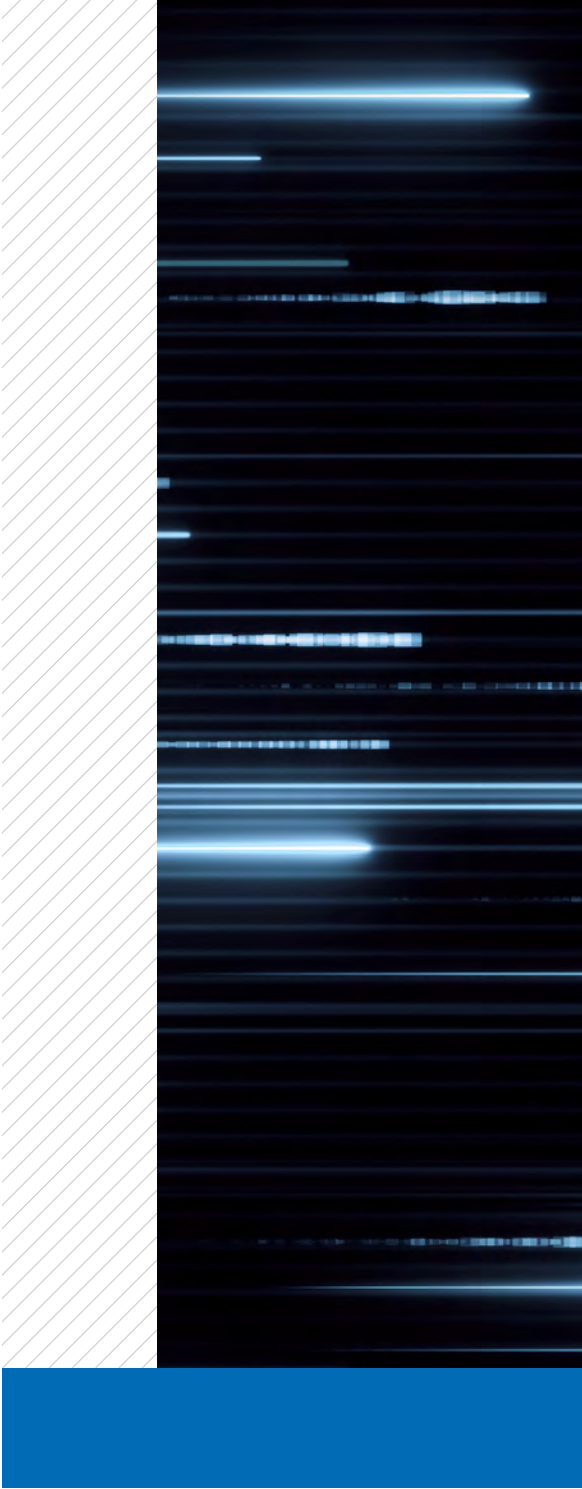
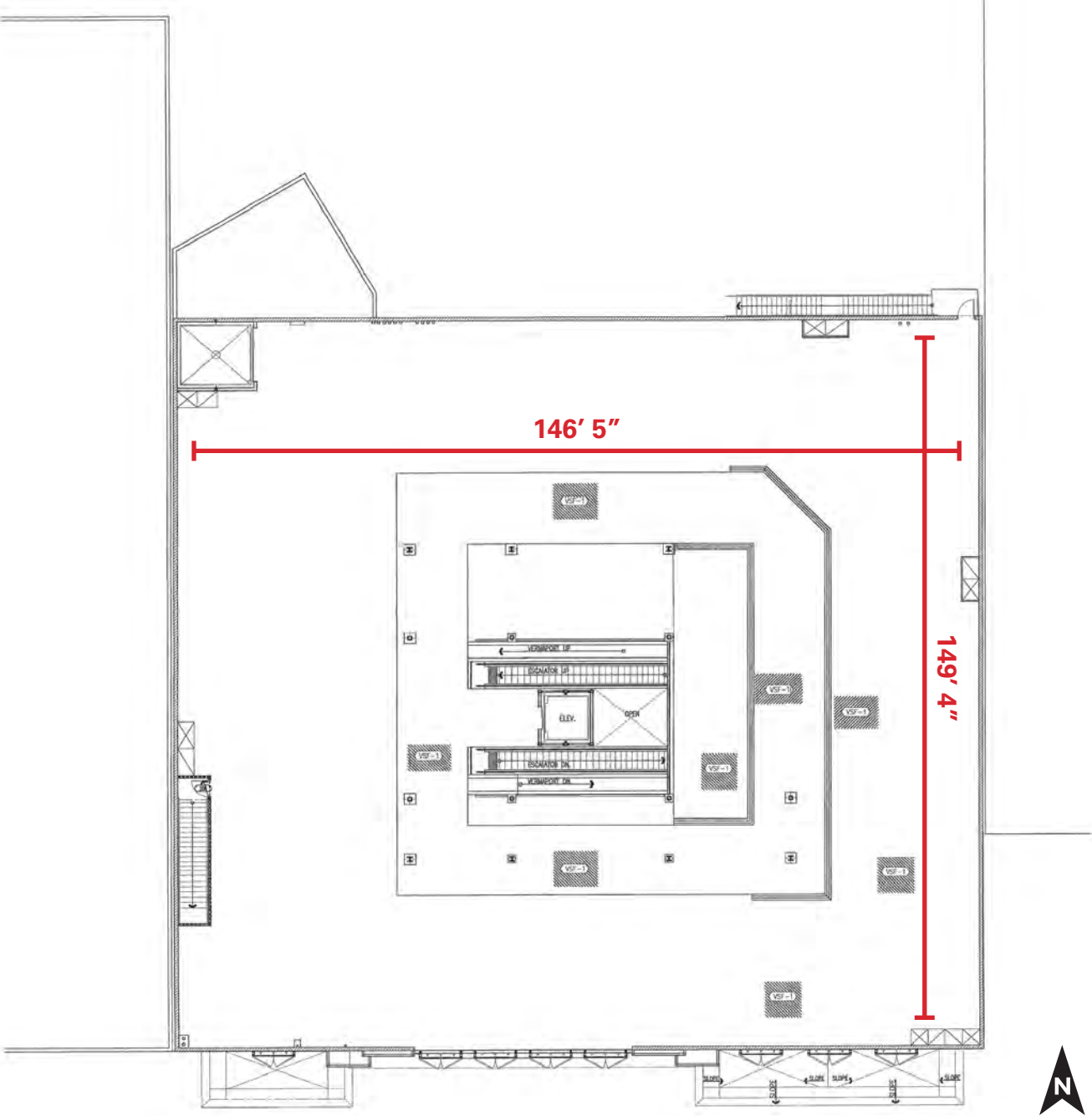
- Rare anchor space located in one of the most prominent promotional shopping centers servicing the South Bay region of Los Angeles County.
- The space is approximately 40,500 square feet on two levels with convenient internal vertical transportation.
- The building is prominently located within the Hawthorne Gateway Shopping Center anchored by Costco and Cost Plus with outstanding accessibility and visibility to the 405 Freeway.
- Located in immediate proximity to the affluent communities of Manhattan Beach, Hermosa Beach, Redondo Beach, and El Segundo.
- Outstanding demographics and regional location account for the tremendous sales performance of the retailers in the center.



Floor Plan - 1st Floor



Floor Plan - 2nd Floor



Site Plan





405
311,000 CPD



SUBJECT PROPERTY

HINDRY AVE.

ROSECRANS AVE. - 66,529 CPD



ISSI AVE.





Demographics

POPULATION

17,552
1-Mile

276,712
3-Miles

565,345
5-Miles

EMPLOYEES

22,558
1-Mile

142,119
3-Miles

312,849
5-Miles

TOTAL BUSINESSES

1,755
1-Mile

13,182
3-Miles

27,914
5-Miles

HOUSEHOLD INCOME

\$114,973
1-Mile

\$92,541
3-Miles

\$87,731
5-Miles

MEDIAN AGE

40.0
1-Mile

36.4
3-Miles

37.4
5-Miles

COLLEGE DEGREE

50%
1-Mile

44%
3-Miles

42%
5-Miles

Competition Map



MANHATTAN VILLAGE

Tommy Bahama ANTHROPOLOGIE

URBAN OUTFITTERS macys Ralpins Bath Works

PLAZA EL SEGUNDO

WHOLE FOODS MARKET rack HomeGoods ULTA

DICK'S Sporting Goods PET SMART The Container Store

PACIFIC CORPORATE TOWERS

SANTA MONICA

PLAYA DEL REY

PACIFIC OCEAN

MANHATTAN BEACH

THE POINT

EL SEGUNDO

LAX

Raytheon

TRADER JOE'S REI MOTHER'S MARKET & BITECHER Bristol Farms An Entomology Food Store OLD NAVY

THE ATRIUM

EQUINOX

McDonald's COST COCOPUS WORLD MARKET CHIPOTLE MEXICAN GRILL NAVY FEDERAL Credit Union STARBUCKS

NORTHROP GRUMMAN

COSTCO WHOLESALE

ROSEGRANS AVE

405

REDONDO BEACH

SOUTH BAY

HOBBY LOBBY

ROSS DRESS FOR LESS

TJ-maxx

Party City

SOUTH BAY FORD

Uber

THE HOME DEPOT

Burlington

Food 4 Less



BILL BAUMAN

Vice Chairman
t 213-298-3593
bill.bauman@nmrk.com
CA RE Lic. #00969493

PETER SPRAGG

Senior Managing Director
t 213-298-3594
peter.spragg@nmrk.com
CA RE Lic. #01485613

CORPORATE LICENSE #01355491

The information contained herein has been obtained from sources deemed reliable but has not been verified and no guarantee, warranty or representation, either express or implied, is made with respect to such information. Terms of sale or lease and availability are subject to change or withdrawal without notice.