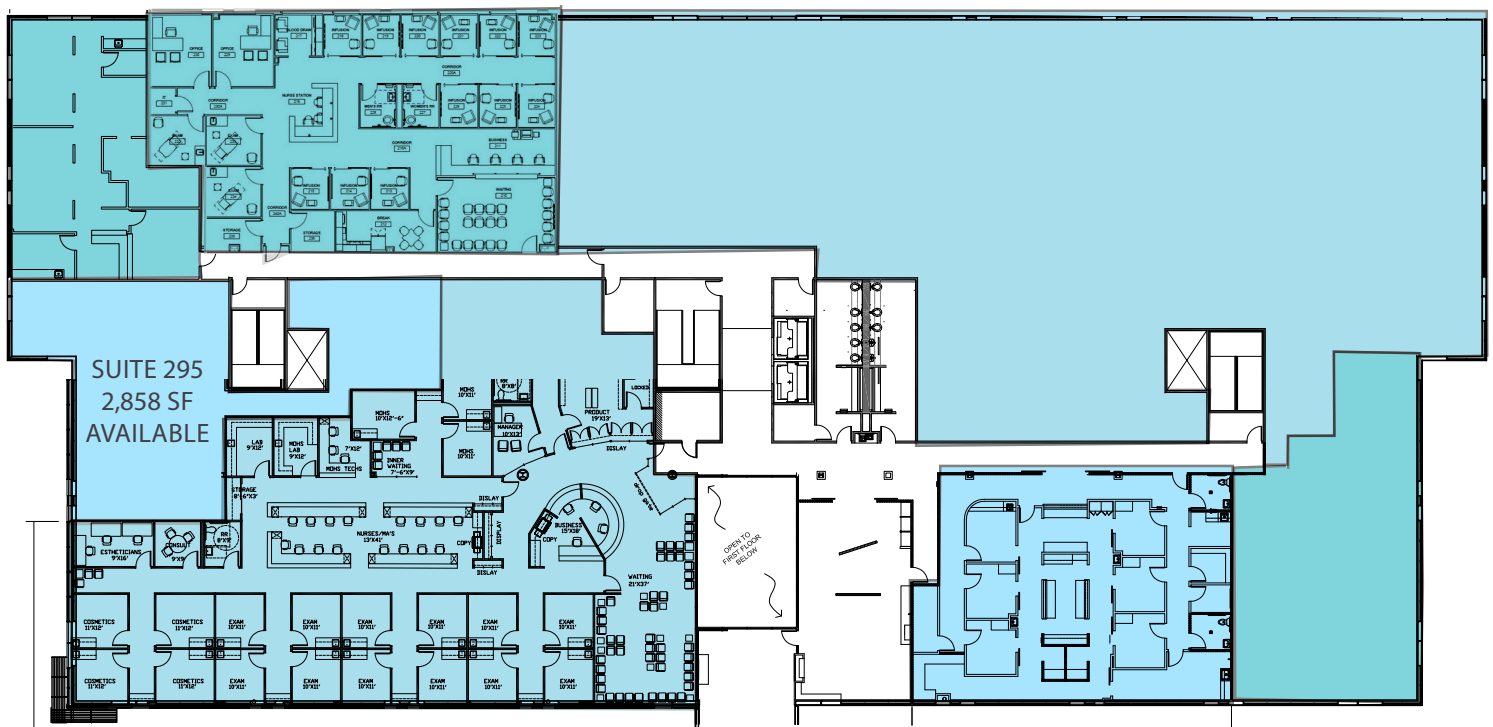


GREENHOUSE MEDICAL PLAZA

2051 Greenhouse Road | Houston, TX 77084

Second Floor

SUITE 220
14,575 SF
AVAILABLE



SUITE 295
2,858 SF
AVAILABLE

SUITE 270
3,315 SF
AVAILABLE

LOUNGE AND
CONFERENCE CENTER



Leasing Information:

Chris Boyd
713.272.1268
Chris.Boyd@transwestern.com

Justin Brasell
713.231.1595
Justin.Brasell@transwestern.com

