

KEY FINANCIAL CENTER

KEY FINANCIAL CENTER OFFICE SPACE
702 W. IDAHO ST. • BOISE

Rafanelli
& Nahas

FOR LEASING
INFORMATION

SCOTT SCHOENHERR



208.947.0407
208.631.7611 (cell)

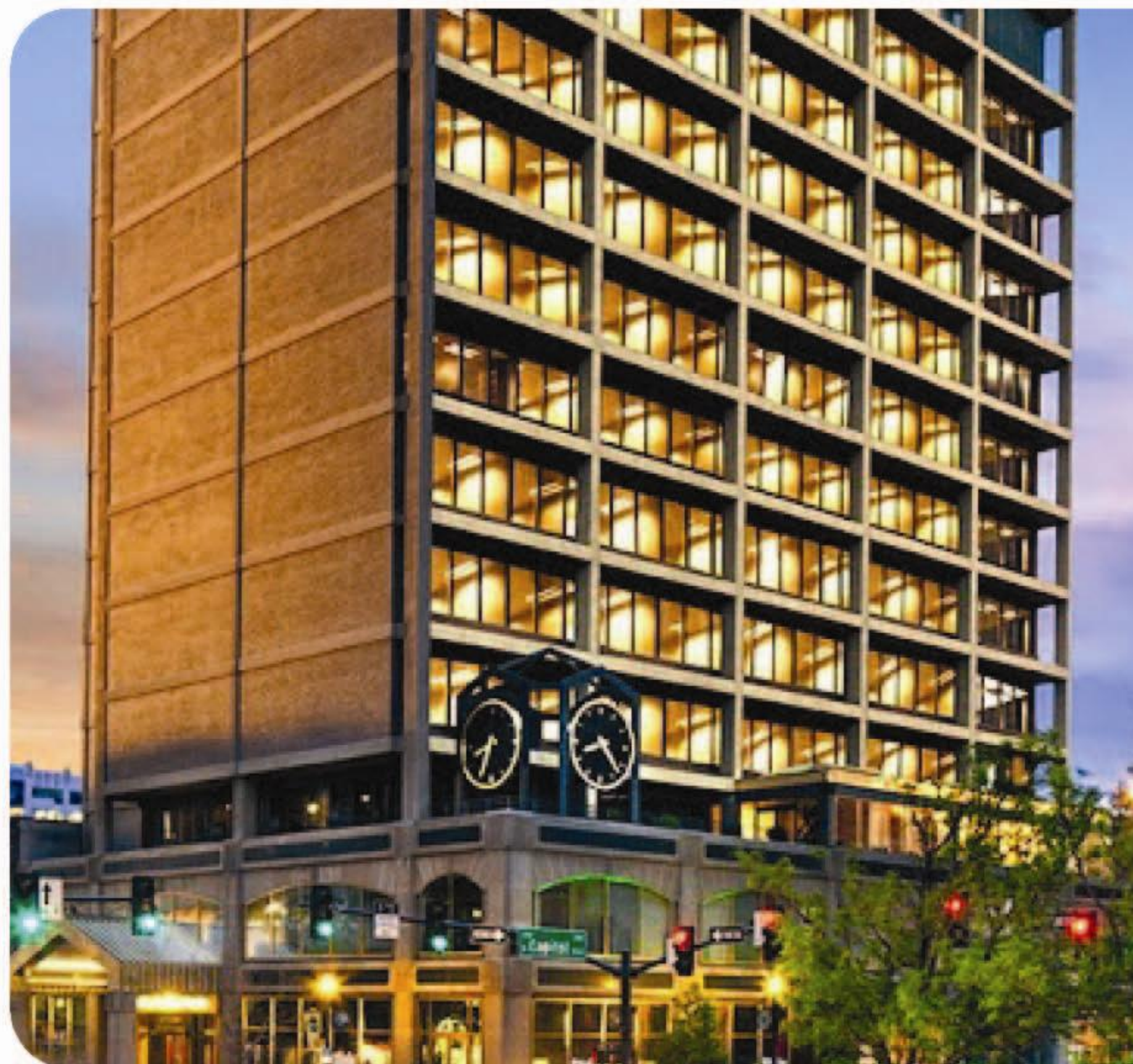


scotts@rafnah.com



702 W. Idaho St.
Suite 825
Boise, ID 83702

FAX: 208.947.0411



AVAILABLE FOR LEASE

OFFICE SPACE FOR LEASE

- 4TH FLOOR
- LEASE RATE: \$19.50 SQ. FT. FLSV

AMENITIES INCLUDE:

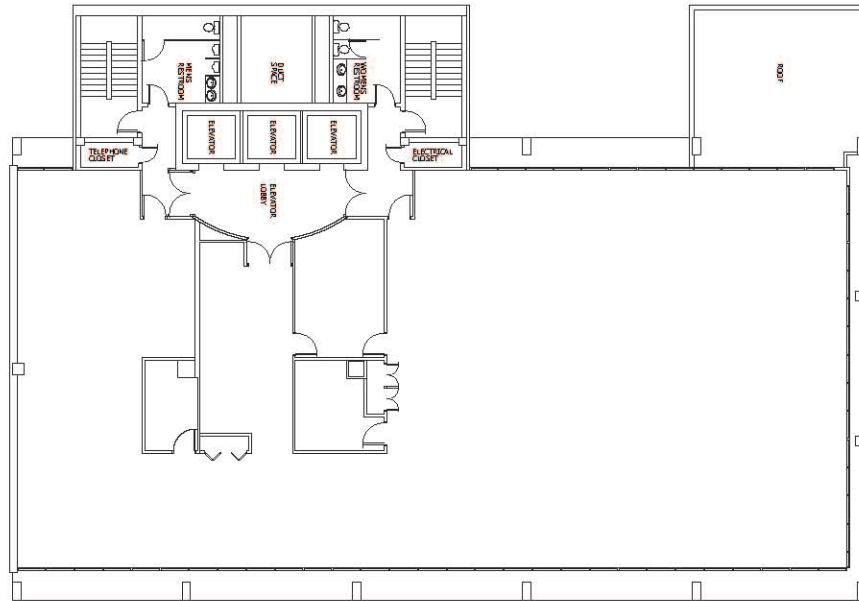
- IN THE HEART OF DOWNTOWN BOISE, AT THE CORNER OF CAPITOL AND IDAHO
- ATTACHED PARKING STRUCTURE
- AMAZING VIEWS OF THE CAPITOL AND FOOTHILLS
- FITNESS CENTER WITH SHOWERS AND LOCKER ROOM
- MANY PLANNED BUILDING UPGRADES

FEATURES

KEY FINANCIAL CENTER

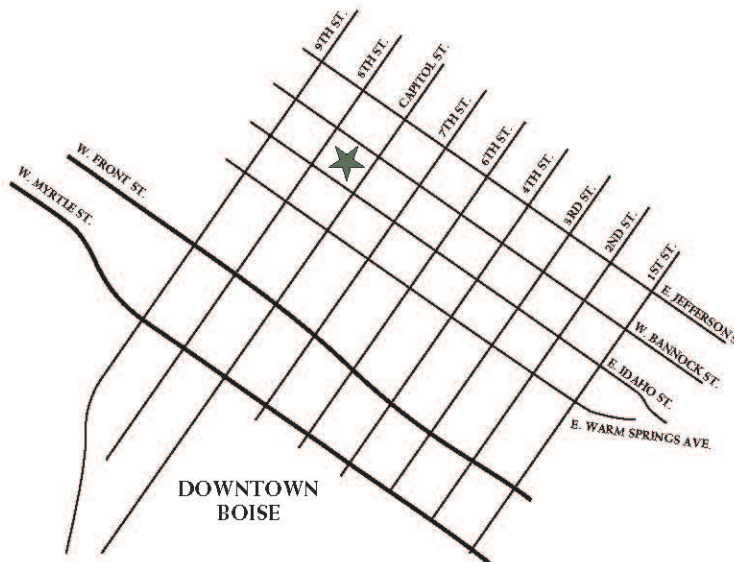
KEY FINANCIAL CENTER OFFICE SPACE
702 W. IDAHO ST. • BOISE

FLOOR PLAN



FOURTH FLOOR
8,020 SQ. FT.

LOCATION MAP



Rafanelli
& Nahas

FOR LEASING
INFORMATION

SCOTT SCHOENHERR

208.947.0407
208.631.7611 (cell)

scotts@rafnah.com

702 W. Idaho St.
Suite 825
Boise, ID 83702

FAX: 208.947.0411