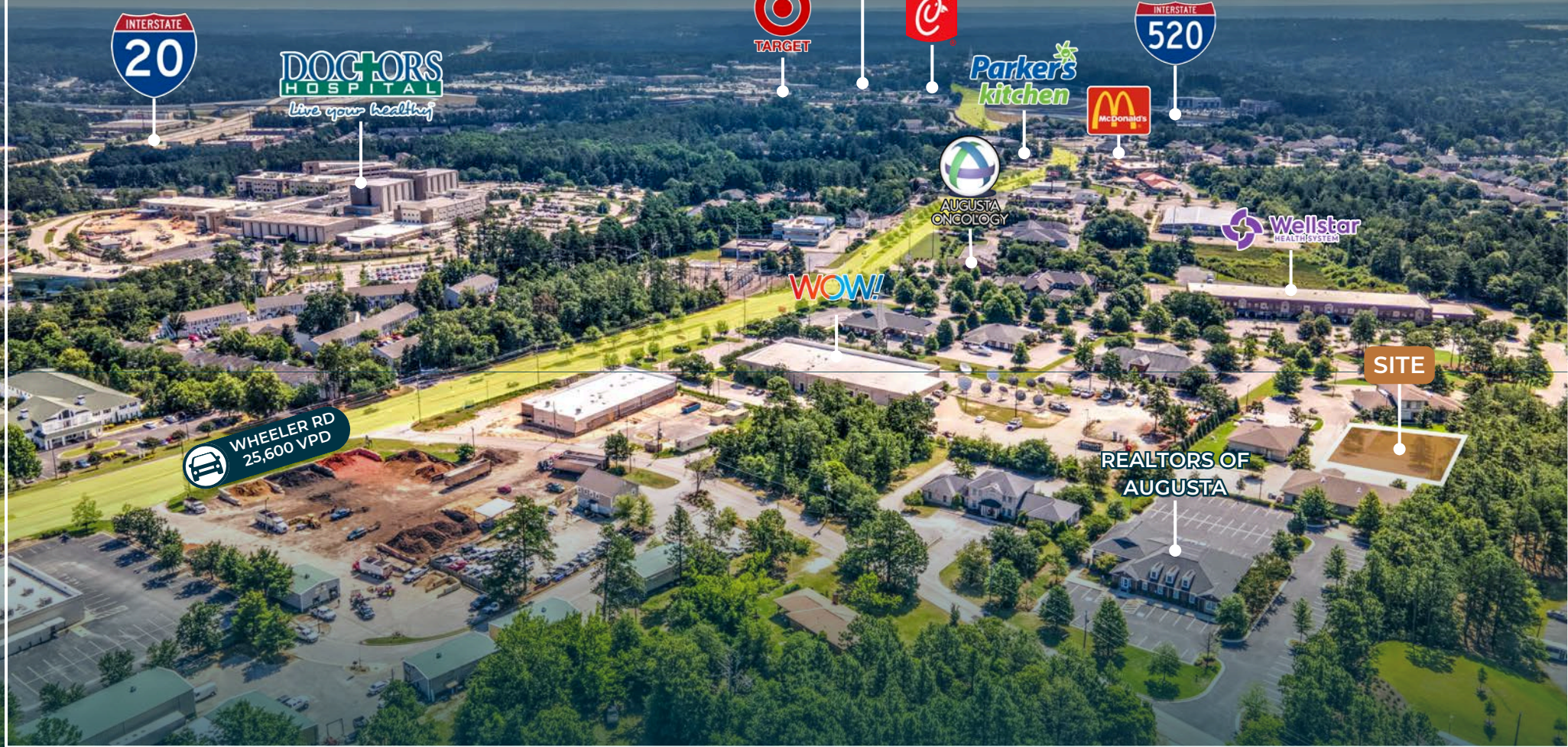




# PAD READY MEDICAL DEVELOPMENT SITE

1221 WEST WHEELER PKWY, AUGUSTA, GA



## PROPERTY DETAILS

Size:	±0.38 Acres	Location:	Near Doctors Hospital
Sale Price:	\$200,000	Wheeler Rd Traffic:	25,600 VPD
Condition:	Pad Ready	Access:	Access to Signal on Wheeler Rd
Zoning:	B2   Commercial	10 Min Drive Time Population:	101,899
Utilities:	On-Site	10 Min Drive Time MHI:	\$56,517

## OFFERING MEMORANDUM

PAD READY MEDICAL OFFICE SITE  
 PROPOSED 4,000 SQFT MEDICAL OFFICE  
 LOCATED IN WEST AUGUSTA MEDICAL DISTRICT



# OFFERING MEMORANDUM TABLE OF CONTENTS

SECTION EXECUTIVE SUMMARY  
01

SECTION SITE MAPS  
02

SECTION PROPERTY PHOTOS  
03

SECTION AREA OVERVIEW  
04

Please submit all offers as a non-binding letter of intent (LOI). Including:

- Price
- DD Time Frame
- Earnest Money
- Special Stipulations

## POINT OF CONTACT

---



JOHN ECKLEY

VICE PRESIDENT, CCIM,MBA  
706-214-2937  
JECKLEY@FINEMGROUP.COM



JONATHAN ACEVES

VICE PRESIDENT, CCIM,MBA  
706-294-1757  
JACEVES@FINEMGROUP.COM



DUSTIN WRIGHT

ASSOCIATE BROKER  
706-830-8266  
DWRIGHT@FINEMGROUP.COM

---

## BROKERAGE SUPPORT STAFF



STEPHEN LONG

SENIOR INVESTMENT ANALYST  
706-513-3840  
SLONG@FINEMGROUP.COM



KEVIN CROW

INVESTMENT ANALYST  
706-840-2198  
KCRAW@FINEMGROUP.COM



JUDY MONIS

TRANSACTION COORDINATOR  
706-214-2937  
JMONIS@FINEMGROUP.COM



# EXECUTIVE SUMMARY




# DEVELOPMENT OPPORTUNITY

## WHY THIS SITE?

 **SITE CONDITION**  
Pad Ready Site

 **UTILITIES**  
On-Site Utilities

 **4,000 SQFT**  
Proposed Building Size

 **INTERSTATE ACCESS**  
<1.0 Miles From I-20 & I-520

 **STRONG MEDICAL AREA**  
Located Near Doctors Hospital

 **FINISHED PARKING LOT**  
Access & Parking Already Installed

 **ZONING**  
Zoned for Commercial Use

## OFFERING DETAILS

Address:	1221 West Wheeler Rd, Augusta, GA
Lot Size:	±0.38 Acres
Sale Price:	\$200,000
Condition:	Pad Ready
Access:	Access to Signal on Wheeler Rd

## OFFERING OVERVIEW

The Finem Group at Meybohm Commercial is pleased to present a pad-ready medical office development opportunity located at 1221 West Wheeler Parkway in Augusta, GA.

This 0.38-acre site is fully improved and ready for vertical construction. The driveway and parking lot are already completed, providing immediate functionality and site access. The parcel is strategically positioned between three active medical office buildings: behind 1219, next to 1223, and in front of 1225 West Wheeler Parkway.

Previous plans and architectural renderings show a 4,000-square-foot medical office building, making the site ideal for an owner-user or medical office developer looking to enter a proven healthcare corridor.

Located within the West Augusta Medical District, the site is less than one mile from Doctors Hospital of Augusta, I-20, and I-520. It is also approximately one mile from Augusta Exchange, a major regional retail center anchored by Target, Regal Cinemas, Chick-fil-A, Chili's, BrandsMart, Crunch Fitness, and more. This infill parcel offers one of the last opportunities to build new medical space in a built-out and in-demand corridor.

# LOCATION OVERVIEW

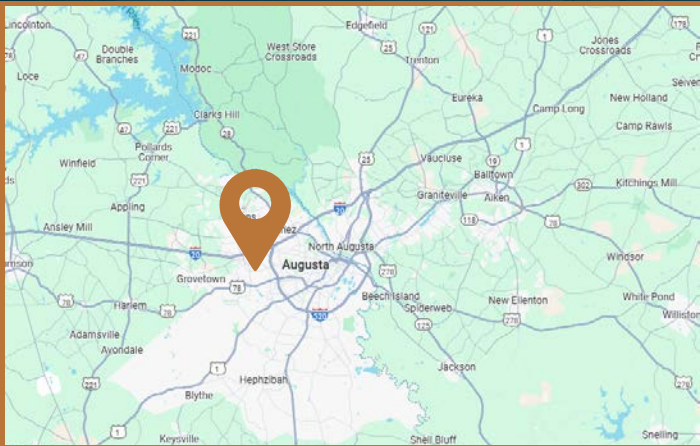
## PREMIUM LOCATION



### TRAVEL DISTANCES

To Areas within the CSRA

Doctors Hospital	1.0 Mile
I-520	1.0 Mile
I-20	1.0 Mile
Grovetown WellStar Hospital	7.8 Miles
Downtown Medical District	7.9 Miles
Downtown Augusta, GA	11.0 Miles
Piedmont Hospital (Thomson, GA)	24.9 Miles
Aiken Regional Hospital	26.0 Miles



#### Proximal Medical Entities:

- |                                       |                                       |
|---------------------------------------|---------------------------------------|
| Doctors Hospital                      | Dr. Miriam Atkins                     |
| Au Health- West Wheeler Internal Med. | Augusta Hearing and Balance           |
| University Extended Care              | Aiken Augusta Oral and Facial Surgery |
| Augusta Pediatrics                    | Dermatology and Skin Cancer Center    |
| Medical Associates Plus               | Center for Primary Care               |
| Eye Physicians and Surgeons of Aug.   | Southeast Retina Center               |
| West Augusta Obstetrics and Gyn.      | Clinical Care ID Consultants          |
| Urgent MD                             | Augusta Endodontic Center             |

1221 West Wheeler Parkway is located within Augusta's West Wheeler medical corridor, a dense cluster of medical office buildings just west of Doctors Hospital of Augusta, one of the area's primary acute care centers. The site is easily accessible from both I-20 and I-520, providing strong regional connectivity across the greater Augusta area and nearby suburbs such as Evans and North Augusta.

The property is one mile from the Augusta Exchange retail center, which includes major national retailers and restaurants such as Target, Chick-fil-A, Regal Cinemas, Chili's, BrandsMart, Crunch Fitness, and more. The retail presence, combined with surrounding medical office occupancy, provides strong daily traffic and long-term support for medical use.



DOCTORS  
HOSPITAL  
*live your healthy*



Parker's  
kitchen



AUGUSTA  
ONCOLOGY



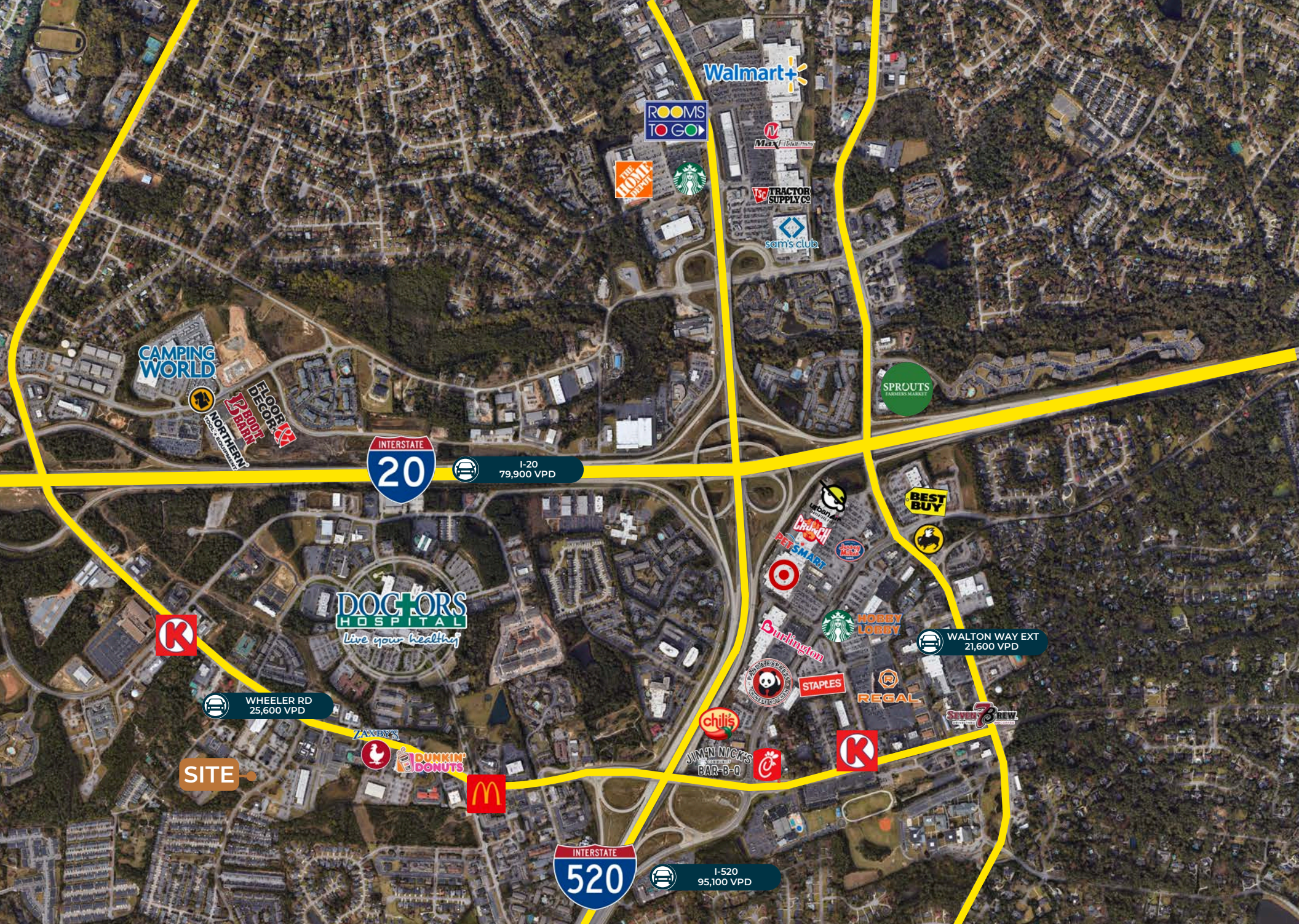
WOW!

WHEELER RD  
25,600 VPD

SITE

REALTORS OF  
AUGUSTA





CAMPING WORLD

FLOOR DECOR  
PAINT  
NORTHERN

INTERSTATE  
20

I-20  
79,900 VPD

Walmart+

ROOMS  
TO GO

Max Business

THE HOME DEPOT

Starbucks

TRACTOR SUPPLY CO

sam's club

SPROUTS  
FARMERS MARKET

K

DOCTORS  
HOSPITAL  
*live your health*

WHEELER RD  
25,600 VPD

SITE

ZAVY'S

DUNKIN'  
DONUTS

McDonald's

chili's

JIMMY NICKS  
BAR-B-Q

Burlington

STAPLES

REGAL

K

BEST BUY

Urban Air

CRACK

PETSMART

HOBBY LOBBY

WALTON WAY EXT  
21,600 VPD

INTERSTATE  
520

I-520  
95,100 VPD



# PAD READY MEDICAL OFFICE SITE

## MEDICAL OFFICE RENDERING

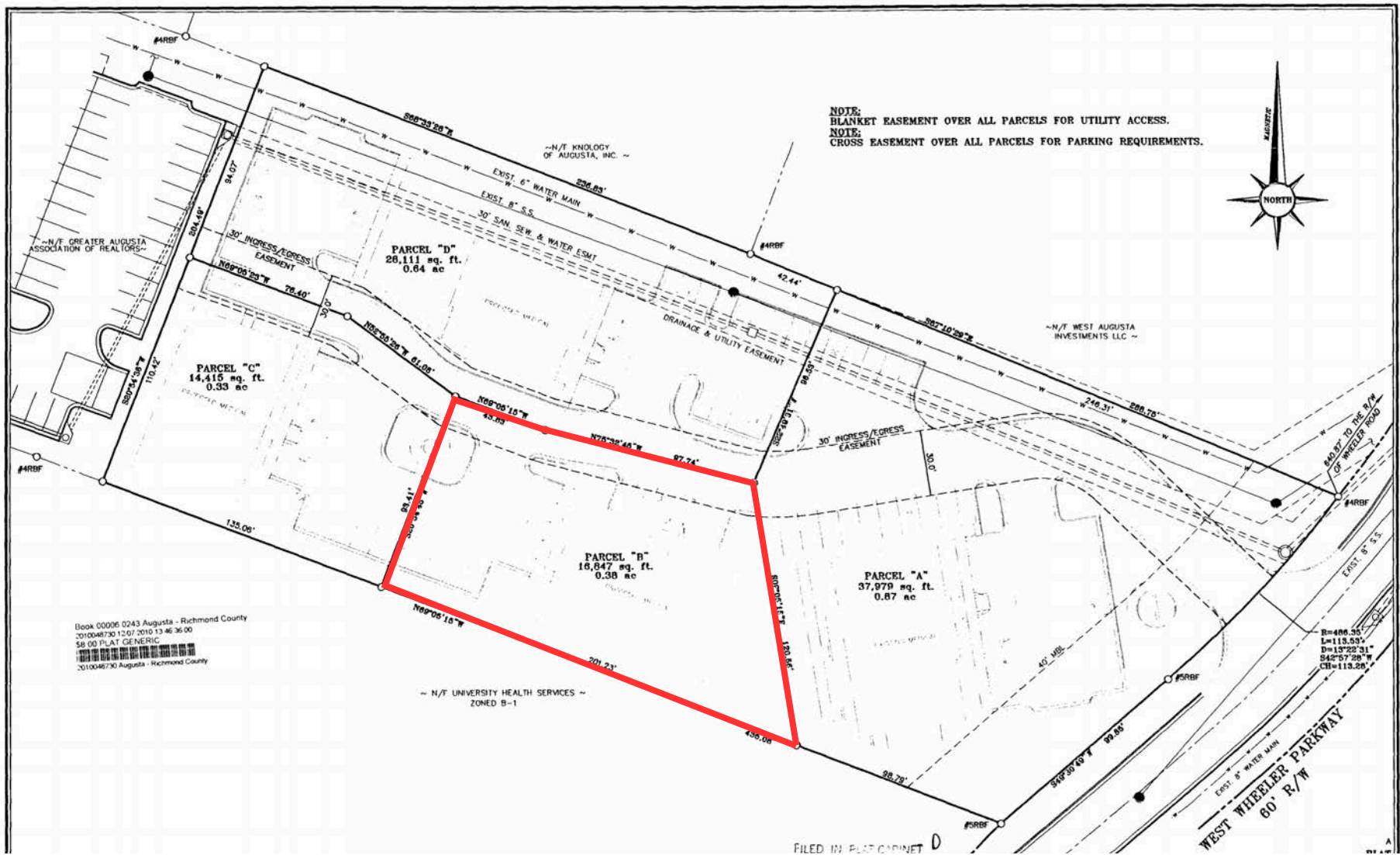




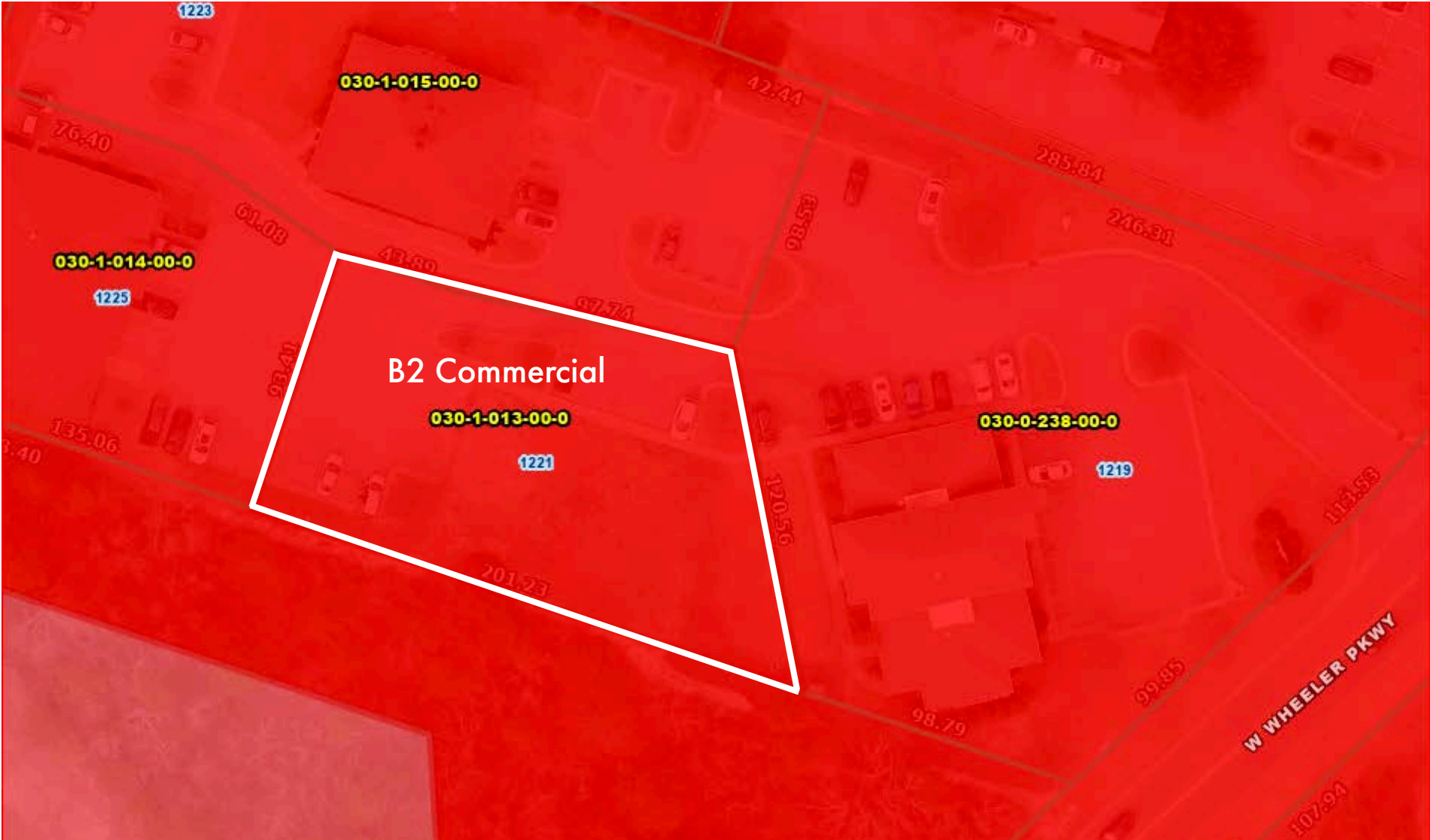
# SITE MAPS



# PAD READY MEDICAL OFFICE SITE PLAT MAP



# PAD READY MEDICAL OFFICE SITE ZONING MAP





**PROPERTY  
PHOTOS**











# AREA OVERVIEW



# WHY? GEORGIA

## KEY DRIVERS

By 2050 Georgia's Population is projected to increase by nearly 2.5 Million people and Georgia's workforce is expected to grow by 3.1 million jobs. This incredible growth puts increased demands on Georgia's freight and logistics infrastructure which transports personal goods for families, raw materials to Georgia businesses, and moves products across the state and nation



Annual Georgia Freight Tonnage will increase 91% by 2050



Congestion costs for Georgia based traffic are projected to increase more than 100% by 2050



Manufacturing is expected to grow by 77% by 2050



Agriculture is expected to grow by 43% by 2050



Distribution freight flows are expected to more than triple from 2019 to 2050

## TOP 10 STATES

1. Georgia
2. Indiana
3. Texas
4. North Carolina
5. South Carolina
6. Ohio
7. Michigan
8. Kentucky
9. Illinois
10. Louisiana

Per Site Selection

Site Selection Magazine's most annual Site Selectors Survey is out as of this past January, and the prospects for GA and the greater Southeast continue to shine!

Key stats for GA as follows:

- Top State Business Climate: GA#3
- Best Manufacturing Workforce States: GA#4
- Best States for Manufacturing: GA#3

Other items of interest:

- Atlanta ranked as #2 city for HQ Projects behind Dallas
- U.S. #1 for International Investment
- Most important factors for location (in order): Tax Policy, Workforce, Incentives and Quality of Life



## ECONOMIC OVERVIEW

Georgia's Population is robust, making it the 8th most populous state with the majority of Georgians in prime working ages, 25-44 Years Old.

**By 2050, the State is projected to Grow to 13,390,283, an increase of nearly 2.5 Million.**

The state has experienced strong economic growth evidenced by being ranked 11th for GDP growth and Georgia continues to be ranked 8th nationally for its tax burden keeping the state competitive.



## ECONOMIC COMPETITIVENESS

Georgia ranks highly on various metrics related to the creation of new businesses in the state, which is a strong indicator of a dynamic economy.

**The state ranks 6th nationally for net new businesses created and 3rd in the percentage of adults becoming entrepreneurs each month.**

Georgia ranks 8th for change in capital invested over the last 5 years indication the attraction of investment and innovation.



## FUTURE OF TALENT

The state ranks 7th in terms of job growth of non-agriculture employment, ahead of most southern states.

**Georgia continues to be a leader in job growth.**

Georgia ranks 14th in the growth of high-tech employment and ranks 11th for the number of STEM doctorates. These are important indicators of a strong talent base



## INFRASTRUCTURE OF THE FUTURE

The State's Logistics infrastructure continues to be a significant strength. Monthly TEU throughput in the port of Savannah has increased by 90% over the last decade.

**Georgia ranks 4th in terms of growth in jobs in the warehouse sector over the last 5 years.**

**11M**  
Total State  
Population

**61%**  
Labor Force  
Participation

**268K**  
Jobs Created  
Last 5 Years

**134B**  
Invested in GA  
in Last 5 Years

**13M**  
2050 Projected  
State Pop.

**90%**  
Growth in Trade at  
Port of Savannah  
Over the Last Decade

# WHY? AUGUSTA

## OVERVIEW

Augusta is in a perfect phase for business. Right-sized, ideally strategically located, with a backbone of education, medical, and military pumping out a solid labor force, the city has become a beacon for companies to set up shop. **Infrastructure, labor force, cost of living, location, education, industry- they are all leading companies large and small to Augusta.**



## HOME OF THE AUGUSTA NATIONAL

Year after year during the first full week of April, golf fans descend on Augusta by the thousands. The annual event marks a boom for the local economy with over 200,000 average attendees. Augusta is known as the golf capital of the universe for good reason, and the love of golf extends well beyond the confines of Augusta National. It attracts politicians, athletes, musicians, Corporate CEOs, and many more which brings some of the world's most powerful people all in the same week to Augusta, GA.



# MASTERS



## A WELL CONNECTED CITY

Few places are as ideally located as Augusta. The city sits on I-20 between Atlanta (eastbound) and Columbia (westbound), with every major artery of Southeastern Interstate within easy reach, especially I-95 and I-77.

**Augusta is less than 150 miles from the Ports of Savannah and Charleston.**

Augusta's regional airport has direct flights to Atlanta, Charlotte, Washington DC, and Dallas.



## CYBER CITY

The Augusta Region has long been a hotbed for the tech- and cyber-related companies such as Unisys, ADP, and Raytheon. Now, Augusta is home to the US Cyber Command at Fort Gordon and the newly completed Georgia Cyber Center, a \$100 million investment and the largest government cybersecurity facility in the United States.

**U.S. Army Cyber Command (ARCYBER) is the Army headquarters beneath United States Cyber Command.**



## HEALTHCARE

Augusta University is Georgia's health sciences university, offering resources and services for those throughout the state and beyond. It features the Medical College of Georgia, the Dental College of Georgia, and a highly sought-after nursing program.

**There are 12 total Hospitals in the area with a brand new one being constructed.**

Doctor's Hospital in Augusta is the largest burn center in the United States and the third largest in the world.



## LOW HOUSING COSTS

One of the biggest jewels in Augusta's crown is our low housing cost. Here, a broad variety of options are available, encompassing everything from new TND neighborhoods to established communities of antebellum and craftsman style homes.

**Our market is more than 50% less than the national average, complimenting the low cost of living and doing business in Augusta.**

# 2<sup>nd</sup>

Most Populated MSA in GA

# 611K

CSRA Population

# 270K

CSRA Labor Force

# 5.7%

Percentage Unemployed

# 13K

Projected Job Growth in Next 5 Years

# 27K

Projected Population Growth in Next the 5 Years

# PAD READY MEDICAL OFFICE SITE

## A MEDICAL HUB

The Central Savannah River Area (CSRA), anchored by Augusta, Georgia, serves as a leading regional center for healthcare, medical education, and biomedical research in the southeastern United States. The region is home to a robust network of hospitals, specialty care centers, and academic institutions that collectively provide critical services to a multi-county area spanning both Georgia and South Carolina.



### MAJOR HEALTH CARE INSTITUTIONS

**Augusta University Health:** A comprehensive academic health center affiliated with Augusta University, which houses the Medical College of Georgia (MCG), the state's only public medical school and one of the oldest and largest in the U.S. MCG trains physicians, nurses, and allied health professionals, and supports a large teaching hospital with over 600 beds.

**Wellstar MCG Health Medical Center:** Formerly Augusta University Medical Center, this flagship hospital serves as a Level I trauma center and offers advanced services in cancer treatment, neurology, cardiology, and transplant care.

**Children's Hospital of Georgia:** A 154-bed facility affiliated with MCG, providing the region's most comprehensive pediatric care.

**Piedmont Hospital (formerly University Hospital):** A key non-profit hospital serving the area since 1818. With multiple campuses, it delivers general acute care, oncology, and cardiac services.

**Charlie Norwood VA Medical Center:** A two-campus Veterans Affairs hospital serving over 50,000 veterans annually across Georgia and South Carolina.

**Doctors Hospital of Augusta (HCA Healthcare):** A for-profit acute care facility with 350+ beds, home to the Joseph M. Still Burn Center—one of the largest in the U.S.



### MEDICAL EDUCATION AND RESEARCH

**Medical College of Georgia (MCG) at Augusta University:** Offers MD, DMD, nursing, allied health, and biomedical PhDs. MCG supports clinical training across more than 200 sites statewide, reinforcing its role as a pipeline for Georgia's healthcare workforce.

**Dental College of Georgia:** The only dental school in Georgia, focusing on clinical excellence and research in oral health.

**College of Nursing and College of Allied Health Sciences:** Provide BSN, MSN, DNP, and various allied health programs, supplying essential talent to regional hospitals.



### ECONOMIC AND WORKFORCE IMPACT

The healthcare and social assistance sector represents one of the CSRA's largest employment categories, driven by over 25,000 healthcare professionals concentrated in the Augusta Medical District.

Augusta University alone employs over 7,000 people, with medical and allied health programs contributing to both regional workforce development and national research efforts.

Collectively, the medical sector contributes an estimated \$1.8+ billion annually to the local economy, supported by an influx of patients from surrounding rural counties and neighboring states.

**For inquiries,  
contact us.**



[www.finemgroup.com](http://www.finemgroup.com)  
[jeckley@finemgroup.com](mailto:jeckley@finemgroup.com)  
706.214.2937



**JOHN ECKLEY**  
VICE PRESIDENT  
[JECKLEY@FINEMGROUP.COM](mailto:JECKLEY@FINEMGROUP.COM)  
706.214.2937