

120 S. FARMER STREET
OTSEGO, MICHIGAN

INDUSTRIAL FOR SALE OR LEASE
41,186 Square Feet Available



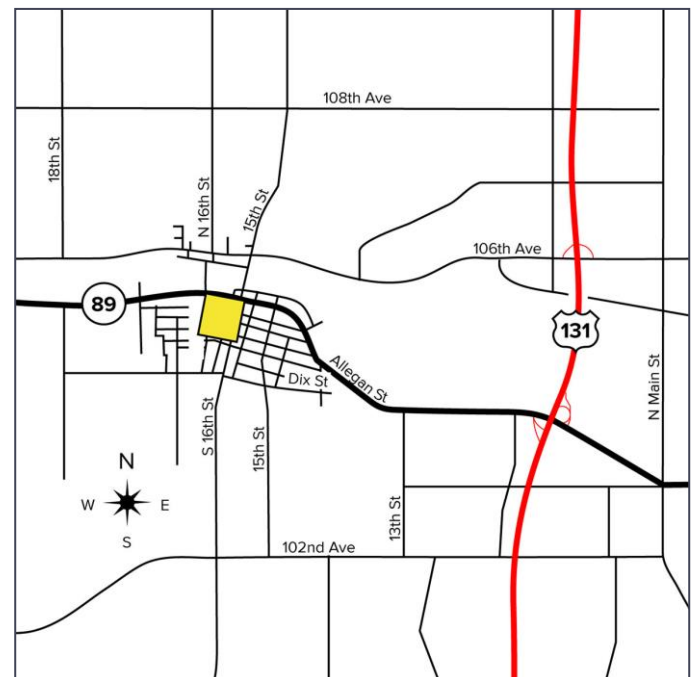
**SIGNATURE
ASSOCIATES**
KNOW SIGNATURE | KNOW RESULTS

POSSIBLE WAREHOUSE / DISTRIBUTION



PROPERTY FEATURES

- 41,186 square feet available
- Zoned CBD – can be rezoned for industrial
- Great warehouse / distribution building
- Built in 1993
- (2) truck docks with levelers
- (2) 8x10 and (1) 8x8 grade level doors
- 19' clear height
- Heavy power
- 154 parking spaces
- Sale Price: \$2,050,000 (\$49.77/sf)
- Lease Rate: \$5.00/sf NNN



For more information, please contact:

JOE RIZQALLAH
(616) 822 6310
jrizqallah@signatureassociates.com

CHRISTOPHER M. D'ANGELO
(248) 930 2587
cdangelo@signatureassociates.com

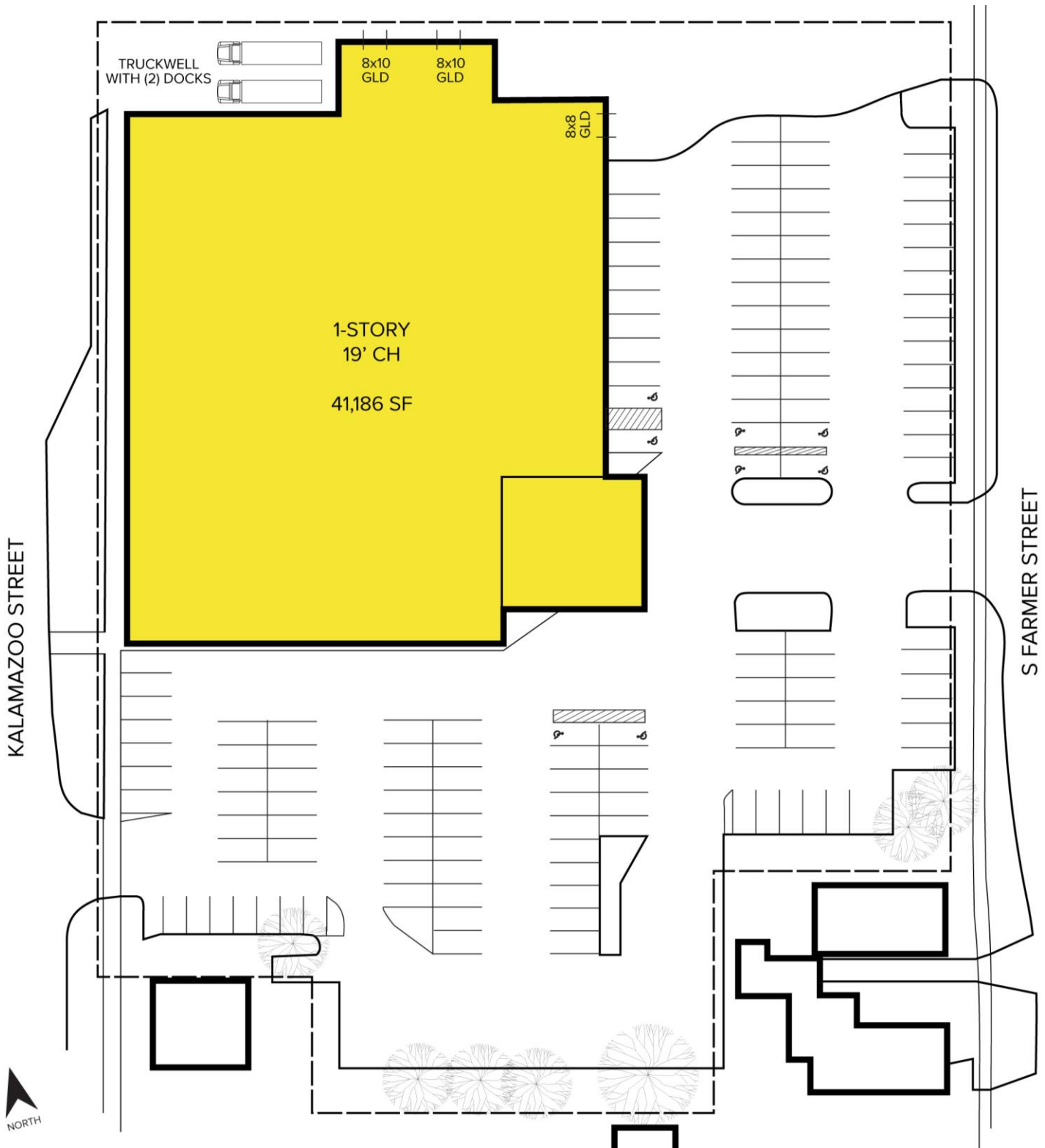
SIGNATURE ASSOCIATES
1188 East Paris Ave SE, Suite 220
Grand Rapids, MI 49546
www.signatureassociates.com

120 S. Farmer Street – Otsego, Michigan

Industrial Sale or Lease

41,186
Square Feet
AVAILABLE

Site Plan



For more information, please contact:

JOE RIZQALLAH

(616) 822 6310

jrizzqallah@signatureassociates.com

CHRISTOPHER M. D'ANGELO

(248) 930 2587

cdangelo@signatureassociates.com

SIGNATURE ASSOCIATES

1188 East Paris Ave SE, Suite 220

Grand Rapids, MI 49546

www.signatureassociates.com

120 S. Farmer Street – Otsego, Michigan

Industrial for Sale or Lease

41,186
Square Feet
AVAILABLE

Photos



Truck Dock



Heavy Power

For more information, please contact:

JOE RIZQALLAH

(616) 822 6310

jrizqallah@signatureassociates.com

CHRISTOPHER M. D'ANGELO

(248) 930 2587

cdangelo@signatureassociates.com

SIGNATURE ASSOCIATES

1188 East Paris Ave SE, Suite 220

Grand Rapids, MI 49546

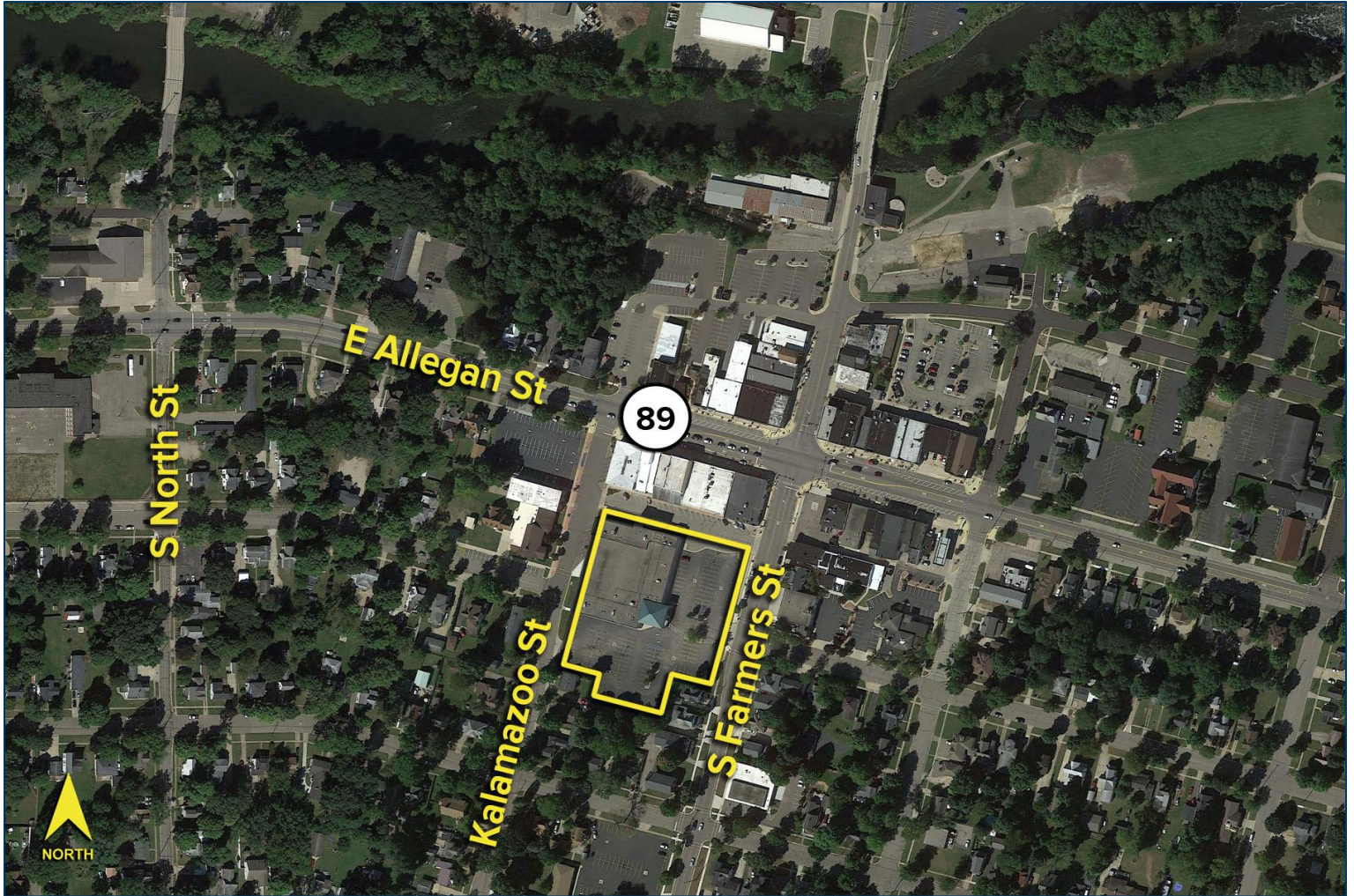
www.signatureassociates.com

120 S. Farmer Street – Otsego, Michigan

Industrial for Sale or Lease

41,186
Square Feet
AVAILABLE

Aerial



For more information, please contact:

JOE RIZQALLAH

(616) 822 6310

jrizqallah@signatureassociates.com

CHRISTOPHER M. D'ANGELO

(248) 930 2587

cdangelo@signatureassociates.com

SIGNATURE ASSOCIATES

1188 East Paris Ave SE, Suite 220

Grand Rapids, MI 49546

www.signatureassociates.com